

**L A U R A   S T E P H A N I E**



**Inspired by the  
boundlessness of nature  
in its purest elements.**



Auroral and romantic with an elegant sway in their step, and worthy of a celestial deity.

These boulder opal and diamond earrings, with glints of moonlit blues, conjure lightness and purity—a statement that speaks softly and surely.

## **Audrina**

---

ONE OF A KIND. 14K WHITE GOLD. BOULDER OPALS FROM AUSTRALIA (23.45 CARATS)  
NATURAL WHITE DIAMONDS (1.71 CARATS). 4.0 CM LONG X 2.0 CM WIDE. LEVERBACK CLOSURE.

A palette of boundless waves, meeting an infinite sky.

Diamonds delicately enclose an iridescent black opal in this alluring design, inspired by the coast of Australia.

## Marissa

---

ONE OF A KIND. 14K WHITE GOLD. BLACK OPAL FROM LIGHTNING RIDGE, AUSTRALIA (4.62 CARATS)  
NATURAL WHITE DIAMONDS (0.46 CARATS). 2.1 CM LONG X 1.7 CM WIDE.







Brilliant to lay eyes on, like the scintillating sun high above the Arizona desert, where the physical and spiritual intertwine.

Sleeping Beauty Turquoise teardrops fall from the rose-cut diamonds delicately hand-set in shimmering open latticework.

## Sierra

---

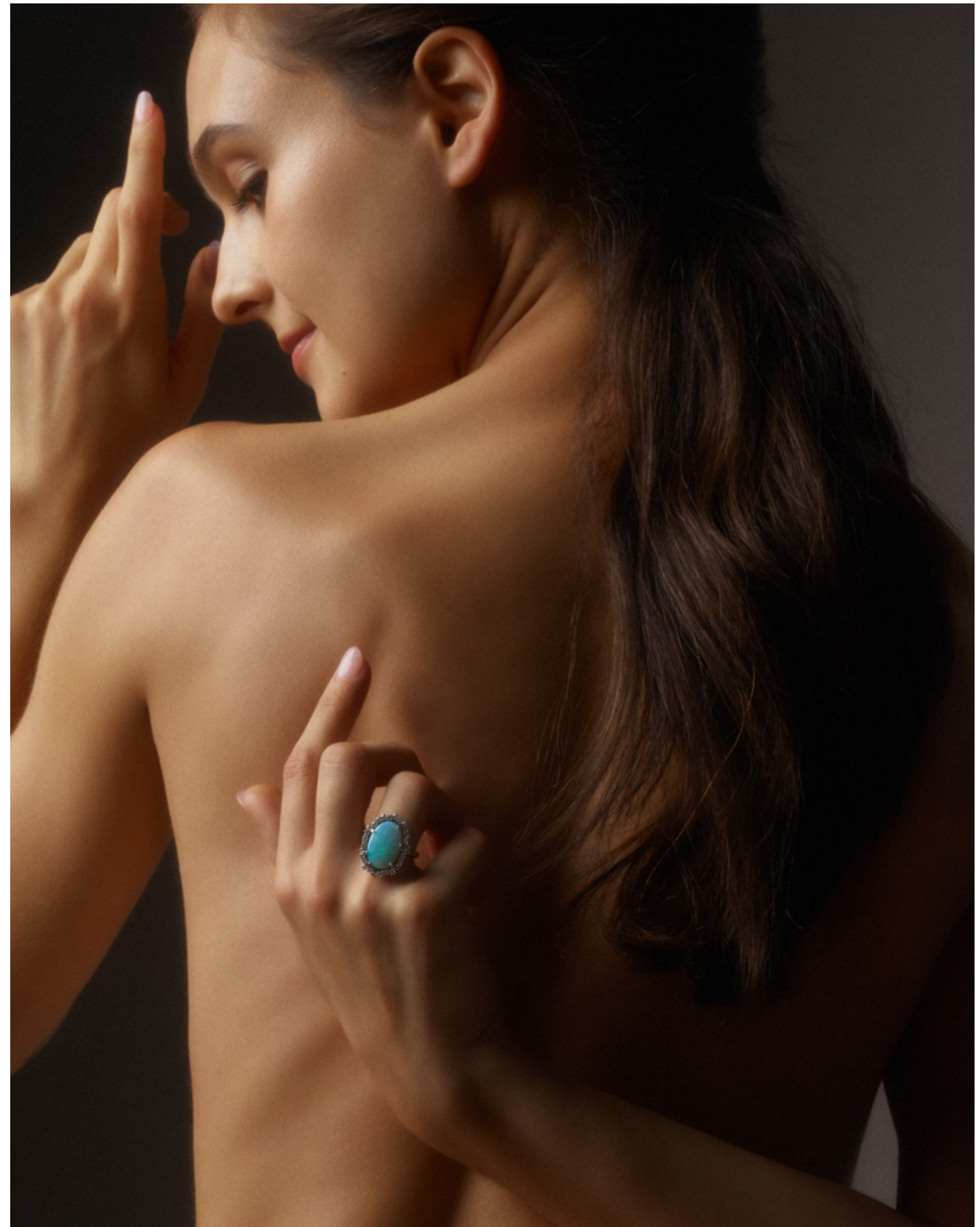
ONE OF A KIND. 14K WHITE GOLD. SLEEPING BEAUTY TURQUOISE FROM ARIZONA (17.09 CARATS) ROSE-CUT NATURAL WHITE DIAMONDS (3.52 CARATS). BRILLIANT-CUT NATURAL WHITE DIAMONDS (0.16 CARATS). 6.0 CM LONG X 2.5 CM WIDE. LEVERBACK CLOSURE.

This opal and diamond design calls to mind the rare 'green flash' sunsets of the Australian coast: the moment when the barest edge of the setting sun refracts into the most sublime shades of blue and green. Pure magic, made by light.

## Marissa

---

ONE OF A KIND. 14K WHITE GOLD. LIGHT OPAL FROM LIGHTNING RIDGE, AUSTRALIA (6.05 CARATS).  
NATURAL WHITE DIAMONDS (0.46 CARATS). 2.1 CM LONG X 1.6 CM WIDE.







Shining diamonds and rich turquoise—evoking the elements of air, water and earth—seem to dance with even the most subtle of movements on these earrings, inspired by the kachina spirits of the Southwest.

## **Kachina**

---

LIMITED EDITION. 14K WHITE GOLD. DYER BLUE TURQUOISE FROM NEVADA (6.70 CARATS). NATURAL WHITE DIAMONDS (1.96 CARATS). 5.0 CM LONG X 2.5 CM WIDE. HOOK CLOSURE.

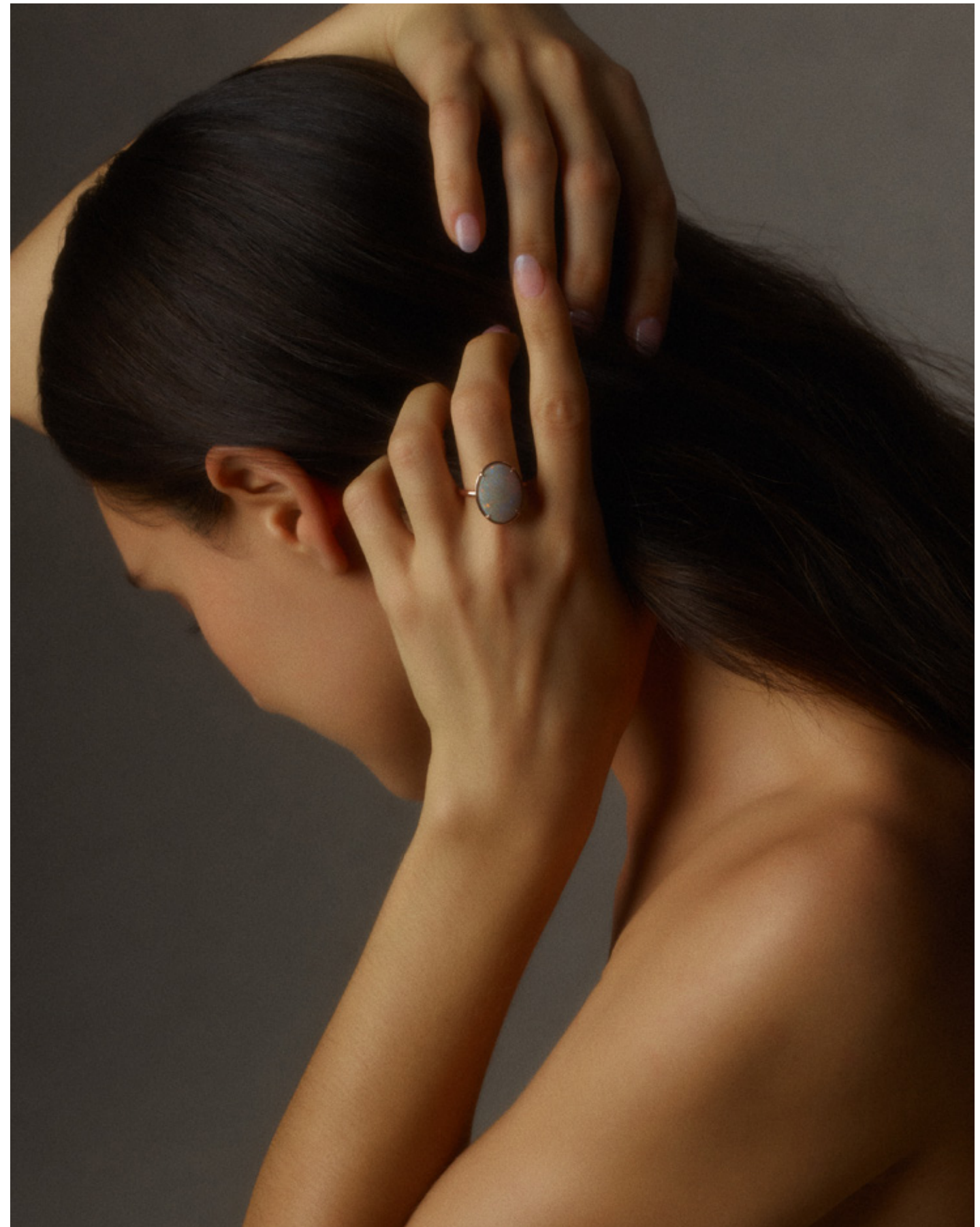
A celestial beauty, seemingly plucked from the hazy,  
golden skies of a warm spell in late autumn.

Pink and red undertones playfully flicker and fade on  
this mercurial stone, set in luminous 14k rose gold.

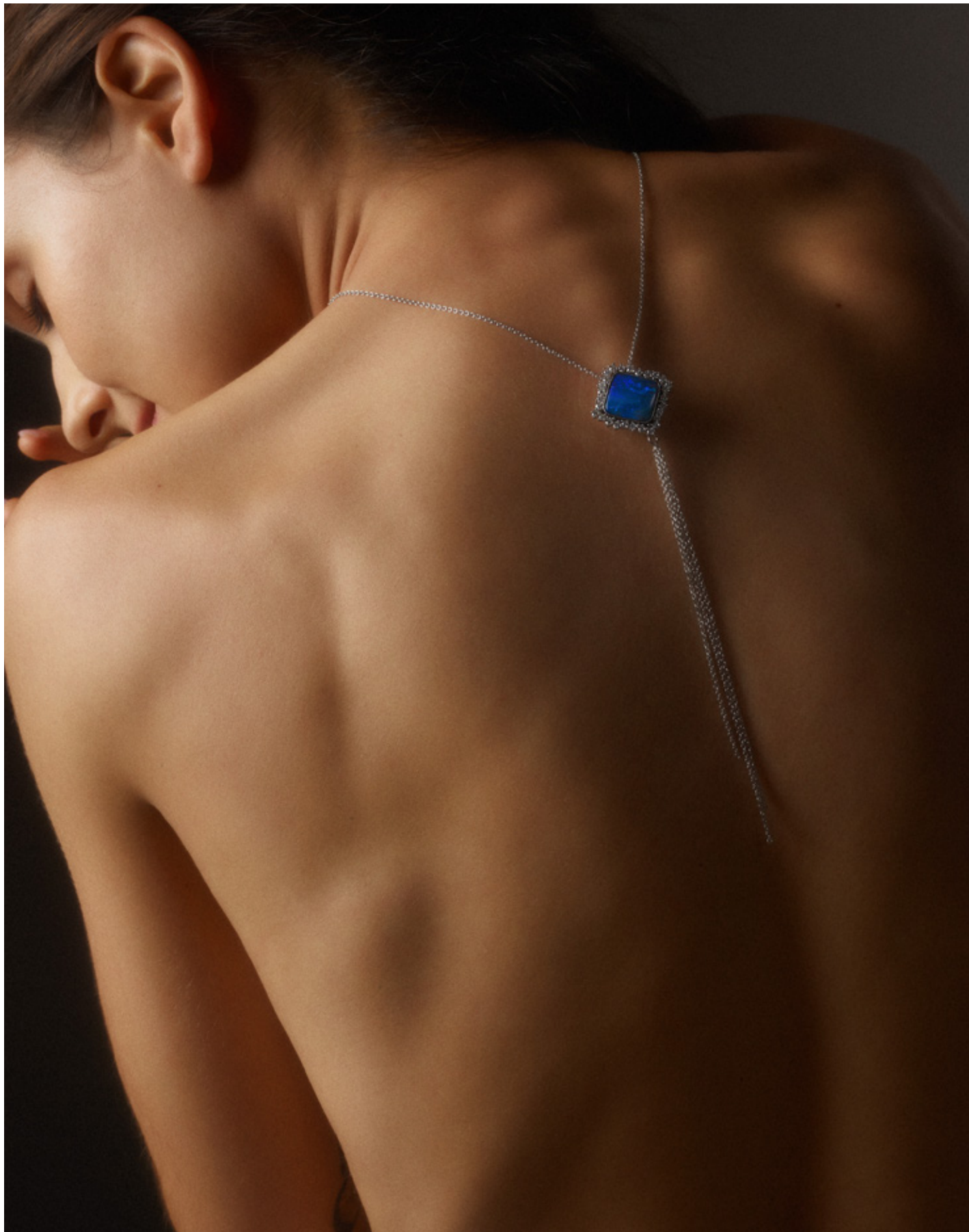
## Autumn

---

ONE OF A KIND. 14K ROSE GOLD. LIGHT OPAL FROM LIGHTNING RIDGE,  
AUSTRALIA (5.62 CARATS). 1.9 CM LONG X 1.5 CM WIDE.







Pure poetry in motion: Delicate rivulets of white gold cascade from an azurean dark crystal opal pendant, ringed in diamonds.

A design that calls to mind the luminous waters lapping on the Majorcan coast, and sunlight dancing across the sea.

## Mira

---

ONE OF A KIND. 14K WHITE GOLD. DARK CRYSTAL OPAL FROM LIGHTNING RIDGE, AUSTRALIA (6.29 CARATS). NATURAL WHITE DIAMONDS (0.98 CARATS). 2.6 CM LONG X 2.6 CM WIDE PENDANT. 1.5 MM CABLE CHAIN ADJUSTABLE AT 16, 17, AND 18 INCHES. 1.5 MM REMOVABLE CABLE CHAIN DROP FRINGE AT LONGEST LENGTH 5 INCHES. LOBSTER CLASP CLOSURE.

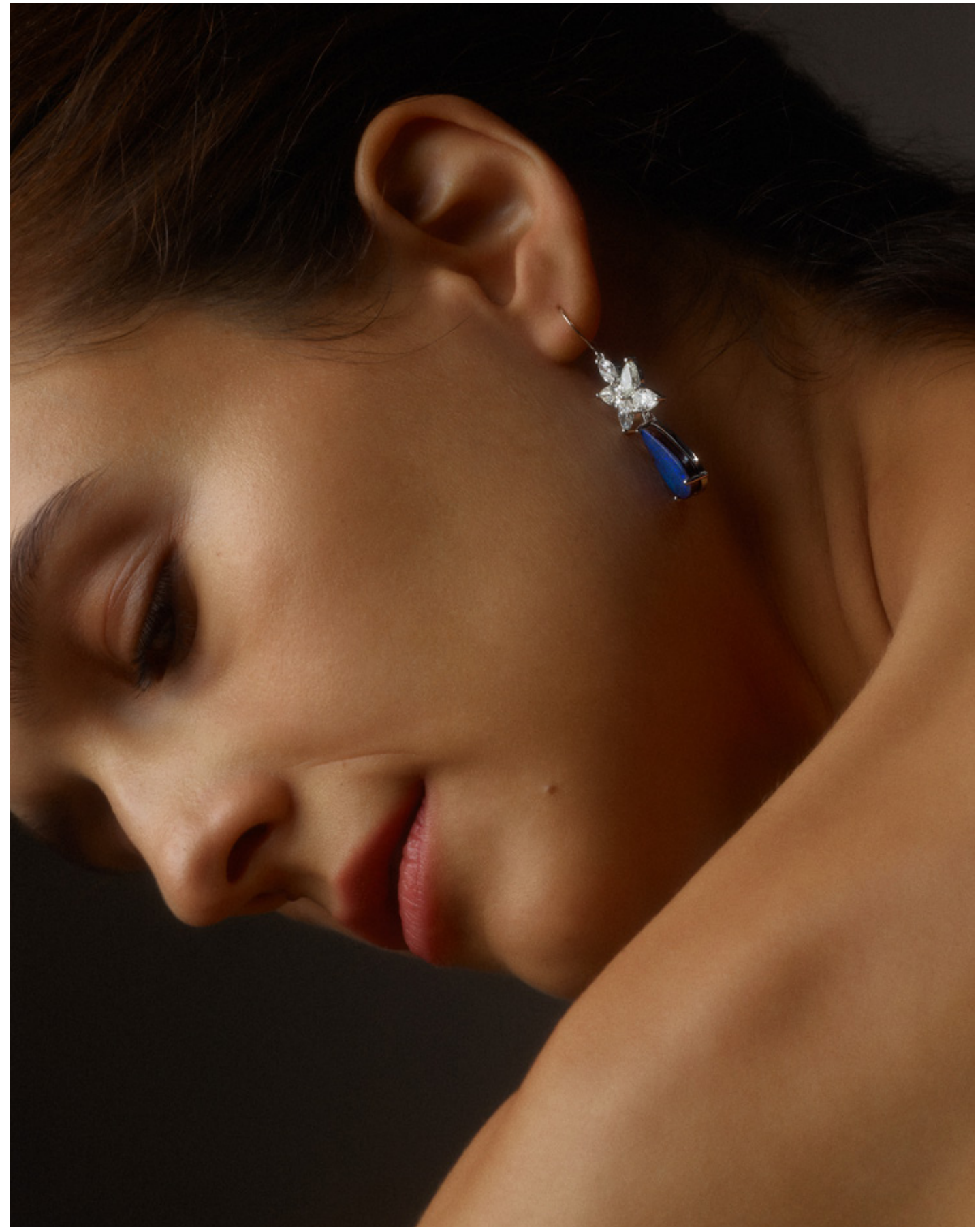
Ambrosial, with an air of mystery—like a  
midnight stroll through a secret garden.

Blossoms of marquise and pear-cut diamonds  
give way to boulder opal droplets in the most  
surreal shade of violet blue.

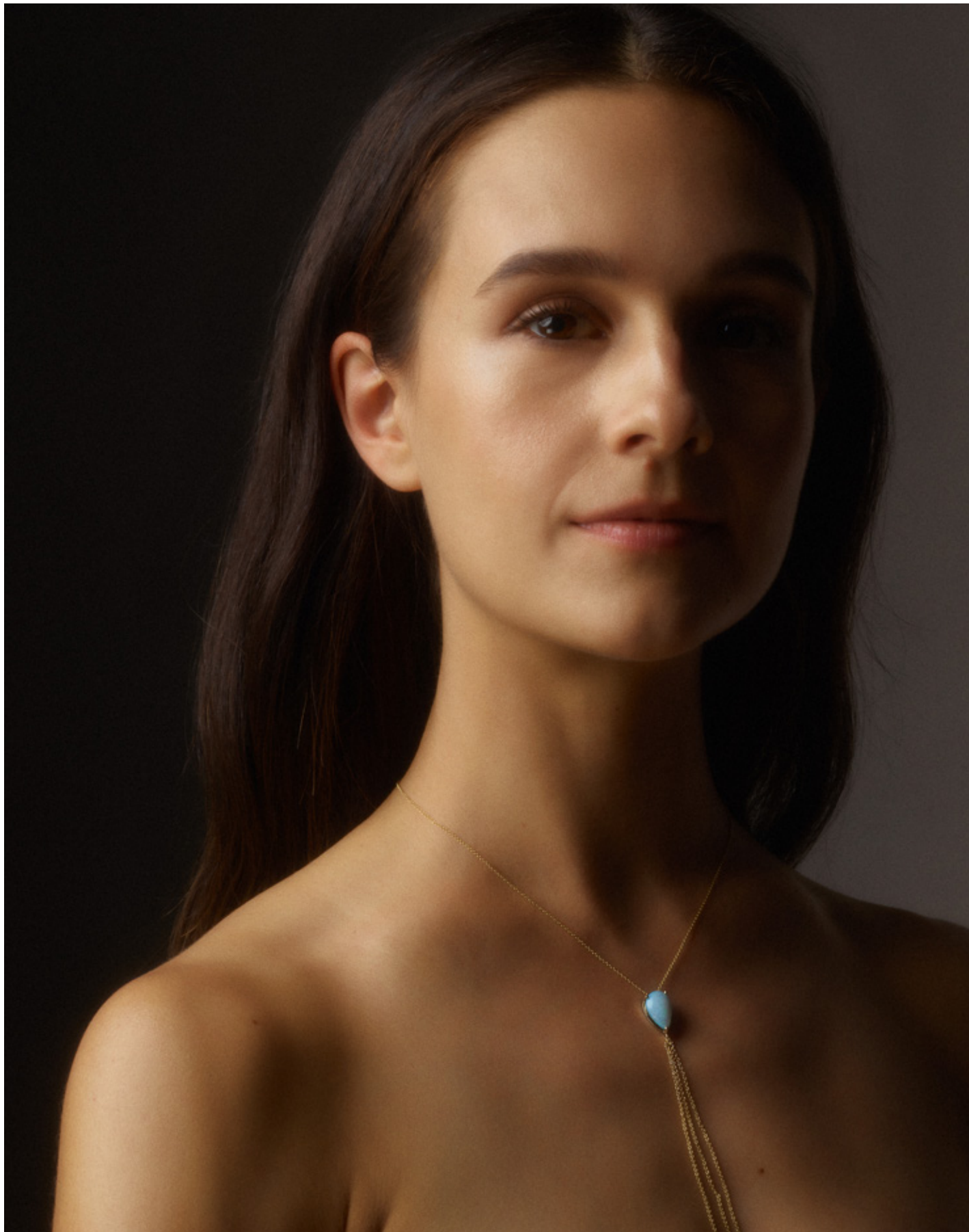
## Iris

---

ONE OF A KIND. 14K WHITE GOLD. BOULDER OPALS FROM YARAKA MINE, QUEENSLAND, AUSTRALIA (6.43 CARATS).  
NATURAL WHITE DIAMONDS (2.65 CARATS). 4.0 CM LONG X 1.0 CM WIDE. HOOK CLOSURE.







An opal teardrop to rest along the collarbone,  
lucent like fresh dew lit by the soft morning sun.

Finished with a wispy trail of the most  
gossamer, glimmery 14k gold.

## Talia

---

ONE OF A KIND. 14K YELLOW GOLD. BOULDER OPAL FROM MT. MARGARET, QUEENSLAND, AUSTRALIA (3.37 CARATS).  
1.35 CM LONG X 0.8 CM WIDE OPAL. 1.1 MM CABLE CHAIN ADJUSTABLE AT 16, 17, AND 18 INCHES.  
1.1 MM CABLE CHAIN DROP FRINGE AT LONGEST LENGTH 5 INCHES. SPRING CLASP CLOSURE.



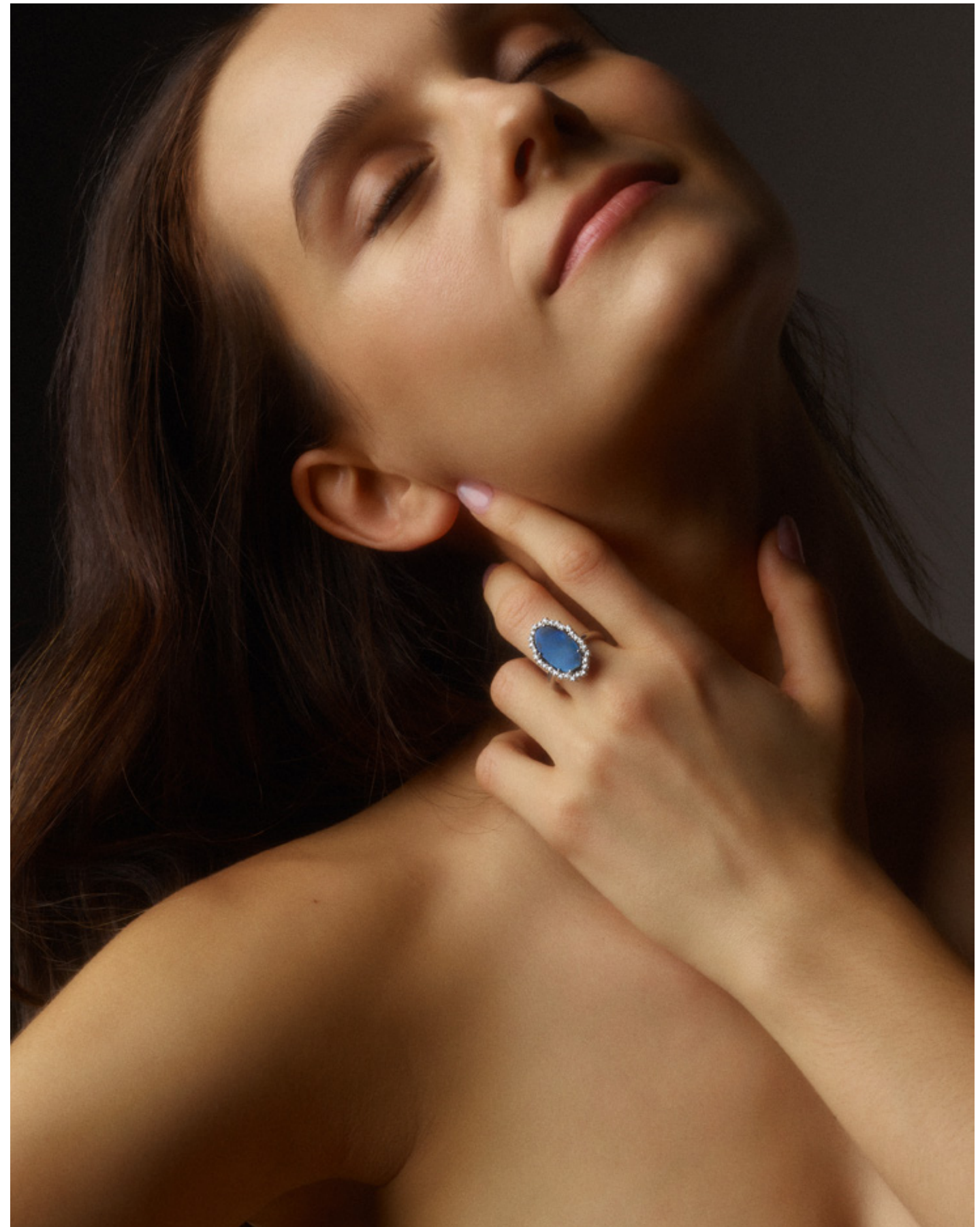
Otherworldly yet intimate—like a universe within itself, encircled in starlight.

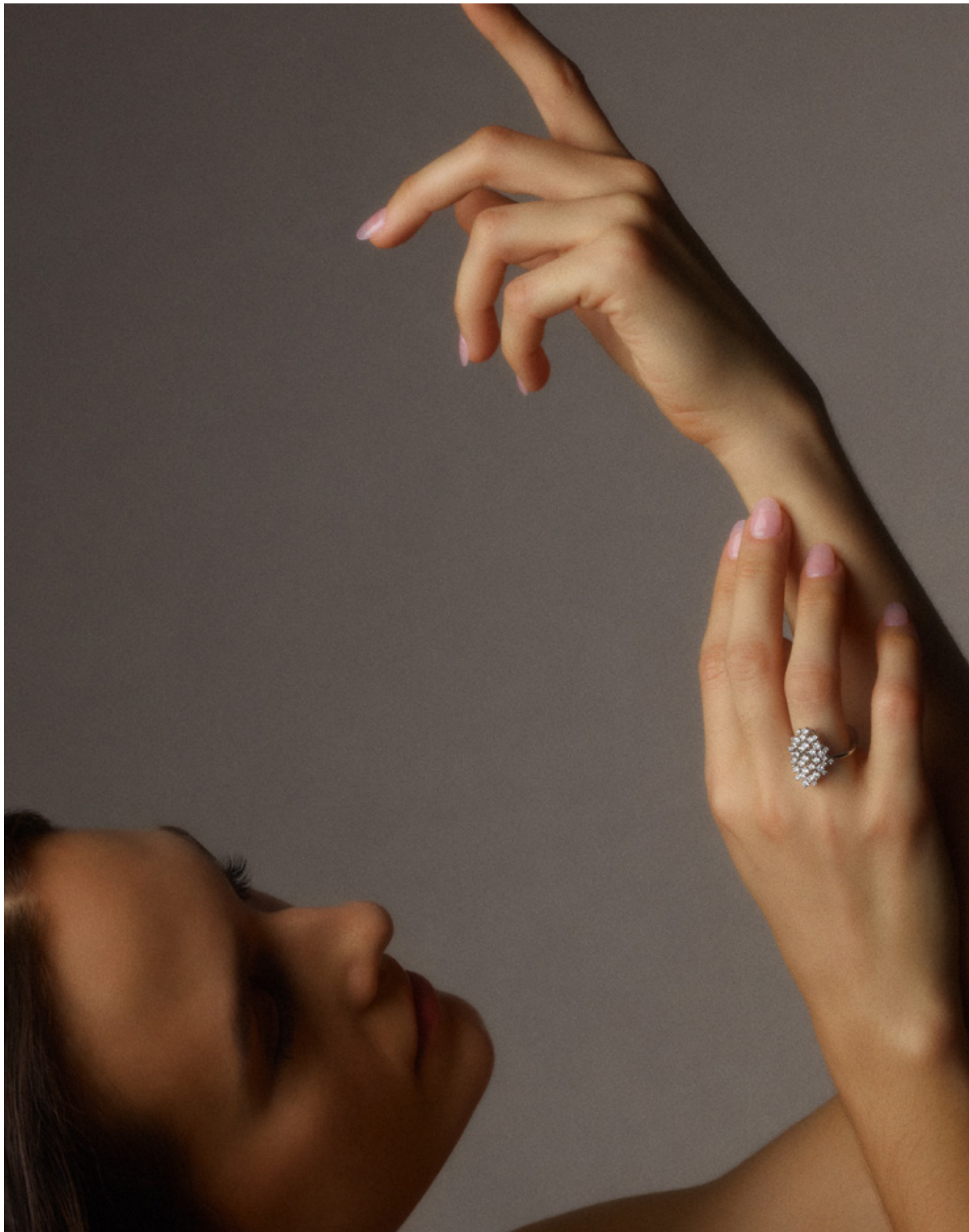
Sourced from Queensland, Australia, a deep teal boulder opal is delicately set by hand amidst diamonds in 14k white gold.

## Marissa

---

ONE OF A KIND. 14K WHITE GOLD. BOULDER OPAL FROM YARAKA MINE, QUEENSLAND, AUSTRALIA (6.02 CARATS). NATURAL WHITE DIAMONDS (0.28 CARATS). 2.2 CM LONG X 1.3 CM WIDE.





A ring unmatched in its effervescence,  
inspired by the spirit of Paris at night.

A flurry of diamonds appear to drift and float  
midair, mimicking the magic of the stars.

Each diamond is lovingly set to tell its story—  
of late night revelers, endless champagne,  
and starry-eyed romance.

## Celeste

---

14K WHITE GOLD. NATURAL WHITE DIAMONDS (0.87 CARATS).  
2.2 CM LENGTH X 1.55 CM WIDE.



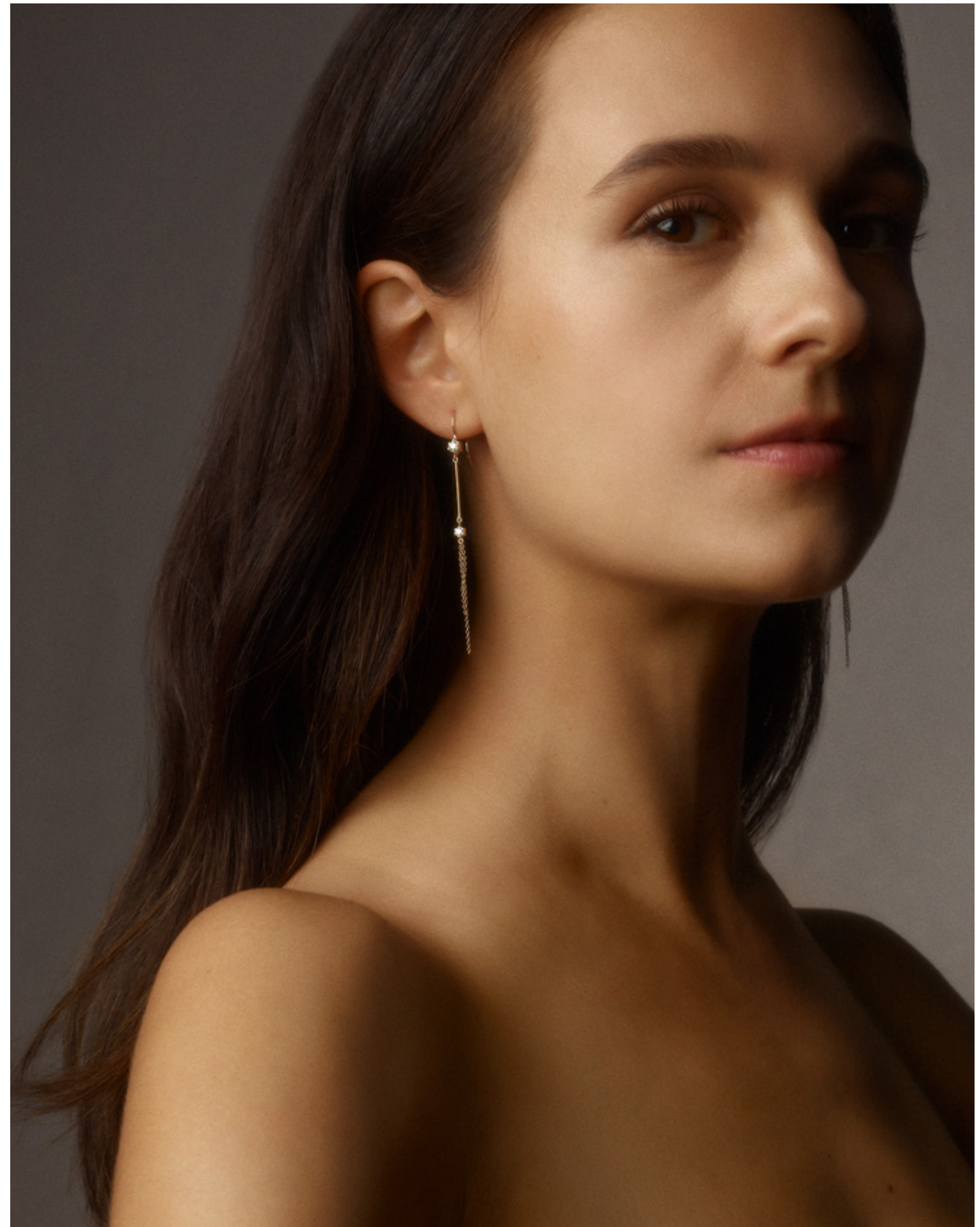
These hand-soldered drops sway with an alluring mix of fixed and fluid linearity, punctuated by two diamond stations.

A sylphlike creation of pure beauty.

## Deia

---

14K YELLOW, WHITE, AND ROSE GOLD. NATURAL WHITE DIAMONDS (0.32 CARATS).  
6.5 CM LONG. FRENCH HOOK.







Clusters of marquise diamonds catch light from every angle, with each stone skillfully set in 14k gold.

A true testament to our design ethos: ethereal elegance that endures.

## Clare

---

14K YELLOW, WHITE, AND ROSE GOLD. NATURAL WHITE DIAMONDS (1.80 CARATS).  
1.4 CM LONG. POST BACK CLOSURE.

Refined from raw metal by artisan hands and topped with offset marquise clusters, these sculptural marquise drop earrings are artful in their asymmetry.

## Faye

---

14K YELLOW, WHITE, AND ROSE GOLD. NATURAL WHITE DIAMONDS (0.80 CARATS).  
3.4 CM LONG. POST BACK CLOSURE.







LAURA STEPHANIE BENKOWSKI  
FOUNDER AND PRINCIPAL DESIGNER  
LAURA STEPHANIE JEWELRY

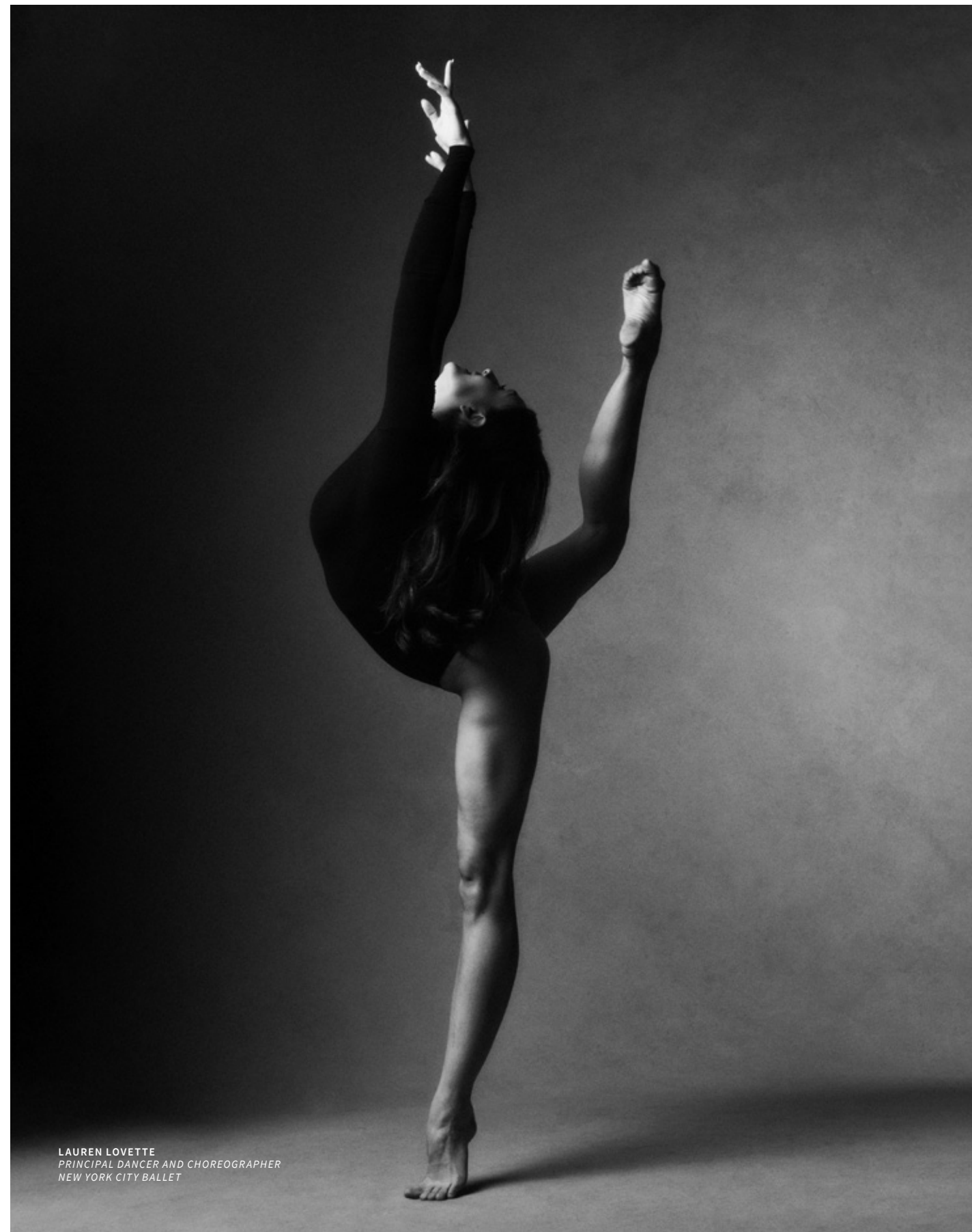
## A Note From The Designer

We wake up every day searching for meaning, connection and hope. And each day, I have looked to the horizon as a sanctuary for my soul. It is a way to know my place in the world. To be fully present within it, and reconnect with nature beyond my windows. Author Rachel Carson once wrote, “There is something infinitely healing in the repeated refrains of nature—the assurance that dawn comes after night, and spring after winter.” That rhythm of renewal has never felt more vital.

In my newest collection, I was inspired by the boundlessness of nature in its purest elements. Lucent opals from Australia became the vastness of oceans, immortalized in stone. Rich turquoise found in the American Southwest, like fallen pieces of desert skies in my hands. Diamonds strewn across my workspace shone so radiantly, they rivaled the stars. Precious metals pried from the earth have lived entire histories before they pass through many hands, to become part of yours. They become markers of memories, to evolve with every wear, and to remind us of who we are.

My hope is that these pieces stir something visceral within you—a realization that we are all just as much made by nature as the materials themselves—and just as beautiful, resilient, and infinite. To see beyond our horizons is to know that we’ve limited ourselves by creating boundaries in the first place.





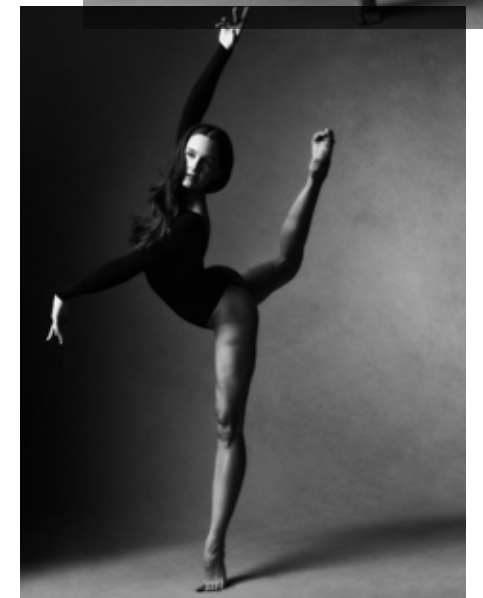
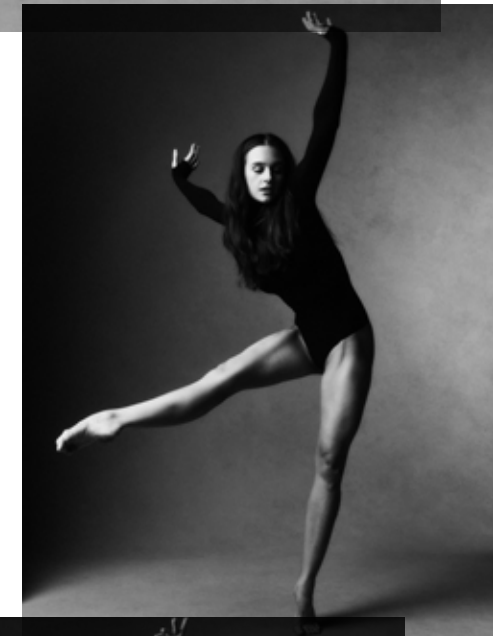
LAUREN LOVETTE  
PRINCIPAL DANCER AND CHOREOGRAPHER  
NEW YORK CITY BALLET

## Lauren Lovette

### ABOUT THE MODEL

Since 2015, Lauren Lovette has flourished on stage as one of the New York City Ballet's principal ballerinas. When she made her leap from dancer to choreographer, my admiration for her turned into aspiration. Female choreographers are rare in classical ballet, and she has since empowered women to take creative control—to find their own voices, and to have the confidence to use them. Lovette embodies what I admire most: a woman who lives fully and fiercely, and embraces her ambitions, strength, and femininity.

With the latest collection in mind, Lovette reimagined the idea of boundlessness. She explored the air in expansive movements—like stretching one leg and both arms upward, looking toward the sky—creating lines akin to the refraction of light within a jewel. Visuals of gleaming chains spurred smooth, fluid motions, as if she were moving through water. Each act was part of a meditation on ever-evolving shapes and forms, from the soft curve of a backbend to the artful asymmetry of an abstract stance. To watch her compose her steps as they intrinsically flowed through her was a true experience of living art.



# Featured Product Glossary

**Concierge**  
 concierge@laurastephanie.com  
 laurastephanie.com



PAGE 14  
**Mira Necklace**  
 IN 14K WHITE GOLD WITH AUSTRALIAN DARK CRYSTAL OPAL (6.29 CTW) AND DIAMONDS (0.98 CTW).



PAGE 17  
**Iris Earrings**  
 IN 14K WHITE GOLD WITH AUSTRALIAN BOULDER OPAL (6.43 CTW) AND DIAMONDS (2.65 CTW).



PAGE 18  
**Talía Necklace**  
 IN 14K YELLOW GOLD WITH AUSTRALIAN BOULDER OPAL (3.37 CTW).



PAGE 2  
**Aurina Earrings**  
 IN 14K WHITE GOLD WITH AUSTRALIAN BOULDER OPALS (23.45 CTW) AND DIAMONDS (1.71 CTW).



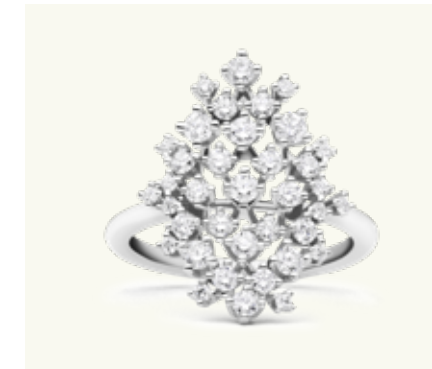
PAGE 5  
**Marissa Ring**  
 IN 14K WHITE GOLD WITH AUSTRALIAN BLACK OPAL (4.62 CTW) AND DIAMONDS (0.46 CTW).



PAGE 6  
**Sierra Earrings**  
 IN 14K WHITE GOLD WITH SLEEPING BEAUTY TURQUOISE (17.09 CTW), ROSE-CUT DIAMONDS (3.52 CTW), AND BRILLIANT-CUT DIAMONDS (0.16 CTW).



PAGE 21  
**Marissa Ring**  
 IN 14K WHITE GOLD WITH AUSTRALIAN BOULDER OPAL (6.02 CTW) AND DIAMONDS (0.28 CTW).



PAGE 22  
**Celeste Ring**  
 IN 14K WHITE GOLD WITH DIAMONDS (0.87 CTW).



PAGE 25  
**Deia Earrings**  
 IN 14K YELLOW GOLD WITH DIAMONDS (0.32 CTW). ALSO AVAILABLE IN WHITE GOLD AND ROSE GOLD.



PAGE 9  
**Marissa Ring**  
 IN 14K WHITE GOLD WITH AUSTRALIAN LIGHT OPAL (6.05 CTW) AND DIAMONDS (0.46 CTW).



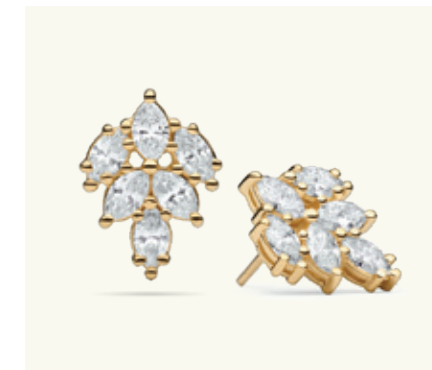
PAGE 10  
**Kachina Earrings**  
 IN 14K WHITE GOLD WITH NEVADA BLUE DYER TURQUOISE (6.70 CTW) AND DIAMONDS (1.96CTW).



PAGE 13  
**Autumn Ring**  
 IN 14K ROSE GOLD WITH AUSTRALIAN LIGHT OPAL (5.62 CTW).



PAGE 26  
**Faye Earrings**  
 IN 14K YELLOW GOLD WITH DIAMONDS (0.80 CTW). ALSO AVAILABLE IN WHITE GOLD AND ROSE GOLD.



PAGE 29  
**Clare Earrings**  
 IN 14K YELLOW GOLD WITH DIAMONDS (1.80 CTW). ALSO AVAILABLE IN WHITE GOLD AND ROSE GOLD.





CREATIVE DIRECTION AND PRODUCTION BY **LAURA STEPHANIE**

MODEL PHOTOGRAPHY BY **STAS KOMAROVSKI**

MODEL **LAUREN LOVETTE**

MAKEUP BY **CYNDLE KOMAROVSKI**

HAIR BY **ANTHONY CAMPBELL**

JEWELRY PHOTOGRAPHY BY **JON PUSHNIK**

BOOK DESIGN BY **ROB MOSTRANSKY**

COPYWRITING BY **STEPHANIE CHEN**