

"Centrally manage, secure and protect home and business PCs, smartphones and tablets from the cloud."

Terry Walsh

Manage PCs and Mobiles With Microsoft Intune

eBook Edition

Published by We Got Served Ltd.

Copyright © 2015 by Terry Walsh. All rights reserved.

No part of this book may be reproduced in any form or by any electronic or mechanical means including information storage and retrieval systems, without permission in writing from the author. The only exception is by a reviewer, who may quote short excerpts in a review.

First Published: January 2015

Limit of Liability/Disclaimer of Warranty: *The publisher and author make no representations or warranties with respect to the accuracy or completeness of this content of this work and specifically disclaim all warranties, including without limitation warranties of fitness for a particular purpose. Although the author and publisher have made every effort to ensure that the information in this book was correct at press time, the author and publisher do not assume and hereby disclaim any liability to any party for any loss, damage, or disruption caused by errors or omissions, whether such errors or omissions result from negligence, accident, or any other cause.*

The advice outlined in this book may not be suitable for every situation. This work is sold with the understanding that the publisher and author are not engaged in providing professional services. If professional assistance is required, the services of a competent professional should be sought. Neither the publisher, nor the author shall be liable for damages arising herefrom. The fact that an organisation, service provider or website is referred to in this work as a citation and/or a potential source of further information does not mean that the author or the publisher endorses the information the organisation, service provider or website may provide.

Microsoft, Office 365, SharePoint, Windows, Hyper-V, Microsoft Intune, Windows Phone and Windows Server are either registered trademarks or trademarks of Microsoft Corporation in the United States and/or other countries.

Apple, iPad, iPhone, Mac and OS X are trademarks of Apple Inc., registered in the U.S. and other countries.

IOS is a trademark or registered trademark of Cisco in the U.S. and other countries and is used under license.

Android is a trademark of Google Inc.

Java, MySQL, Oracle and VirtualBox are trademarks of Oracle Corporation.

Dell is a trademark of Dell Inc.

About the Author

Terry Walsh



Terry Walsh is the Owner and Editor of We Got Served (<http://www.wegoterved.com>), which he established in 2007 to share his own experiences with emerging Home Server platforms.

Since then, the site has grown to cover a wide range of digital home, consumer electronics, and small business product categories but retains at its core the mission to help users make the most of technology.

Terry graduated from the University of Durham in 1995 with a Bachelor of Arts in English Language and Literature and currently works in the telecommunications industry, writing about technology in his spare time. Prior to starting WGS, Terry cut his teeth online in 1993 building and operating a number of successful alternative music websites and communities for UK artists.

Born and raised in Liverpool, England and now living in Silverstone, UK with his wife and two sons, Terry has been awarded Microsoft's Most Valuable Professional Award each year since 2008 for his work on We Got Served.

Over the last two years, Terry has authored a number of Mac and Windows home server guides, including *Using Windows Server 2012 R2 Essentials*, *Using OS X Yosemite Server at Home*, *Using OS X Mavericks Server at Home*, *Building a Home Server With Windows 8.1*, *Windows Home Server 2011 Step by Step*, *Using OS X Lion Server at Home*, *Using OS X Mountain Lion Server at Home*, *25 Essential Windows Home Server Projects* and *Building a Windows Home Theatre PC*. He has also edited a number of titles, including *Using Windows Home Server*, *25 Essential Windows Home Server Projects Volume 2* and *15 Essential Windows 8 Projects*.

You can contact him at terry@wegotserved.co.uk, or via Twitter at [@wegotserved](https://twitter.com/wegoterved).

About We Got Served

We Got Served is a popular technology news and community site which was founded in February 2007. It is written, edited and moderated by a dedicated and knowledgeable team of technology enthusiasts across the world who are focused on bringing you the latest news, reviews, tutorials and support for the products you're using today and will be using tomorrow.

We created We Got Served as a place to learn about new technology, help readers make the most of the products and services they use, and most importantly to create a community where readers can learn, discuss and share their experience and knowledge with others in need of support. However you use the site, we hope you enjoy it.

Other Books by Terry Walsh

We Got Served publishes a wide range of guides for Microsoft Windows and Apple Mac OS X. Click the titles below to view online or visit <http://store.wegotserverd.com>.

- [25 Essential Windows Home Server Projects](#)
- [Build a Computer From Scratch](#)
- [Building a Home Server With Windows 8.1](#)
- [Building a Windows Home Theatre PC](#)
- [Manage Your Music and Video Metadata](#)
- [Using OS X Lion Server at Home](#)
- [Using OS X Mavericks Server at Home](#)
- [Using OS X Mountain Lion Server at Home](#)
- [Using OS X Yosemite Server at Home](#)
- [Using Windows Server 2012 R2 Essentials](#)
- [Windows Home Server 2011 Step by Step](#)

Revision History

v1.0	January 2015 Initial release
-------------	--

Please Register This Book

Whilst the concept of registering a book may sound a little strange, I heartily invite you to do so! Registering your email with us allows us to inform you of updates and amendments to the book, and let you know about new books we're writing as well as some offers on our other titles.

Hey, if that's not enough, you know us so we'd like to know you too!

So head over to <http://store.wegotsserved.com/pages/registration> and spend 23.2 seconds signing up!

Did You Purchase This eBook From Amazon or Apple?

Many of our readers prefer to purchase our eBooks for their Kindle or iPad via Amazon or Apple. If you have purchased this eBook through one of those stores then note that the image quality of screenshots illustrating the walkthroughs may be **heavily** compressed.

Unfortunately, Amazon and Apple place limits on the file size of eBooks they allow to be sold through their stores. So, firstly, apologies if you experience poor quality graphics from your purchase at Amazon or Apple - that is unfortunately out of our control. However, don't despair - we can get you set up with full quality ePub, PDF and Mobi files that will work on a host of devices, and will look great.

Here's how:

1. Please register your purchase at <http://store.wegotsserved.com/pages/registration>.
2. Please contact us at <http://support.wegotsserved.com/customer/portal/emails/new> explaining that you purchased this title at Amazon or Apple. Attach an image of your receipt as proof of purchase.
3. We'll set up new download links for you to grab full quality versions of the eBook, which you can simply drag and drop to your favourite mobile device from a PC or Mac via a USB cable. Alternatively, view the PDF directly on a computer.
4. Please purchase your eBooks directly from us at <http://store.wegotsserved.com> to avoid future issues (you may get a little money off in the future too!)

Manage PCs and Mobiles With Microsoft Intune

A We Got Served “How To” Guide

Contents

Sign Up for Microsoft Intune	9
Integrate Microsoft Intune with Windows Server Essentials	10
Adding Your Clients to Microsoft Intune	22
Adding and Managing Microsoft Intune Users	41
Adding Users from the Microsoft Intune Account Portal	52
Managing and Deleting Microsoft Intune User Accounts	57
Creating User and Device Groups	58
Create a User Group	59
Create a Device Group	66
Editing and Deleting Groups	72

Protect Your Windows PCs With Endpoint Protection & Windows Firewall	75
The Microsoft Intune Endpoint Protection Client	76
Managing Endpoint Protection in Microsoft Intune	88
Configure Endpoint Protection Policy in Microsoft Intune	90
Protecting PCs Remotely With Microsoft Intune Endpoint Protection	103
Configure PC Settings With Microsoft Intune Policies	104
Managing Device Updates in Microsoft Intune	107
Deploying Software Packages With Microsoft Intune	128
Managing and Securing Mobile Devices	205

Manage PCs and Mobiles With Microsoft Intune

“As your network grows, with PCs, smartphones and tablets added over time, it can become difficult to manage. Every device needs care and attention - software updates, malware protection, security configuration - it can be a real chore. But wait! There’s an answer...”

Microsoft Intune (previously known as, and in some cases still known as, Windows Intune) is a cloud-based device and policy management platform which Microsoft launched in 2011. It’s specifically aimed at small and medium business owners and administrators and can manage organisations with up to five hundred PCs.

Windows, Windows RT, Windows Phone 8+, Apple iOS, and Android devices can all be managed through the subscription-based service. Using Intune, an administrator can distribute and install software applications, create and deploy management and security policies, ensure PCs and devices are continually updated with the latest operating system patches and features and keep a check on hardware and software computer inventory.

In a similar fashion to Office 365 (but using a different infrastructure) Microsoft Intune can also help protect your mobile devices, offering Remote Lock and Wipe features for mobile devices and the establishment of secure password policies.

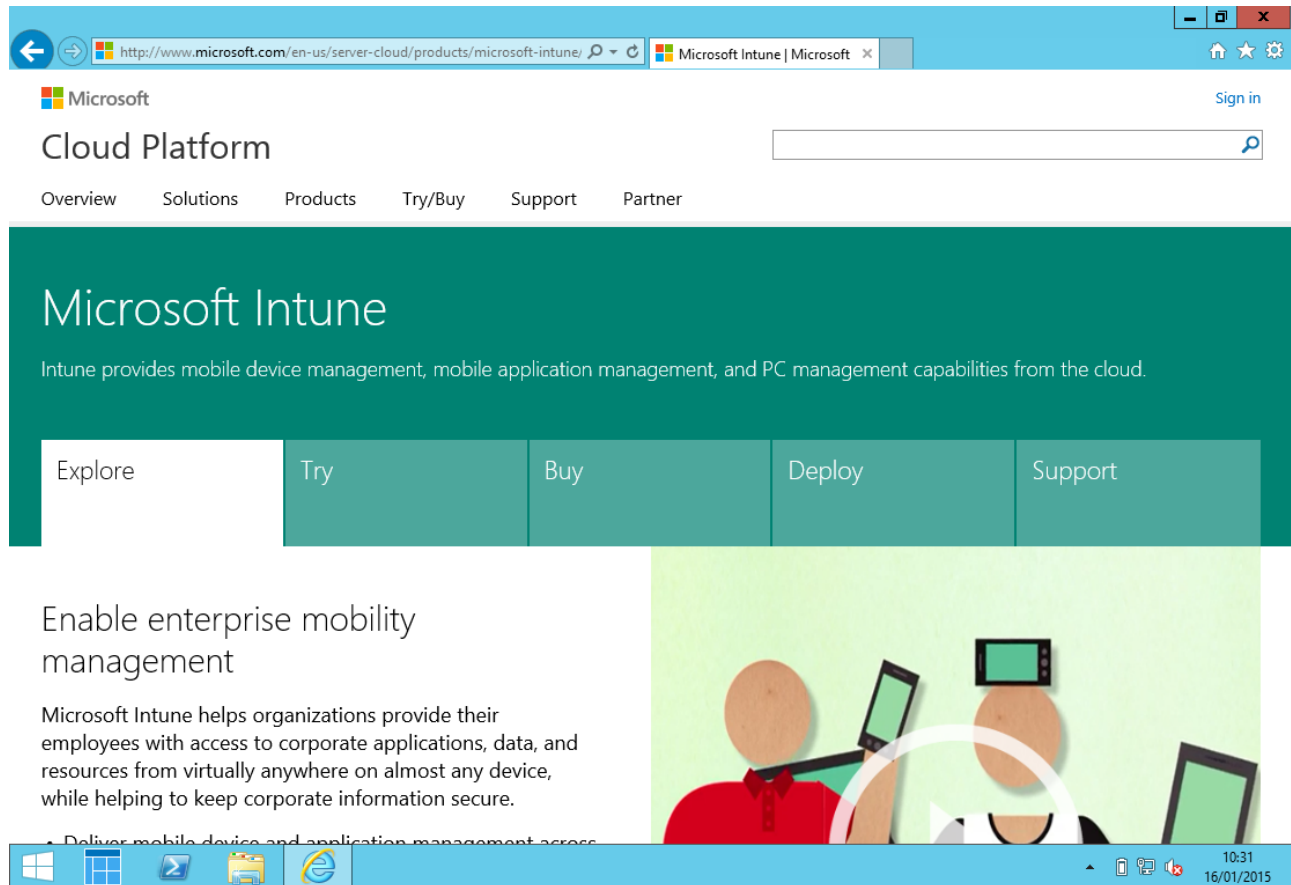
So, if that sounds like the kind of feature set you’d like to check out, you’re going to enjoy the next two hundred or so pages! Whether your home or small business network is based around the Windows Server platform, or whether you simply have a bunch of Windows PCs, smartphones and tablets (henceforth known as *clients*) that you need to manage, everyone’s invited!

Sign Up for Microsoft Intune

Microsoft Intune is a subscription service that you purchase and work with online. As is common with Microsoft services, you can licence Microsoft Intune a number of ways - as part of a large enterprise agreement with many users and devices, or simply on a per user basis. Current pricing is very reasonable - £3.70/\$6.00 per user.

Head to the Microsoft Intune website at <http://www.microsoft.com/en-us/server-cloud/products/microsoft-intune/> to sign up for a subscription. You can also take a detailed look at Microsoft Intune's features and device support options.

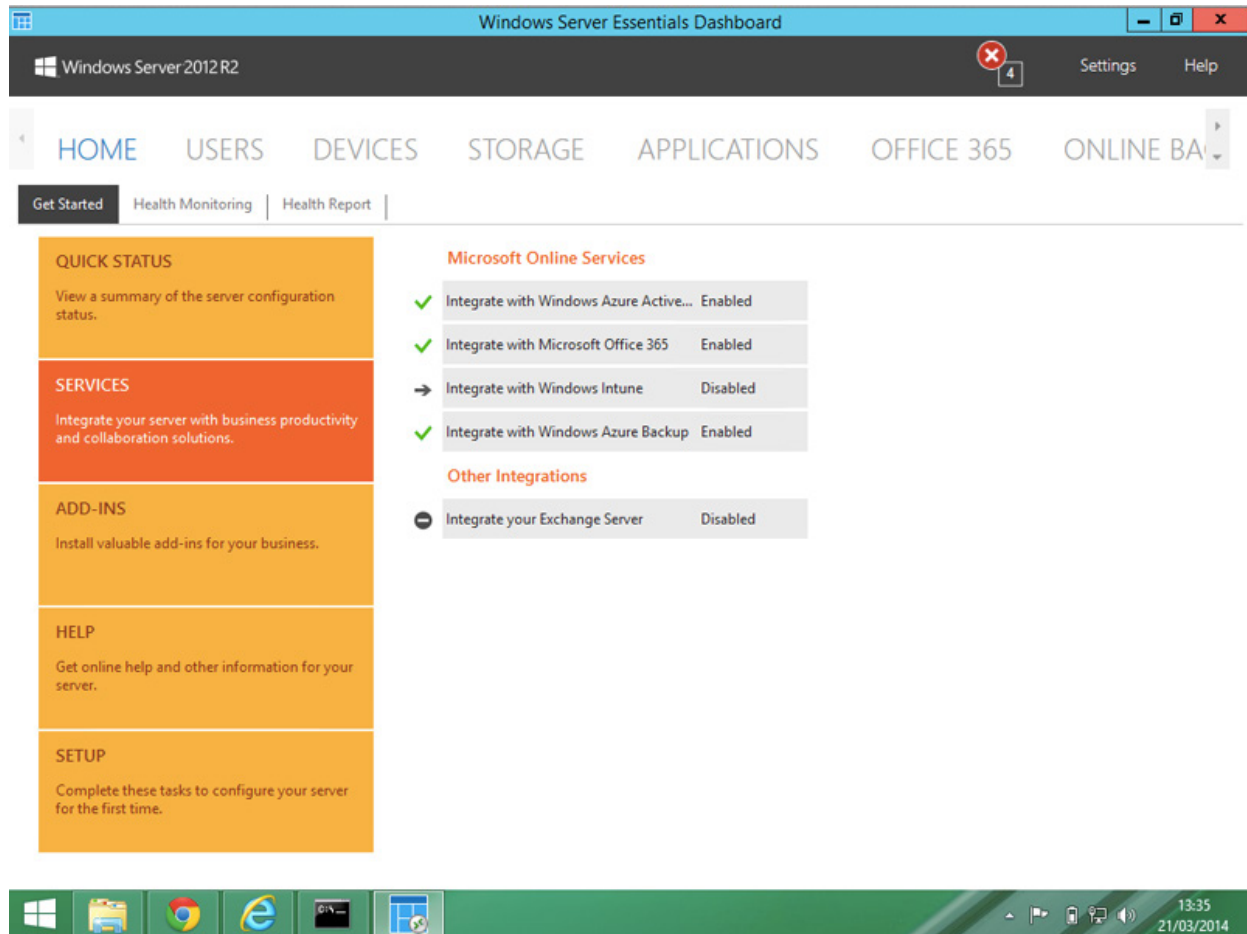
A time limited free trial is available - I'd highly recommend to try the service out and play along as we step through the platform's features!



Sign up at the Microsoft Intune website.

Integrate Microsoft Intune with Windows Server Essentials

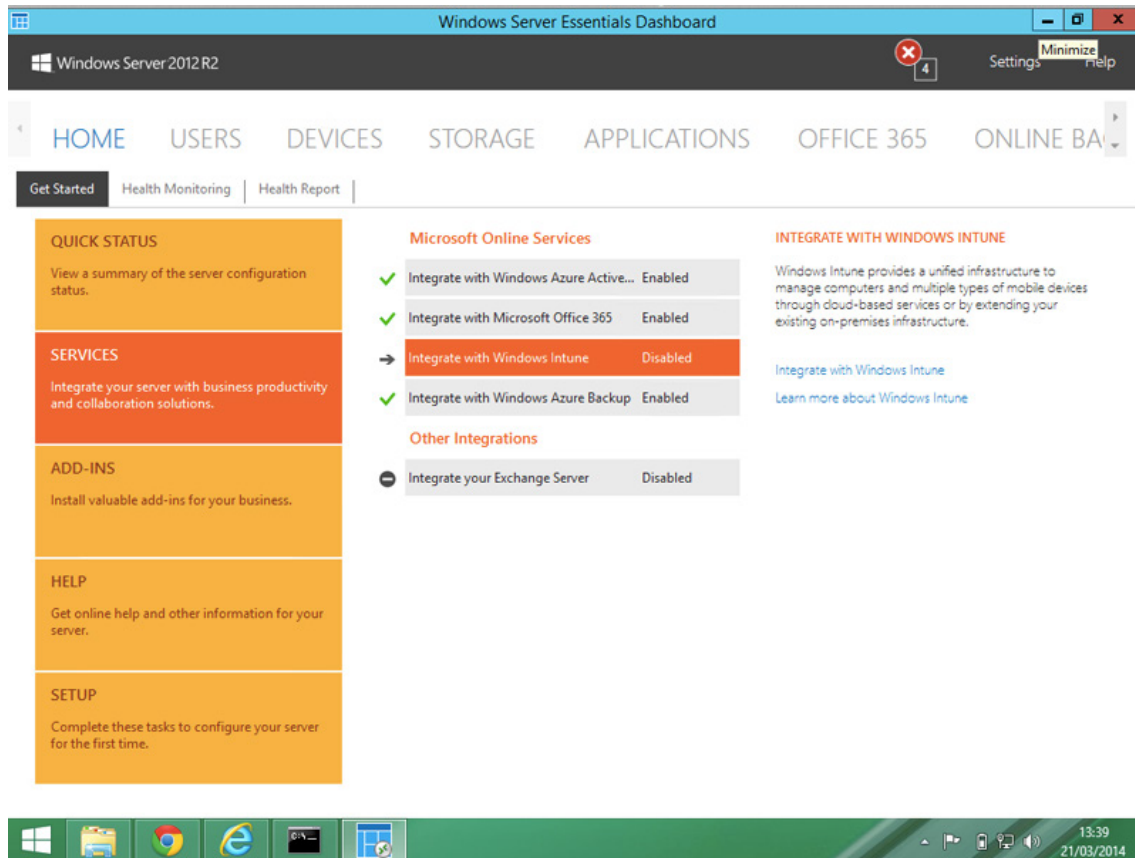
The good news for Windows Server Essentials users is that Microsoft Intune accounts are neatly integrated with the Windows Server Essential dashboard. Open up the Windows Server Essentials **Dashboard Home tab** and click on the **Services** section.



Windows Server 2012 R2 Essentials integrates with a number of cloud services.

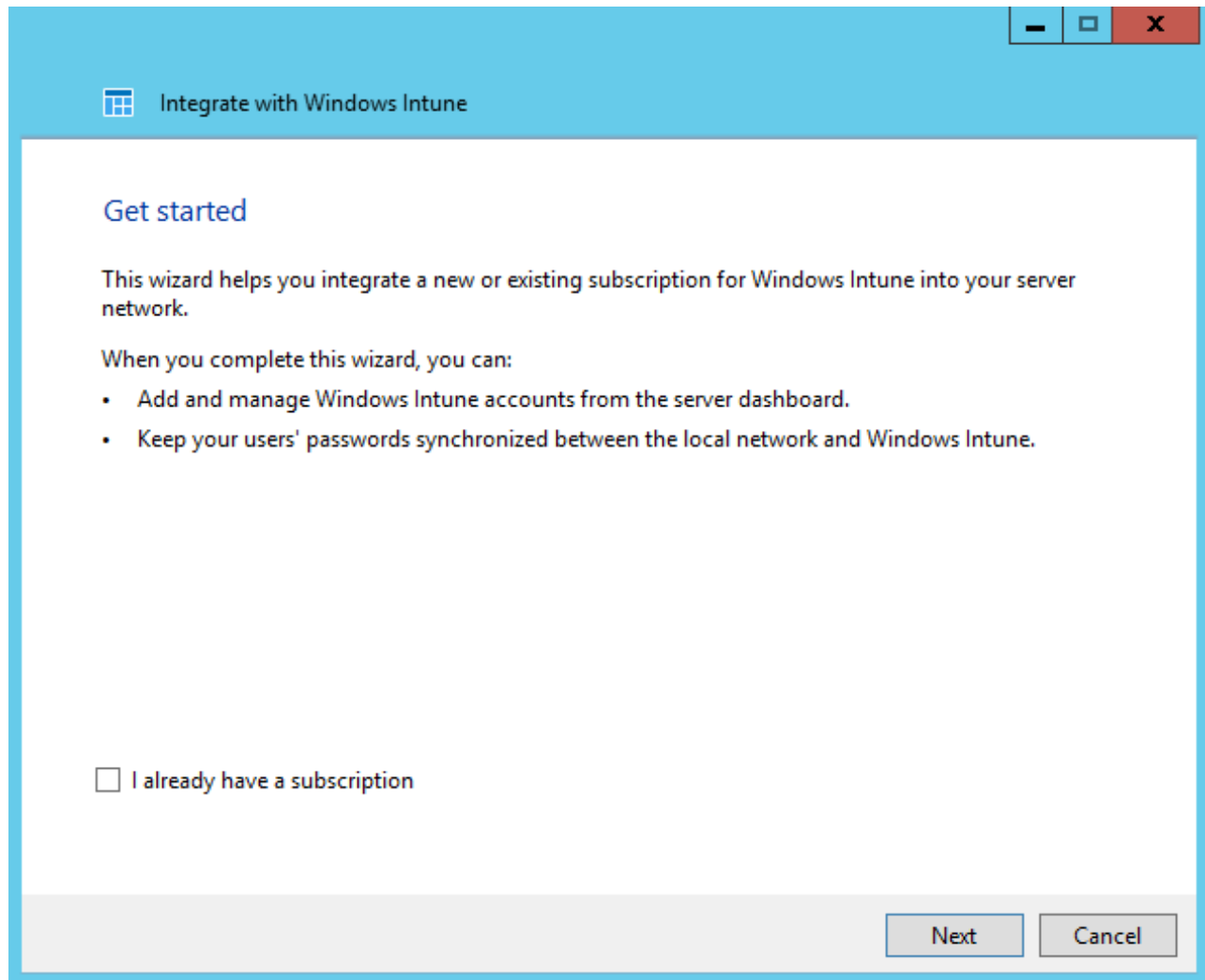
In the list of services available, click **Integrate with Windows Intune**. Yes, the Windows Server 2012 R2 Essentials Dashboard still refers to the service using its old name - any reference to Microsoft Intune or Windows Intune you see is referring to the same service!

You'll be offered an explanation of the Intune service over on the right hand side of the screen, plus two options.



Your Microsoft Intune installation options.

The bottom task, **Learn more about Windows Intune** will open up a browser with a run-down of the Microsoft Intune feature set. For now, click the first option, **Integrate with Windows Intune** to get started.

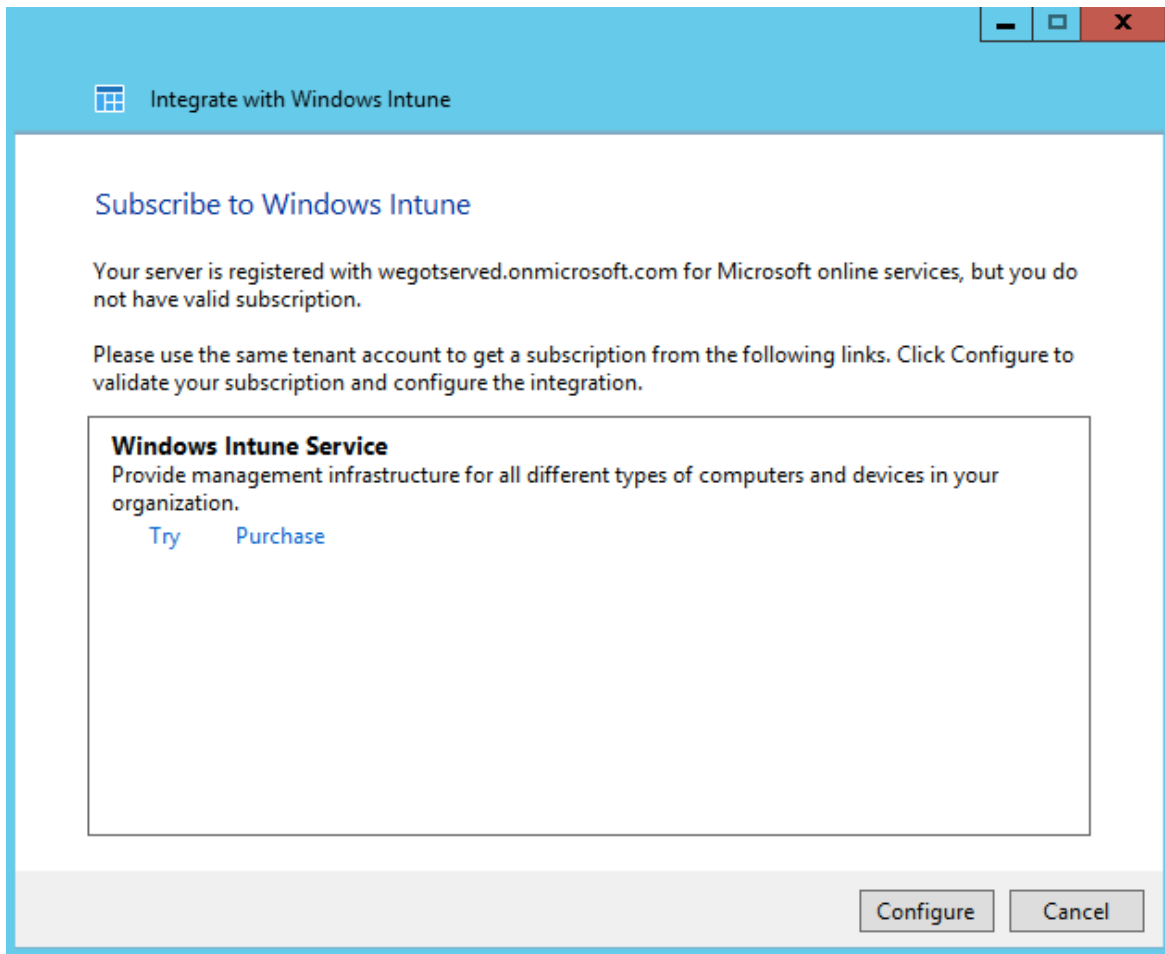


Getting started with Microsoft Intune.

And indeed, *Get started* is the call to action in the integration wizard that appears. We need to either purchase a Microsoft Intune subscription, use an existing subscription (if you already have one set-up) or take advantage of the free trial account - any of these account options can be integrated into the Windows Server 2012 R2 Essentials Dashboard.

Integration allows you to add and manage Microsoft Intune subscriptions directly from the Dashboard (rather than use Microsoft's web-based console) and keeps your Intune passwords synchronised between your local network and the Intune service.

If you already have a subscription, simply check the **I already have a subscription** box at the bottom of the panel. Everyone else, leave it unchecked. Click **Next** to continue.



The Windows Intune integration wizard offers a free trial or subscription to the service.

Decide whether you wish to trial the service or jump right into a purchase and click the appropriate link. For this walkthrough, I'll be using the free 30 day trial. If you find (as I did) that the **Try** link doesn't work correctly, simply use Google or Bing to find the Microsoft Intune site online and register for the trial there.

Once you arrive at the Microsoft Intune website, you'll need to navigate your way to the sign-up form through the respective **Try** or **Buy** tabs on the site itself - at the time of writing, the purchase journey isn't the most integrated.

The screenshot shows a web browser window with the URL <https://account.manage.microsoft.com/Signup/MainSignUp.aspx>. The page title is "Microsoft Intune". The main heading is "Sign up". Below the heading, there is a paragraph: "If your company is already using Microsoft Online Services for services such as Microsoft Office 365, we recommend that you use the same user ID to sign up. [Learn more](#) about why it is important to sign up with the same User ID. [Sign in](#)". To the right of this paragraph is a red asterisk and the word "Required".

The sign-up form includes the following fields:

- * Country or region: A dropdown menu with "Select" as the current selection. Below the dropdown is the text "Can't be changed after signup. [Why?](#)".
- * First name: A text input field.
- * Last name: A text input field.
- * Organization name: A text input field.
- * Address 1: A text input field.
- Address 2: A text input field.
- Address 3: A text input field.
- * City: A text input field.
- County: A text input field.
- * Postal code: A text input field.
- * Phone number: A text input field.
- * Email address: A text input field.

To the right of the sign-up form is a "Trial" section. It has the heading "Trial" and the sub-heading "Windows Intune". Below this is the text "25 User Licenses" in green. The description reads: "Windows Intune™ simplifies how businesses manage and secure PCs and mobile devices using Windows® cloud services and System Center Configuration Manager."

The browser's taskbar at the bottom shows the Windows Start button, several application icons, and the system clock displaying "12:17 17/11/2014".

Signing up for Microsoft Intune.

If you've already integrated your server with Office 365, use the same Microsoft Online account credentials to register with Microsoft Intune - that way, everything will be tied in correctly to the same identity. To do so, use the (reasonably easy to miss) **Sign In** link in the top paragraph of the web page.

Sign up is very quick and in a couple of shakes, you'll arrive at the Microsoft Intune Account portal.