

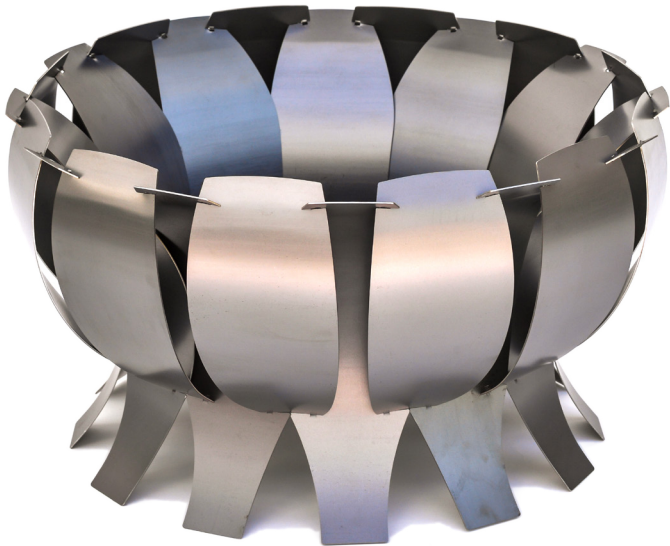
# FIRE PIT



## ASSEMBLY MANUAL

**FOLLOW ALL STEPS EXACTLY.**

**ASSEMBLY VIDEO:** Access on Desert Steel channel on youtube.com



Variations/marble of the steel is natural and not a defect. Fire pit will naturally patina and turn rusted color over time.

**Stainless steel version will NOT rust.**

### TOOLS NEEDED:

gloves  
hammer/mallet  
flat head #3 screwdriver  
pliers

### PARTS INCLUDED:

12 leg panels (A)  
12 side panels (B)  
2 bottom panels

- 1** Peel protective sheets off all panels (if applicable).
- 2** Start with a long panel (A). Add a short side panel (B) on one side.
- 3** Align bottom slots first and slide together (Fig. 1).
- 4** Align top slots and slide together (Fig. 2).

**NOTE:** Use hammer to gently tap panels into position (Fig. 2).

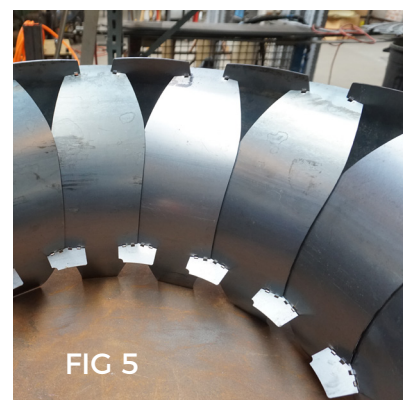
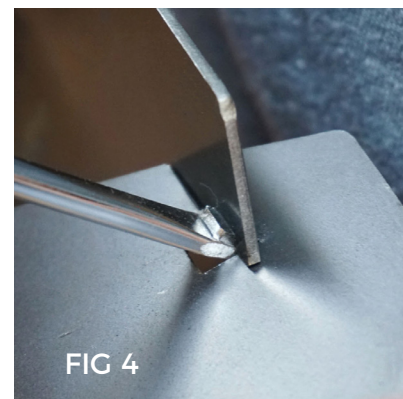
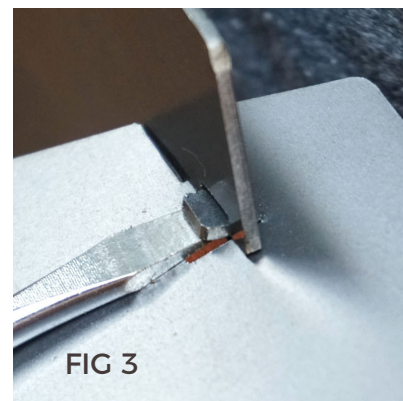
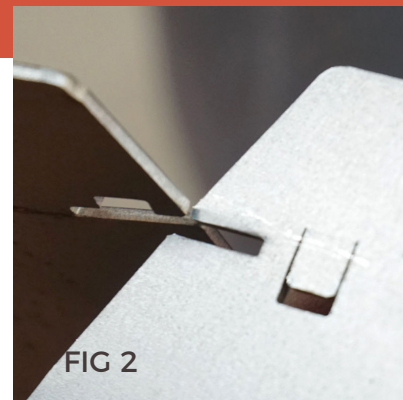
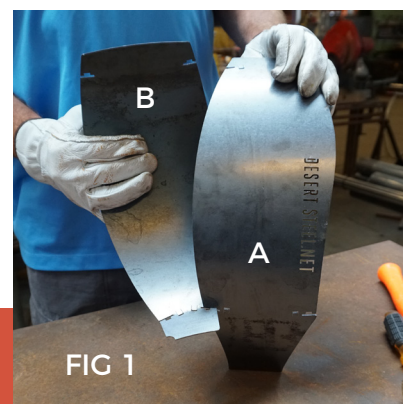
- 5** Using flat head #3 screwdriver, bend tabs (Figs. 3) securely into notch (Fig. 4). Each panel has six tabs, two on top, four on bottom.

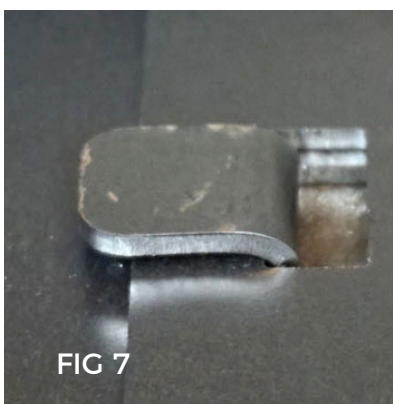
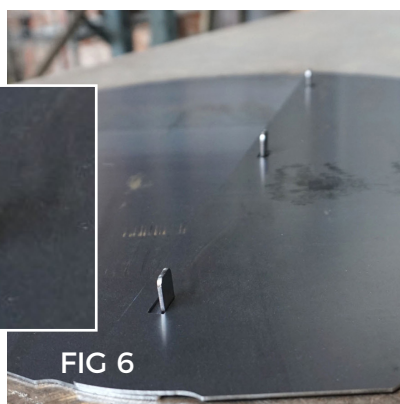
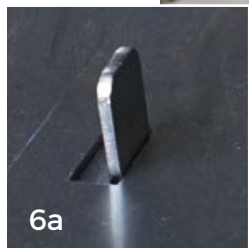
**NOTE:** Before adding another panel, you **MUST** lock into position all tabs on one side, one on top and two on bottom.

- 6** Repeat steps 3-5 alternating A & B panels (Fig. 5) until all but one side/B panel remains. Do not connect last side/B panel.

**IMPORTANT:** Do NOT add last side panel before completing steps 7-9.

**Reverse for completion.**





- 7** Bend up tabs on bottom panel just past 90 degrees (Fig. 6a).
- 8** Take both floor panels and connect by overlapping (Fig. 6). Use hammer to bend tabs securely (Fig. 7).
- 9** Insert the floor, tabs facing down (Fig. 8).
- 10** Once floor is placed in bottom of pit, add the last B panel, repeating steps 3-5 to close/complete fire pit.

**PLEASE READ AND UNDERSTAND THIS ENTIRE MANUAL  
BEFORE ATTEMPTING TO ASSEMBLE OR OPERATE THE PRODUCT.**

## SAFETY INSTRUCTIONS

### WARNING

- For outdoor use only! Never leave fire unattended!
- **DO NOT USE THE FIRE PIT TO COOK FOOD!** This fire pit is not designed for grilling food.
- **DO NOT allow children or pets near the fire pit without supervision.**
- **DO NOT touch** the surface of the fire pit while in use as it may cause burns.
- **NEVER burn in vehicles, tents or indoors.** CARBON MONOXIDE HAZARD.
- **DO NOT use water** to extinguish as this is dangerous and can cause damage to the fire pit.

### CAUTION

- Burn **only untreated wood or fire logs** in this fire pit.
- **DO NOT use gasoline or kerosene** to start the fire in this fire pit.
- **DO NOT use** this unit on a wood deck, long or dry grass and/or leaves, or **on combustible surfaces.**
- **DO NOT attempt to move** the fire pit while it is hot or in use.
- Place the fire pit **no closer than 8 feet from walls or combustibles** during use.
- Adequate fire extinguishing material should be readily available.

### PROPOSITION 65 WARNING

Fuel used in wood and charcoal burning appliances and the products of combustion of such fuels contain chemicals known in the state of California to cause cancer, birth defects or other reproductive harm.



**316-282-2244**  
**info@desertsteel.net**

**DESERT STEEL**

**312 N Mosley St**  
**Wichita, KS 67202**