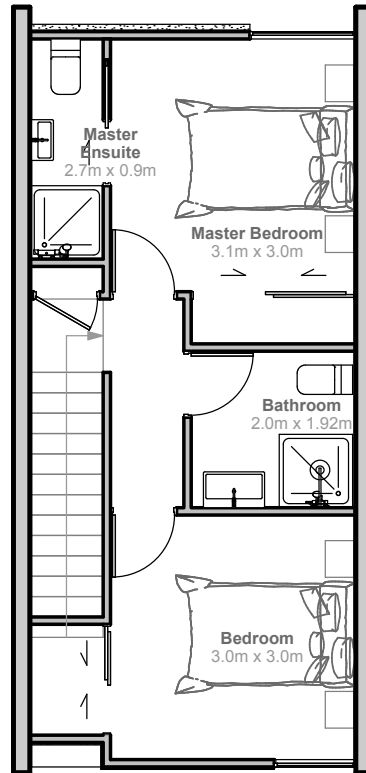
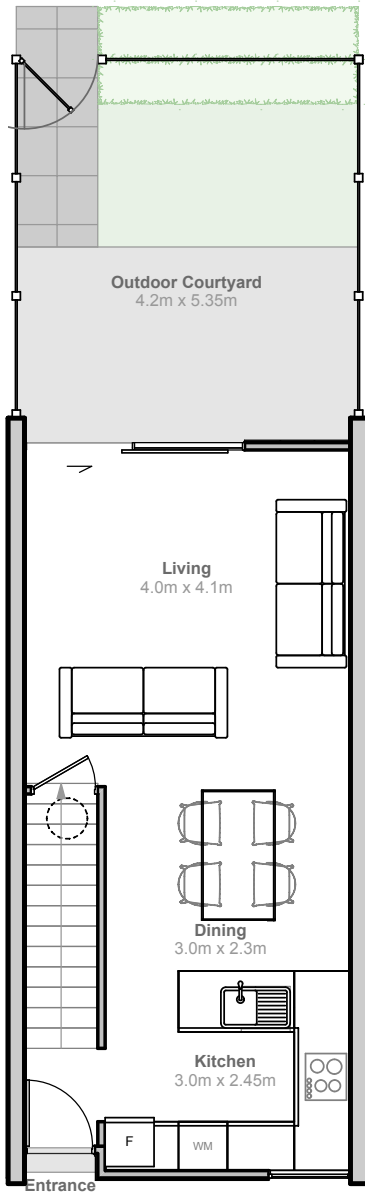


SOHO

CHRISTCHURCH

118 SALISBURY STREET



T01 - T06 GROUND FLOOR & LEVEL 2 TWO BEDROOM TOWNHOUSE

2 BEDROOMS
2 BATHROOMS
1 PARKING SPACE
PRIVATE OUTDOOR COURTYARD

INTERIOR	75	SQM
OUTDOOR COURTYARD	22	SQM
PARKING SPACE	12.5	SQM
TOTAL	109.5	SQM

