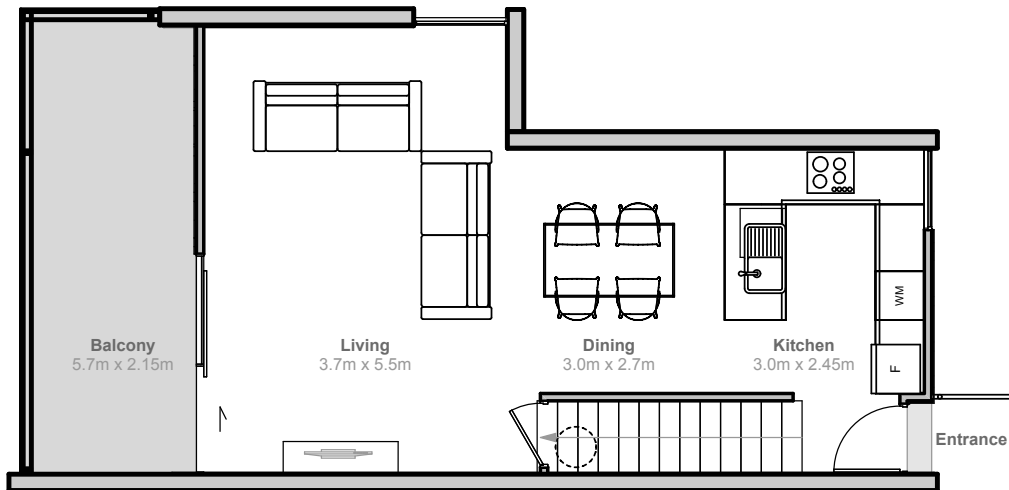
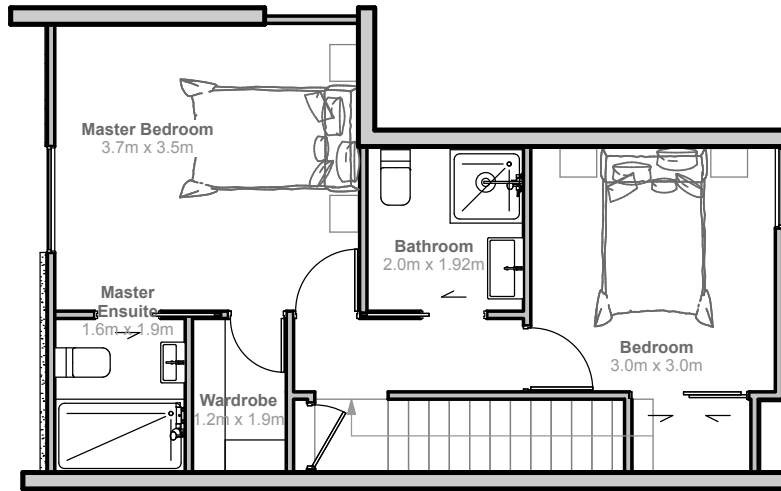


# SOHO

CHRISTCHURCH

118 SALISBURY STREET



## A313 LEVELS 3 & 4 CORNER TWO BEDROOM PENTHOUSE APARTMENT

2 BEDROOMS  
2 BATHROOMS  
1 PARKING SPACE  
PRIVATE OUTDOOR COURTYARD

INTERIOR	87	SQM
BALCONY	12	SQM
PARKING SPACE	12.5	SQM
TOTAL	111.5	SQM

