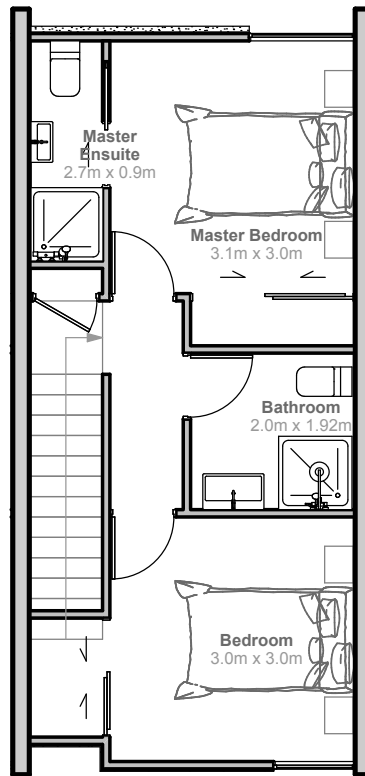
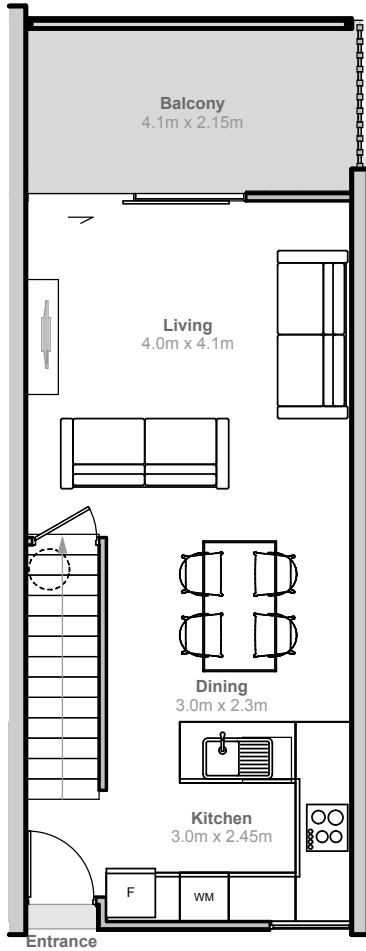


SOHO

CHRISTCHURCH
118 SALISBURY STREET



A301 - A312 LEVELS 3 & 4 TWO BEDROOM PENTHOUSE APARTMENT

2 BEDROOMS
2 BATHROOMS
1 PARKING SPACE
PRIVATE OUTDOOR COURTYARD

INTERIOR	75	SQM
BALCONY	9	SQM
PARKING SPACE	12.5	SQM
TOTAL	96.5	SQM

