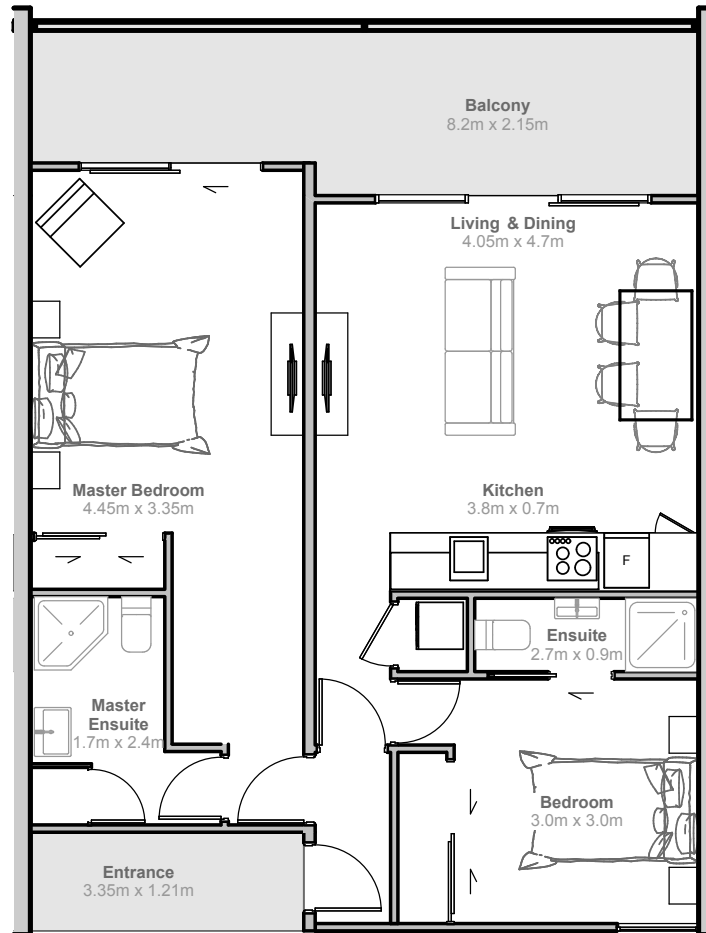


SOHO

CHRISTCHURCH

118 SALISBURY STREET



A201 - A206 LEVEL 2 TWO BEDROOM APARTMENT

2 BEDROOMS
2 BATHROOMS
1 PARKING SPACE
PRIVATE OUTDOOR COURTYARD

INTERIOR	73	SQM
BALCONY	17	SQM
ENTRY	4	SQM
PARKING SPACE	12.5	SQM
TOTAL	106.5	SQM

