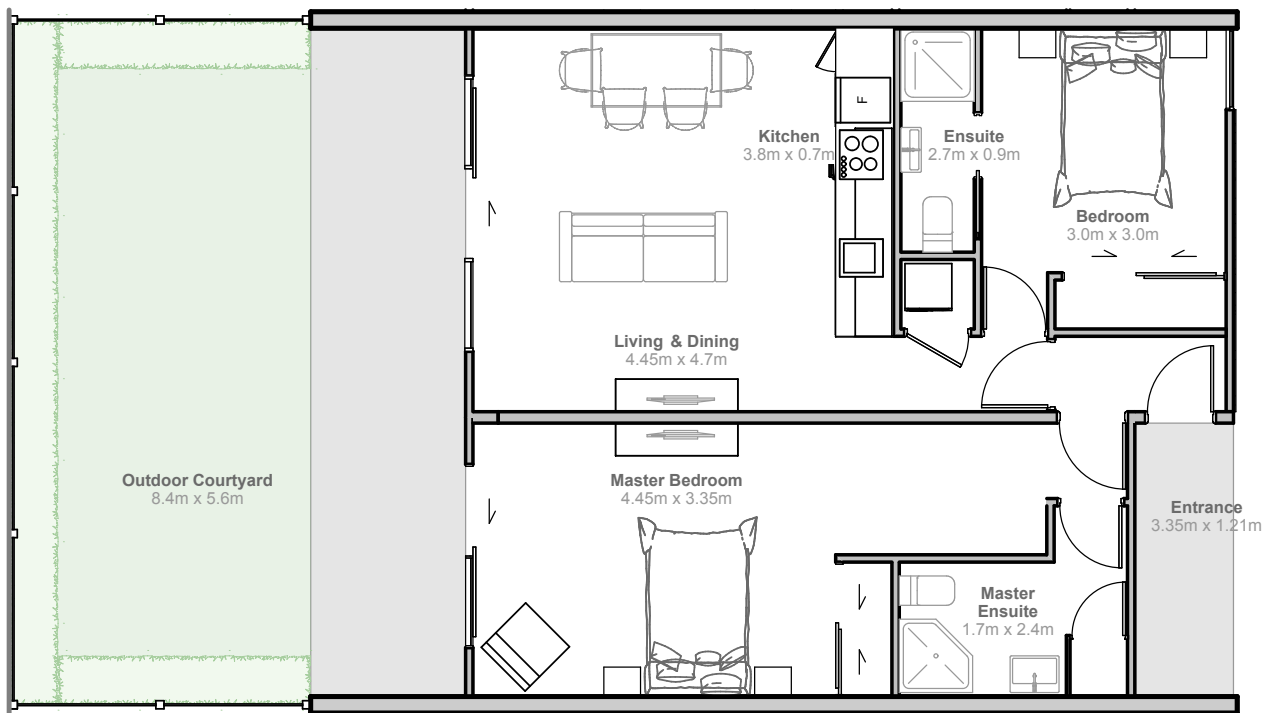


SOHO

CHRISTCHURCH

118 SALISBURY STREET



A108 - A110 GROUND FLOOR TWO BEDROOM APARTMENT

2 BEDROOMS
2 BATHROOMS
1 PARKING SPACE
PRIVATE OUTDOOR COURTYARD

INTERIOR	75	SQM
OUTDOOR COURTYARD	47	SQM
ENTRY	4	SQM
PARKING SPACE	12.5	SQM
TOTAL	138.5	SQM

