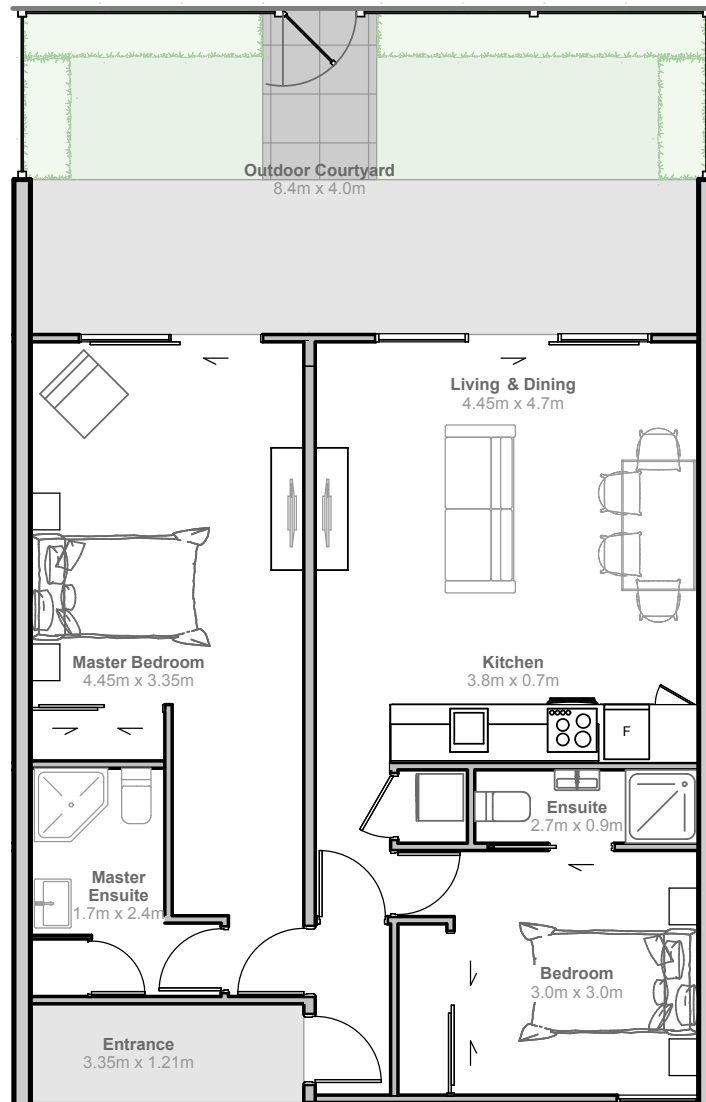


# SOHO

CHRISTCHURCH

118 SALISBURY STREET



## A101 - A106 GROUND FLOOR TWO BEDROOM APARTMENT

2 BEDROOMS  
2 BATHROOMS  
1 PARKING SPACE  
PRIVATE OUTDOOR COURTYARD

INTERIOR	75	SQM
OUTDOOR COURTYARD	34	SQM
ENTRY	4	SQM
PARKING SPACE	12.5	SQM
TOTAL	125.5	SQM

