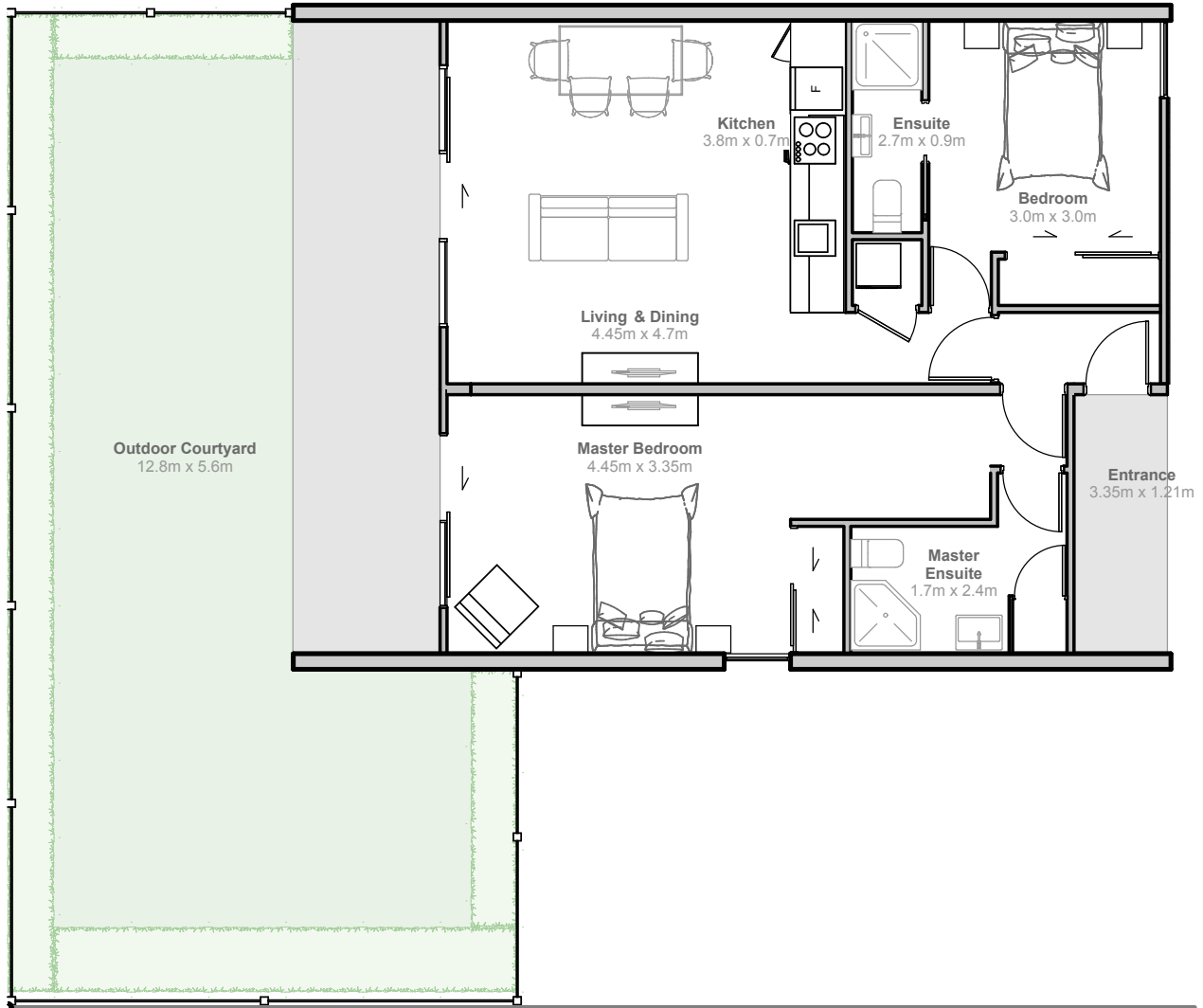


SOHO

CHRISTCHURCH
118 SALISBURY STREET



A111 GROUND FLOOR CORNER TWO BEDROOM APARTMENT

2 BEDROOMS
2 BATHROOMS
1 PARKING SPACE
PRIVATE OUTDOOR COURTYARD

INTERIOR	75	SQM
OUTDOOR COURTYARD	76	SQM
ENTRY	4	SQM
PARKING SPACE	12.5	SQM
TOTAL	167.5	SQM

