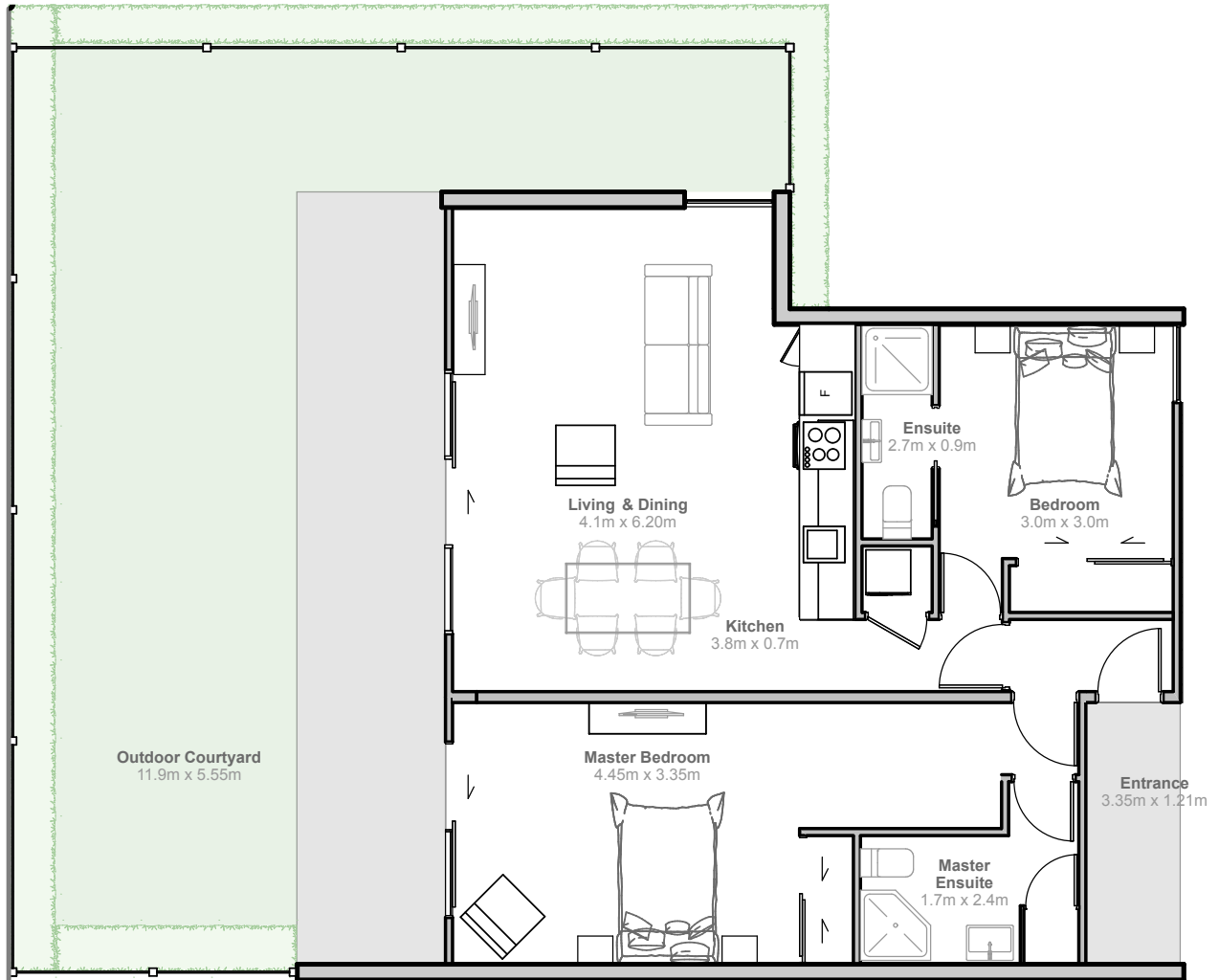


SOHO

CHRISTCHURCH

118 SALISBURY STREET



A107 GROUND FLOOR CORNER TWO BEDROOM APARTMENT

2 BEDROOMS
2 BATHROOMS
1 PARKING SPACE
PRIVATE OUTDOOR COURTYARD

INTERIOR	82	SQM
OUTDOOR COURTYARD	75	SQM
ENTRY	4	SQM
PARKING SPACE	12.5	SQM
TOTAL	173.5	SQM

