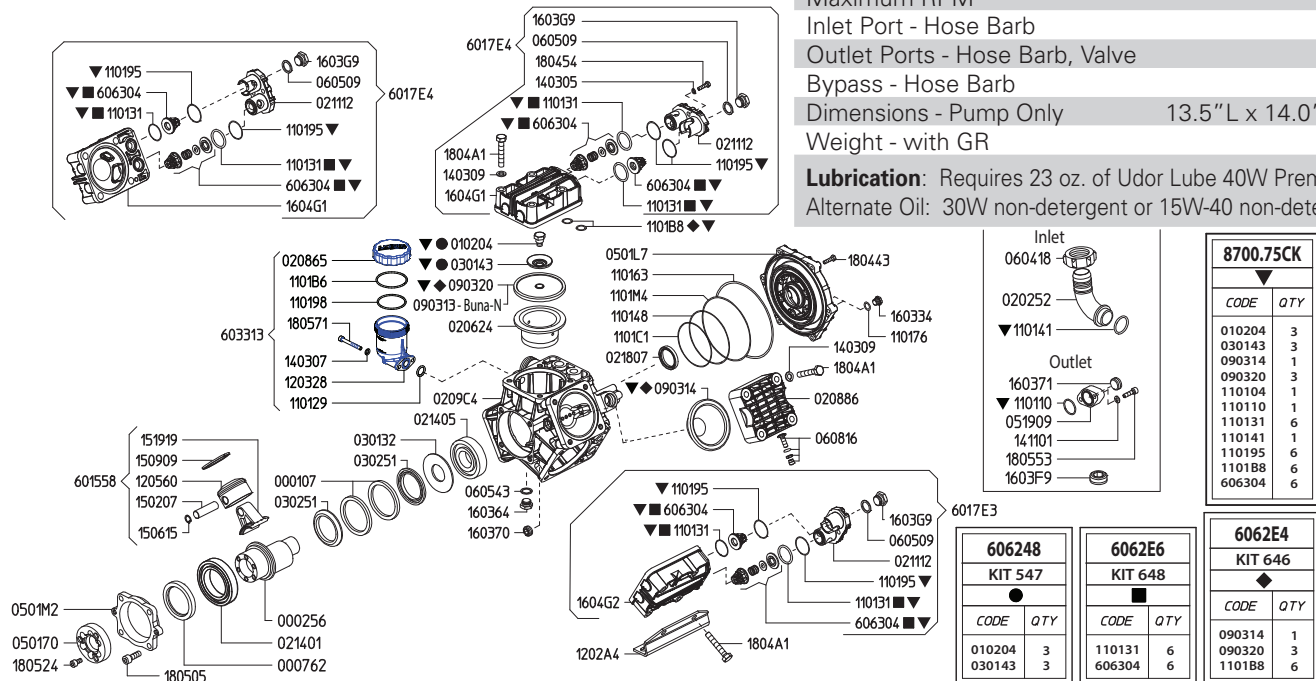


Maximum Flow	20.0 GPM / 79 lpm
Maximum Pressure	560 PSI / 38 bar
Maximum RPM	540
Inlet Port - Hose Barb	1-1/4" HB
Outlet Ports - Hose Barb, Valve	(2) 1/2" HB
Bypass - Hose Barb	3/4" HB
Dimensions - Pump Only	13.5" L x 14.0" W x 12.0" H
Weight - with GR	58 lbs

**Lubrication:** Requires 23 oz. of Udor Lube 40W Premium Pump Oil.  
Alternate Oil: 30W non-detergent or 15W-40 non-detergent oil.



8700.75CK	
CODE	QTY
010204	3
030143	3
090314	1
090320	3
110104	1
110110	1
110131	6
110195	6
110188	6
606304	6

606248 KIT 547	
CODE	QTY
010204	3
030143	3

6062E6 KIT 648	
CODE	QTY
110131	6
606304	6

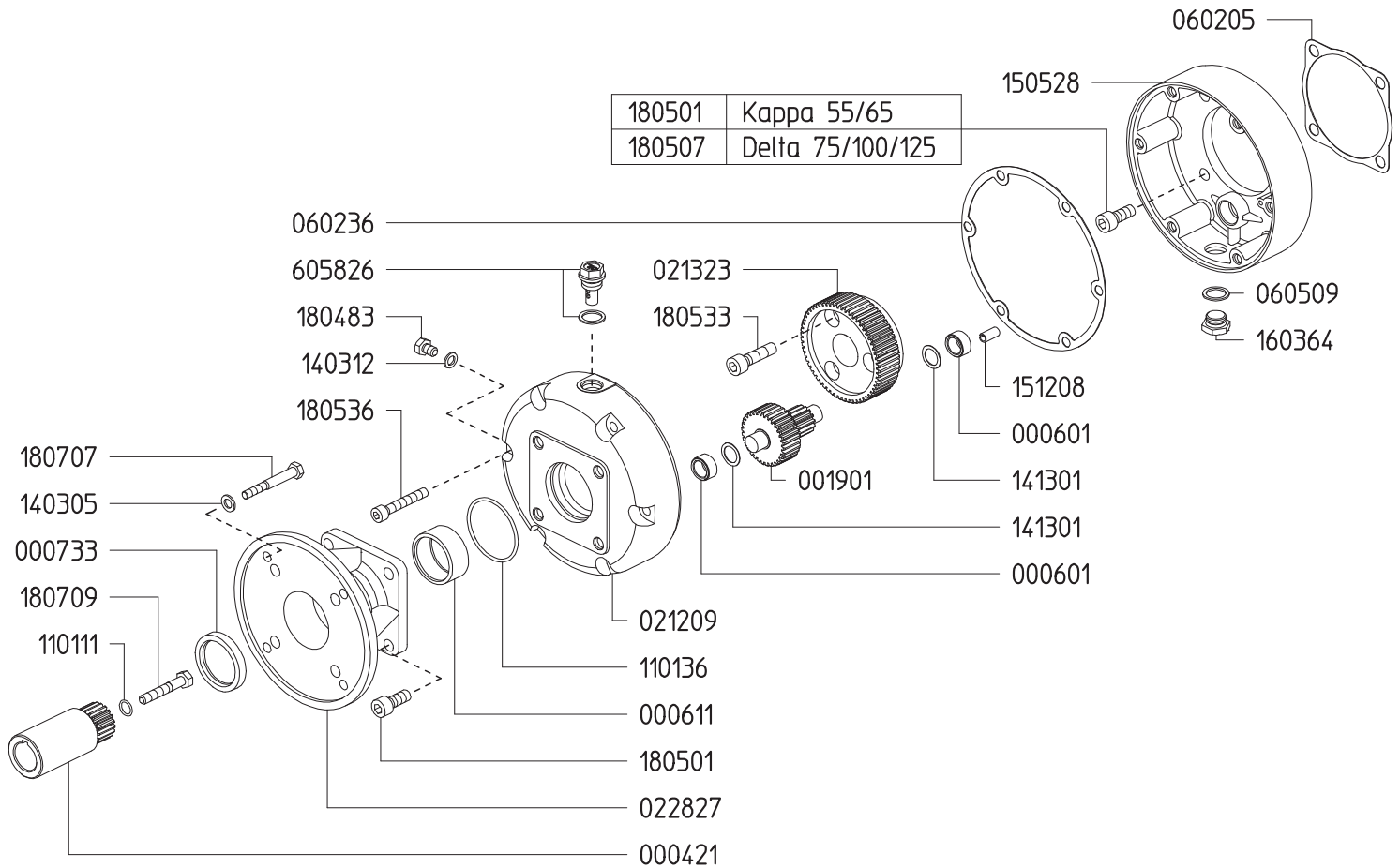
6062E4 KIT 646	
CODE	QTY
090314	1
090320	3
110188	6

Revised 5-4-2021

Part #	Description	Qty	Part #	Description	Qty
0001.07	RETAINER RING	2	1101.M4	O-RING - CRANKCASE FLANGE	1
0002.56	SHAFT - VA	1	1202.A4	BASE PLATE	2
0007.62	OIL SEAL D60	1	1203.28	OIL RESERVOIR	1
0102.04	DIAPHRAGM BOLT ●▼	3	1205.60	ALUMINIUM PISTON D60	3
0202.52	HOSE BARB D32	1	1403.05	WASHER M8	2
0206.24	SLEEVE D60	3	1403.07	WASHER M6	2
0208.86	ACCUMULATOR COVER	1	1403.09	WASHER M10	16
0208.65	OIL RESERVOIR COVER	1	1411.01	SERATED WASHER D6	2
0209.C4	CRANKCASE	1	1502.07	PIN D15X54	3
0211.12	VALVE COVER	3	1506.15	SNAP RING D15	3
0214.01	BALL BEARING D60	1	1509.09	PISTON RING D60	3
0214.05	BALL BEARING D35	1	1519.19	CONNECTING ROD	3
0218.07	CAP D47X7	1	1603.36	PLUG G3/4	2
0301.32	BEARING DISC	1	1603.64	PLUG G3/8	1
0301.43	DIAPHRAGM DISC ●▼	3	1603.70	PLUG G3/8	1
0302.51	ROD SPACER	2	1603.71	PLUG G1/2	1
0501.70	FLANGE - VA	1	1603.F9	PLUG G3/4	1
0501.L7	CRANKCASE FLANGE	1	1603.G9	HEAD PLUG 3/8	3
0501.M2	BEARING FLANGE- VA	1	1604.G1	RIGHT/TOP HEAD	2
0519.09	REMOTE CONTROL FLANGE G1/2	1	1604.G2	LEFT HEAD	1
0604.18	BARB NUT M42X2	1	1804.43	HEX BOLT M6X35	6
0605.09	GASKET D17	3	1804.54	HEX BOLT M8X35	6
0605.43	GASKET D17	1	1804.A1	HEX BOLT M10X70	16
0608.16	AIR VALVE ASSEMBLY	1	1805.05	ALLEN BOLT M10X30	4
0903.13	PISTON DIAPHRAGM D100 BUNA-N	3	1805.24	ALLEN BOLT M8X16	6
0903.14	ACCUMULATOR DIAPHRAGM ◆▼	1	1805.71	ALLEN BOLT M6X50	2
0903.20	PISTON DIAPHRAGM D100 GREENTECH ◆▼	3	1805.53	ALLEN BOLT M6X22	2
1101.10	O-RING - DISCHARGE PORT ▼	1	6015.58	ROD ASSEMBLY D60	3
1101.29	O-RING - OIL RESERVOIR	1	6017.E3	HEAD ASSEMBLY - LEFT	1
1101.31	O-RING - VALVE ■▼	6	6017.E4	HEAD ASSEMBLY - RIGHT/TOP	2
1101.41	O-RING - INLET HOSE BARB ▼	1	6033.13	OIL RESERVOIR ASSEMBLY	1
1101.48	O-RING - CRANKCASE FLANGE	1	6063.04	VALVE ASSEMBLY W/O O-RING ■▼	6
1101.63	O-RING - CRANKCASE FLANGE	1	6062.48	DIAPHRAGM BOLT/WASHER KIT (KIT547)	1
1101.76	O-RING - PLUG	2	6062.E4	DIAPHRAGM KIT GREENTECH (KIT 646)	1
1101.95	O-RING - VALVE COVER ▼	6	6062.E6	IN/OUTLET VALVE KIT (KIT 648)	1
1101.98	O-RING - OIL RESERVOIR	1	8700.75CK	COMPLETE REPAIR KIT	1
1101.B6	O-RING - OIL RESERVOIR	1			
1101.B8	O-RING - HEAD ◆▼	6			
1101.C1	O-RING - CRANKCASE FLANGE	1			

- Parts in 6062.48 (Kit 547)
- ◆ Parts in 6062.E4 (Kit 646)
- Parts in 6062.E6 (Kit 648)
- ▼ Parts in 8700.75CK (Complete Repair Kit)

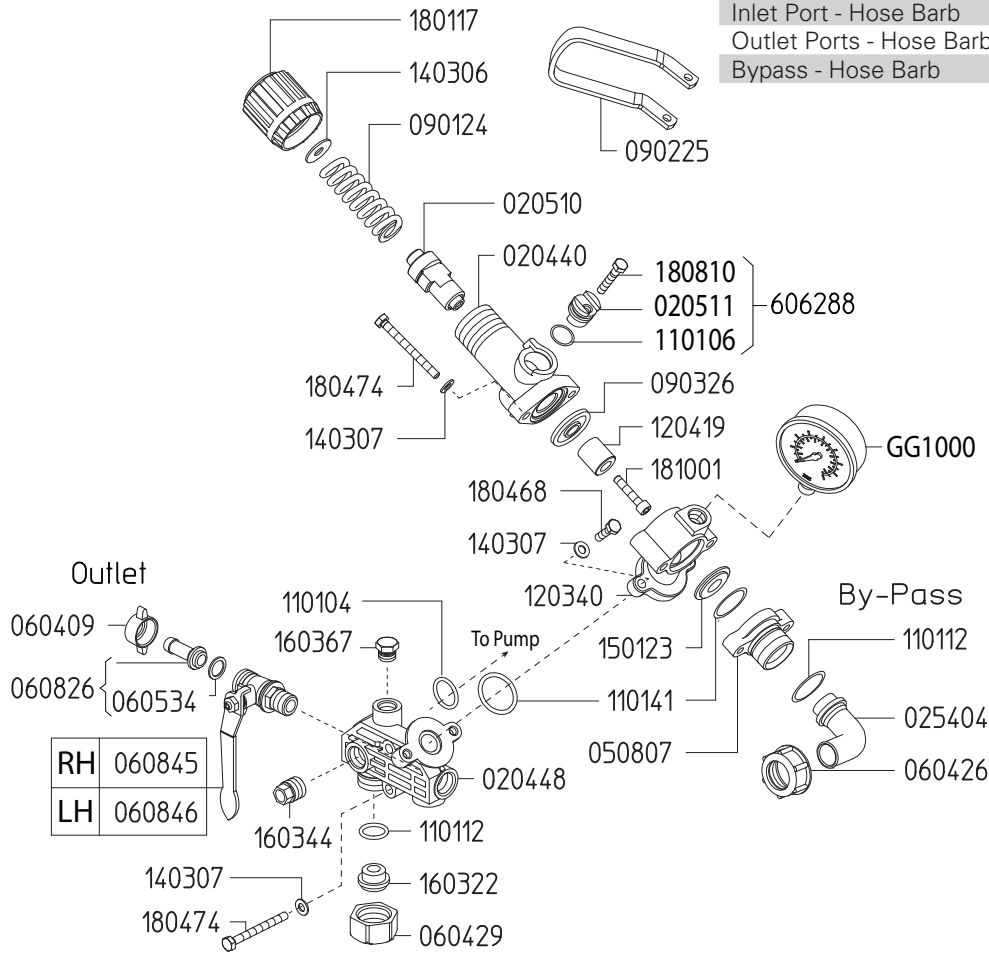
**GAS ENGINE GEAR REDUCTION FOR  
KAPPA-55/75, DELTA-75, ZETA-120 DIAPHRAGM PUMPS  
on GAS ENGINES with 1" SHAFTS  
REQUIRES 17.25 OZ. 90W GEAR LUBE**



Part #	Description	Qty	Part #	Description	Qty
0004.21	GEAR SHAFT "M164-1" "	1	1413.01	WASHER D15	2
0006.01	BUSHING D15	2	1505.28	GEAR BODY "M164"	1
0006.11	BUSHING D40	1	1512.08	PLUG D4X16 UNI1707	1
0007.33	OIL SEAL D40	1	1603.64	PLUG G3/8	1
0019.01	GEAR SHAFT "M164"	1	1804.83	HEX BOLT M8X12 UNI5739	1
0212.09	REDUCER COVER "M164"	1	1805.01	ALLEN BOLT M10X25 UNI5931	4
0213.23	RED. GEAR WHEEL Z=60 "M164"	1	1805.01	ALLEN BOLT M10X25 UNI5931 "KAPPA"	4
0228.27	COUPLER "M164-VA"	1	1805.07	ALLEN BOLT M10X40 UNI5931 "DELTA"	4
0602.05	GASKET	1	1805.12	ALLEN BOLT M10X50 UNI5931	1
0602.36	GASKET "M164"	1	1805.33	ALLEN BOLT M10X35 UNI5931	3
0605.09	GASKET D17	1	1805.36	ALLEN BOLT M8X50 UNI5931	6
1101.11	O-RING D11.11 (RIF.114)	1	1807.07	HEX BOLT 5/16X1" UNF	4
1101.36	O-RING D53.65 (RIF.3212)	1	1807.09	HEX BOLT 5/16X2-1/4" UNF	1
1403.05	WASHER D8.4	4	6058.26	OIL PLUG G3/8	1
1403.12	GASKET D8.5	1			

# 6047.06 CONTROL UNIT

Maximum Flow	27.0 GPM / 102 lpm
Maximum Pressure	560 PSI / 38 bar
Inlet Port - Hose Barb	-
Outlet Ports - Hose Barb, Valve	(2) 1/2" HB
Bypass - Hose Barb	3/4" HB



Revised 5-3-2021

Part #	Description	Qty
0202.25	BYPASS HOSE BARB - STRAIGHT (OPTIONAL)	1
0204.40	VALVE BODY	1
0204.48	MAIN BODY	1
0205.10	VALVE CYLINDER	1
0205.11	VALVE CYLINDER CAM	2
0254.04	BYPASS HOSE BARB - ELBOW	1
0508.07	BYPASS FLANGE	1
0604.09	DISCHARGE BARB NUT	2
0604.26	BYPASS BARB NUT	1
0604.29	BARB NUT	1
0605.34	GASKET	2
0608.26	1/2" HOSE BARB W/GASKET	2
0608.45	BALL VALVE; RIGHT	1
0608.46	BALL VALVE; LEFT	1
0901.24	SPRING (HIGH PRESSURE)	1
0902.25	DUMP VALVE LEVER	1
0903.26	DIAPHRAGM ●	1
1101.04	O-RING ●	1
1101.06	O-RING	2
1101.12	O-RING	1

Part #	Description	Qty
1101.41	O-RING ●	2
1203.40	ADAPTER FLANGE	1
1204.19	STEEL POPPET ●	1
1403.06	WASHER	1
1403.07	WASHER	6
1501.23	SEAT ●	1
1603.02	PLUG	2
1603.14	PLUG	1
1603.22	PLUG	1
1801.17	ADJUSTMENT KNOB	1
1804.68	BOLT	2
1804.74	BOLT	4
1808.10	BOLT	2
1810.01	STAINLESS STEEL BOLT ●	1
6062.88	REGULATOR CAM KIT	2
8701.02	REPAIR KIT FOR 6047.06 CONTROL UNIT	
GG1000	PRESSURE GAUGE - 1000 PSI BOTTOM MOUNT	1

● Parts included in Repair Kit #8701.02

The control unit features a manual dump valve, pressure control knob, glycerine filled pressure gauge, and two ball valve discharge ports.

1. Before operating or re-operating pump, push the manual dump valve lever (0902.25) down so the pump will start at zero pressure. FAILURE TO DO SO WILL VOID PUMP WARRANTY.
2. Turn pressure adjusting knob (1801.17) counter-clockwise to relieve spring tension. NOTE: Step 2 applies only to initial start-up, and is not necessary in daily operation of pump.
3. Start unit and let run until air is evacuated from system, when only liquid is expelled from the by-pass line.
4. Return dump valve lever to the UP position. Open spray gun or spray boom and turn the pressure adjustment knob (1801.17) clockwise until desired operating pressure is achieved.

# DELTA 75 DIMENSIONS

All Dimensions are WITHOUT Control Unit or Regulator

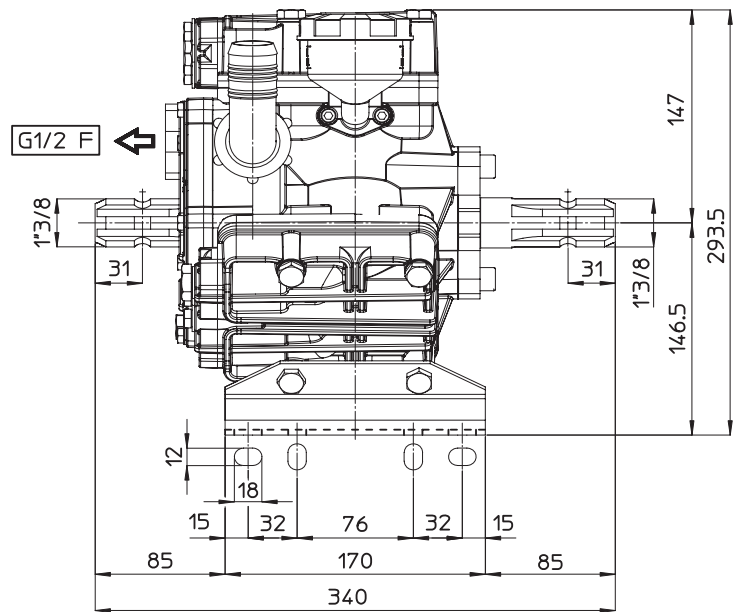
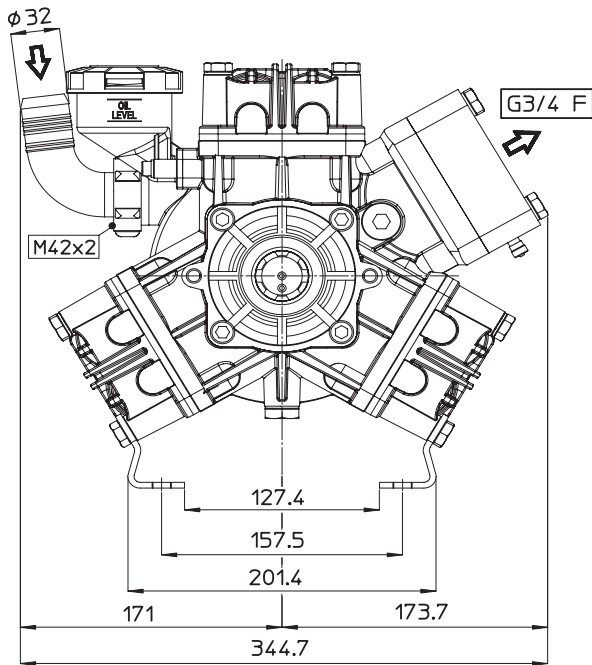
Dimensional Drawings are Shown in Millimeters. To Convert to Inches, Multiply Dimension x 0.03937

## Specifications

## DELTA 75

Inlet Port - Hose Barb	1-1/4" HB
Outlet Ports - Hose Barb	(2) 1/2" HB
Bypass - Hose Barb	3/4" HB
Dimensions	13.5" L x 14.0" W x 12.0" H
Diaphragm Material	GREENTECH (Std) Buna-N (Opt)

**Lubrication:** Requires 23 oz. of Udor Lube 40W Premium Pump Oil. Alternate Oil: 30W non-detergent or 15W-40 non-detergent oil.



## TORQUE SPECS

Ref.	Description	Ft./lb.	Nm
1	Diaphragm Bolts (Use Loctite 243)	18	25
2	Head Bolts	30	40
3	Pulsation Dampener Bolts	20	28
4	Inlet Flange Bolts	7	10
5	Bearing Flange Bolts	25	34
6	Oil Cup Bolts	6	8
7	Valve Cover Bolts	18	25

