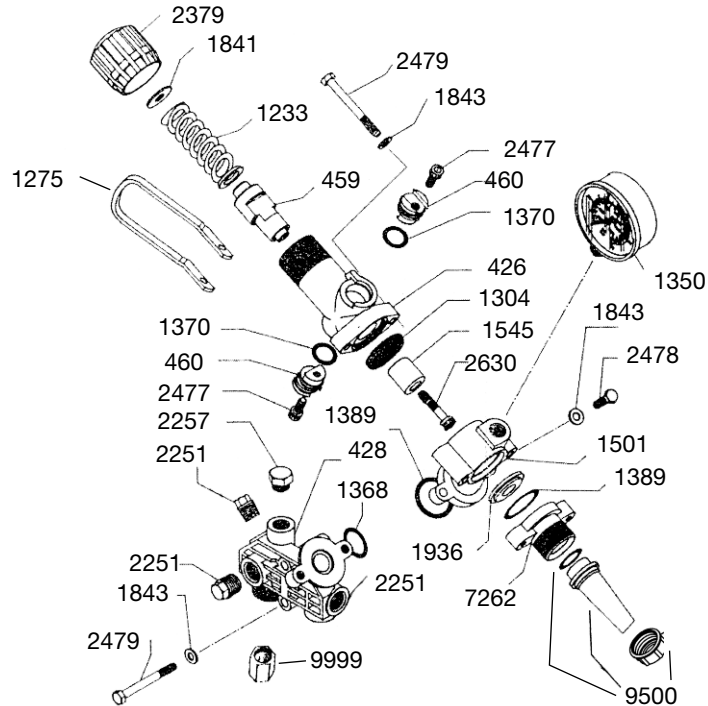




6047.06-IND CONTROL UNIT

Operating Instructions / Parts List



| REF# | PART# | DESCRIPTION | QTY | REF# | PART# | DESCRIPTION | QTY |
|-------|---------|--------------------|-----|-------|---------|------------------------|-----|
| 426 | 0204.40 | Valve Body | 1 | 1841 | 1403.06 | Washer | 1 |
| 428 | 0204.48 | Main Body | 1 | 1843 | 1403.07 | Washer | 6 |
| 459 | 0205.10 | Valve Cylinder | 1 | *1936 | 1501.23 | Seat | 1 |
| 460 | 0205.11 | Valve Cylinder Cam | 2 | 2251 | 1603.02 | Plug | 4 |
| 1233 | 0901.24 | Spring | 1 | 2257 | 1603.14 | Plug | 1 |
| 1275 | 0902.25 | Dump Valve Lever | 1 | 2379 | 1801.17 | Adjustment Knob | 1 |
| *1304 | 0903.26 | Diaphragm | 1 | 2477 | 1808.10 | Bolt | 2 |
| 1350 | GG-1000 | Gauge | 1 | 2478 | 1804.68 | Bolt | 2 |
| *1368 | 1101.04 | O-Ring | 1 | 2479 | 1804.74 | Bolt | 4 |
| *1370 | 1101.06 | O-Ring | 2 | *2630 | 1810.01 | S.S. Bolt | 1 |
| 1374 | 1101.12 | O-Ring | 1 | 7262 | 0508.07 | Bypass Flange | 1 |
| *1389 | 1101.41 | O-Ring | 2 | 9500 | 1291.B9 | 3/4" Steel Bypass Barb | 1 |
| 1501 | 1203.40 | Adapter Flange | 1 | 9999 | 207P-12 | 3/4" FNPT Outlet Port | 1 |
| *1545 | 1204.19 | Poppet (Steel) | 1 | | | | |

*Parts included in repair kit 8701.02

*NOTE: 8701.02 is the only repair kit to be used in Control Unit 6047.06. IND

The control unit has a manual dump valve, pressure control knob, glycerin-filled pressure gauge and one 3/4"FNPT discharge port.

1. Before operating or re-operating pump, push the manual dump valve lever (Ref. #1275) down so the pump will start at zero pressure. **FAILURE TO DO SO WILL VOID THE PUMP WARRANTY.**
2. Turn pressure adjustment knob (Ref. #2379) counter clockwise to relieve spring tension. NOTE: Step 2 applies only to initial start-up, and is not necessary in daily operation of pump.
3. Start unit and let run until air is evacuated from the system, when only liquid is expelled from the bypass line.
4. Return dump valve lever (Ref. #1275) to the UP position. Open spray gun and turn the pressure adjustment knob (Ref. #2379) clockwise until desired operating pressure is achieved.

UDOR U.S.A., INC.
500 Apollo Drive
Lino Lakes, MN 55014

TEL. (651) 785-0666
FAX (800) 732-2670
www.udorusa.com

*NOTE: Protect pump from freezing. If freezing conditions exist, flush pump with a 50/50 mixture of anti-freeze and water.