

## Options

### Multi Cording Device 2

Tajima's original Multi Cording Device 2 allows you to sew six kinds of cord.



### Seed Beads Device

By automating beads embroidery which was previously performed manually by craftsmen, mass production has been realized.



### Sequin Device IV

Embroidering various sequins: small-diameter sequins, large-diameter sequins, irregular-shaped sequins and eccentric sequins



## Frames



▲Tubular Frame(Standard)  
(360mm x 500mm)



▲Cap Frame 2  
(75mm x 360mm)



▲Border Frame  
(360mm x 500mm)



▲Sock Frame  
(50mm x 30mm)



▲Air type Clamp Frame 2  
(80mm x 120mm  
110mm x 140mm  
140mm x 200mm)



▲Air type Pocket Frame 2  
(90mm x 30-258mm)



▲Pocket Frame  
(45mm x 80mm)



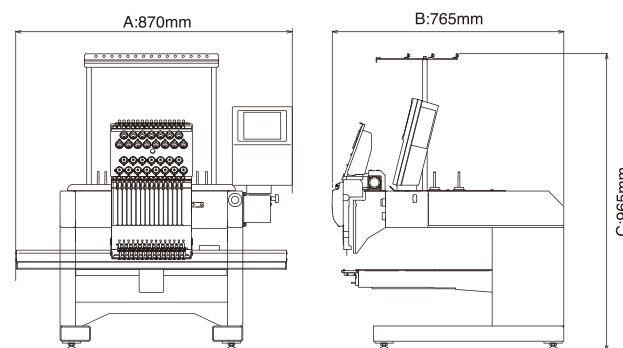
▲X-Extension Frame  
(360mm x 1200mm)



▲M-Frame

## Specifications

Needles	6, 12, 15
Factory options	Seed Beads Device, Sequin Device IV, Lochrose Embroidery Device, Signal Tower, Position Marker, LED Lamp, Air Type Clamp Frame 2, Air Type Pocket Frame 2
Options	Multi Cording Device 2, Emb. Lamé Attachment, Stand, Stand Tray, Border Frame, X-Extension Frame, Cap Frame 2, Pocket Frame, Snarl-preventive Attachment
Speed	Max. 1,200rpm
Electricity	Single-phase 100-120V, 200-240V, 50Hz/60Hz
Power consumption	160W
Weight	95kg



## Seller

### Tajima Industries Ltd.

19-22, Shirakabe 3-chome, Higashi-ku Nagoya 461-0011 JAPAN  
TEL. +81-52-932-3444, 3445 FAX. +81-52-932-2457, 3449



<http://www.tajima.com>



<https://www.facebook.com/TajimaGroup>

## Manufacturer

### TISM Co.,Ltd.

\*The practical embroidery space and the rotational speed vary depending on embroidery product, machine model, and operating conditions.  
\*No registered trademark or design of the products contained in this catalog may be used without prior permission.

1903D\_02

## Electronic Single-Head Automatic Embroidery Machine

# TMBR - SC SERIES



Fashioning your Future Tajima always leads, never follows

# TMBR-SC series

Electronic Single-Head Automatic Embroidery Machine

The next generation model with the Digitally Controlled Presser Foot "DCP"

As the DCP is attached you can also use the multi cord option.



The air clamp makes large sized bags easy to embroider.



It can also embroider on slim items like socks.



A wide area can be freely used all around the frame.

It can be easily installed for quick changeover with minimal down time.

As the frame screws have been changed the frames can be changed without using tools.

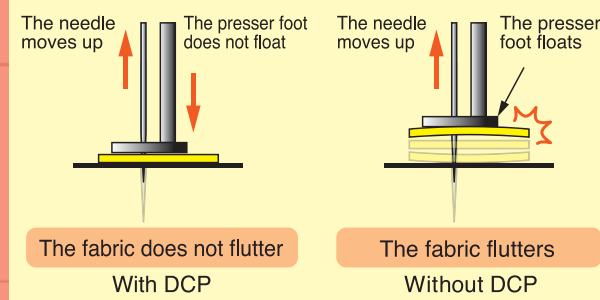


\* Mounted with options

## 1 What is the DCP?



The machine can embroider on thick material or seamed sections without fluttering due to Tajima's latest feature.



## When fluttering occurs

- ✗ The embroidery finish is lower quality
- ✗ Thread breakage or skip stitching occurs readily
- ✗ The needle is broken



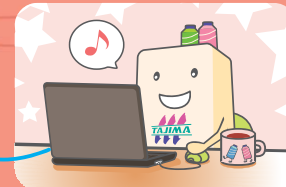
Leather Sewing

DCP is the abbreviation for the Digitally Controlled Presser Foot. Moving the "Presser Foot" to contact the material securely by motor control. As the lowest point of the Presser Foot can be easily set on the operation panel according to the thickness of the fabric, there are no concerns about presser foot damage. It is very efficient for 3D embroidery using urethane foam on caps.



## 2 Network

Embroidery data can be easily sent to the machines by connecting the embroidery software to a network.



For name tag embroidery, autograph is recommended as it simplifies the process. In addition to the DG/ML, it allows for the smoothest design data generation and transmission to the machine.



## 3 It can easily embroider on sleeves or pockets.

With the new type slim cylinder, it is easier to work on children's wear or smaller pockets.



## 4 Caps can be embroidered at higher speeds.

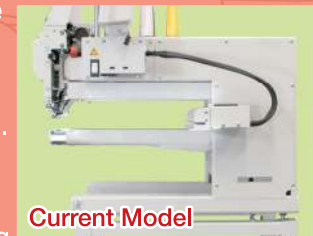
Cap production efficiency has been significantly increased.

- Existing machine 900rpm → 1000rpm

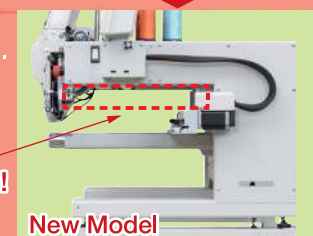


## 5 A streamlined Cubical Frame Design

Relocating the frame drive to the upper position widens the frame operating field. Embroider without worrying about the size of the item being embroidered or the embroidery position.



Current Model



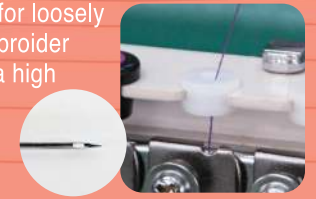
New Model

Wide area can be freely used!

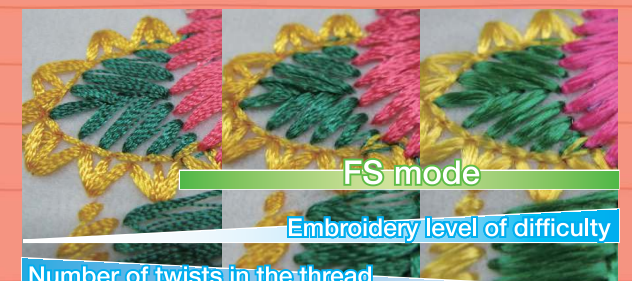
## 6 The FS mode is good for loosely twisted thread.



The FS mode is best suited for loosely twisted threads as it can embroider this type of fine thread with a high quality finish. By using the FS mode exclusive parts (sold separately) a nice lofty finish can be achieved.



FS mode Optional Parts



FS mode

Embroidery level of difficulty

Number of twists in the thread