



altwork™

**UPPER-LOWER MONITOR** mount

**Assembly Instructions**

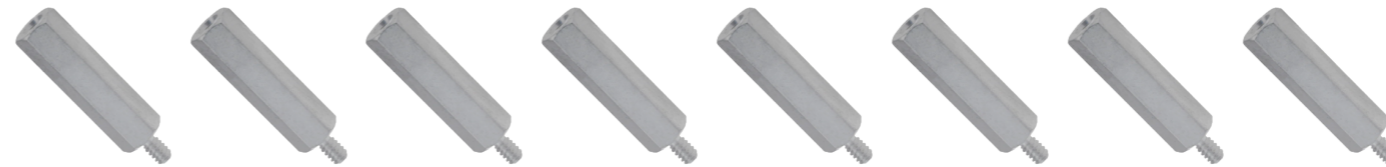
The new way to work

## Tools & Hardware

Upper-Lower Mount (1)



Stand-offs 14mm (8)



Thumb Screw (8)



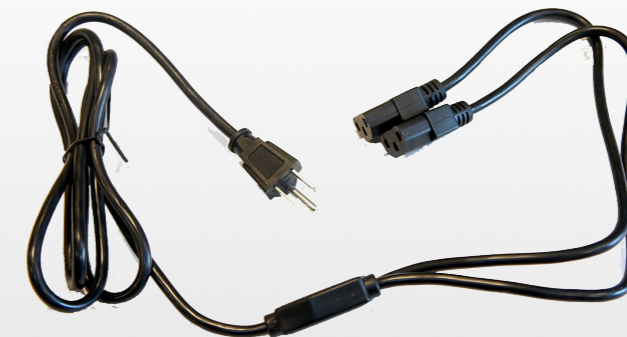
Stand-offs 30mm (8)



Philips Screw (5)



Dual Monitor Power Cord (1)



The new way to work

## Preparation



**STEP 1:** Place the monitor face down on a soft surface. Then place the monitor mount on top of the monitor, align the holes and ensure the bottom edge of the top monitor is in the middle of the mount.

If the monitors are different thicknesses or different sizes, it may be necessary to use the standoffs to space one or the other out farther from the mount in order to have the front of the screens come together at approximately the same place.



**STEP 2:** Use four thumb screws to attach the monitor to the mount.



Thumb Screws

The new way to work

## Attach The Vesa Mount



**STEP 3:** Attach the second monitor.



**STEP 4:** To check for levelness, stand the monitors up vertically and tip them towards yourself. Look to make sure the monitors line up with each other.



Thumb Screws

The new way to work

## Fix Alignment



**STEP 5:** If the monitors are not aligned, loosen the screws and shift the monitor mount to the right or left. Re-tighten screws and repeat step four until the monitors are aligned.

Tip: If the monitors are different thicknesses or different sizes, it may be necessary to use the standoffs to space one or the other out farther from the mount in order to have the front of the screens come together at approximately the same place.

The new way to work

## Install The Mount



**STEP 6:** Tip the monitor towards yourself again to check for levelness.



**STEP 7:** To install the monitor mount on the Altwork Station you'll need to align the monitor mount holes with the Altwork Station vesa plate and install four of the Phillips screws. Make sure the screws are tight.

Tip: It is best to have a second person hold the monitor mount while you place the screws.



Phillips Screws



UPPER-LOWER MONITOR mount

The new way to work

## Adjust Monitor



**STEP 8: IMPORTANT!** Make sure to adjust the monitor arm height up far enough that the bottom of the lower monitor does not hit the desk during recline (It is best to start by adjusting the monitor arm to its highest point, and only adjust it down after careful testing).

The new way to work

## Adjust The Monitor



**STEP 9:** Use the hex key to remove the cover on the monitor arm to adjust the friction of the monitor tilt joint.



**STEP 10:** Using the tools provided in the Altwork Station tool kit, tighten the bolt until the mount will stay at the desired angle and not sag under the additional weight of two monitors, then replace the cover.

Now route the cords and make sure all signal and power wires are placed in a way that they will not get pulled during any of the adjustments made to the Altwork Stations operation.



Hex Key





altwork™

Need help? Contact us  
[support@altwork.com](mailto:support@altwork.com)