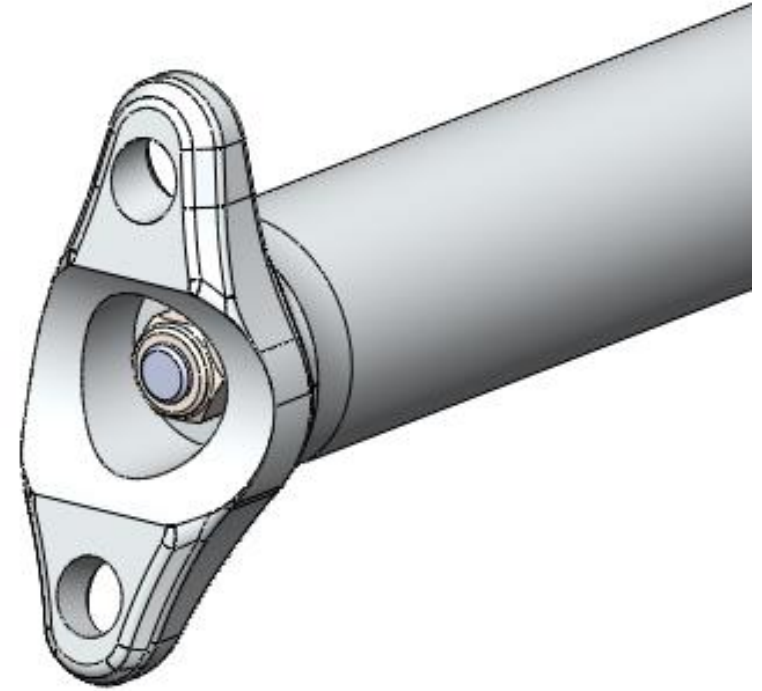
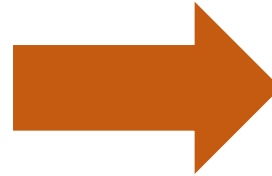
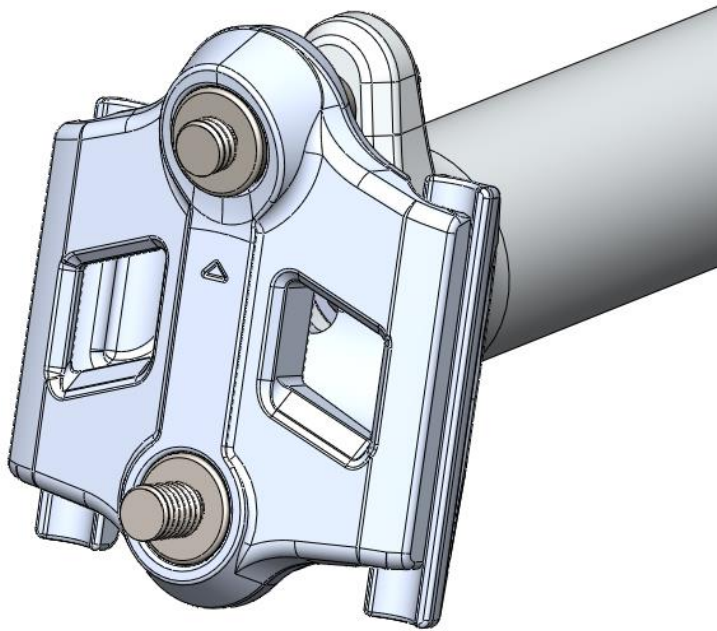




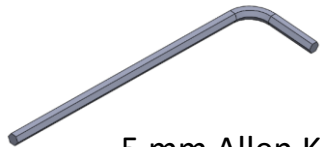
W H Y T E

Whyte drop.it II  
Cartridge replacement  
Dismantling  
Travel 125L ↓

Step 1

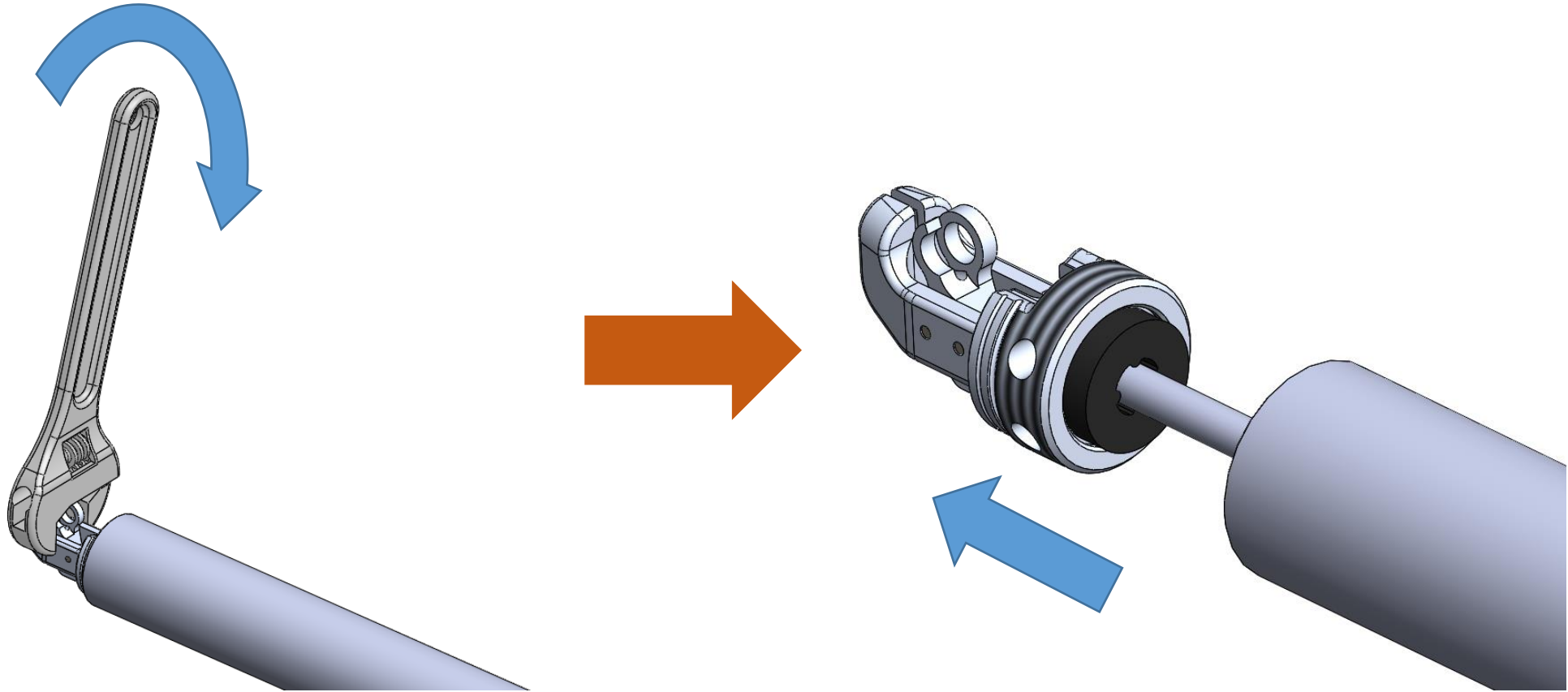


Tools:



5 mm Allen Key

Step 2



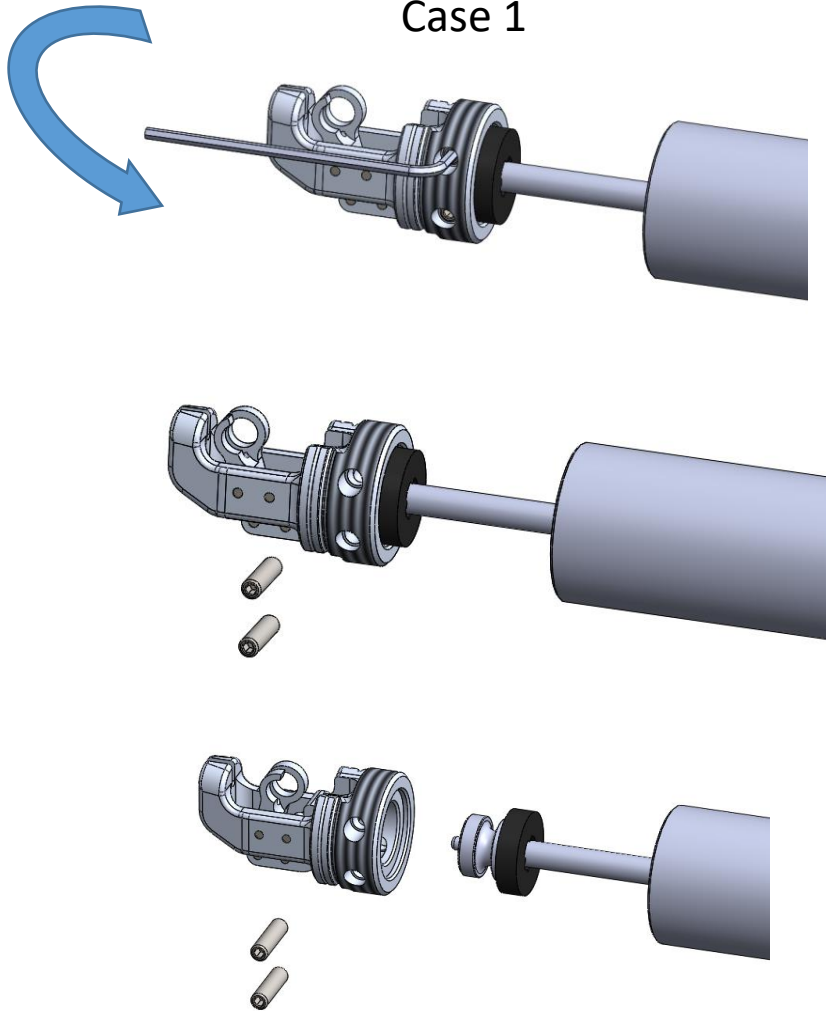
Tools:



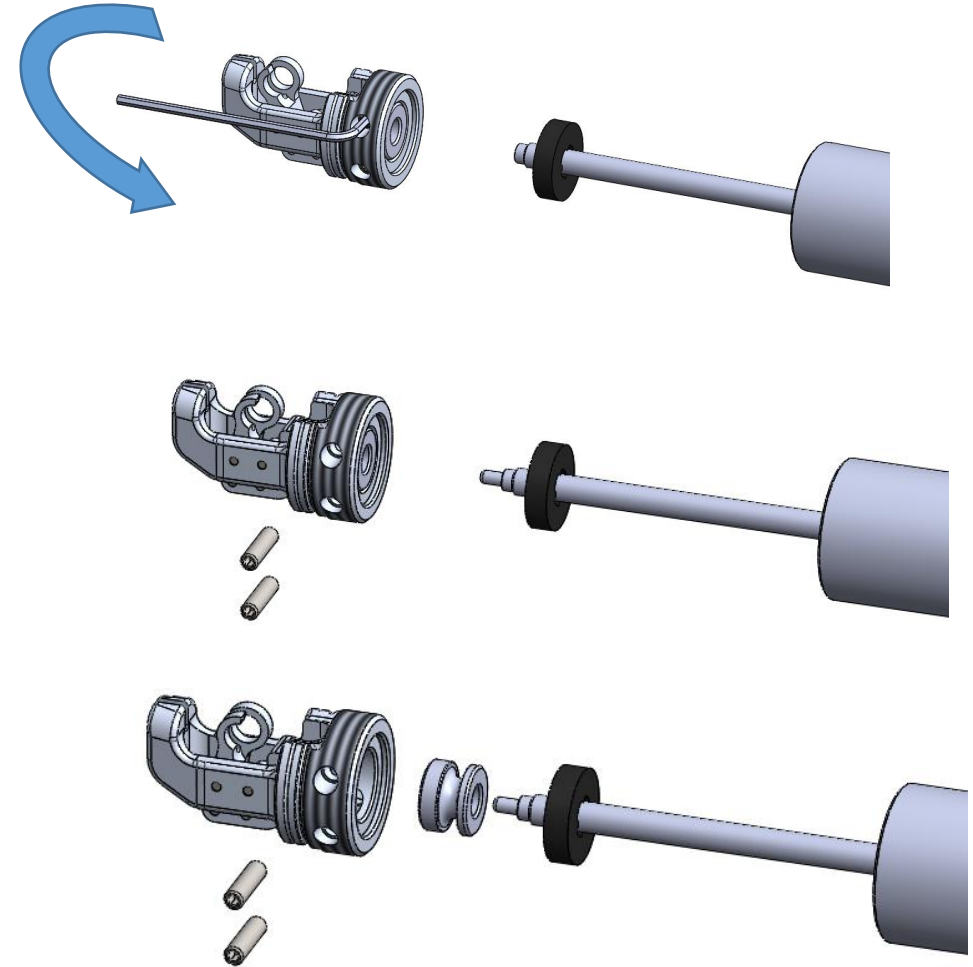
Wrench

# Step 3

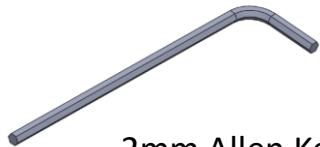
## Case 1



## Case 2

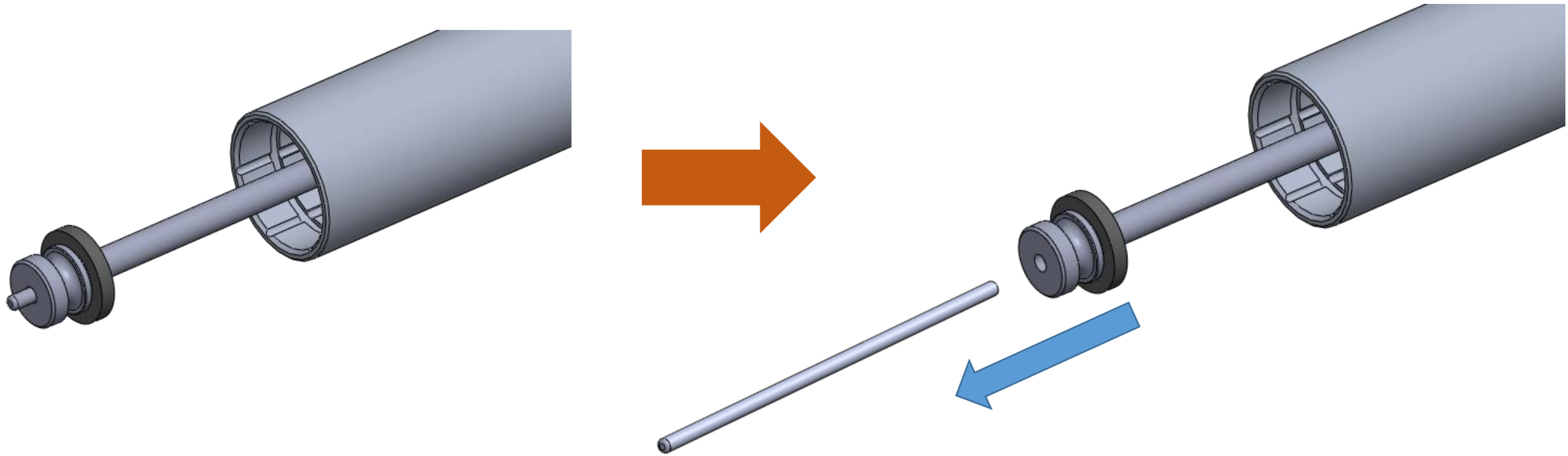


Tools:

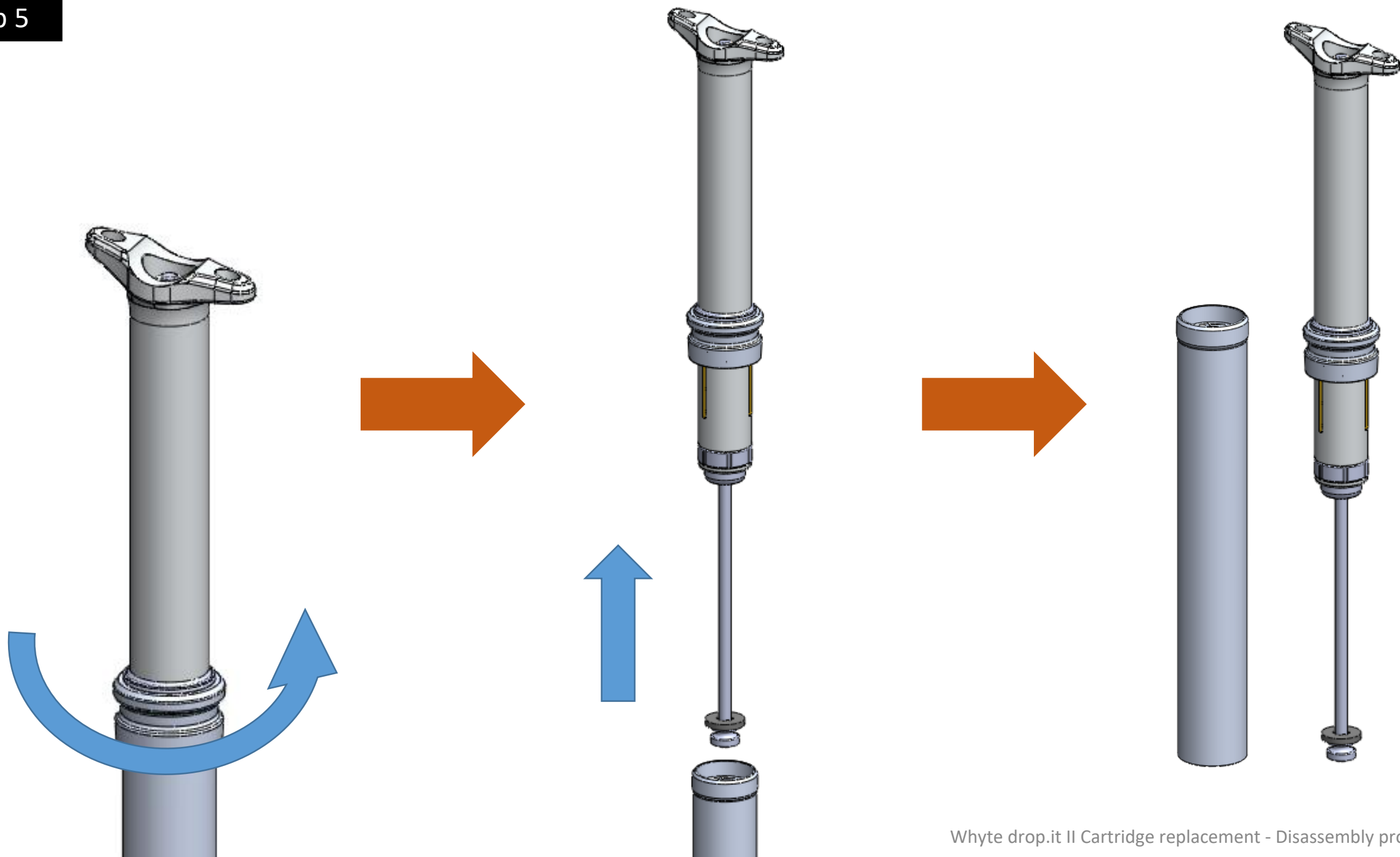


2mm Allen Key

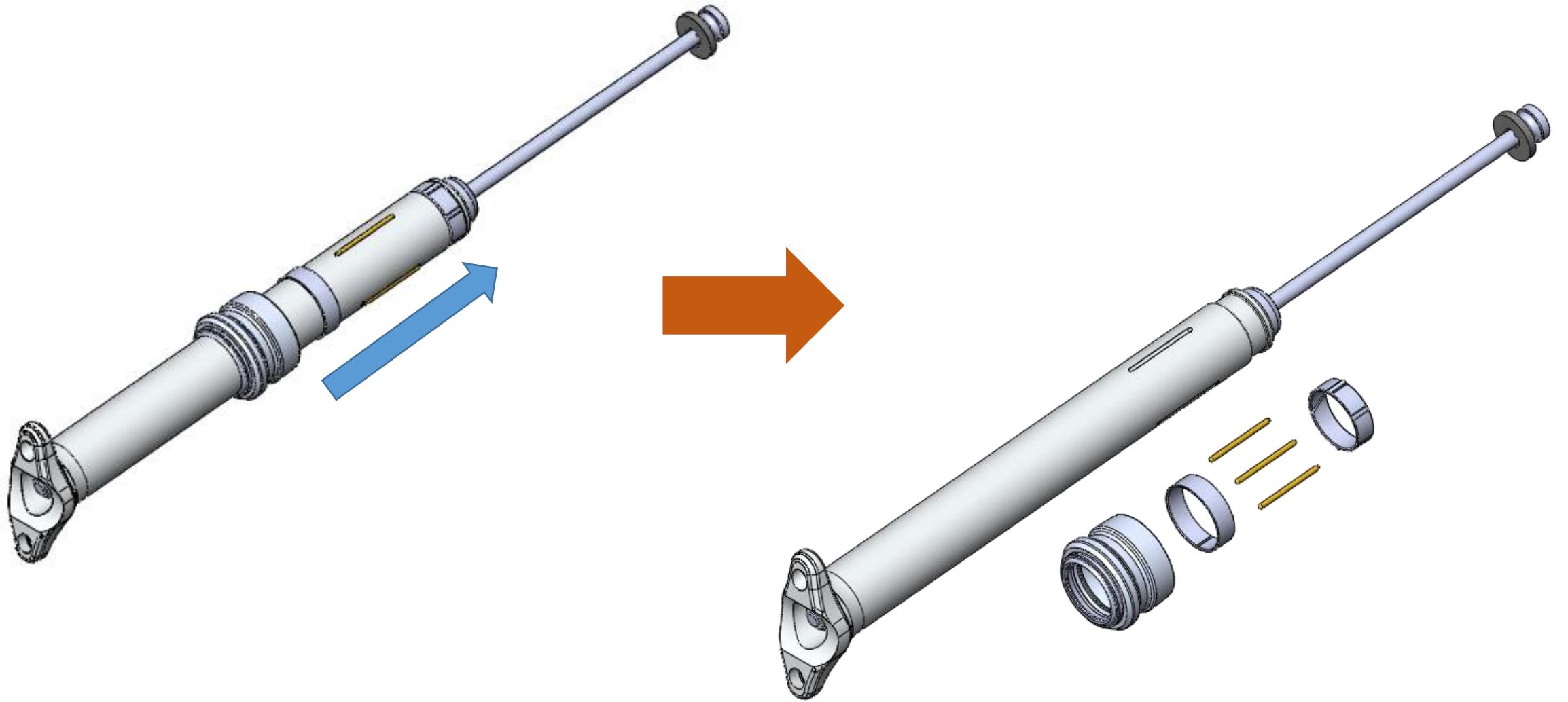
## Step 4



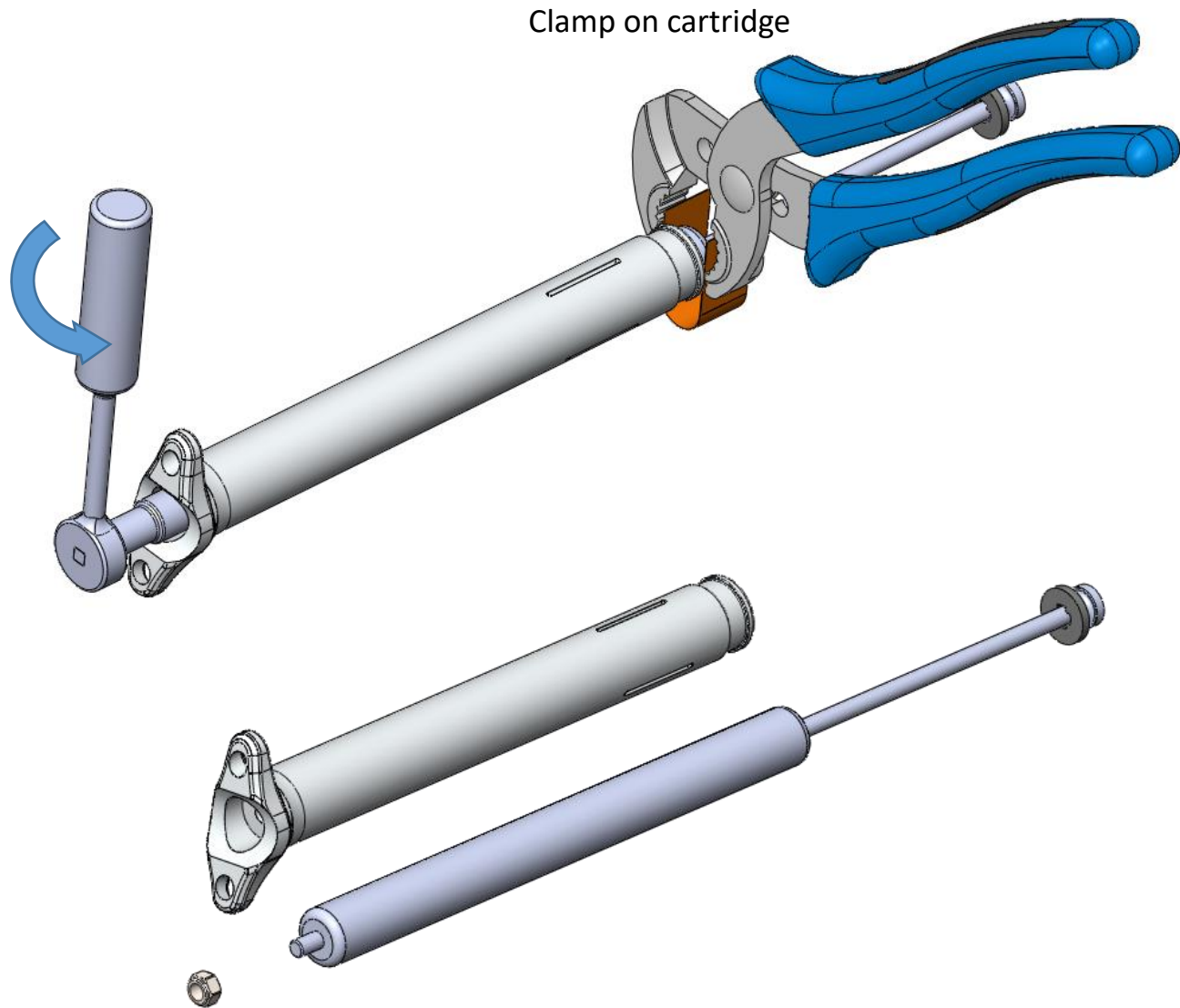
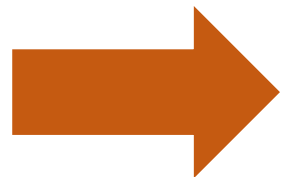
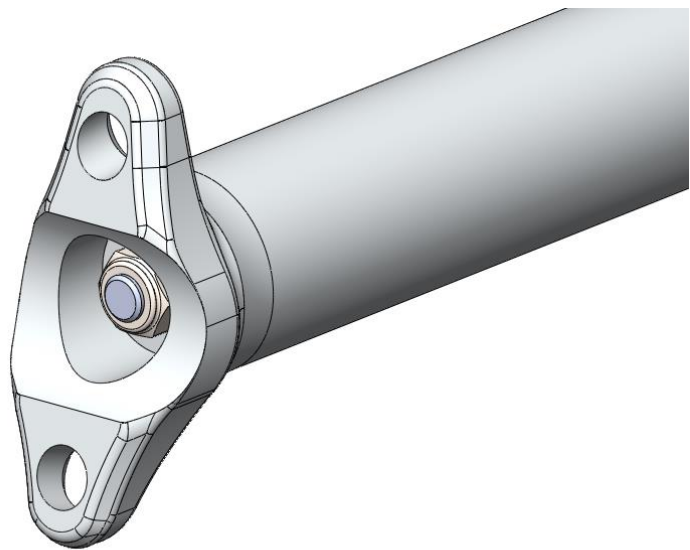
Step 5



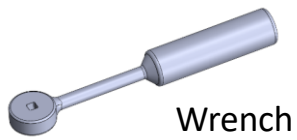
Step 6



Step 7



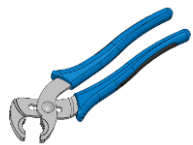
Tools:



Wrench



10mm Allen Key Socket



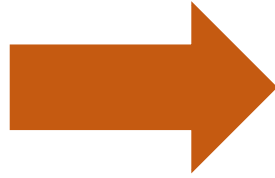
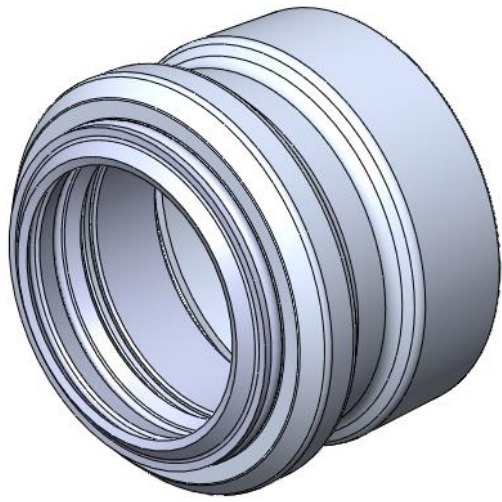
Plier



Cloth



## Step 8

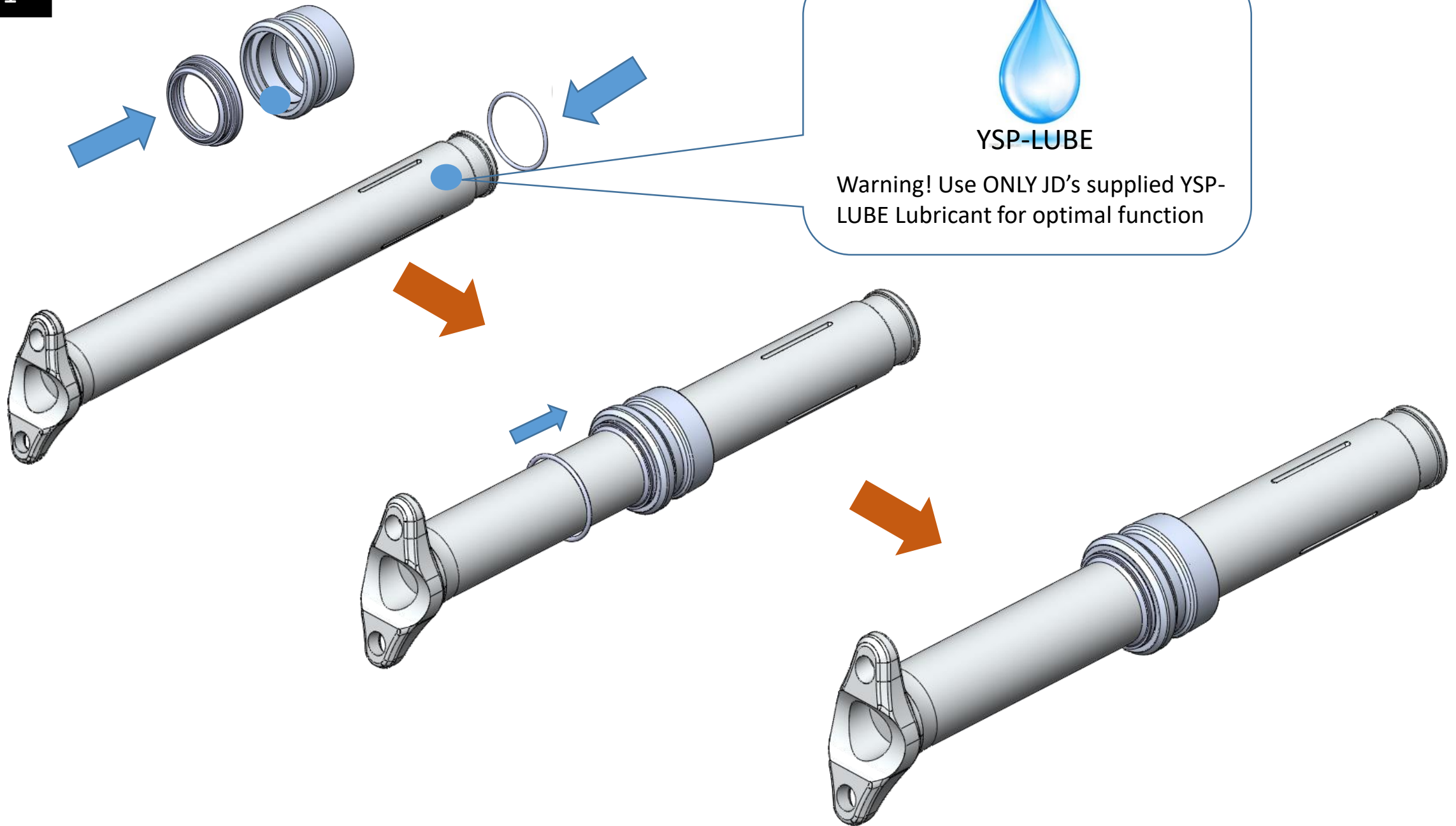




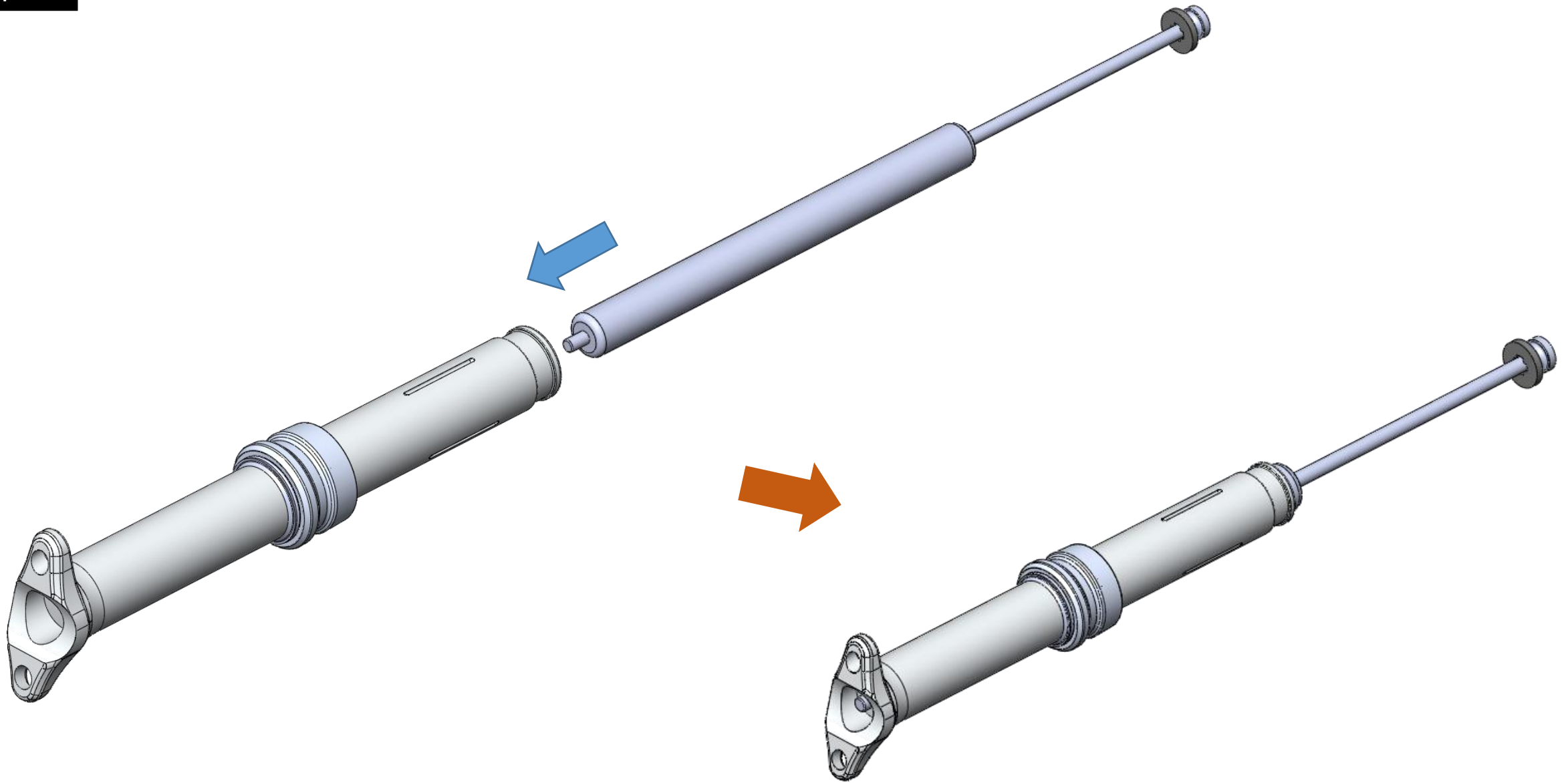
W H Y T E

Whyte drop.it ll  
Cartridge replacement  
Assembly  
Travel 125L ↓

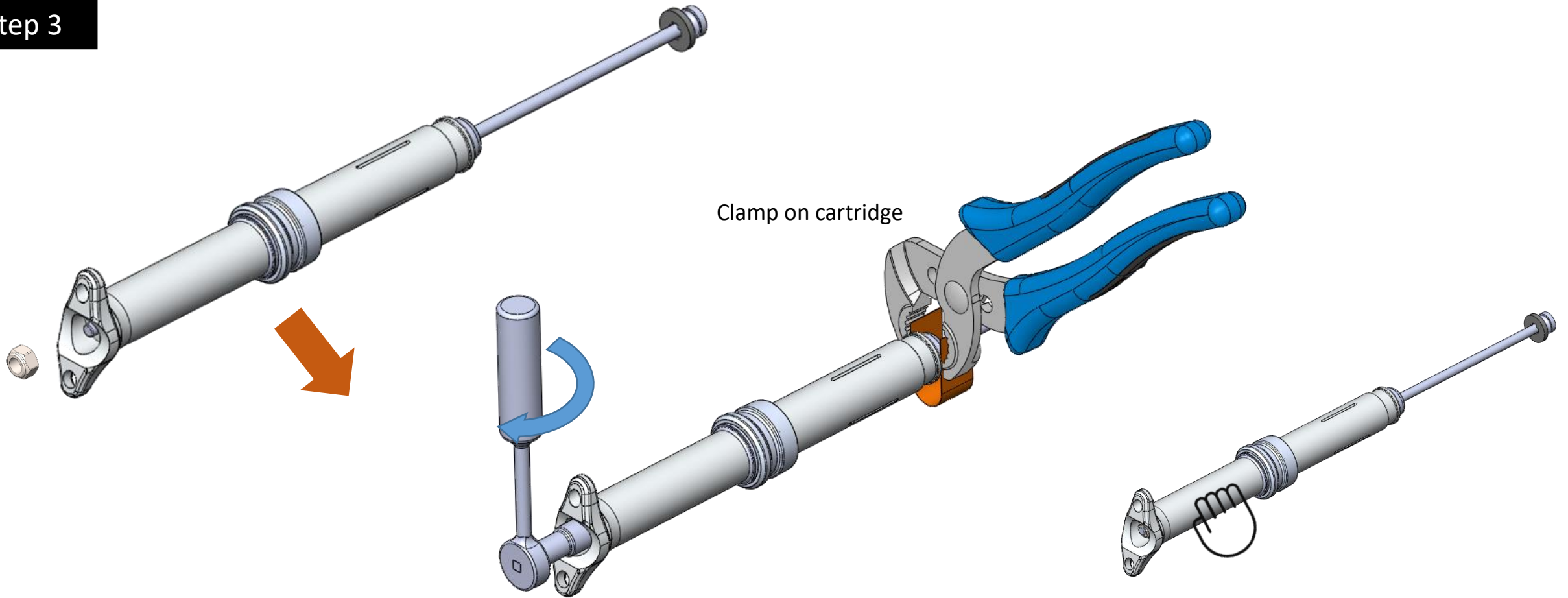
Step 1



## Step 2



### Step 3

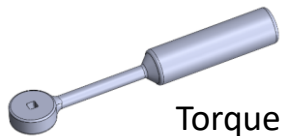


Clamp on cartridge

**Warning!** Screw the nut until the end of the thread, **BUT DO NOT** fix it at this step.

**Warning! DO NOT** use plier at this step, grab the shaft with hand and fix the nut with torque 4N.M/40kgf-cm

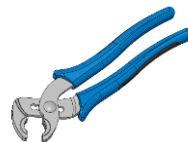
#### Tools:



Torque wrench



10mm Allen Key Socket

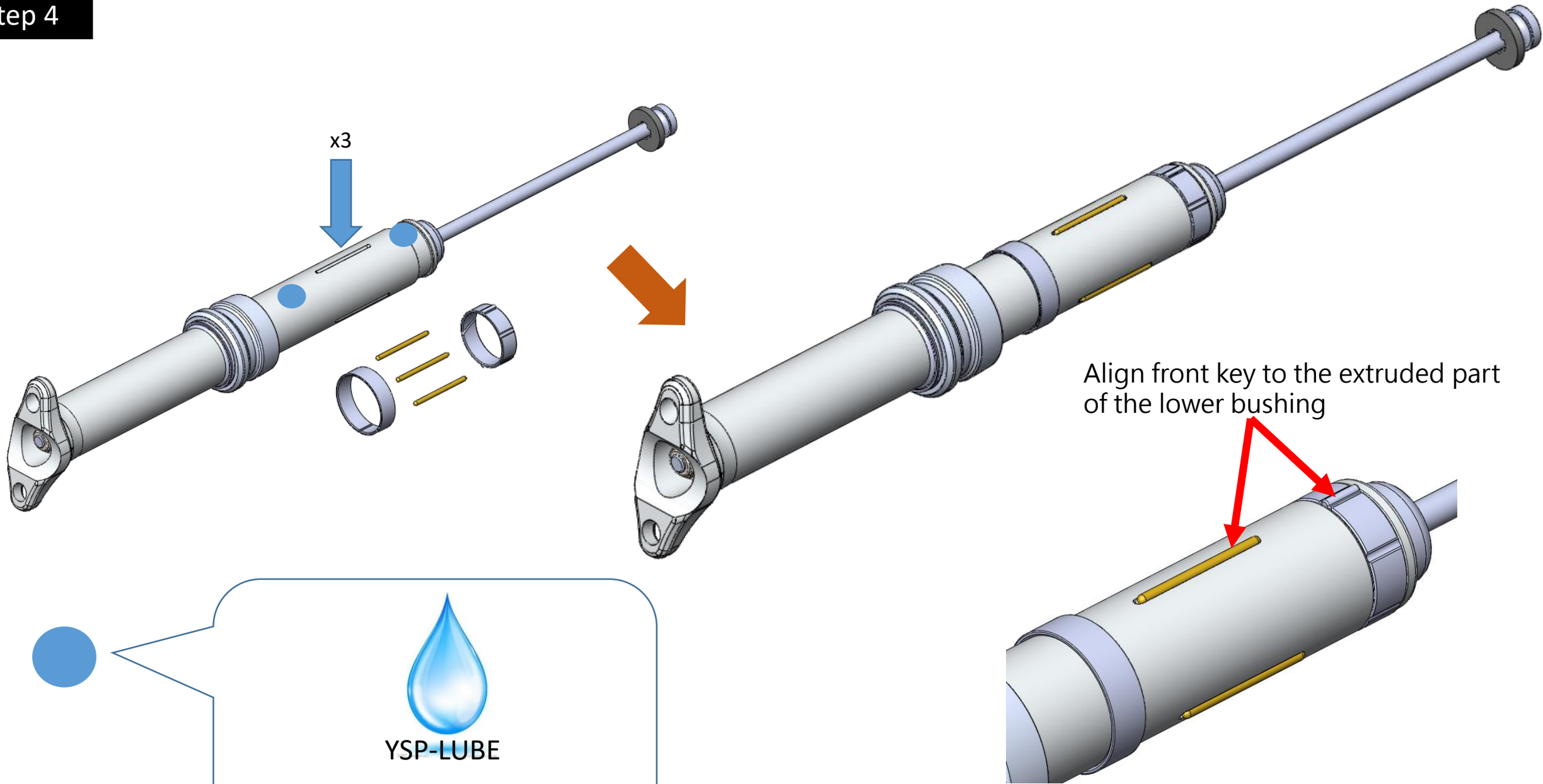


Plier




Cloth

# Step 4



●



**YSP-LUBE**

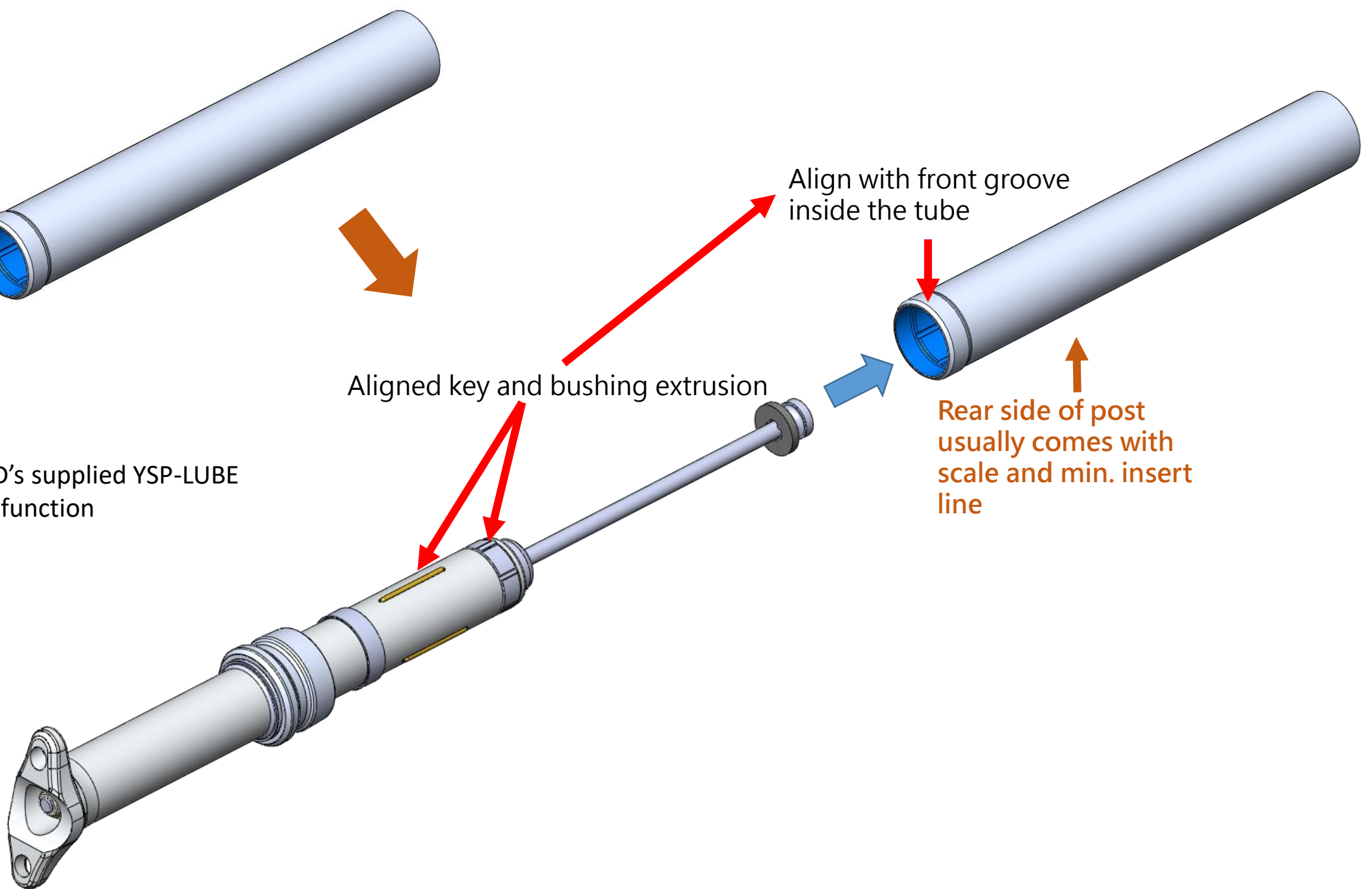
Warning! Use ONLY JD's supplied YSP-LUBE Lubricant for optimal function

# Step 5

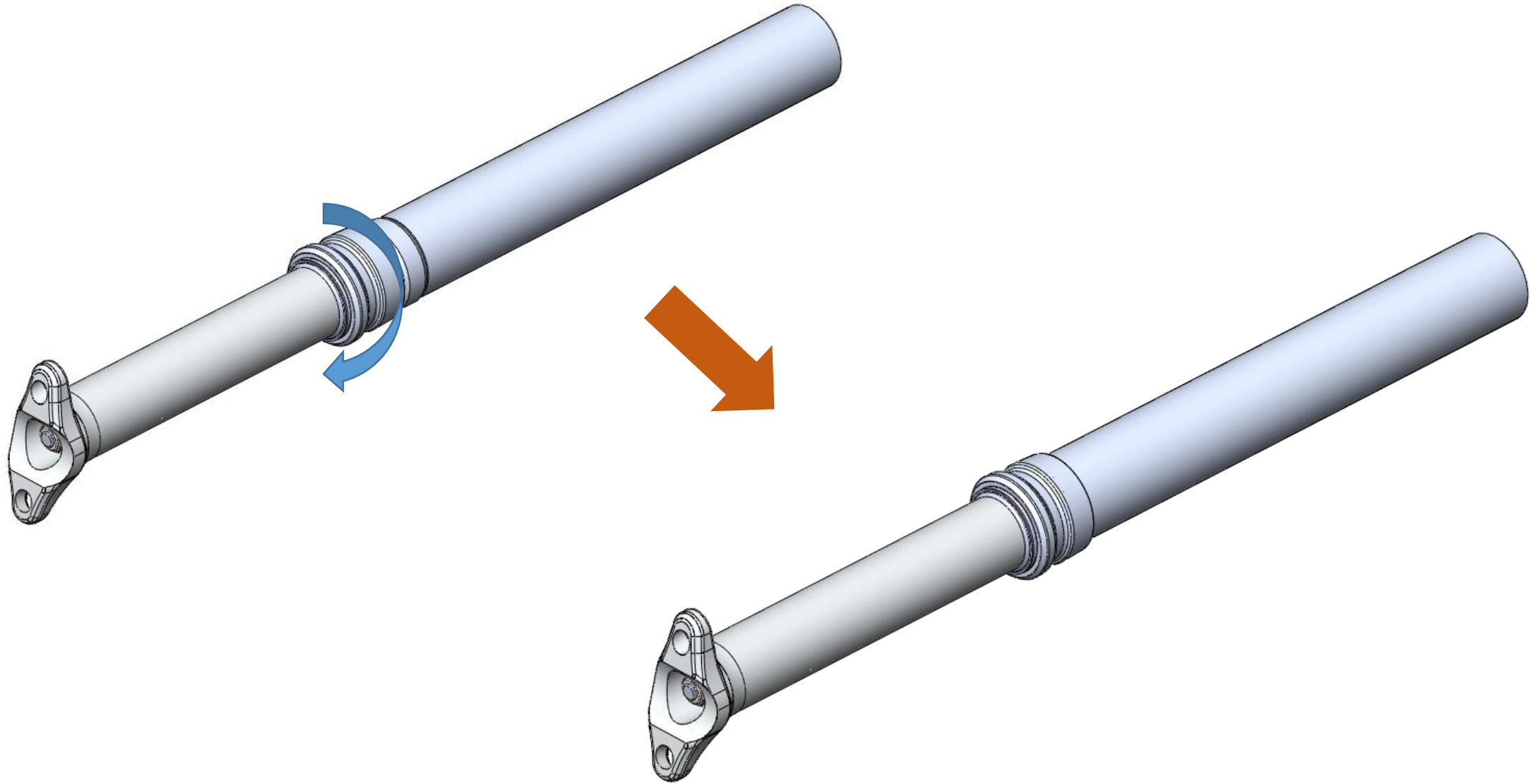


YSP-LUBE

Warning! Use ONLY JD's supplied YSP-LUBE Lubricant for optimal function

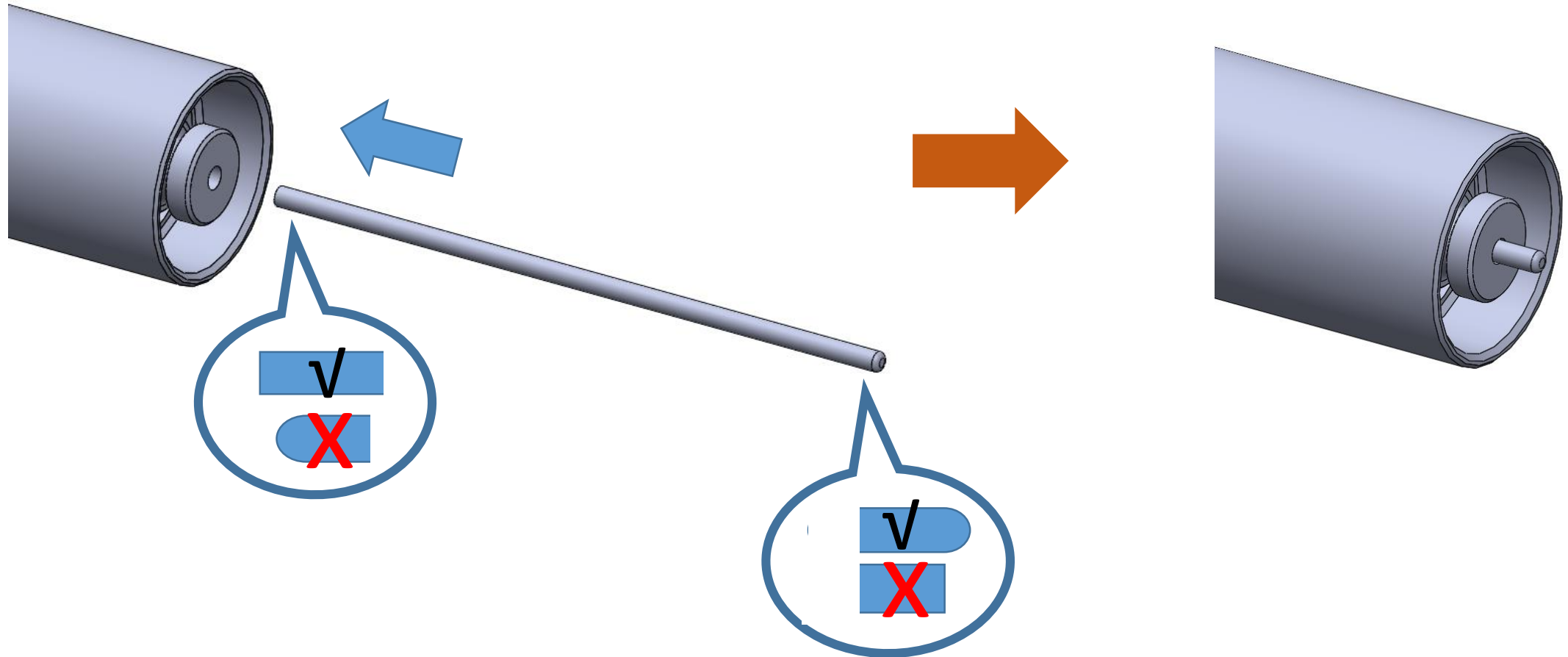


Step 6

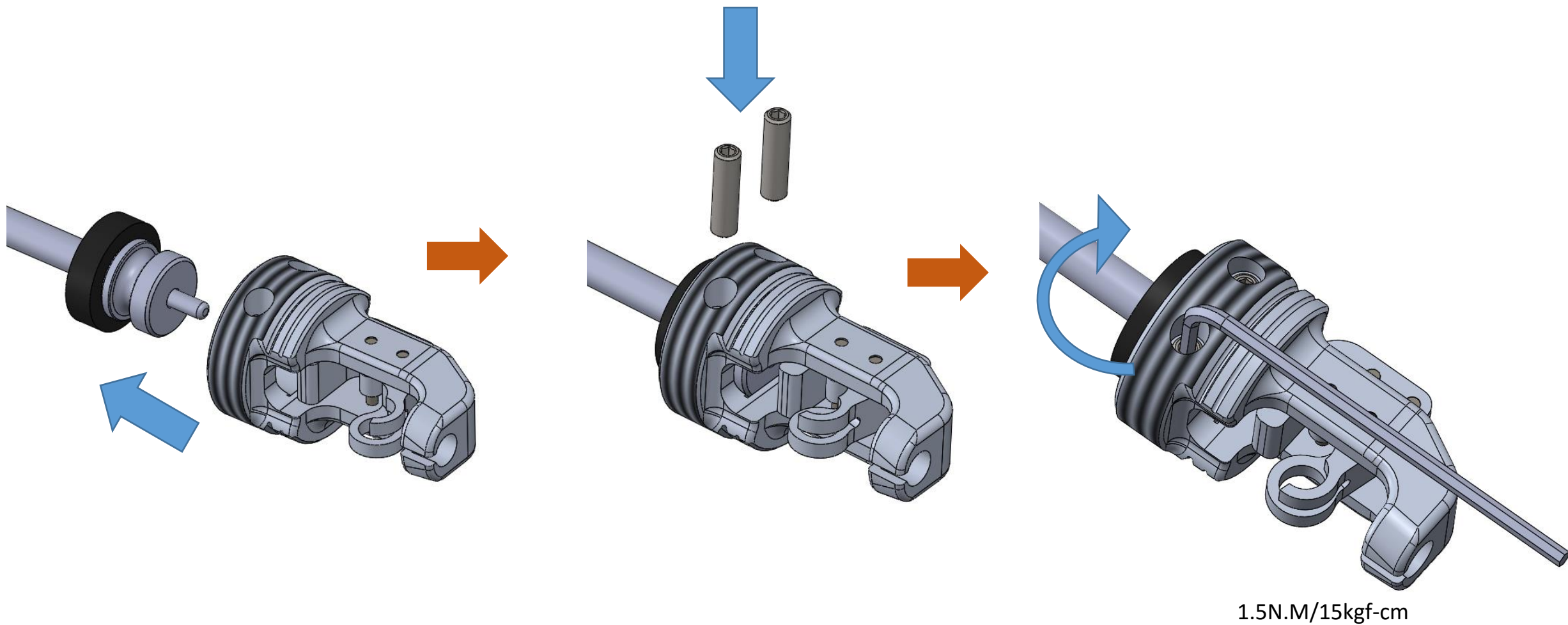




Step 7



Step 8

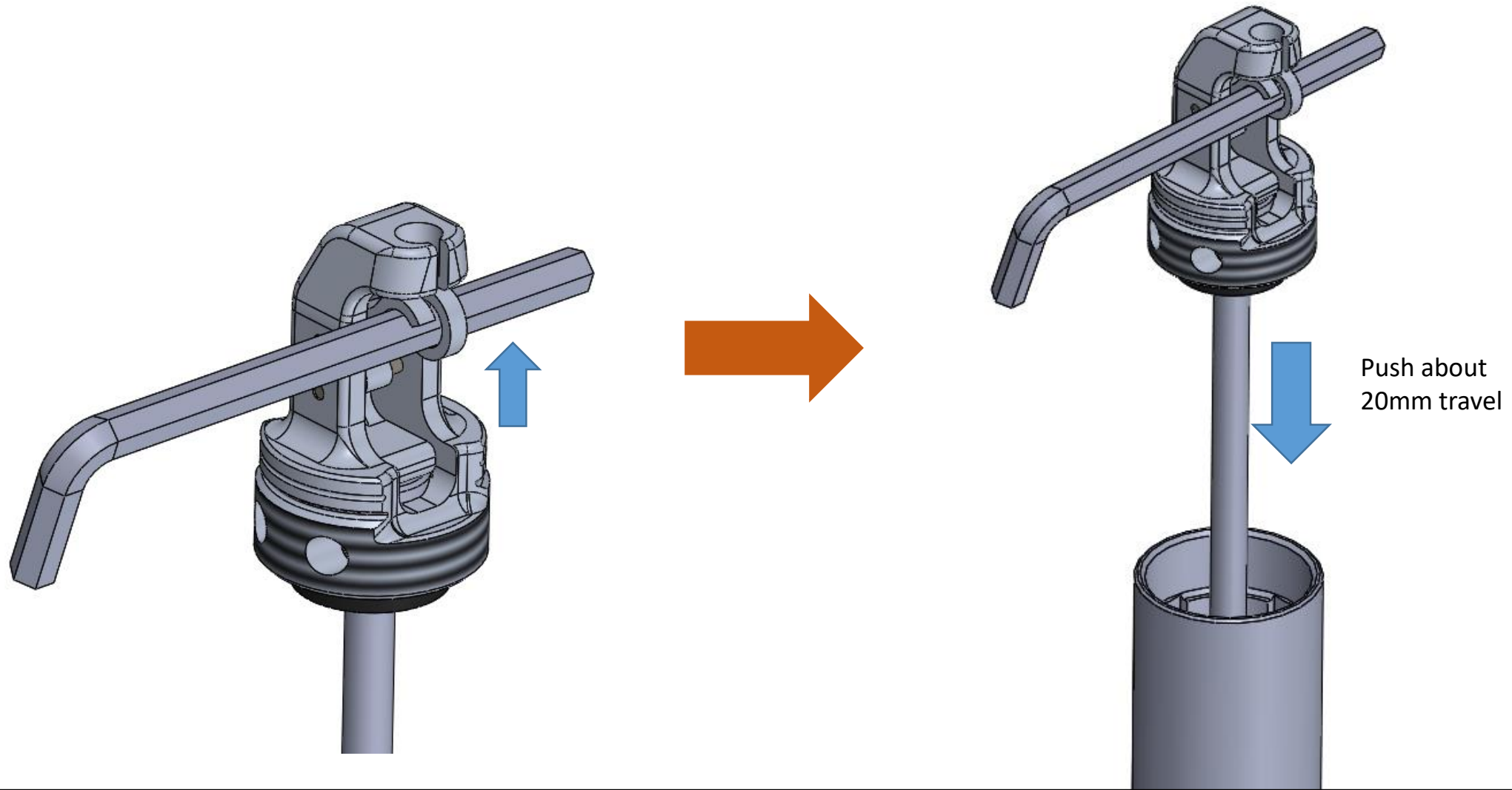


Tools:

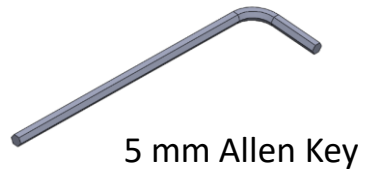


2mm Allen Key

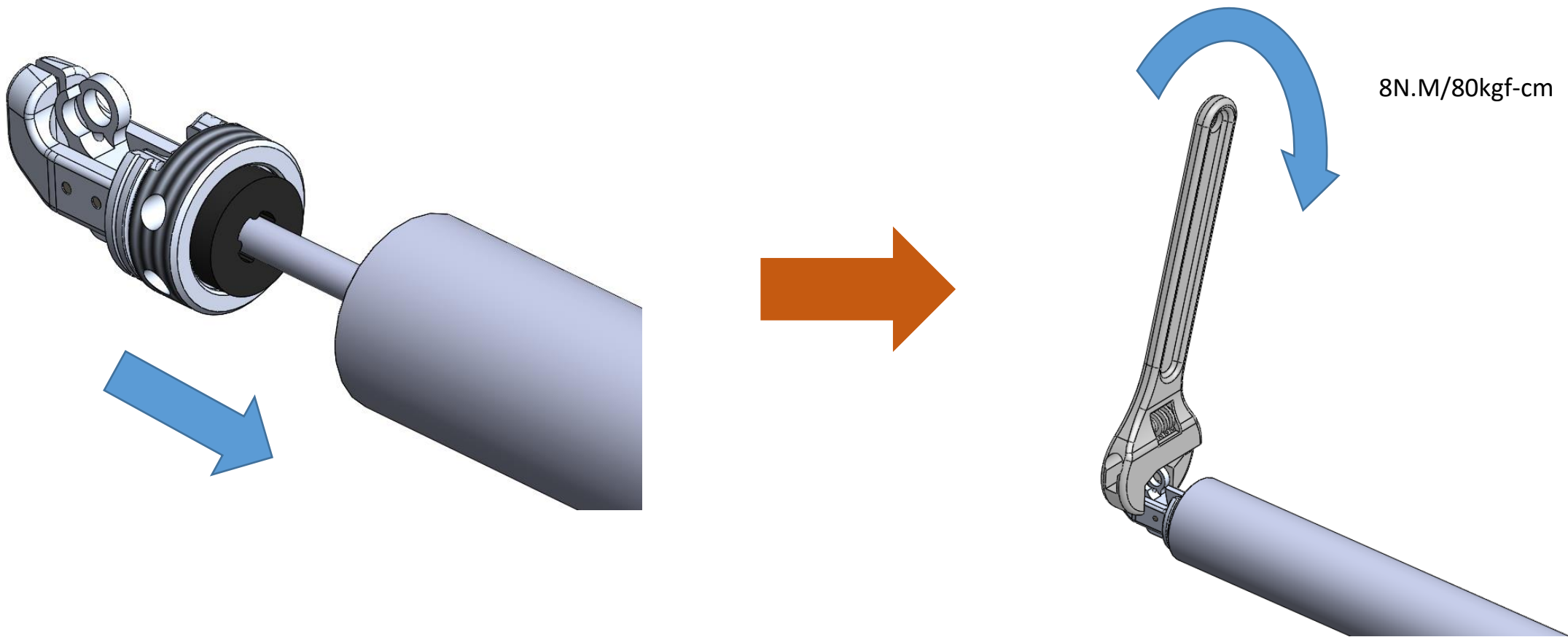
Step 9



Tools:



Step 10

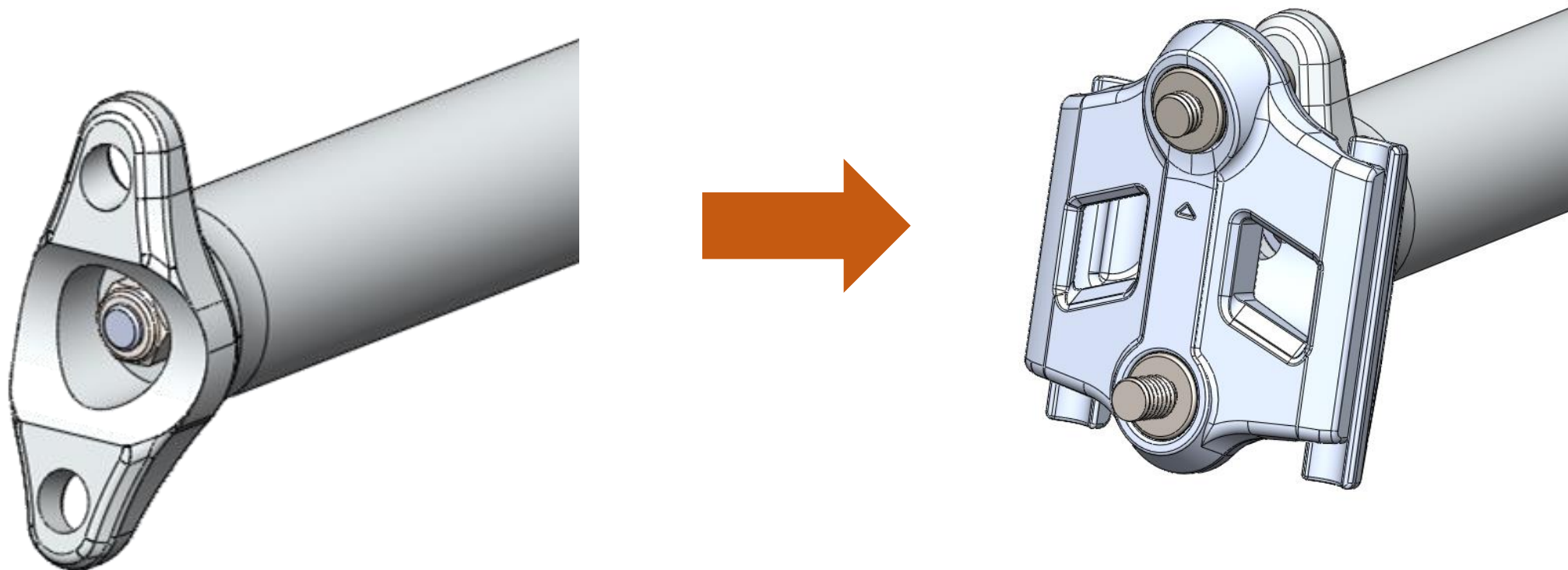


Tools:

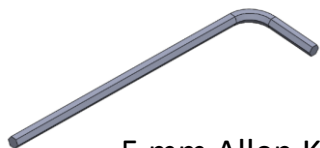


Wrench

Step 11



Tools:



5 mm Allen Key