

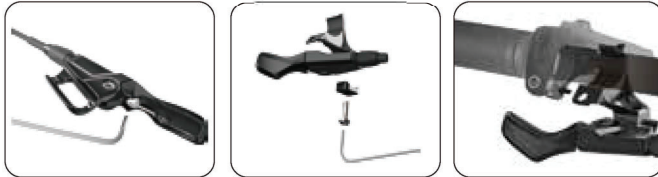
● **FL Multi position shifter lever assembly:**

Follow step 6 to 11 and fix the cable with a small screw as showed below left picture. Install lever at the left handlebar side (rider's left hand). Use 3 mm hex allen key to fix the clamp onto handlebar.



● **FL Multi position shifter with I Spec II mount:**

Follow step 6 to 11 and fix the cable with a small screw as showed below left picture. Loosen the brake clamp, slot the mount inside the clamp and tighten back to fix the lever.

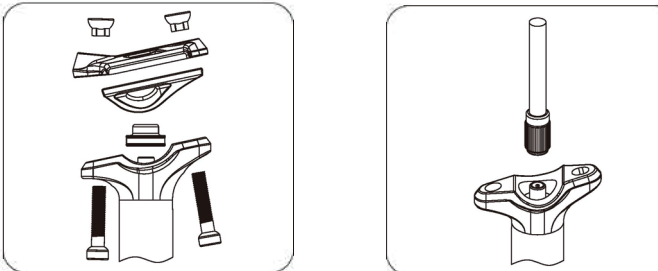


● **Adjusting the return speed:** (only when available)

JD dropper posts are all preset with the suitable air pressure for optimal return speed, however air pressure check is required and adjustment could be made from time to time.

Please note that you will need a high pressure pump to perform the following operations.

**In case to adjust the air pressure:**



1. Disassemble all of the clamps from the top head of the post.

2. Use a compatible shock pump and adjust to your desired pressure.

**⚠ WARNING**

Recommended operating pressures is 280-300psi.

**OPERATION**

**To lower seat post** - Press and hold the lever, un-weight seat and then push down or sit on the saddle to the desired height and then release the lever immediately.

**To raise seat post** - Remove weight from the saddle and press and hold the lever until the desired height is achieved. Release the lever.

**Notes:**

If the seat post is lifted while in the lowered position, the inner tube will extend from outer tube. this is normal and it will return to proper position once weight is applied to the saddle. Picking up the bike by the saddle can also cause a temporary, spongy feel.

**⚠ WARNING**

● Do not attempt aggressive riding until you are totally familiar with the operation and function of the seat post. Note: You will become familiar with this simple procedure quickly with practice.

**MAINTENANCE**

Routine maintenance of the post will provide years of trouble-free performance. Before every ride: clean the exposed part of the post with a cloth.

**⚠ WARNING**

- Incorrect sizing interface can result in the post slippage or failure, causing serious personal injury or death.
- Press the lever downward when post is in the down position will cause it to rise up quickly. Do not operate until the saddle is installed on the seat post and the post installed on the bike. Always make sure nothing is in the way of post as it goes from DOWN to UP position. This can cause serious injury.
- Do not adjust the height of the post while riding, as it may result in loss of control.
- Keep away mud and water. When storing for extended periods, keep post in the UP position.
- Do not disassemble or cut the seat post, this could cause severe personal injury and void of warranty.

- Do not loosen the main cap. Ensure the main cap is fully tightened at all the time.



- Always use lower torque recommendation by the manufacturer when installing this seat post.
- If you are not an experienced bicycle mechanic, or do not have the correct tools for this installation, please take the seat post with instructions to your local bike shop and let them handle the installation.

**WARRANTY**

This seatpost is warranted for a period of 2 years from the date of manufacture against defects in workmanship. The warranty is expressly limited to the repair or replacement of the defective part at JD's option and is the sole remedy of the warranty. The warranty applies only to the original owner and is not transferrable. Proof of purchase is required to validate warranty eligibility. The warranty does not cover normal wear and tear, routine maintenance, improper installation or improper use of the seat post. Modification of the post in any manner shall void the warranty JD Components Co., Ltd. shall not be responsible for incidental or individual costs incurred that are not covered by this warranty. The user assumes the risk of any personal injury or property damage, including damage to the seatpost and any other losses, if the seatpost is modified or improperly used at any time. This warranty gives the consumer specific legal rights which vary from state to state.



**HEIGHT ADJUSTABLE SEATPOST  
ASSEMBLY AND USER GUIDE**

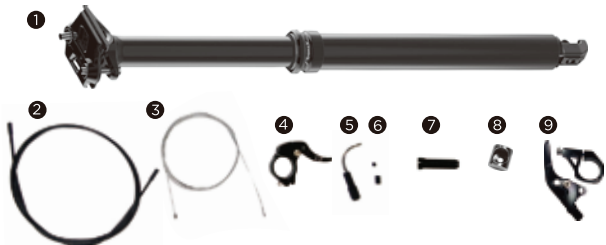
**TranzX**

EN

## INTRODUCTION

JD's Dropper Post, the adjustable seatpost in ICR (Internal Cable Routing) Version, providing riders with a way to adjust saddle height without tools. Freely and easily positioning your saddle height according to the terrain you meet. The remote lever & MICRO adjustment offer quick and safe seat position applied with reliable and robust technology- virtually No Play! Unique, elegant and an easy to assemble head design. Please read through these instructions thoroughly and carefully before installing and operating seatpost and always keep this manual for your further reference.

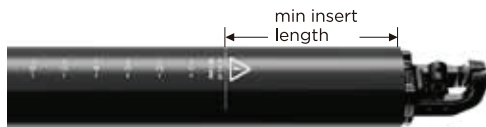
## PACKAGE CONTENT



- |                    |                     |                            |
|--------------------|---------------------|----------------------------|
| ① Dropper seatpost | ④ Clamp lever       | ⑦ Cable end cap            |
| ② Cable housing    | ⑤ Rotary ferrules   | ⑧ Inner cable nut          |
| ③ Cable            | ⑥ Nut and screw set | ⑨ Shifter lever (optional) |

## INTRODUCTION

- Ensure the post outer diameter conforms to the inner diameter of the seat tube of your frame.
- Please plan the cable routing on the bike first and make sure the length of cable and cable housing you need.
- You need a suitable frame with a 8mm hole to allow the inner cable to run through.
- Install your saddle on the clamp head with 5mm hex wrench to tighten at a torque of 8-10Nm.
- Insert the post into the frame and make sure the post's minimum length should be inserted into bike frame, tighten the seatclamp according to manufacturer's recommended torque and maximum torque of 7Nm.



- In case there is a **protection cap** included with the post, please refer to **Protection cap installation** before following below cable assembly process.

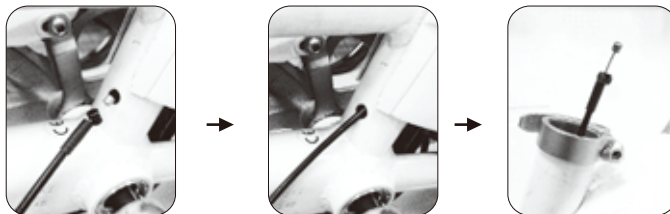
1. The dropper post uses internal cable routing end is designed to be compatible with bicycle frames that provide for such cable routing.



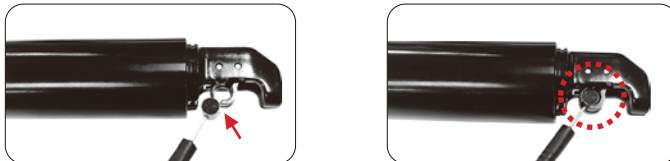
DO NOT DRILL OR MODIFY YOUR FRAME IN ANY WAY. Doing so will void the Warranty. Modification of your frame in any way may result in frame failure which could result in injury or death.



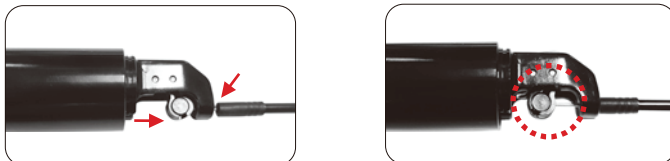
2. Assemble the cable, inner cable nut and cable housing.



3. Run cable through the hole in your frame.



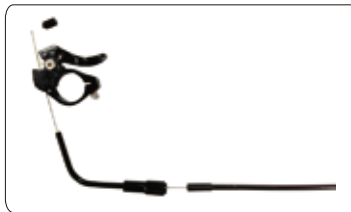
4. Fix the cable stopper to the pull rod, as shown above.



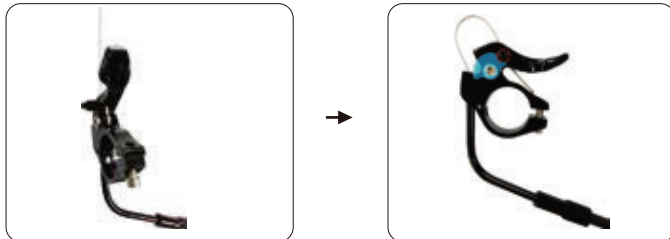
5. Pull the rod and insert the cable through the gap, fix the cable housing at the bottom recess part.

● **According to your lever options, please follow the instruction below for Standard, Shifter and FL Multi position shifter lever assembly.**

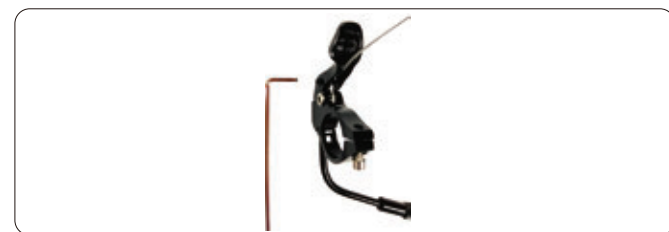
### ● Standard lever assembly:



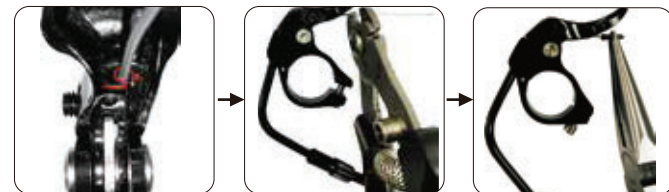
6. Run the cable through the rotary ferrules to the lever.



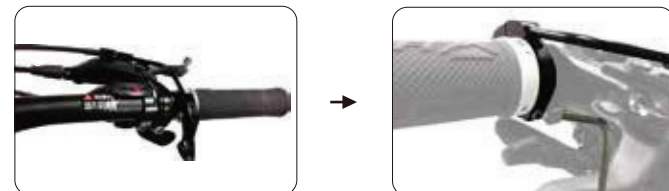
7. Put the nut into the lever with screw set at the left side of lever.  
⚠ The nut should be positioned on the curve part of the center blade.



8. Pull the cable until it is tight and fix the screw with 2mm allen key.



9. Push the lever for 5-10 times to eliminate possible cable loose.
10. Loosen the screw and pull the cable once again until it is tight, fix the screw with 2mm allen key.
11. Slide the cable into the guide under the lever, cut the cable in appropriate length and fix the cable end.



12. Use 3mm hex allen key to fix the clamp lever on the handlebar.  
Note: If the clamp size is 31.8 mm, it is meant to be fixed at the bar bore area of Road bar.

### ● Shifter lever assembly:

Follow step 6 **without the rotary ferrules** till step 11 to fix the cable end cap under the lever.



Install lever only at the left handlebar side (rider's left hand). Use 3 mm hex allen key to fix the clamp lever onto handlebar.

### ● Shifter lever with I Spec II mount:

Fix the cable to the lever, attach the I Spec II mount to the lever. Loosen the brake clamp, slot the mount inside the clamp and tighten back to fix the lever.

