



CHEETAH 15.5HP/16HP /18 HP

SIDE DISCHARGE MOWER

15.5HP BRIGGS & STRATTON

16 HP HONDA

18HP V TWIN BRIGGS & STRATTON

*It's all
good...*



RIDE-ON LAWN MOWER



OWNER / OPERATORS MANUAL

**PERSONAL INJURY AND/OR PROPERTY DAMAGE MAY OCCUR UNLESS SAFETY,
OPERATING AND SERVICE INSTRUCTIONS IN THIS MANUAL ARE STRICTLY
FOLLOWED**

**NOTE: In order to assist your Servicing Dealer please bring this Manual if Service
&/or Warranty work is required.**

OWNERS INFORMATION

TRACTOR MODEL NO: _____
Located under seat SERIAL NO: _____

ENGINE MODEL NO: _____ TYPE: _____

DATE OF PURCHASE: _____

ISSUED TO:

OWNERS NAME: _____

ADDRESS: _____

TOWN/CITY: _____

ISSUED BY:

AUTHORISED MOWER
DEALER _____

ADDRESS: _____

TOWN/CITY: _____

PRE DELIVERY CHECK LIST

Check parts Assemble Service Instruction



SAFETY INSTRUCTIONS

1. Read, understand and follow all instructions in the Owner/Operators manual.
2. Know the controls and how to stop the engine quickly in an emergency.
3. Allow only responsible adults who are familiar with the instructions in this manual, to operate the machine.
4. Clear the area to be mowed of loose objects such as sticks, stones, bones, wire, toys, debris etc., which could be picked up and thrown by the blades.
5. DO NOT mow whilst people, especially children, or pets are in the mowing area.
6. DO NOT mow in any direction on slopes beyond 15 degrees (1 in 3.75)(27%)
7. Exercise extreme caution on slopes.
8. Reduce speed on slopes and in sharp turns to prevent overturning or loss of control.
9. Start or stop slowly when on slopes.
10. Mow up and down slopes, not across the slope.
11. Stay alert for holes or bumps in the terrain and other hidden hazards.
12. Use care when pulling loads- use only approved hitch point; limit loads to those you can safely control; do not turn sharply; use care when backing up.
13. Maximum weight on tow hitch (9kg)
14. Maximum tow weight (Trailer & Load) 90kg
15. DO NOT use ground-engaging attachments. Dozer Blade, plough etc.
16. Watch out for traffic when crossing or operating the mower near roadways.
17. Stop the blades rotating before crossing surfaces other than grass.
18. When mowing, never direct discharge of material toward bystanders or allow anyone near the machine while it is in operation.
19. Before leaving the operators position, - disengage the mower blade, place gear lever into neutral and apply park brake. Stop the engine and remove the key
20. Disengage drive to attachments and stop engine before refueling; ; before clearing blockages from chute; before checking, cleaning or working on the mower; after striking a foreign object, check the mower for damage and make repairs before restarting and operating the equipment; if machine starts to vibrate abnormally check immediately.
21. Disengage drive to attachments when transporting or not in use.
22. A mower operator should be in good physical and mental health and not under the influence of alcohol or any drug which might impair vision, co-ordination or judgment.
23. Never mow while barefoot or wearing open sandals or thongs. Wear long trousers and heavy shoes.
24. It is advisable to wear suitable protective safety gear when operating a mower.
25. Mow only in daylight or good artificial light.
26. Before using, always visually inspect to see that blades, bolts and cutter assembly are not worn or damaged. Replace worn or damaged blades and bolts in sets to preserve balance.
27. Check all nuts, bolts and screws often, always be sure the mower is in safe operating condition.
28. Keep safety devices (guards and switches) in place and in working order.
29. Never use the mower unless guards provided by the manufacturer, are in position.
30. Ensure any replacement parts used comply with the original manufacturer's recommendations and specifications.
31. Replace worn or faulty mufflers.
32. Keep machine free of grass, leaves, or other debris, excessive oil, grease, or spilt fuel. These can be a fire hazard.
33. Refuel outdoors only. Do not smoke while fuelling engine. Never remove the cap of the fuel tank or add petrol while the engine is running or the engine is hot. Use an approved fuel container, funnel or siphon hose (static/spark resistant). Remove fuel cap slowly to relieve any tank pressure. If fuel is spilled, do not attempt to start the engine but move machine away from the area of the spill and avoid creating any source of ignition until fuel vapors have dissipated.
34. Check for fuel leaks while refueling, before and while using the mower. If a fuel leak is found, do not start or run the engine until the fuel leak is fixed and spilt fuel is wiped away.
35. Do not operate engine in a confined space where exhaust fumes (carbon monoxide) can collect.
36. Do not over-speed the engine or alter governor settings. Excessive speed is dangerous and shortens mower life.
37. Stop the engine whenever you leave the mower, even for a moment.
38. Store the mower in a well-ventilated room away from naked flames such as may be found in hot water heaters.
39. Do not lend or sell the mower, without the owner/operators Manual.

PRE-DELIVERY INSTRUCTIONS

INTRODUCTION

The purpose of this section of the manual is to ensure the dealer makes the necessary installations, adjustments and checks required, before the machine is operational. This begins upon receiving the crated mower and is finalised once the mower has been sold. This is the minimum amount of work required; however it should not be limited to the areas detailed in this procedure.

RESPONSIBILITY

It is the responsibility of the dealer to ensure that before a machine is delivered to a customer, it is in satisfactory operating condition.

PROCEDURE

UNPACK LAWN MOWER

Check loose parts supplied against the following list:

- Owner/Operators Manual
- Engine Owners Manual
- Ignition key set
- Kingcat Cap
- Battery clamp kit
- Lift springs (1200)deck to be fitted each side from under side of chassis to the deck

BATTERY

- a) Remove battery from mower and place on level surface.
- b) Remove the tape covering the filler holes on the battery.
- c) Fill each cell of the battery to between the upper and lower levels marked on the battery using 1.240-1.260 specific gravity electrolyte battery acid.
- d) Using a 12V, 4 or 8amp battery charger, charge the battery for a period of 30 minutes.

e)

After charging proceed as follows:

Install the battery caps

Allow battery to stand for 30 minutes.

Check acid levels in all battery cells (top up if necessary).

Replace battery, battery clamp and tighten bolt.

Install the red battery lead on to the positive terminal first, and then the black battery lead on to the negative.

SERVICE

TYRES

Before operation ensure that tyre pressures are equal.

The recommended pressure is: Front (20 P.S.I.).
Rear (15 P.S.I.)

ENGINE OIL

Before operation ensure that engine oil level is to the full mark on the dipstick. (Refer to Engine Owners Manual for correct oil classification to use).

TO CHECK OPERATION OF SAFETY SWITCHES

CUTTER ENGAGEMENT SWITCH

Sit on seat with cutter engaged and park brake on (locked), attempt to start engine using ignition switch.

Engine should not start.

SEAT SWITCH

Sit on seat, with park brake on (locked) and start engine, engage cutter, and lift weight from seat.

Engine should stop.

OPERATING INSTRUCTIONS

THE CONTROLS AND THEIR FUNCTIONS ARE AS FOLLOWS:-

Ignition switch- Used to start and stop engine. Insert key, turn key all the way right to "start" (3rd) position to start engine. When key is released from "start" (3rd) position it will return to "on" (2nd) position. Turn key all the way left to "off" (1st) position to stop engine. Remove key from "off" (1st) position to lock ignition switch.

Throttle control lever- Used to regulate engine speed and cutter speed. Push lever fully up for slow engine speed. Push lever to bottom end of slot for fast engine speed.

Choke control- Used to start a cold engine. 11.5HP,13HP,14.5HP,16HP,17.5HP engine. Push throttle control lever fully down to start cold engine. Pull throttle control lever back after engine has started.

18HP B&S. Pull choke knob fully out to cold start then push choke knob all the way in after engine has started.

Seat switch- Used to stop engine when operator is not on the seat

Cutter engagement lever- (11.5HP ,13HP and 14.5HP)

Used to start and stop mowing attachment. With engine running at medium/fast speed, pull lever up to "engage" position to start mowing attachment.

Push lever down to "disengage" position to stop mowing attachment.

For 15.5HP, 16.0HP, 17.5HP and 18HP
PTO Switch

Used to start and stop mowing attachment. With engine running at medium / fast speed , push switch down to start mowing attachment. Push switch up to stop mowing attachment

Cutting height adjustment lever-Used to change the mowing attachment cutting height. To raise cutting height, pull up on lever, stop at desired cutting height. To lower cutting height, lower the lever , stop at desired cutting height

FOR BEST SHORT MOWING PERFORMANCE , LOWER THE DECK UNTIL SKIDS OR ROLLERS JUST TOUCH THE GROUND

Brake Pedal- Used to stop machine travel before setting park brake. Push pedal down to apply brake. Remove foot from pedal to release brake.

CAUTION : DO NOT ATTEMPT TO OPERATE MOWER WITH HANDBRAKE ENGAGED TO AVOID EXCESSIVE BRAKE WEAR

Clutch—(gearbox model) Used to disconnect drive to transmission and select correct gear

CAUTION

1/ Never attempt to change gear without depressing clutch pedal

2/Do not ride the clutch to obtain slower speeds. Always select the appropriate gear

3/Always make sure machine is stationary before changing gears.

The instruments & their functions are as follows:-

Park Brake Knob- Used to keep machine stationary. Fully depress the Brake pedal and push brake knob down while releasing brake pedal to "on" (lock).

To return park brake knob to "off" (unlock) position, depress brake pedal on park brake fully and knob will return to "off" (unlock) position.

Oil level dipstick- Used to indicate oil level in engine when engine is not running. (Refer to engine owner's manual for instructions on checking engine oil level)

STARTING ENGINE

ELECTRIC STARTER:-

Cold engine: Check engine oil level, check fuel level, open fuel tap. To start engine, place throttle control lever into choke position (13.4kW (18HP) pull choke fully out), ensure mowing attachment control is in the "off" position, park brake locked, insert key in ignition switch, turn key all the way right to start (3rd) position, release key when engine has started. Note: More than 15 seconds of continuous cranking can damage the starter motor. Short starting cycles give best starter motor life. Allow starter motor to cool for 2 minutes before attempting to restart engine. After engine starts gradually move throttle control lever, up (13.4kW (18HP) - push choke knob in) to obtain desired engine speed.

Hot engine: To start engine, place throttle control slightly past slow position, ensure mowing attachment control is in the "off" position, and park brake locked

Insert key in ignition switch, turn key all the way right to start (3rd) position, release key when engine has started. Move throttle control lever to obtain desired engine speed.

STOPPING ENGINE

When stopping engine, ensure mowing attachment control is in the off position, return throttle to slow position, lock park brake, allow engine to idle for 30 seconds, turn ignition switch to the "off" (1st) position.

DRIVING

TO TRAVEL MACHINE FORWARD OR REVERSE: -(gearbox model)

With engine running set throttle control lever to obtain desired engine speed, Full throttle for the best mowing finish and for engine cooling.

Release park brake, depress clutch pedal and select appropriate gear and release pedal slowly

NOTE Use slower ground speed for traveling up and down slopes or mowing heavy growth.

TO STOP MACHINE TRAVEL-

Apply clutch pedal in fully, this will disconnect the drive belt to the transmission, then apply brake pedal and put gear lever into neutral position.

DRIVE PEDAL (Hydrostatic model)

Used to control an infinitely variable ground speed between zero and maximum in forward or reverse. Also to select neutral. With engine running and park brake released push down on foot pedal toe plate to travel forward, push down on foot pedal heel plate to travel in reverse. When pressure is released from front or back of pedal it will return to neutral position

Transmission pump by-pass lever- Used to disengage the transmission to allow the mower to be pushed easily. Positioned in front of left rear wheel. Push lever in for normal operation or lift up, pull out and lock in position to engage free wheel.

Note: When by-pass lever is engaged, the drive pedal will not function.

DRIVING—to travel machine forward or reverse (hydrostatic model)

With engine running, set throttle control lever to obtain desired engine speed, 3/4 to full throttle for the best mowing finish and for engine and transmission cooling. Release park brake, let the clutch/brake pedal all the way out, apply downward pressure on front of drive pedal with foot to travel forward, or apply downward pressure on back of drive pedal with heel to travel in reverse. It is not necessary to apply foot brake before changing from forward to reverse or reverse to forward. The amount of pedal travel is used to control the ground speed, small downward travel will give a slow ground speed, full downward travel will give a fast ground speed.

NOTE Use slower ground speed for travelling up and down slopes or mowing heavy

MAINTENANCE SCHEDULE

BEFORE EACH USE

Check engine oil level, adjust if required
Check engine air cleaner foam pre-cleaner, service if required
Check engine rotating screen/finger guard, clean if required
Check operation of safety switches, service if required
Check foot brake operation, adjust if required

Check engine tyre pressures, adjust if required
Check clutch pedal operation, adjust if necessary (Hydrostatic and gear models)
Grease stub axles
Check for loose fasteners, tighten if required

BEFORE STORAGE

Change engine oil - Clean machine - Lubricate as necessary

EVERY 5 HOURS

Check engine oil level, adjust if required
Check engine air cleaner foam pre-cleaner, service if required*

Check engine rotating screen/finger guard, clean if required*

*Service more often under dusty conditions, or where air borne debris is present

1 MONTH OR 5 HOURS which ever occurs first

Change engine oil
Check engine air cleaner foam pre-cleaner, service if required
Check engine rotating screen/finger guard, clean if required
Check for loose fasteners, tighten if required
Check foot brake operation, adjust if required
Check operation of safety switches, service if required
Check clutch pedal operation, adjust if required (Hydrostatic and gear models)

Check tyre pressures, adjust if required
Grease stub axles
Check mowing attachment cutter blades, bolts, nuts, disc/s, housing, and guards for damage, replace if required
Grease cutter housing and tension arm
Check and adjust belt tensions and /or free play

DATE / / HOURSDEALER.....

3 MONTHS OR 25 HOURS which ever occurs first

Change engine oil if operating under heavy load or high ambient temperature
Check engine air cleaner foam pre-cleaner, service if req *
Check engine rotating screen/finger guard, clean if required *
Check battery condition, service if required
Check foot brake operation, adjust if required
Check operation of safety switches and replace if required

Check clutch pedal operation, adjust if required (Hydrostatic and gear models)
Check tyre pressures, adjust if required
Grease stub axles *
Check for loose fasteners, tighten if required
Check mowing attachment cutter blades, bolts, nuts, disc/s, housing, and guards for wear or damage, replace if required
Grease cutter housing and tension arm

*Service more often under dusty conditions, or where air borne debris is present

DATE / / HOURS.....DEALER.....

6 MONTHS OR 50 HOURS which ever occurs first

Change engine oil
If fitted clean engine exhaust spark arrester
Check engine air cleaner foam pre-cleaner , service if required *
Check engine rotating screen/finger guard, clean if required *
Check foot brake operation and pads for wear, adjust or replace if required
Check tyre pressures, adjust if required
Check operation of safety switches, service if required
Check belts for wear or damage, replace if required

Check clutch operation, adjust if necessary (Hydrostatic and gear models)
Grease stub axles *
Check steering rack and pinion for wear, adjust if required
Check for loose fasteners, tighten if required
Check battery condition, service if required
Check mowing attachment cutter blades, bolts, nuts, disc/s, housing, and guards for wear or damage, replace if required
Grease cutter housing and tension arm
Check and adjust belt tensions and / or free play

*Service more often under dusty conditions, or where air borne debris is present

DATE / / HOURS.....DEALER.....

9 MONTHS OR 75 HOURS which ever occurs first

Change engine oil if operating under heavy load or high ambient temperature
Check engine air cleaner foam pre-cleaner, service if req *
Check engine rotating screen/finger guard, clean if required
Check for loose fasteners, tighten if required
Check foot brake operation, adjust if required
Check operation of safety switches and replace if required

Check clutch operation, adjust if necessary(Hydrostatic and gear models)
Check tyre pressures, adjust if required
Grease stub axles *
Check battery condition, service if required
Check mowing attachment cutter blades, bolts, nuts, disc/s, housing, and guards for wear or damage, replace if required
Grease cutter housing and tension arm

*Service more often under dusty conditions, or where air borne debris is present

DATE / / HOURS.....DEALER.....

12 MONTHS OR 100 HOURS which ever occurs first

If fitted replace engine oil filter.
Change engine oil.
Check engine spark plug, clean, adjust, or replace if required.
If fitted clean engine exhaust spark arrester.
Check engine air cleaner foam pre-cleaner, service if req *.
Replace engine air cleaner cartridge, service if required*.
Clean engine cooling system*.
Check foot brake operation and pads for wear, adjust or replace if req.
Replace in-line fuel filter.
Check tyre pressures, adjust if required.
Grease stub axles *.

Check clutch operation, adjust if required (Hydrostatic and gear models)
Check belts for wear or damage, replace if required.
Check operation of safety switches, service if required.
Check battery condition, service if required.
Check for loose fasteners, tighten if required
Check steering rack and pinion for wear, adjust if required.
Check mowing attachment cutter blades, bolts, nuts, disc/s, housing, and guards for wear or damage, replace if required.
Grease cutter housing and tension arm
Check and adjust belt tensions and / or free play

*Service more often under dusty conditions, or where air borne debris is present

DATE / / HOURS.....DEALER.....

15 MONTHS OR 125 HOURS which ever occurs first

Change engine oil if operating under heavy load or high ambient temperature.
Check engine air cleaner foam pre-cleaner, service if required *.
Check engine rotating screen/finger guard, clean if required *.
Check operation of safety switches and replace if required.
Check foot brake operation, adjust if required.
Check clutch operation and adjust if required -

(Hydrostatic and gear models)
Grease stub axles *.
Check tyre pressures, adjust if required.
Check for loose fasteners, tighten if required.
Check battery condition, service if required.
Check mowing attachment cutter blades, bolts, nuts, disc/s, housing, and guards for wear or damage, replace if required.
Grease cutter housing and tension arm
Check and adjust belt tensions and / or free play

*Service more often under dusty conditions, or where air borne debris is present

DATE / / HOURS.....DEALER.....

18 MONTHS OR 150 HOURS which ever occurs first

Change engine oil.
If fitted clean engine exhaust spark arrestor.
Check engine air cleaner foam pre-cleaner, service if required *.
Check engine rotating screen/finger guard, clean if required *.
Check foot brake operation and lining for wear, adjust or replace if req.
Check operation of safety switches, service if required.
Check tyre pressures, adjust if required.
Check clutch operation , adjust if required (Hydrostatic and gear models)

Check battery condition, service if required.
Check for loose fasteners, tighten if required.
Check belts for wear or damage, replace if required.
Check steering rack and pinion for wear, adjust if required.
Grease stub axles *.
Check mowing attachment cutter blades, bolts, nuts, disc/s, housing, and guards for wear or damage, replace if req
Grease cutter housing and tension arm
Check and adjust belt tensions and/or free play

*Service more often under dusty conditions, or where air borne debris is present

DATE / / HOURS.....DEALER.....

21 MONTHS OR 175 HOURS which ever occurs first

Change engine oil if operating under heavy load or high ambient temperature.
Check engine air cleaner foam pre-cleaner, service if required *.
Check engine rotating screen/finger guard, clean if required *.
Check foot brake operation, adjust if required.
Check operation of safety switches and replace if required.

Check clutch operation,adjust if required (Hydrostatic and gear models)
Check tyre pressures, adjust if required.
Grease stub axles *.
Check battery condition, service if required.
Check for loose fasteners, tighten if required.
Check mowing attachment cutter blades, bolts, nuts, disc/s, housing, and guards for wear or damage, replace if required
Grease cutter housing and tension arm

*Service more often under dusty conditions, or where air borne debris is present

DATE / / HOURS.....DEALER.....

24 MONTHS OR 200 HOURS which ever occurs first

If fitted replace engine oil filter.
Change engine oil.
Check engine spark plug, clean, adjust, or replace if required.
If fitted clean engine exhaust spark arrestor.
Check engine air cleaner foam pre-cleaner, service if req *.
Check engine air cleaner cartridge, service if required.
Clean engine cooling system*.
Replace in-line fuel filter.
Check foot brake operation and pads for wear, adjust or replace if req.
Check operation of safety switches, service if required.
Check tyre pressures, adjust if required.

Grease stub axles *
Check steering rack and pinion for wear, adjust if required
Check belts for wear or damage, replace if required.
Check battery condition, service if required
Check for loose fasteners, tighten if required
Check mowing attachment cutter blades, bolts, nuts, disc/s, housing, and guards for wear or damage, replace if required.
Grease cutter housing and tension arm
Check and adjust belt tensions and / or free play

*Service more often under dusty conditions, or where air borne debris is present

DATE / / HOURS.....DEALER.....

27 MONTHS OR 225 HOURS which ever occurs first

Change engine oil if operating under heavy load or high ambient temperature.
Check engine air cleaner foam pre-cleaner, service if req *.
Check engine rotating screen/finger guard, clean if req *.
Check foot brake operation, adjust if required.
Check operation of safety switches and replace if req.
Check tyre pressures, adjust if required.

Check clutch operation, adjust if required (Hydrostatic and gear models) Grease stub axles *.
Check battery condition, service if required.
Check for loose fasteners, tighten if required.
Check mowing attachment cutter blades, bolts, nuts, disc/s, housing, and guards for wear or damage, replace if req. Check and adjust belt tensions and / or freeplay

*Service more often under dusty conditions, or where air borne debris is present

DATE / / HOURS.....DEALER.....

30 MONTHS OR 250 HOURS which ever occurs first

Change engine oil.
If fitted clean engine exhaust spark arrestor.
Check engine air cleaner foam pre-cleaner, service if required *.
Check engine rotating screen/finger guard, clean if required *.
Check foot brake operation and pads for wear, adjust or replace if req.
Check operation of safety switches, service if required.
Check tyre pressures, adjust if required.

Check clutch operation, adjust if required (Hydrostatic and gear models)
Grease stub axles *.
Check steering rack and pinion wear, adjust if required.
Check mowing attachment cutter blades, bolts, nuts, disc/s, housing, and guards for wear or damage, replace if required.
Check belts for wear or damage, replace if required
Check battery condition, service if required.
Check for loose fasteners, tighten if required
Grease cutter housing and tension arm

*Service more often under dusty conditions, or where air borne debris is present

DATE / / HOURS.....DEALER.....

33 MONTHS OR 275 HOURS which ever occurs first

Change engine oil if operating under heavy load or high ambient temp.
Check engine air cleaner foam pre-cleaner, service if required *
Check engine rotating screen/finger guard, clean if required *
Check foot brake operation, adjust if required
Check operation of safety switches and replace if required

Check clutch operation, adjust if required (Hydrostatic and gear models)
Check tyre pressures, adjust if required
Grease stub axles *
Check mowing attachment cutter blades, bolts, nuts, disc/s, housing, and guards for wear or damage, replace if required
Check battery condition, service if required
Check for loose fasteners, tighten if required
Grease cutter housing and tension arm

*Service more often under dusty conditions, or where air borne debris is present

DATE / / HOURS.....DEALER.....

36 MONTHS OR 300 HOURS which ever occurs first

If fitted replace engine oil filter Change engine oil
Check engine spark plug, clean, adjust, or replace if required
If fitted clean engine exhaust spark arrestor
Check engine air cleaner foam pre-cleaner, service if required *
Check engine air cleaner cartridge, service if required
Clean engine cooling system*
Replace in-line fuel filter
Check foot brake operation and lining for wear, adjust or replace if req
Check operation of safety switches, service if required
Check clutch operation, adjust if required (Hydrostatic and gear models)

Check tyre pressures, adjust if required
Grease stub axles *
Check steering rack and pinion wear, adjust if required
Check belts for wear or damage, replace if required
Check and adjust belt tensions and / or free play
If fitted check mowing attachment brake pad for wear, replace if required
Check battery condition, service if required
Check for loose fasteners, tighten if required
Check mowing attachment cutter blades, bolts, nuts, disc/s, housing, and guards for wear or damage, replace if required
Grease cutter housing and tension arm

*Service more often under dusty conditions, or where air borne debris is present

DATE / / HOURS.....DEALER.....

MAINTENANCE INSTRUCTIONS

Before servicing, disconnect spark plug wire and ground it, disconnect battery at negative terminal, to prevent accidental starting. Reference to the left or right side of the machine is determined by sitting in the operating position.

IMPORTANT: If operating in conditions such as those mentioned below, engine oil, air filtering, chassis lubrication, greasing and adjustments should be serviced at more frequent intervals than specified in this booklet.

- Mowing in damp or wet conditions.
- Mowing in rough or dusty conditions.
- Mowing in hilly areas under heavy load.

Ensure machine has park brake engaged when attempting to start engine.

Never alter factory setting of maximum engine R.P.M.

CHECK ENGINE OIL LEVEL - Refer to engine owners manual for correct method to check engine oil level.

CHANGE ENGINE OIL - Refer to engine owner's manual for correct method to change engine oil.

CHECK ENGINE AIR CLEANER FOAM PRE-CLEANER - Refer to engine owners manual for correct method to check and service engine air cleaner foam pre-cleaner.

CHECK ENGINE ROTATING SCREEN/FINGER GUARD - Refer to engine owners manual for correct method to check and clean engine rotating screen / debris guard.

CHECK BRAKE OPERATION - Apply Brake pedal and set park brake, if mower can be pushed brake pad, brake spring, or brake linkage may need servicing.

CHECK CLUTCH OPERATION - With pedal in up position check for 3-4mm play at end of link between toggle and adjuster nut

CHECK TYRE PRESSURES - Adjust front and rear tyre pressure to rear (15psi), front (20 psi)

CHECK OPERATION OF SAFETY SWITCHES:-

DISENGAGEMENT SWITCH - Sit on seat with park brake engaged and cutter engaged, (in), attempt to start engine. **Engine should not start.**

SEAT SWITCH

Sit on seat and start engine, engage cutter, and lift weight from seat. **Engine should stop.**

CHECK FOR LOOSE FASTENERS - TORQUE SETTINGS

5/16" UNC BOLT	20Nm (15lbf ft)
5/16" UNF BOLT	23Nm (17lbf ft)
3/8" UNC bolt/nut	36Nm (27lbf ft)
3/8" UNF BOLT	41Nm (30lbf ft)
7/16" UNF BOLT	68Nm (50lbf ft)
6mm BOLT/NUT	9Nm (6lbf ft)
8mm BOLT/NUT	15Nm (11lbf ft)
10mm NUT	44Nm (32lbf ft)
12mm NUT	53Nm (39lbf ft)
20mm NUT	100Nm (74lbf ft)

CHECK BATTERY CONDITION - Raise seat, remove battery clamp and leads (negative lead first). Pull battery out. Remove battery caps and adjust electrolyte levels between upper & lower level marks on battery case using distilled water. Place battery in its recess. Refit leads (positive leads first) with terminal cover.

GREASE STUB AXLES - Clean grease nipple, use grease gun and general-purpose grease to force old grease from top and bottom of front axle bushes. Jack up front of machine if grease is not released from bottom of bush.

TO REMOVE MOWING ATTACHMENT (Side Discharge)

- With the engine off and spark plug removed. Lower mowing attachment fully.

Remove 1 belt guide

2 belt

3 four chain link

4 2 x 12 x 50 bolts at pan adjusters

5 slide mowing attachment out

Reassemble in reverse order

Refit spark plug lead

To adjust mowing attachment lift height

700 mm deck- place lift lever notch marked 7

1000mm deck -place lift lever notch marked 6

Place a 6mm packer under the back of skids to lift rear of mowing attachment

Turn back chain adjusters to the rear until chains are tight and tighten using 18mm set spanner then adjust front by turning adjuster forward

To adjust PTO Belt

Place lift lever in top notch marked 1

Engage engage lever

Using 15/16 set spanner turn nut on pan adjuster back to tension belt until front of cutter attachment starts to lift. Adjust both sides equally then tighten backing nuts

REPLACE BLADES (swing back type & cutter bars) -

Stop engine. Remove spark plug lead. Check blades, blade bolts and nuts, if necessary simply remove the blade bolt and nut using a suitable spanner and replace all blades, bolts and nuts. To preserve balance tighten blade nut to (36-40Nm). Do not over tighten.

CLEANING MACHINE WITH WATER PRESSURE –

Allow machine to cool down (min 2 hrs) before hosing down. Start engine and engage drive and cutting systems to clear water from pulleys and belts. Stop engine and allow machine to dry. Lubricate as required. Do not cover machine with plastic or vinyl type material.

GENUINE SPARE PARTS - Always use Genuine Kingcat Spare Parts. Use of non-genuine Kingcat spare parts will void your warranty.

SAFETY FIRST - The use of mechanical devices can cause injury if incorrect procedures are used.

We are proud that you have purchased a Kingcat product and urge you to follow these instructions to obtain the maximum life for your machine. If in doubt check with your supplier.

Specifications

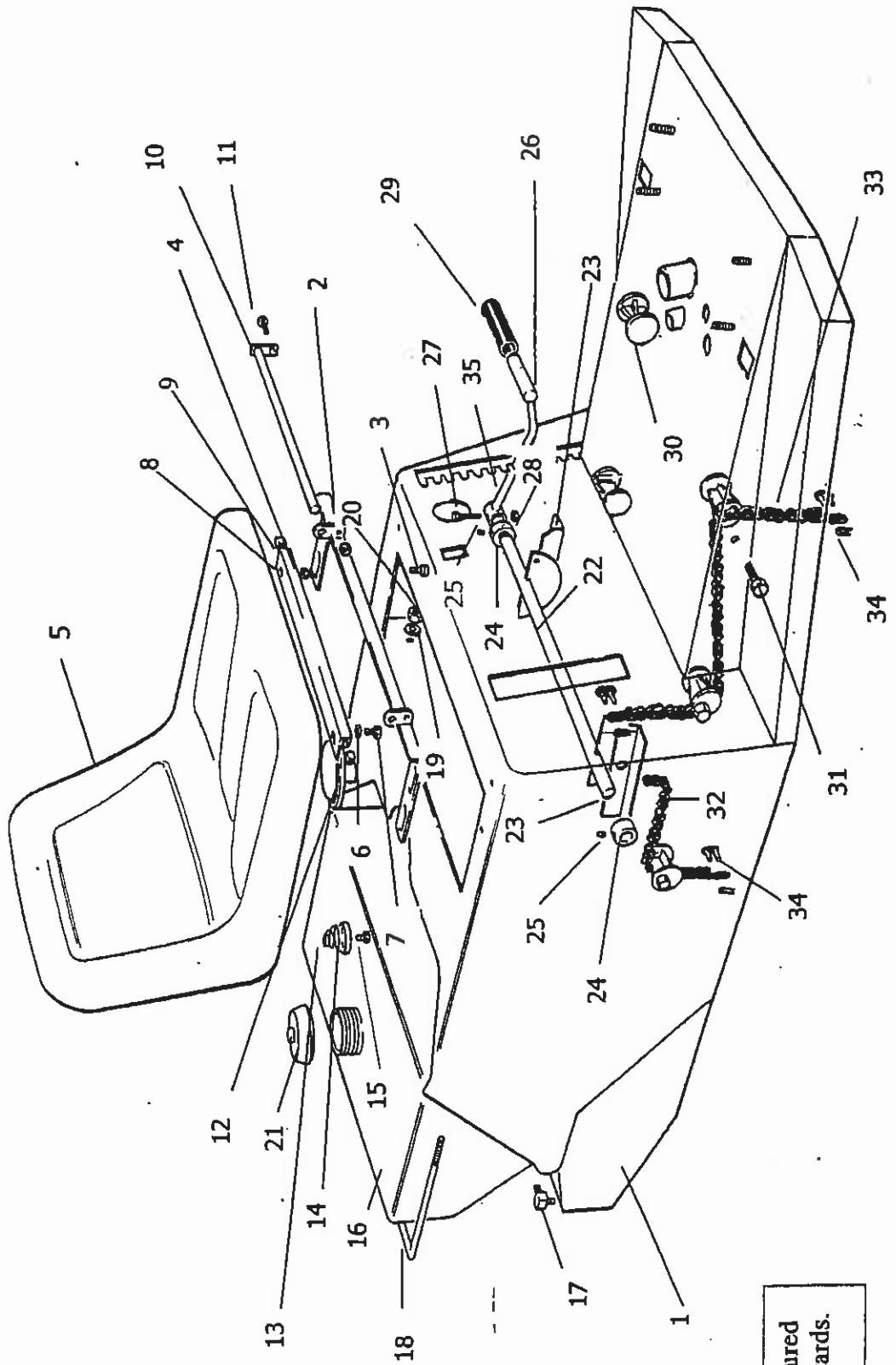
Product Code	CH115700 and CH13700	11.5 HP AND 13HP I/C OHV BRIGGS & STRATTON ENGINE, 5 SPEED PEERLESS TRANSMISSION,-MST205-515D . 3MM PLATE STEEL TRACTOR AND CUTTER DECK,- 700 MM (28")
	CH14.5 1000	14.5HP BRIGGS & STRATTON ENGINE 5 SPEED PEERLESS TRANSMISSION,-MST 205-515D ,3MM PLATE STEEL TRACTOR AND CUTTER DECK.1000MM STANDARD (40" DECK)
	CH15.51000H	15.5 HP OHV AVS BRIGGS & STRATTON ENGINE , HYDROSTATIC TRANSMISSION ,3MM PLATE STEEL TRACTOR AND 1000 MM (40") CUTTER DECK-HEAVY DUTY
	CH161000H	16. HP HONDA ENGINE , HYDROSTATIC TRANSMISSION , 3MM PLATE STEEL TRACTOR AND 1000MM (40")CUTTER DECK- HEAVY DUTY
	CH17.5HP 1200-1000H	17.5HP BRIGGS AND STRATTON ENGINE, HYDROSTATIC TRANSMISSION 3MM PLATE STEEL TRACTOR AND 1200MM(48") OR 1000 MM (40") HEAVY DUTY CUTTING DECK
	CH181200H	18 HP VANGUARD V TWIN BRIGGS & STRATTON ENGINE, HYDROSTATIC TRANSMISSION, 3MM PLATE STEEL TRACTOR AND 1200MM (48") CUTTER DECK-HEAVY DUTY

Dimensions, Mass, Capacity		CH115700 CH130700	CH1451000	CH1551000 CH161000H	CH1751200	CH1751000	CH181200 H
Length	Lawn Mower	1705MM	1705MM	1810MM	1825MM	1825MM	1825MM
Width	Lawn Mower	820MM	820MM	945MM	945MM	945MM	945MM
	Inc Mowing Attachment	925MM	1185MM	1185MM	1405MM	1185MM	1405MM
	Discharge Deflector Up	845MM	1000MM	1000MM	1270MM	1000MM	1270MM
Height		1070MM	1070MM	1095MM	1095MM	1095MM	1095MM
Wheel Base		1130MM	1130MM	1125MM	1125MM	1125MM	1125MM
Front Track [Tyres]	410 / 350 X5	578MM	578MM	635MM	635MM	635MM	635MM
Rear Track [Tyres]	16 / 650 X 8	647MM	647MM	700MM	700MM	700MM	700MM
Dry Mass	Lawn Mower	156 KG	156 KG	173 KG	184 KG	184 KG	190 KG
	Mowing Attachment	35 KG	51 KG	59 KG	77 KG	59 KG	77 KG
	Total(*Inc deflector)	191 KG	207 KG	232 KG	261 KG	243 KG	267 KG
Fuel Tank Capacity		10 LITRES	10 LITRES	10 LITRES	10 LITRES	10 LITRES	10 LITRES
Engine Oil Capacity Including Oil Filter		1.7L	1.7L	1.7L	1.7L	1.7L	1.7L

Mowing Attachment Design & Performance	700MM	1000MM STD	1000MM HEAVY DUTY	1200MM HEAVY DUTY		
Model Number of mowing attachment	750850	755201	755450	755350		
1 Spindle, Right Side Discharge, 2 Swing Back Blades, Cut Width	705mm (28")					
2 Spindle, Right Side Discharge, 2 x one piece blades		1000mm (40")				
2 spindle , right side discharge. Heavy duty greasable spindles 2 X heavy duty blades			1000mm (40")			
3 spindle ,Right side discharge. Heavy duty greasable spindles and blades				1200mm (48")		
Cut Height Range (8 Position) ANTI SCALP ROLLER	10-70mm	10-70mm 4x ADJUST-ABLE				

Transaxle Design		CH115700 CH135700	CH1451000	CH1551000H	CH161000H CH161200H	CH1751000H CH1751200H	CH181200H
Model & Type:-		Manual Geabox MST 205-515D DRIVE THROUGH GEAR TRANSMISSION AND DIFFERENTIAL	Manual Gearbox MST 205-515D DRIVE THROUGH GEAR TRANSMISSION AND DIFFERENTIAL	Hydrostatic PEERLESS LTH 2000-002B Or TUFF TORQUE TTC,K46AE	Hydrostatic PEERLESS LTH2000-002B Or TUFF TORQUE TTC,K46AE	Hydrostatic PEERLESS LTH2000-002B Or TUFF TORQUE TTC,K46AE	Hydrostatic PEERLESS LTH2000-002B Or TUFF TORQUE TTC,K46AE
Maintenance		CH115700/13	CH1451000	CH1551000H	CH161200H	CH161000H	CH181200H
Fuel		Unleaded Petrol, Regular or Premium					
Engine Oil		See engine manual			See engine manual		
Spark Plug		QC12YC	QC12YC	QC12YC	QC12YC	QC12YC	QC12YC
Mower Blades & Fasteners Part No		750543 BLADE 750574 NUT AND BOLT	755185 BLADE 750182 BOLT 750183 SPRING WASHER	755452 BLADE 750135 NUT 750161 BOLT	755145 BLADE 750135 NUT 750161 BOLT	755452 BLADE 750135 NUT 750161 BOLT	755145 BLADE 750135 NUT 750161 BOLT
Drive V Belt Part No PTO		750795 BELT PEERLESS Manual G/Box	750278 BELT PEERLESS Manual G/Box	755107 BELT PEERLESS 755606 Hydro TUFF TORQUE	755107 BELT PEERLESS 755604 Hydro TUFF TORQUE)	755107 BELT PEERLESS 755606 Hydro TUFF TORQUE	755107 BELT PEERLESS 755604 Hydro TUFF ORQUE
V Belt Cutting Deck		NIL	500327	750401	502103	750401	502103
Clutch Belt Part No		750261 BELT PEERLESS	750261 BELT PEERLESS	850114 BELT PEERLESS 755605 TUFF TORQUE	850114 BELT PEERLESS 755605-TUFF TORQUE	850114 BELT PEERLESS 755605-TUFF TORQUE	850114 BELT PEERLESS 755605 TUFF TORQUE
		CH115700 CH130700	CH1451000	CH1551000H	CH161200H	CH161000H	CH181200H
Minimum Turning Diameter (Inside Back Tyre)		Left Turn 455 MM	Right Turn 455 MM	365 MM	365 MM	365 MM	365 MM
		455 MM	500 MM	345 MM	345 MM	345 MM	345 MM

CHASSIS



Manufactured
2000 onwards.

Item	Description	Qty	Part Number	
			15.5HP 16HP 17.5HP	18HP
1	CHASSIS	1	755134	755134
	SEAT INSTALLATION	1	755103	755103
2	BRACKET, Seat Mount	4	750116	750116
3	BOLT	4	750102	750102
4	NUT, Nyloc, M8	1	13059	13059
5	SEAT	2	750157	750157
6	SPRINGWASHER	2	758012	758012
7	BOLT	1	14033	14033
8	MOUNT, Seat	2	AM230	AM230
9	BUSH	1	13015	13015
10	PIN	1	750112	750112
11	BOLT	1	SSL	SSL
12	SWITCH	2	13060	13060
13	SPRING, Seat	2	14128	14128
14	CAP, Seat Spring	2	758012	758012
15	BOLT, Seat Spring	1	751917	751917
	FUEL TANK INSTALLATION	1	500374	500374
16	TANK, Fuel	1	755121	755121
17	FITTING, Brass	2	N/A	N/A
18	BRACKET, Fuel Tank	2	750109	750109
19	WASHER	1	231126	231126
20	NUT	1	751011	751011
21	CAP, Fuel Tank	2	750520	750520
22	SHAFT, Lift	2	750226	750226
23	BRACKET	2	750103	750103
24	COLLAR	2	751015	751015
25	GRUBSCREW	1		
26	LEVER, Deck Height Adjustment			

*Only applicable to models after serial No. 08000008



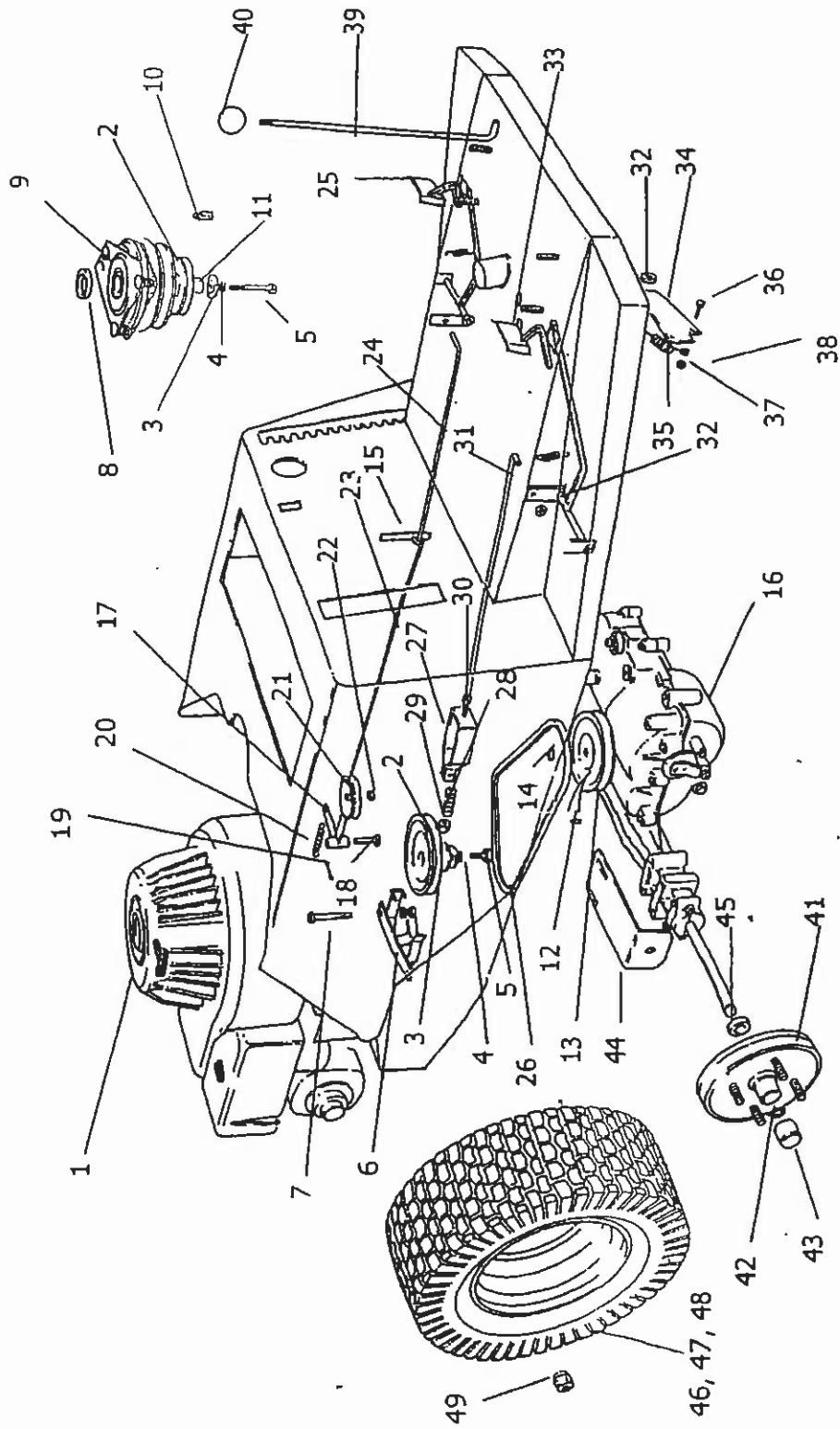
CHEETAH II

CHASSIS (Continued)

Item	Description	Qty	Part Number		
			15.5HP 17.5HP	16HP	18HP
27	BOLT	1	750123		750123
28	NUT	1	750102		750102
29	HANDLE	1	750310		750310
30	ADJUSTER, Chain	6	750545		750545
31	BOLT	6	750166		750166
32	CHAIN, Rear	2	750611		750611
33	CHAIN, Front	2	750610		750610
34	LINK, Chain	4	750320		750320
35	SPRING, Lever Return	1	750384		750384



DRIVE TRAIN



Item	Description	Qty	Part Number	
			15.5HP 16HP 17.5HP	18 HP
	ENGINE INSTALLATION			
1	ENGINE, Briggs & Stratton	1	E16.0	E18.0
2	PULLEY	1	755116	755116
3	WASHER	1	755151	755151
4	SPRINGWASHER	1	750318	750318
5	BOLT	1	755110	755215
6	GUIDE, Belt - Engine Rear	1	755123	755123
7	BOLT	1	750121	750121
8	SPACER	1	755117	751127
9	PTO, CLUTCH/BRAKE	1	232201	232201
10	KEY	1	N/A	755264
11	EXTENSION SHAFT	1	N/A	755194
	GEARBOX INSTALLATION			
12	KEY	1	750405	750405
13	PULLEY	1	751132	751132
14	CIRCLIP	1	750207	750207
15	ARM, Rocker	1	750175	750175
16	GEARBOX	1	750223	750223
	CLUTCH INSTALLATION			
17	ARM ASSEMBLY, Clutch	1	755265	755265
18	PIN	1	755216	755216
19	R-CLIP	1	750324	750324
20	SPRING	1	750386	750386
21	PULLEY, Clutch	1	750316	750316
22	SPACER	1	752099	752099
23	LINK, Rear	1	755161	755161
24	LINK, Clutch Lever	1	750173	750173
25	PEDAL, Clutch	1	751034	751034
26	V-BELT	1	750261	750261



CHEETAH II

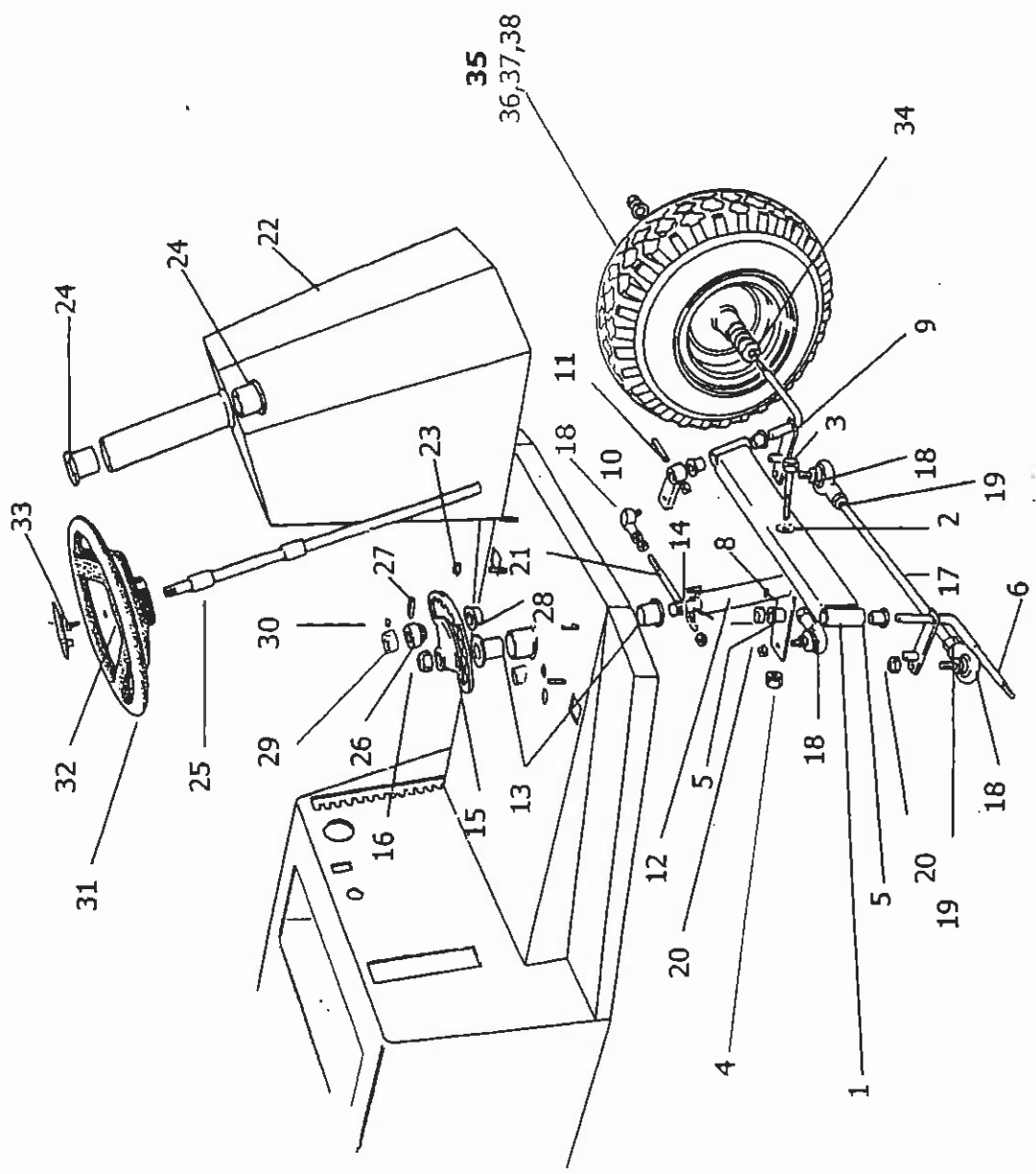
DRIVE TRAIN (Continued)

Item	Description	Qty	Part Number		
			15.5HP 16HP 17.5HP	18 HP	
	BRAKE INSTALLATION				
27	CLEVIS, Brake	1	750512	750512	750512
28	SPRING	1	750389	750389	750389
29	NUT	1	750133	750133	750133
30	NUT	2	750109	750109	750109
31	LINK	1	755161	755161	755161
32	WASHER	21	750203	750203	750203
33	PEDAL, Brake	1	751029	751029	751029
34	BELLCRANK	1	750514	750514	750514
35	SPRING	1	750388	750388	750388
36	BOLT	1	750113	750113	750113
37	NUT	1	750188	750188	750188
38	NUT	1	750101	750101	750101
39	ROD, Handbrake	1	755133	755133	755133
40	Knob, 1 1/4 x 1 1/4	1	750283	750283	750283
	HUB AND WHEEL INSTALLATION				
41	HUB	2	752078	752078	752078
42	CIRCLIP	2	750193	750193	750193
43	CAP, Hub	2	750397	750397	750397
44	WEARPLATE	2	755189	755189	755189
45	SPACER, Hub	2	755384	755384	755384
46	RIM, Wheel	2	502092	502092	502092
47	TUBE	2	750301	750301	750301
48	TYRE	2	750300	750300	750300
49	NUT, Wheel	8	750393	750393	750393





FRONT AXLE AND STEERING



Manufactured
2000 onwards.

FRONT AXLE AND STEERING

Item	Description	Qty	Part Number	
			15.5HP 16HP 17.5HP	18 HP
	FRONT AXLE INSTALLATION			
1	BEAM, Front Axle	1	751063	751063
2	BUSH	1	750326	750326
3	BOLT	1	750162	750162
4	NUT, M16, Nyloc	1	750128	750128
5	BUSH	4	750250	750250
6	STUB AXLE, RH	1	755119	755119
7	COLLAR, Retaining	1	500266	500266
8	GRUBSCREW	1	750103	750103
9	STUB AXLE, LH	1	755118	755118
10	ARM, Steering	1	755120	755120
11	PIN, Tension	1	750249	750249
	STEERING INSTALLATION			
12	SHAFT, Steering, Short	1	750774	750774
13	BUSH	2	750323	750323
14	KEY, Woodruff, 3/16" X 3/4"	1	750405	750405
15	QUADRANT, Steering	1	750775	750775
16	NUT, Nyloc, M16	1	750128	750128
17	TIE ROD	1	758056	758056
18	END, Tie Rod	4	750347	750347
19	NUT, Locking	4	750189	750189
20	NUT, Nyloc	4	750394	750394
21	DRAG LINK	1	750142	750142
22	COWL, Steering	1	755104	755104
23	NUT	4	750129	750129
24	BUSH	2	005478	005478
25	SHAFT, Steering, Long	1	755101	755101
26	PINION, Steering	1	750777	750777
27	PIN, Tension	1	754119	754119



CHEETAH II

FRONT AXLE AND STEERING (Continued)

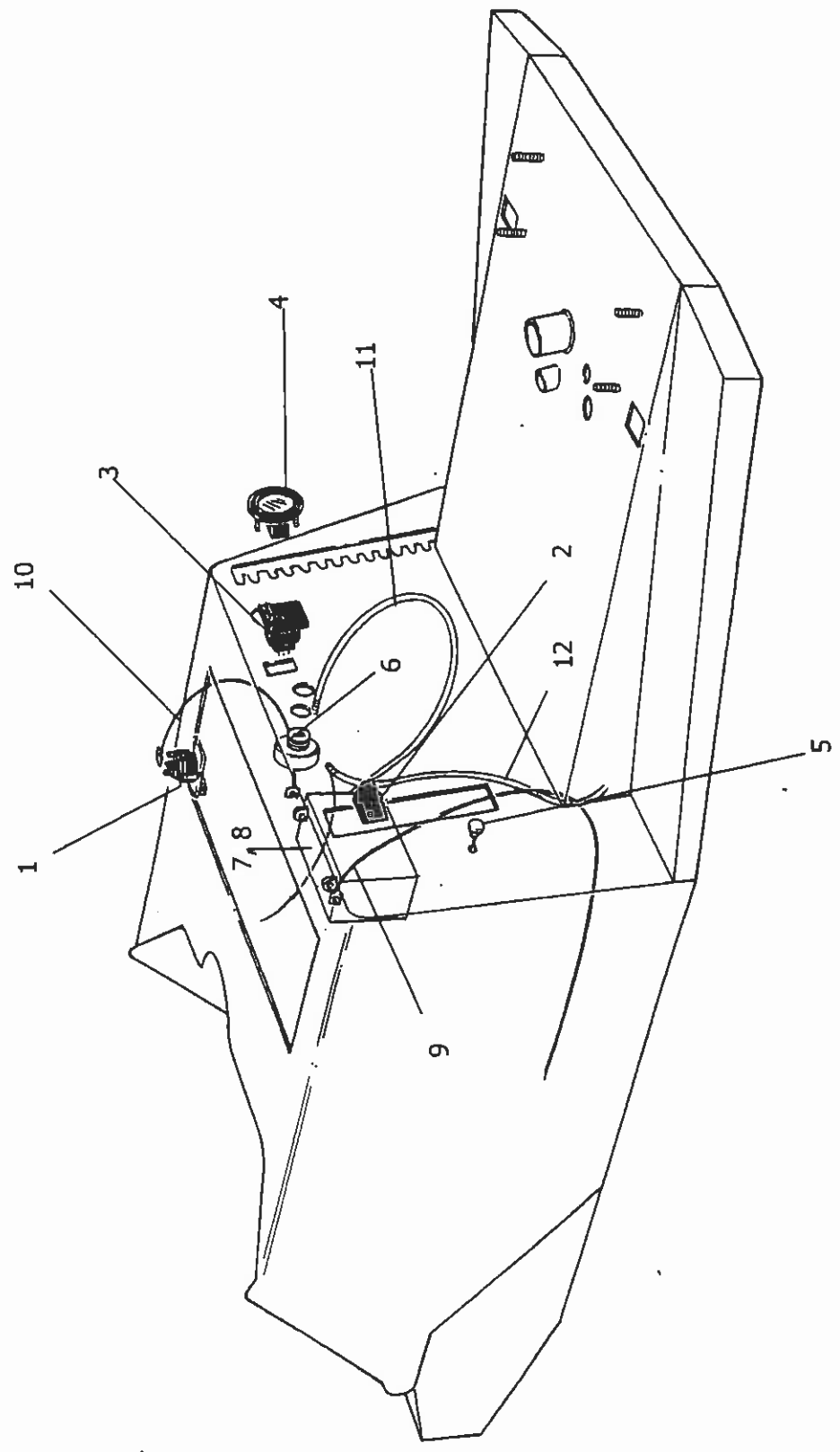
Item	Description	Qty	Part Number		
			15.5HP 16HP 17.5HP		18HP
28	BUSH	1	750241		750241
29	COLLAR	1	500266		500266
30	GRUBSCREW	1	750103		750103
31	STEERING WHEEL including Cap	1	SW14		SW14
32	WASHER	1	WO52003		WO52003
33	BOLT	1	758012		758012
34	BEARING, Wheel	4	BB205215N		BB205215N
35	FRONT WHEEL ASSEMBLY	2	750304		750304
36	RIM, Wheel (Note: 11.5 & 13 hp models - 2 halves per wheel)	2	755212		755212
37	TUBE	2	755214		755214
38	TYRE	2	755213		755213



CHEETAH II



ENGINE CONTROLS AND ELECTRICAL INSTALLATION



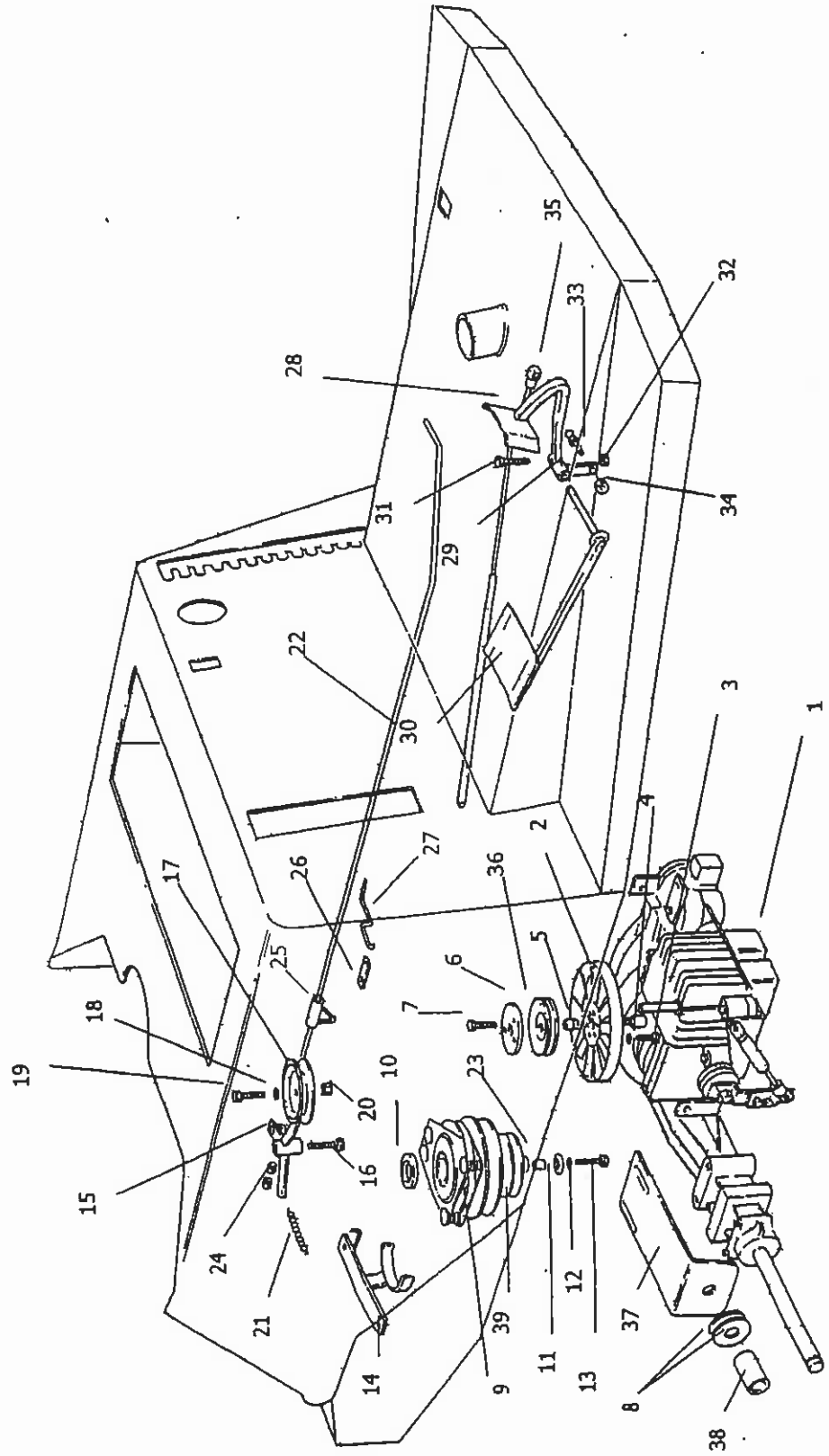
ENGINE CONTROLS AND ELECTRICAL INSTALLATION

Item	Description	Qty	Part Number	
			15.5HP 16HP 17.5HP	18 HP
	ENGINE CONTROLS INSTALLATION			
1	SWITCH, Solenoid	1	AM159	AM159
2	LEVER ASSEMBLY	1	AM088	AM088
3	SWITCH, Mowing Attachment	1	500148	500148
4	HOURMETER	1	AM211	AM211
5	CONTROL, Choke	1	N/A	750406
6	SWITCH, Ignition	1	13125	13125
	ELECTRICAL INSTALLATION			
7	Battery	1	AM109	AM109
8	CLAMP, Battery (Kit)	1	755159	755159
9	LEAD, Battery (+)	1	755113	755113
10	LEAD, Battery (-)	1	755114	755114
11	WIRING, Neutral	1	N/A	N/A
12	LOOM	1	755112	755112





HYDROSTATIC TRANSMISSION PARTS



HYDROSTATIC TRANSMISSION PARTS

Item	Description	Qty	Part Number	
			15.5HP,16.0 HP,17.5 HP	18 HP
1	TRANSMISSION, Hydrostatic	1	755210	755210
2	FAN, Cooling	1	755268	755268
3	BOLT	3	750111	750111
4	WASHER	3	750160	750160
5	COLLAR	1	755245	755245
6	RETAINER	1	755244	755244
7	BOLT	3	750314	750314
8	WASHER	4	500491	500491
9	CLUTCH ASSEMBLY	1	232201	232201
10	SPACER	1	755117	751127
11	WASHER	1	755151	755151
12	WASHER	1	750318	750318
13	BOLT	1	755110	755215
14	GUARD, Belt	1	755234	755234
15	ARM, Belt Tensioner	1	755235	755235
16	PIN	1	755236	755236
17	PULLEY, Belt Tensioner	1	750316	750316
18	WASHER	1	750153	750153
19	BOLT	1	850036	850036
20	NUT, Nyloc	1	750135	750135
21	SPRING	1	750386	750386
22	LINK	1	755227	755227
23	SHAFT, Extension	1	NA	755194
24	NUT, Lock	1	750133	750133
25	SPRING ANCHOR, Adjustable	1	755224	755224
26	ARM	1	755266	755266
27	LEVER	1	755239	755239
28	PEDAL, Forward	1	755217	755217

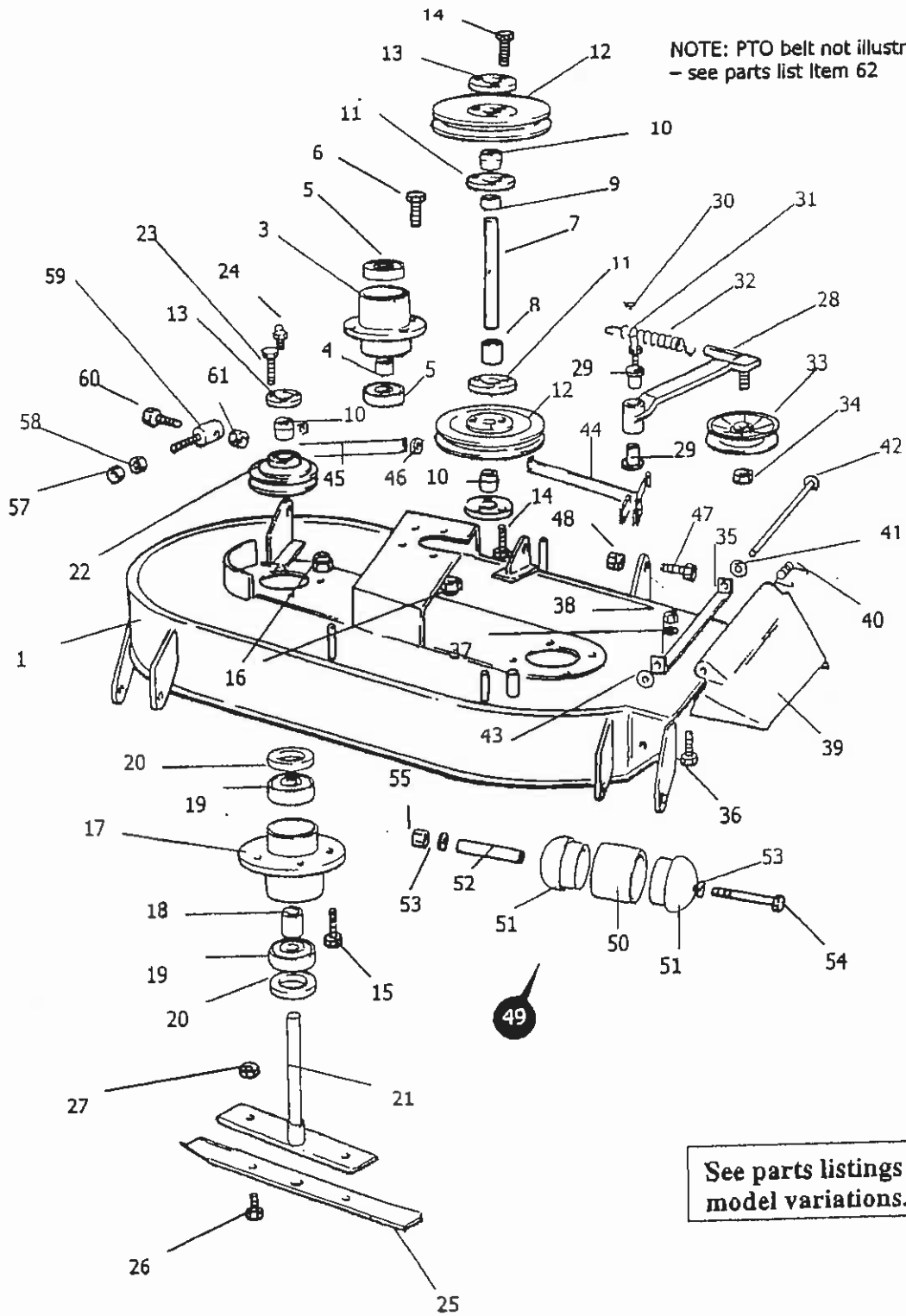


CHEETAH II

HYDROSTATIC TRANSMISSION PARTS (Continued)

Item	Description	Qty	Part Number	
			15.5HP, 16.0 HP / 17.5HP	18 HP
29	BUSH	2	750241	750241
30	PEDAL, Reverse	1	755221	755221
31	BOLT	1	750121	750121
32	NUT, Nyloc	1	750102	750102
33	ROD END	1	750347	750347
34	NUT	1	750394	750394
35	LINK	1	755228	750394
36	PULLEY, Transmission	1	755243	755243
37	WEAR PLATE	2	755189	755189
38	SPACER, Hub	2	755384	755384
39	PULLEY, Engine	1	755233	755233
40	BELT, Drive (not illustrated)	1	850114	850114

MOWER DECK - 1000mm



MOWER DECK - 1000mm

			1000 Standard Deck P/N 755201		1000 Mulch Deck P/N 755202		1000 Heavy Duty Deck P/N 755450
Item	Description	Qty	Part No	Qty	Part No	Qty	Part No
1	CHASSIS, 1000 Deck	1	755182	1	755451	1	755451
2	BELT (not illustrated)	1	500327	1	500327	1	750401
3	HOUSING, Centre Spindle	1	AM242	1	AM242	1	AM242
4	SPACER, Bearing	1	755191	1	755191	1	755191
5	BEARING	2	750308	2	750308	2	750308
6	BOLT	4	750161	4	750161	4	750266
7	SHAFT	1	755188	1	755188	1	755188
8	SPACER, Bottom	1	755186	1	755186	1	755453
9	SPACER, Top	1	755187	1	755187	1	755187
10	COLLAR	2	750686	2	750686	4	750686
11	RETAINER, Threaded	2	751068	2	751068	2	751068
12	PULLEY	2	850137	2	850137	2	850137
13	RETAINER, Drilled	4	N/A		N/A	2	751067
14	BOLT, 1 3/4" X 1/4" UNC	6	750108	6	750108	6	750108
15	BOLT	8	750161	8	750161	8	750266
16	NUT, Nyloc	8	750135	8	750135	8	750127
17	HOUSING, Spindle	2	AM242	2	AM242	2	755158
18	SPACER	2	AM021	2	AM021	2	755158
19	BEARING	4	BB205215N	4	BB205215N	4	BB256217N
20	SEAL		N/A		N/A	4	755211
21	SPINDLE	2	755269	2	755269	2	755249
22	PULLEY	2	AM326	2	AM326	2	751205
23	HARDWARE, Pulley Retainer	1	758153	1	758153	6	750110
24	GREASE NIPPLE		N/A		N/A	2	750219
25	BLADE	2	755185	2	755382	2	755452
26	BOLT	4	750161	4	750161	4	750161
27	NUT, Nyloc	4	750135	4	750135	4	750135
28	ARM, Tension	1	755184	1	755184	1	755184
29	BUSH	2	750241	2	750241	2	750241
30	CIRCLIP, External	1	750207	1	750207	1	750207
31	GREASE NIPPLE	1	750216	1	750216	1	750216
32	SPRING, Tension	1	AM040	1	AM040	1	AM040
33	PULLEY ASSEMBLY	1	PIFBB02	1	PIFBB02	1	PIFBB02
34	NUT, Nyloc	1	750135	1	750135	1	750135
35	BRACKET	1	AM052E1	1	AM052E1	1	AM052E1
36	BOLT	2	750112	2	750112	2	750112
37	WASHER, Flat	2	750160	2	750160	2	750160
38	NUT, Nyloc	2	750101	2	750101	2	750101
39	DEFLECTOR	1	15013	1	15013	1	15013
40	SPRING	1	AM272	1	AM272	1	AM272
41	WASHER, Flat	1	750160	1	750160	1	750160
42	ROD	1	AM273	1	AM273	1	AM273
43	LOCKWASHER	1	750203	1	750203	1	750203
44	ARM, RH	1	755140	1	755140	1	755140
45	ARM, LH	1	755139	1	755139	1	755139
46	WASHER	1	750609	1	750609	1	750609
47	BOLT	2	750140	2	750140	2	750140
48	NUT, Nyloc	2	750104	2	750104	2	750104
49	ROLLER ASSEMBLY, Complete	4	502285	4	502285	4	502285
50	Tube, Roller	1	502095	1	502095	1	502095
51	Cap	2	502146	2	502146	2	502146



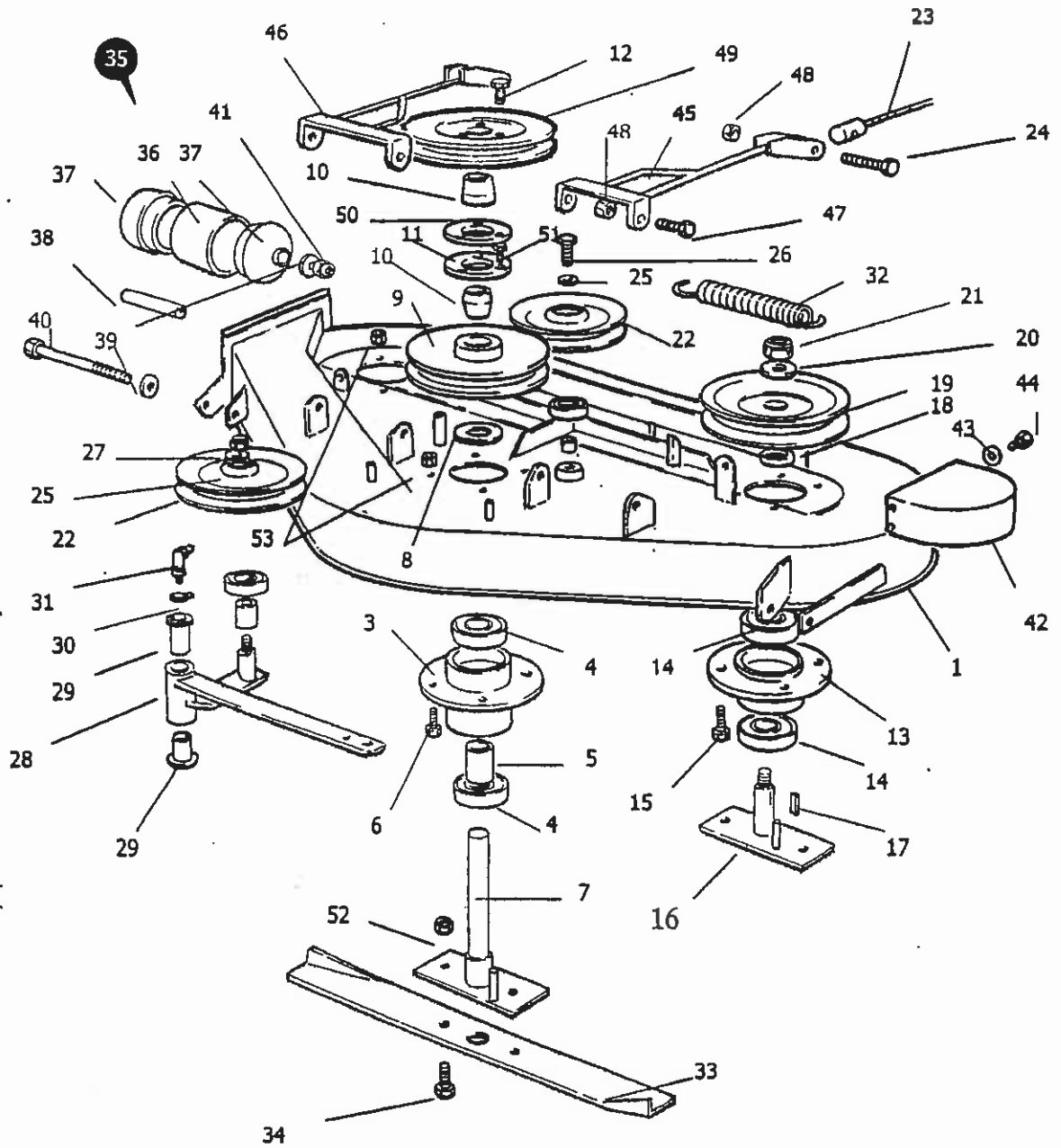
MOWER DECK – 1000mm (Continued)

			1000 Standard Deck P/N 755201		1000 Mulch Deck P/N 755202		1000 Heavy Duty Deck P/N 755450
Item	Description	Qty	Part No	Qty	Part No	Qty	Part No
52	Shaft	1	502164	1	502164	1	502164
53	Washer, Flat	2	750153	2	750153	2	750153
54	Bolt, M10 X 120	1	502143	1	502143	1	502143
55	Nut, Nyloc, M10	1	750127	1	750127	1	750127
56	WASHER, Pulley	1	850151	1	850151		N/A
57	NUT, Nyloc	2	750128	2	750128	2	750128
58	NUT, Hex	2	750209	2	750209	2	750209
59	ADJUSTER, Pan	2	751049	2	751049	2	751049
60	BOLT	2	750124	2	750124	2	750124
61	NUT, Nyloc	2	750104	2	750104	2	750104
62	BELT, PTO (Englne to Deck)	1	750278	1	750278	1	755107



MOWER DECK - 1200mm

NOTE: PTO belt not illustrated - see parts list item 54



MOWER DECK - 1200mm

Item	Description	1200 DECK P/N 755200 up to Serial No 0602003		18 hp		1200 H/DUTY DECK P/N 755350	
		Qty	Part No	Qty	Part No	Qty	Part No
1	CHASSIS - 1200 Deck	1	755135	1	755135D	1	755251
2	BELT (not Illustrated)	1	502103	1	502103	1	502103
3	HOUSING, Centre Spindle	1	755146	1	755146	1	755198
4	BEARING	2	BB256217N	2	BB256217N	2	BB256217N
5	SPACER	1	755158	1	755158	1	755158
6	BOLT	4	750161	4	750161	4	750266
7	SPINDLE	1	755136	1	755173	1	755248
8	WASHER, Spacer	1	850120	1	850120	1	755208
9	PULLEY	1	755138	1	755138	1	751205
10	COLLAR	1	750686	1	750686	4	750686
11	RETAINER, Drilled	1	751067	1	751067	3	751067
12	BOLT, 1/4" UNC X 1 3/4"	3	750108	3	750108	9	750108
13	HOUSING, Spindle	2	AM242	2	AM242	2	755198
14	BEARING	6	BB205215N	6	BB205215N		BB256217N
15	BOLT	3	750161	3	750161	3	750266
16	SPINDLE	2	755137	2	755172	2	755249
17	KEY, Pulley	2	755174	2	755174		NA
18	SPACER	2	755143	2	755143	2	755208
19	PULLEY	2	AM326	2	AM326	2	751205
20	WASHER, Flat	2	850151	2	850151		NA
21	NUT, Nyloc, M16	2	758153	2	758153		NA
22	PULLEY	2	850117	2	850117	2	850117
23	ADJUSTER, Pan	2	750149	2	750149	2	750149
24	BOLT, M12 X 50	2	750124	2	750124	2	750124
25	WASHER	2	750153	2	750153	2	750153
26	BOLT	1	750161	1	750161	1	750161
27	NUT, Nyloc	1	750135	1	750135	1	750135
28	ARM, Tension	1	755141	1	755141	1	755141
29	BUSH	2	750241	2	750241	2	750241
30	CIRCLIP, External	1	750207	1	750207	1	750207
31	GREASE NIPPLE	1	750216	1	750216	1	750216
32	SPRING, Tension	1	AM040	1	AM040	1	AM040
33	BLADE	3	755145	3	755145	3	755145
34	BOLT	6	750161	6	750161	6	750161
35	ROLLER ASSEMBLY (Complete)	4	502285	4	502285	4	502285
36	TUBE, Roller	1	502095	1	502095	1	502095
37	CAP	2	502146	2	502146	2	502146
38	SHAFT	1	502164	1	502164	1	502164
39	WASHER, Flat	2	750153	2	750153	2	750153
40	BOLT, M10 X 120	1	502143	1	502143	1	502143
41	NUT, Nyloc, M10	1	750127	1	750127	1	750127
42	GUARD, Pulley	1	755142	1	755142	1	755142
43	WASHER, Flat	8	750160	8	750160	8	750160
44	BOLT, M6 X 16	8	750112	8	750112	8	750112
45	ARM, LH	1	755139	1	755139	1	755139
46	ARM, RH	1	755140	1	755140	1	755140
47	BOLT, M12 X 25	4	750140	4	750140	2	750140



MOWER DECK – 1200mm (CONTINUED)

Item	Description	1200 DECK P/N 755200 up to Serial No 0602003		18 hp		1200 H/DUTY DECK P/N 755350	
		Qty	Part No	Qty	Part No	Qty	Part No
49	PULLEY, Input	1	755148	1	755148	1	755148
50	RETAINER, Threaded	1	751068	1	751068	1	751068
51	BOLT ¼" UNC X 1"	3	750110	3	750110	9	750110
52	NUT	6	750135	6	750135	6	750135
53	NUT	12	750135	12	750135	12	750127
54	BELT, PTO (Engine to Deck)	1	755107	1	755107	1	755107

