

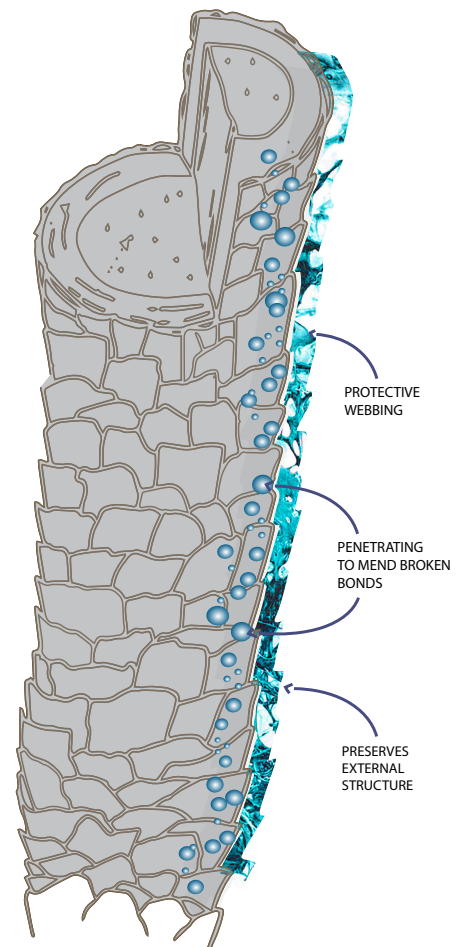
## WHAT IS FILLERPLEX(EBR) & HOW DOES IT WORK?

FillerPlex(EBR) is a single step Enzymatic Bond Reconstructor (EBR) with dual process action. A plex treatment working from the OUTSIDE to INSIDE by surrounding the hair fibres with a protective webbing structure to mend broken bonds during a chemical service.

FillerPlex(EBR) penetrates and reconstructs the bond fibres from the outside in, providing elasticity and strength, even after just ONE application. FillerPlex(EBR) protects and preserves, keeping the internal structure healthy and resulting in longer lasting colour.

One named miracle ingredient reinforcing FillerPlex(EBR) is Hydrolyzed Vegetable Protein pf-Propyl Silanetriol. A revitalising and fortifying protein complex seeking out damaged bonds, increasing tensile, withstanding chemical stresses, and preventing cuticle abrasion.

Unlike 'others', FillerPlex(EBR) does NOT require any follow up maintenance treatments at home and does NOT affect any service processing times or results.



## WHATS IN IT?

Other than the secretly formulated superpowers. FillerPlex(EBR), is vegan and supplemented with the following active nutrients keeping hair in tip top condition:

**HYALURONIC ACID** - Moisture rich humectant gel-like cushioning molecule. Manages hair hydration retention, an essential nourishment in the restoration of the hair structure, leaving hair soft, smooth and silky.

**100% ITALIAN ORGANIC CHESTNUT EXTRACT** - This active ingredient repairs the hair surface from damaging treatments. It overlays the hair follicle on the outside retaining the moisture on the inside.

**HEMP OIL** - Prevents the absorption of excess water and assists in the safeguarding from hair breakage.



**Permanent Colour Service 10:1**  
10ml/.3oz colour + 1ml/.03oz FillerPlex<sup>(EBR)</sup>

**Example**  
60ml/2oz Couture Silk colour + 6ml/.2oz FillerPlex<sup>(EBR)</sup>

**Alpine Blonda 7 & 9 Service 10:2**  
10gr/.34oz lightener + 2ml/.07oz FillerPlex<sup>(EBR)</sup>

**Example**  
40gr/1.4oz Alpine Blonda + 8ml/.27oz FillerPlex<sup>(EBR)</sup>

## EXPERT TIPS

Accurate measuring is key for correct usage of this product.

**Always measure the quantity being dispensed into the mix using Leyton House digital scales.**

**NOTE:** No need to add to Demi Permanent as no damage occurs when using this colour collection.

## CARE SERVICE

For added strength and resilience between colour services.

Mix 10ml/.3oz FillerPlex<sup>(EBR)</sup> + 100ml/3.4oz of water. Mix thoroughly (easier to mix and shake well in a bottle)

1. Apply to dry hair section by section
2. Comb through ensuring perfect distribution of product
3. Process for 5 minutes - DO NOT RINSE
4. Apply Rhassoul Hair Recovery Masque and leave in for 10 minutes
5. Rinse thoroughly and then shampoo with Rhassoul Colour Care Shampoo (no conditioner)

## FILLERPLEX<sup>(EBR)</sup> & CURLY HAIR

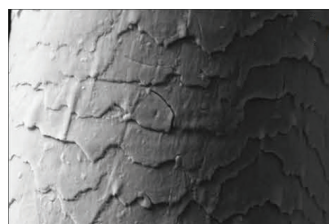
Fills the porosity of the hair structure making it less porous absorbs less water and less reactive to humidity. Gives frizz reduction and the longer you use the less frizz you'll get.



Before

After

Without FillerPlex<sup>(EBR)</sup>



With FillerPlex<sup>(EBR)</sup>

