

Get Exclusive with LUXFURNI

LUXFURNI wants you to enjoy the best possible experience. We offer a wide variety of lighting and organizing options to suit your needs. Follow us on social media or sign up for our newsletter to stay up-to-date on the latest trends and to receive updates on our collection.

Extended Warranty

To find out if you are eligible for an extended warranty, please register your product.

 <https://www.luxfurni.com/pages/warranty-register>

 info@luxfurni.com  +1 424-512-2022

Drop by and say hi! We'd love to meet you and show you around.



! Warranty Coverage

Our products are covered by a limited warranty against manufacturing defects and malfunctions. To be eligible for warranty service, please keep your receipt and follow the instructions in the owner's manual.

Designed by Professionals, for Professionals

From Humble Beginnings to Industry Leaders

LUXFURNI's story is one of passion and purpose. Our founder, Stella Karen, had a deep love for beautiful and organized spaces, and she realized that there was a gap in the market when it came to jewelry storage solutions.

She was determined to create something that would not only help people keep their jewelry organized but also enhance the beauty of their spaces.

But Stella didn't want to create just any jewelry storage solution. She wanted to create something that was both functional and beautiful, something that would stand the test of time.

LUXFURNI's first products were jewelry cabinets and it later expanded to professional makeup mirrors. From the very beginning, LUXFURNI has been committed to using the highest quality materials and craftsmanship to create products that last. We believe in creating sustainable, long-lasting solutions that will not only benefit our customers but also the environment.

As we grew, we realized that we could do more than just create beautiful makeup mirrors and functional jewelry storage solutions. We could also make a positive impact on the world. In 2011, LUXFURNI made a commitment to sustainability, using eco-friendly materials and processes whenever possible.

We also believe in giving back to our community. That's why we have partnered with organizations that share our values and are committed to making a positive impact on the world.

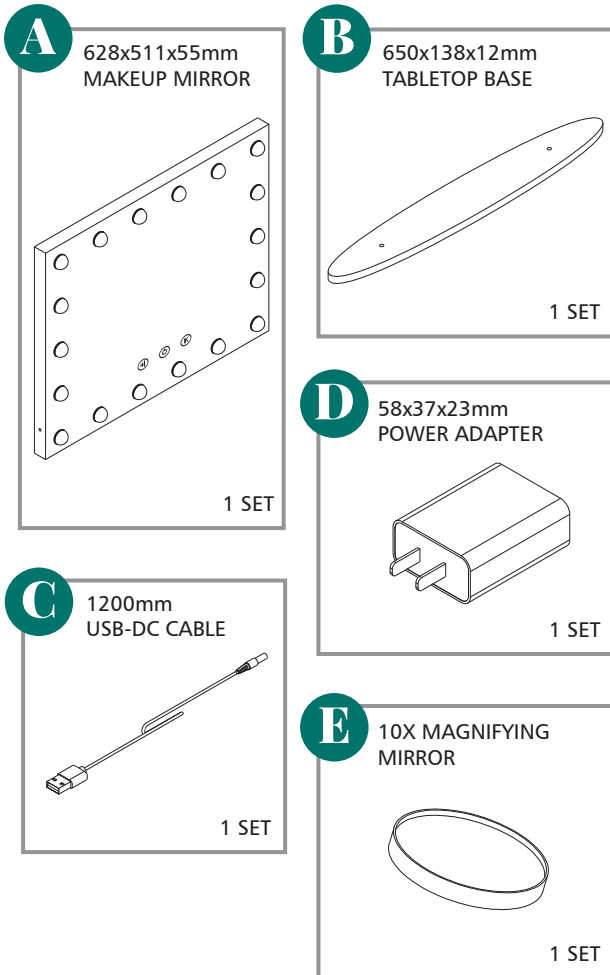
Designed by Professionals, for Professionals

Important Reminders

Before you begin, please read the following important reminders:

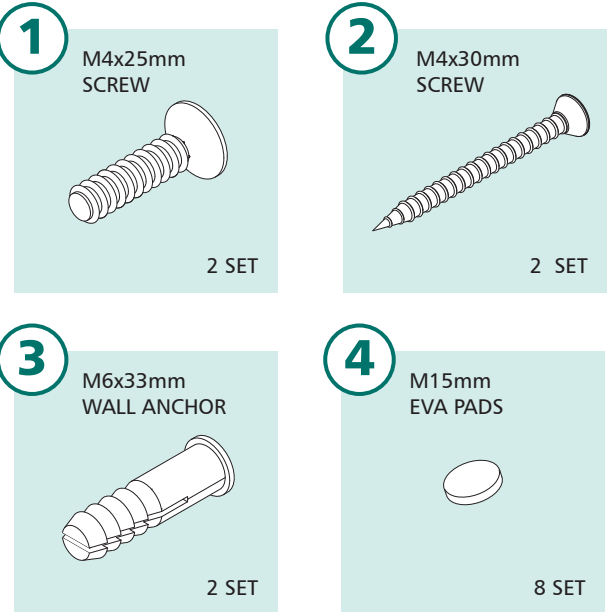
- Use the product only for its intended purpose.
- If you are transferring the product to a third party, please include the instructions and safety warnings.
- If you have any questions or difficulties during assembly that are not addressed in the instructions, please contact the manufacturer(LUXFURNI).
- This work is copyrighted by LUXFURNI. No part of it may be reproduced without written permission from LUXFURNI.
- The product is intended for use as a makeup mirror. Do not use it for any other purpose.
- The seller is not responsible for any damage caused by incorrect assembly or improper use.
- Before using, please check that the mirror body is intact and that all accessories are present.
- Follow the assembly steps shown in the diagram to position and adjust the parts. Then, gradually tighten all screws (do not overtighten).
- For optimal performance, tighten bolts and screws every 90 days.

Parts & Components



Designed by Professionals, for Professionals

Hardware



Designed by Professionals, for Professionals

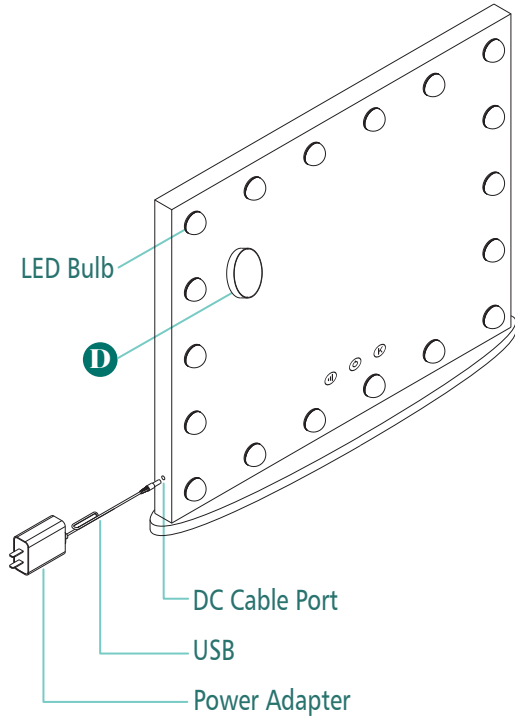


Starry7xl LED Makeup Mirror

Assembly INSTRUCTIONS

Designed by Professionals, for Professionals

Follow the assembly steps shown in the diagram below



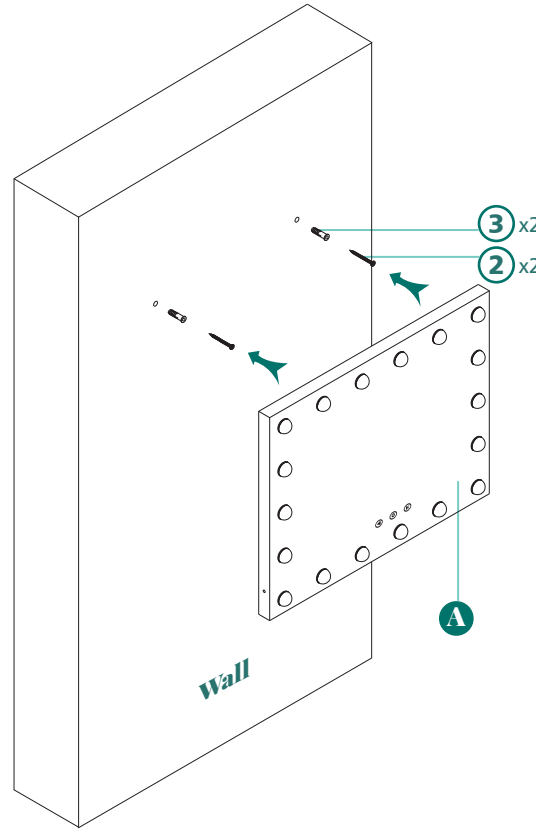
Wall-Mounted Assembly

STEP

1

Mark

- Determine your desired preference while sitting down on a chair
- Mark the wall and drill two holes
- Insert the wall anchors before the screws
- Make sure the screws are securely fastened before mounting the mirror



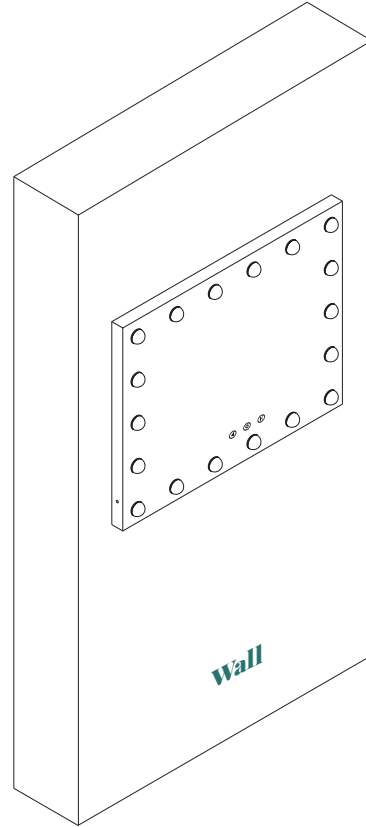
Wall-Mounted Assembly

STEP

2

Mount

- Carefully mount the mirror towards the screws on the wall
- Make sure that it is properly aligned before using



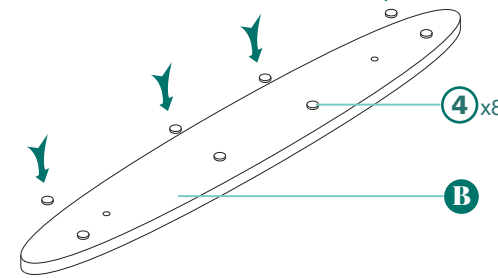
Tabletop Assembly

STEP

1

Base Stand

- The front side of the base must face the front side direction of the mirror

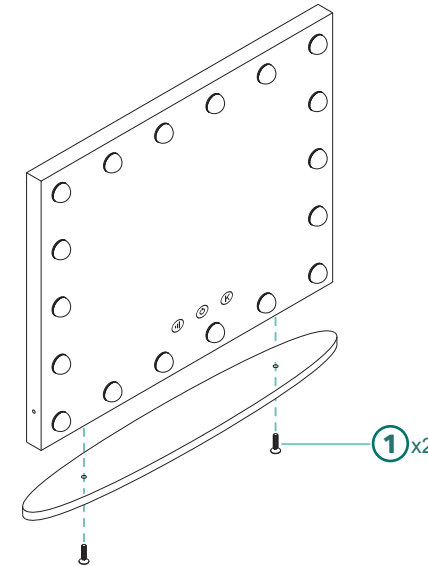


STEP

2

Tabletop Setup

- Make sure that all parts are complete
- Mount the mirror to the base making sure it is properly aligned and securely fastened



User's Guide

Smart Touch Controls

- ⏻ Power On/off: Tap to activate
- 🔊 Brightness: Tap to increase/ decrease
- Ⓚ Color Temperature: Tap to shift to different temperatures
- Disconnect from the power source for 10 seconds and reapply power to reset the chip

Additional Facts



Customer Care

Got a question about your Luxfurni product?

Our customer care team is here to help! We're committed to providing you with prompt and helpful assistance, so don't hesitate to reach out to us at service@lux-furni.com

Looking to declutter your jewelry and pamper yourself at the same time?

Check out this jewelry cabinet!



Drop by and say hi! We'd love to meet you and show you around.

