

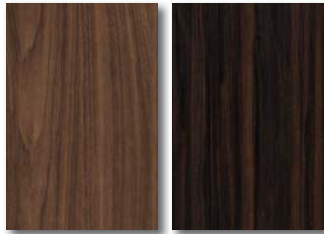
Finiture e
materiali

*Finishes and
materials*

FINISHES AND COLOURS

The direction of the grain is:
- vertical on RAYS fronts and side panels
- horizontal on headboards, fronts and tops

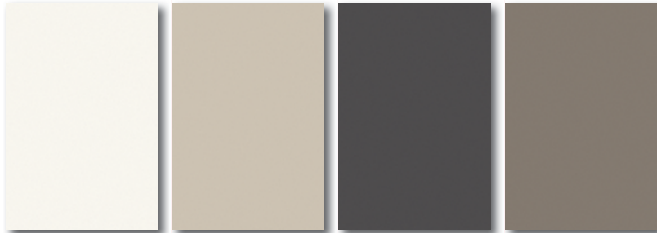
ECO-WOOD



72
Noce

73
Olmo termotrattato

SUPER-MATT



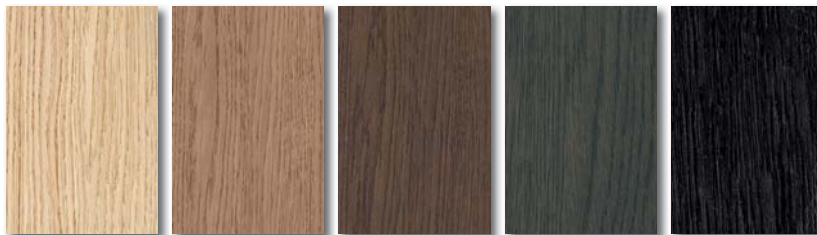
37
Bianco seta

35
Tortora seta

12
Quarzo seta

31
Ecrù seta

VENEERS



N04
Rovere chiaro

N02
Rovere miele

N01
Rovere terra

N06
Rovere grigio

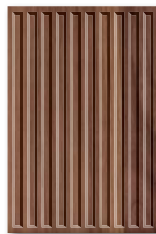
N05
Rovere carbone

NOCE CANALETTO



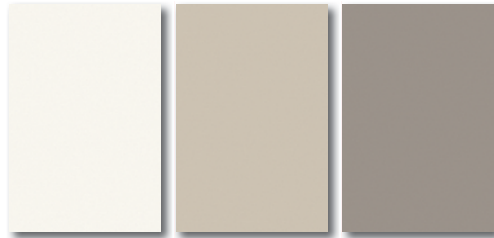
N03
Noce canaletto

RAYS



N03
Noce canaletto

**STANDARD
WATER-BASED
MATT
LACQUERED**



300
Bianco

303
Tortora

333
Sabbia

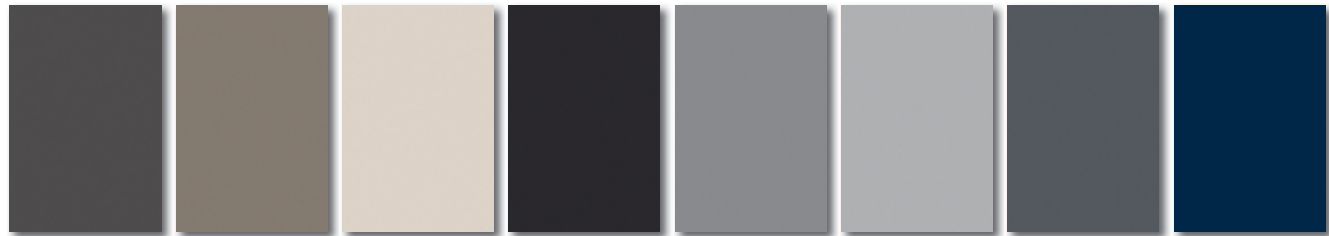
RAYS



Matt lacquered
in all finishes

RAYS fronts are produced on a pressed wood substrate. The nature of the material means the inside of the etched groove is inevitably not going to be entirely smooth, hence a slightly uneven effect on the surface of the etched groove should be seen as a distinctive feature of the lacquered door.

**COLOURED
WATER-BASED
MATT
LACQUERED**



310
Quarzo

331
Visone

351
Magnolia

318
Nero grafite

341
Cenere

330
Grigio

352
Piombo

353
Blu notte



362
Laguna

355
Ginepro

324
Fango

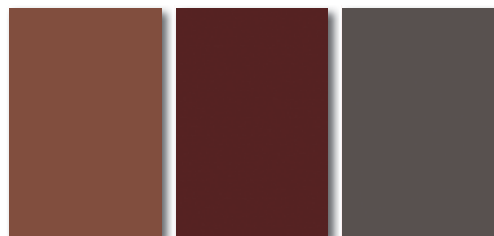
354
Tiglio

346
Foresta

342
Foglia

314
Corda

359
Ambra



360
Cotto

361
Mogano

358
Castagna

RAYS

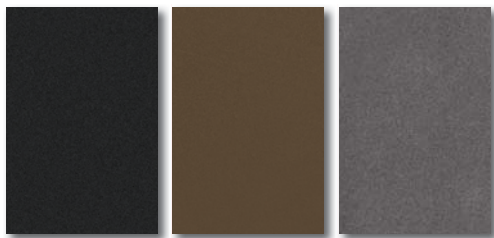


Matt lacquered
in all finishes

RAYS fronts are produced on a pressed wood substrate. The nature of the material means the inside of the etched groove is inevitably not going to be entirely smooth, hence a slightly uneven effect on the surface of the etched groove should be seen as a distinctive feature of the lacquered door.

FINISHES AND COLOURS

OXIDIZED LACQUERED



306 Bronze
304 Light bronze
305 Pewter

The oxidized lacquered finish is composed of paint containing metal crystals. Any small shiny particles present on large surfaces should be seen as a distinctive feature of the finish.

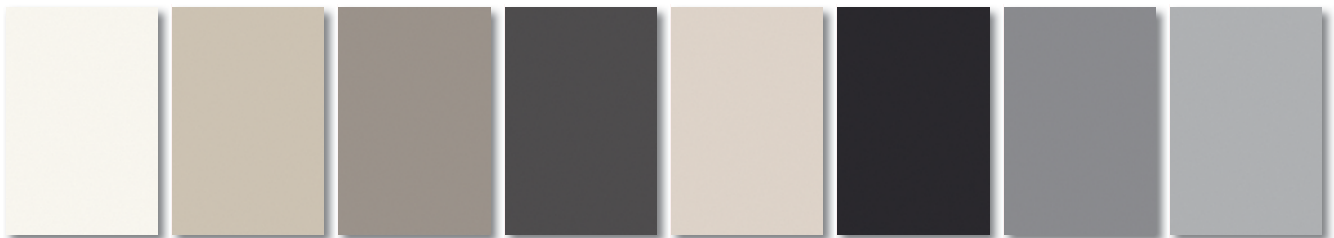
RAYS



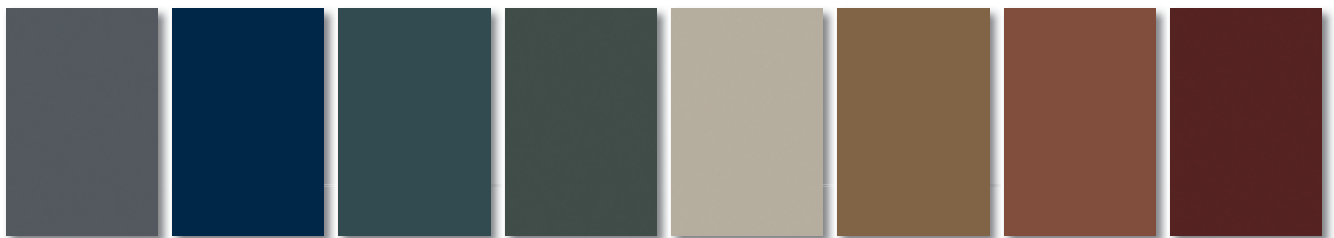
Oxidized lacquered in all finishes

RAYS fronts are produced on a pressed wood substrate. The nature of the material means the inside of the etched groove is inevitably not going to be entirely smooth, hence a slightly uneven effect on the surface of the etched groove should be seen as a distinctive feature of the lacquered door.

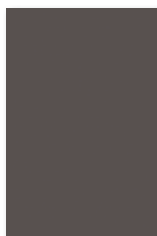
GLOSS LACQUERED



400 Bianco
403 Tortora
433 Sabbia
410 Quarzo
451 Magnolia
418 Nero grafite
441 Cenere
430 Grigio

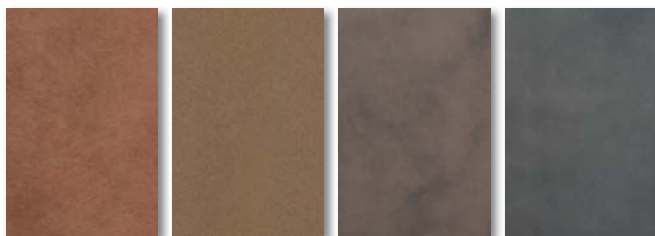


452 Piombo
453 Blu notte
462 Laguna
455 Ginepro
414 Corda
459 Ambra
460 Cotto
461 Mogano



458 Castagna

METAL LACQUERED



307 Copper
308 Brass
309 Brown
302 Tin

Finishes available for metal items only.

The metal lacquered finish serves up a special coating technique involving various coats of paint applied entirely by hand that are combined to achieve a metallic effect. This is a handcrafted product, and is therefore unique, meaning any differences in colour or in gloss level on different surfaces should be seen as a distinctive feature of the finish.

LIGHT STONE, MARBLE AND LAVA STONE

LIGHT STONE

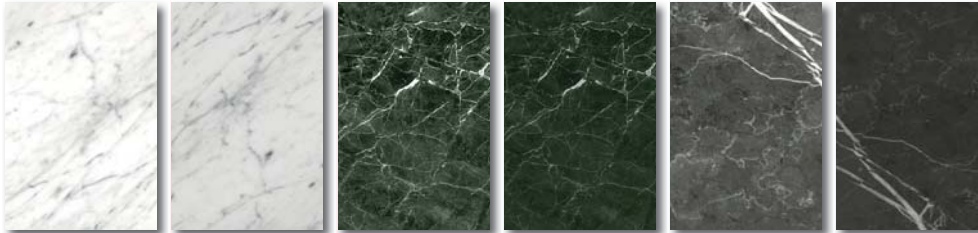


R01
Bianco

R02
Nero

Light stone is a dense, impermeable hard-paste ceramic product fired at high temperatures, causing the mixture to vitrify. Variations in colour are attributable to the different reaction during firing.

MARBLE



MM1
Polished bianco
carrara

MM2
Matt bianco
carrara

MM5
Polished verde
guatemala

MM6
Matt verde
Guatemala

MM3
Polished grigio
oriente

MM4
Matt grigio
oriente

LAVA STONE



MM7
Matt

MM8
Matt black

IMPORTANT INFORMATION

Marble and lava stone are natural products and, as such, considerable variations can occur in the colour of the material and, in the case of marble, in the veining, too.

BIANCO CARRARA

White marble, with a granulated sugar-like texture and grey/dark-grey veining. It may feature small pits or crystalline inclusions varying in size. This material has a good degree of cohesion and does not require resining. Whitish or yellowish veins may be visible, mostly due to the presence of silica impurities. Natural fissures are commonly encountered in the marble: they run in a different direction to that of the sedimentation that formed the rock and appear as fine lines or fissures. In this marble, veins can give the surface a flow, further enhancing its appearance.

GRIGIO ORIENTE

Tobacco-coloured marble featuring a thread-like pattern running in no dominant direction. It features a discontinuous pattern of white or white/rust-brown veins, occasionally with metallic inclusions that appear as shimmering bronze/gold-coloured patches. These are due to the presence of siderite and often measure more than a centimetre across. Patches of more porous material are widespread throughout this marble and are remedied by resining and filling the exposed side of the top. Resining is required to improve the material's cohesion, while filling is done to correct these "softer" parts of the surface, which can vary in size. Consequently, resin and filling procedures should be seen as an inevitable part of the processing of this marble. As a result of the process, light can bounce off the treated areas of the polished surface differently when viewed against the light.

VERDE GUATEMALA

This rock is a member of the ophite group. The predominant mineral is olivine, which gives it its dark green colour. It contains random patterns of additional minerals that produce white inclusions, usually clustered in mottled patches. This material's distinctive vitreous structure means it does not have as much of a "mirror finish" as other marbles when polished.

The green colour seen in a slab varies in intensity and distribution, clustered in different concentrations and shapes featuring irregular outlines.

LAVA STONE

Lava stone is a rock formed as a result of a volcanic eruption. It owes its origin and shape to deposits of volcanic ash, sand and lapilli. It has a basically microcrystalline structure and the honed surface shimmers with microscopic cavities that can be seen with the naked eye when light shines across it. Its base colour is mainly grey with dark patches, the latter arranged in a "sprinkled" pattern or clustered in veins, with a brushstroke-like effect and appearance. It is not unusual, depending on the weights and predominance of certain individual minerals over others, to see inclusions ranging in colour from white to ochre yellow, denoting individual crystals, or streaks, which can look like abrasions. The mineral responsible for the ochre yellow colour is iron, while the white colouring comes from magnesium, calcium, sodium, etc.

Refer to the pages inside the price list to check what finishes are available for each item.

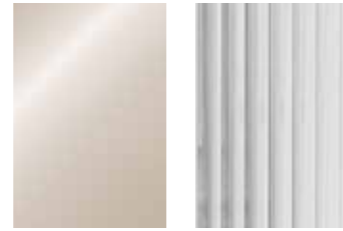
Printed samples used to illustrate finishes and colours may not represent the true colour; they are given as a rough guide only and may not match the product actually sold.

Vetro temprato standard
Standard toughened glass



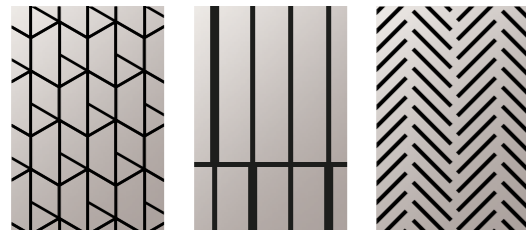
C80 fumé | smoked
C08 trasparente | transparent

Vetro temprato plus
Plus toughened glass



C81 stop-sol
C02 cannettato | reeded

Vetro temprato fumé serigrafato
Screen-printed smoked toughened glass



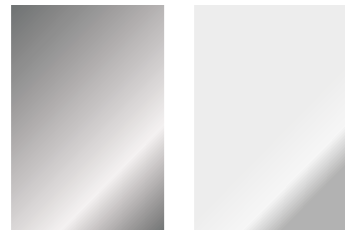
C86 segno
C87 rigo
C88 tratto

Vetro temprato Toughened glass



C01 titanio | titanium

Specchio Mirror



C05 brunito | bronze
C06 chiaro | light

Finitura metallica Metal finish



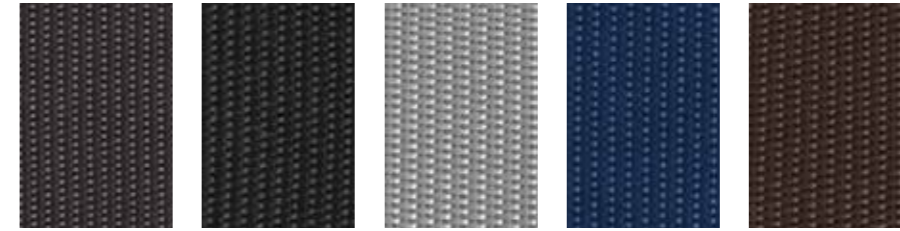
06 brunito | bronze
A1 black nichel lucido | polished

Metallo chiusure Closing system metal



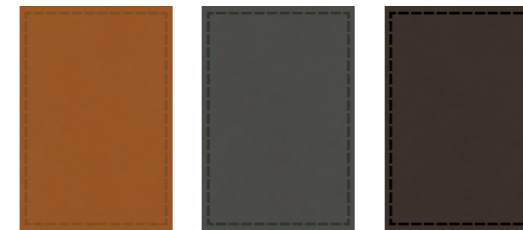
33 nichel | nickel
06 brunito | bronze

Nylon per cinghie letto Tape
Nylon for Tape bed belts



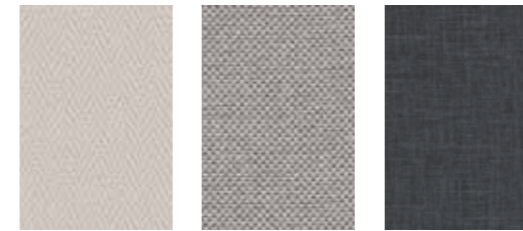
E10 quarzo
E18 nero grafite
E30 grigio
E47 marino
E40 caffè

Cuoio Leather



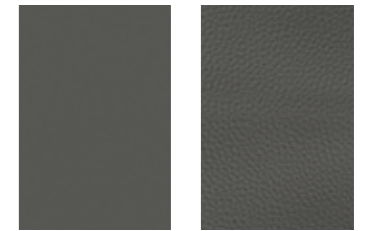
03W cognac
03X scoglio
03T testa di moro

Materico Textured



74 tweed
60 oxford
83 ardesia

Interno cassetti Drawer interior



16 lavagna
03Z similpelle | leatherette