

install guide

liner rim step can hinge block replacement



Hinge block with liner pocket assembly PD6275

for CW2023 / CW2024 / CW2080 / CW2086

45L / 55L liner rim step can

Tools you need:

Phillips-head screwdriver



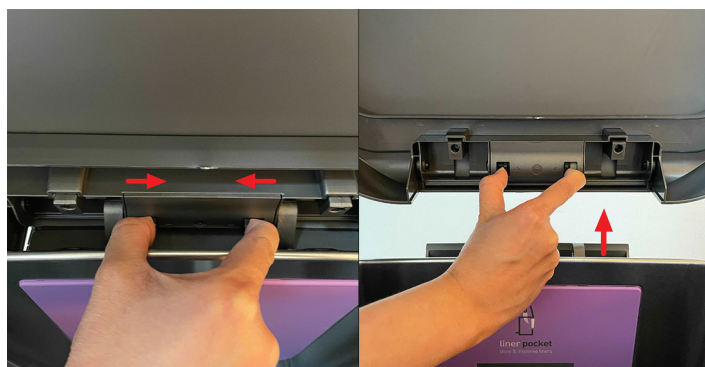
video guide

Removing hinge block with liner pocket

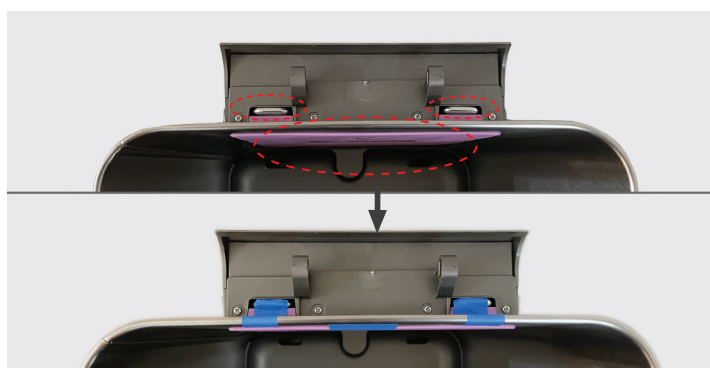
1. Open lid and liner rim and push back until it is locked into place.



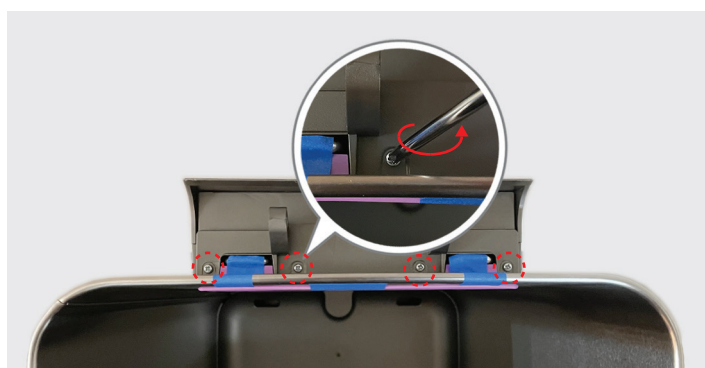
2. Remove lid assembly from can body by pinching center tabs and pulling lid assembly upward.



3. Tape down the circled parts shown below with masking tape or painter's tape.



4. Remove the 4 screws using a Phillips-head screwdriver.



5. Remove the back panel from the can body by lifting upwards and backwards.

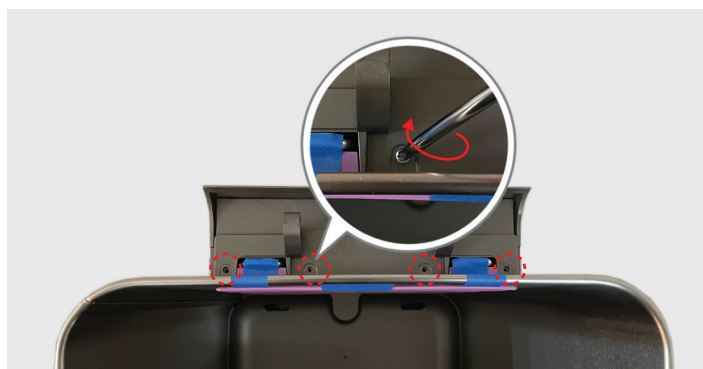


Installing hinge block with liner pocket

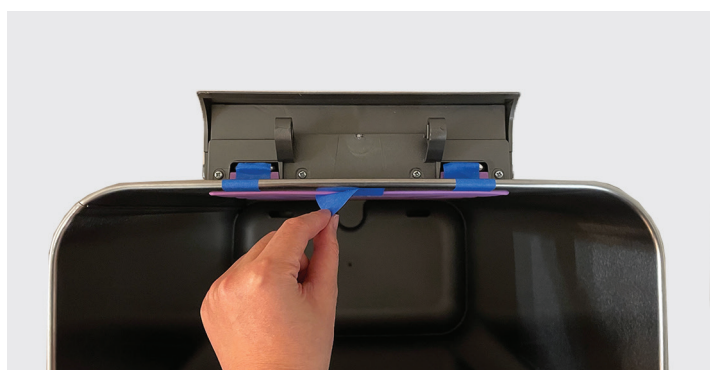
1. Replace the new back panel onto the back of the body.



2. Insert screws into the 4 holes and screw in using Phillips-head screwdriver.



3. Remove all tape.



4. Pinch center tabs and place lid assembly onto the can.



5. Close lid.



Final Result



product questions or returns
customer.support@simplehuman.com