

# MOTOR PROGRAM GUIDE (POWERED)

## REQUIRED STEPS

### STEP 1) INITIAL REMOTE SETUP

- Remove the Remote from the box.
- Remove the battery cover plate on the rear, remove the battery to access and remove the plastic battery isolating tab, then reinsert the battery.

### STEP 2) SET THE NUMBER OF CHANNELS

- Hold the **P1-** and **P1+** buttons simultaneously for 2 seconds. LCD should display **C** first, then **15** after about 3 seconds.
- Use Channel **UP/DOWN** to change the number of required channels.
- Press and hold the **STOP** button for 3 seconds; new settings saved.

**NOTE:** THIS HIDES UNUSED CHANNELS, WHICH CAN BE SHOWN AGAIN BY CHANGING THE NUMBER OF REQUIRED CHANNELS.

### STEP 3) PAIR REMOTE TO MOTOR (POWERED MOTOR)

- Select Channel on Remote.
- Plug the motor into power (motor jiggles down then up to show power present).
- Hold the **STOP** button on the Remote for 5 seconds (the motor double-jiggles in response).

**NOTE:** ONLY WORKS WITHIN 7 SECONDS OF POWERING THE MOTOR.

### STEP 4) CHECK MOTOR DIRECTION

**NOTE:** MAKE SURE DIRECTION IS CORRECT BEFORE SETTING LIMITS.

(UP should roll the blind fabric onto the roller)

- To Change, Hold the **UP** and **DOWN** buttons simultaneously for 2 seconds. (Motor jiggles to confirm the direction changed.)

### STEP 5) SET UPPER LIMIT

- Move the blind to the upper limit (the blind will move in *Step Mode* - Hold for 3 seconds for *Run Mode*).
- Hold the **UP** and **STOP** buttons simultaneously for 3 seconds to set the limit. (The motor will double-jiggle to confirm.)

### STEP 6) SET LOWER LIMIT

- Move to lower limit (blind will move in *Step Mode* - Hold for 3 seconds for *Run Mode*)
- Hold the **DOWN** and **STOP** buttons simultaneously for 3 seconds to set the limit. (The motor will double-jiggle to confirm.)

## ADDITIONAL FUNCTIONS

### ENTER OR EXIT STEP MODE

- Hold the **UP** and **DOWN** buttons simultaneously for 5 seconds (the motor will jiggle).
  - Press the **STOP** button (the motor will beep).
- The motor will now move in small steps (hold the button down for 3 seconds for continuous running).

### FAVOURITE POSITION

To set a favourite position, first, ensure that the main limits are set.

- Move the blind to the position you want to set as your favourite.
- Press **P2** (1 jog + 1 beep), then **STOP** (2 jiggles + 3 beeps).

The favourite position is now set; repeat the steps to remove it.

- To access your favourite position, hold down the **STOP** button for 2 seconds until the blind starts to move.

### ADJUST UPPER LIMIT

- Hold the **UP** and **STOP** buttons simultaneously for 5 seconds (1 jiggle + long beep).
- Move to a new Upper Limit, Then Hold the **UP** and **STOP** buttons simultaneously for 3 seconds. (2 jiggles + 3 beeps) - The blind will double-jiggle to confirm the new limit set.

### ADJUST LOWER LIMIT

- Hold the **DOWN** and **STOP** buttons simultaneously for 5 seconds (1 jiggle + long beep).
- Move to a new Lower Limit, Then Hold the **DOWN** and **STOP** buttons simultaneously for 3 seconds (2 jiggles + 3 beeps) - The blind will double-jiggle to confirm the new limit set.

### PAIRING/UNPAIRING ADDITIONAL REMOTE

- On programmed remote press **P2** (1 jiggle + 1 beep) then **P2** (1 jiggle + 1 beep) then **P2** on the additional Remote you want to add (2 jiggles + 3 beeps)

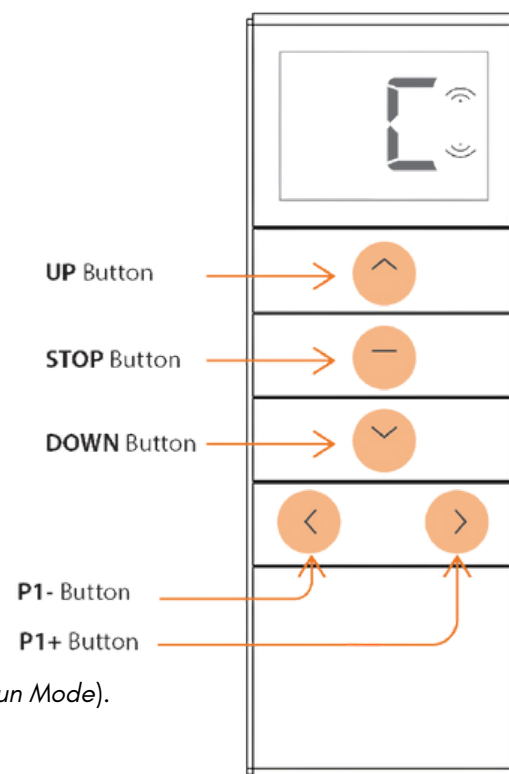
### REMOVE ALL REMOTES

- Press **P2** (1 jiggle + 1 beep) then **STOP** (1 jiggle + 1 beep) then **P2** (2 jiggle + 3 beeps)

### DELETE ALL LIMITS

- Press **P2** (1 jiggle + 1 beep) then **DOWN** (1 jiggle + 1 beep) then **P2** (2 jiggle + 3 beeps)

## REMOTE FRONT



## REMOTE BACK

