

MOTOR PROGRAM GUIDE (BATTERY)

REQUIRED STEPS

STEP 1) INITIAL REMOTE SETUP

- Remove the Remote from the box.
- Remove the battery cover plate on the rear, remove the battery to access and remove the plastic battery isolating tab, then reinsert the battery.

STEP 2) SET THE NUMBER OF CHANNELS

- Hold the **P1-** and **P1+** buttons simultaneously for 2 seconds.
LCD should display **C** first, then **15** after about 3 seconds.
- Use Channel **UP/DOWN** to change the number of required channels.
- Press and hold the **STOP** button for 3 seconds; new settings saved.

NOTE: THIS HIDES UNUSED CHANNELS, WHICH CAN BE SHOWN AGAIN BY CHANGING THE NUMBER OF REQUIRED CHANNELS.

STEP 3) ENSURE THE MOTOR IS CHARGED

- Plug in a 5V USB power supply (Min 1 amp) into the USB C socket on the motor head; depending on the amperage, the first charge may take 6-10 hours.

Indicator Light on Motor Head **Flashing Red** = Time to charge motor.

Indicator Light on Motor Head **Flashing Green** = Motor is charging.

Indicator Light on Motor Head **Solid Green** = Motor is fully charged.

IMPORTANT: REMOVE THE CHARGER WHEN THE MOTOR IS FULLY CHARGED TO PROLONG BATTERY LIFE.

STEP 4) PAIR REMOTE TO MOTOR (BATTERY MOTOR)

NOTE: MAKE SURE B1 BUTTON ON THE MOTOR IS ACCESSIBLE.

- Select the desired Channel on the Remote.
- Press and hold the **B1** button on the motor head for 2 seconds (motor will jiggle + 1 long beep).
- Hold the **STOP** button on the Remote for 5 seconds (the motor double jiggles in response).

STEP 5) CHECK MOTOR DIRECTION

NOTE: MAKE SURE DIRECTION IS CORRECT BEFORE SETTING LIMITS.

(UP should roll the blind fabric onto the roller)

- To Change, Hold the **UP** and **DOWN** buttons simultaneously for 2 seconds.
(Motor jiggles to confirm the direction changed.)

STEP 6) SET UPPER LIMIT

- Move the blind to the upper limit (the blind will move in *Step Mode* - Hold for 3 seconds for *Run Mode*).
- Hold the **UP** and **STOP** buttons simultaneously for 3 seconds to set the limit.
(The motor will double-jiggle to confirm.)

STEP 7) SET LOWER LIMIT

- Move to lower limit (blind will move in *Step Mode* - Hold for 3 seconds for *Run Mode*)
- Hold the **DOWN** and **STOP** buttons simultaneously for 3 seconds to set the limit.
(The motor will double-jiggle to confirm.)

ADDITIONAL FUNCTIONS

ENTER OR EXIT STEP MODE

- Hold the **UP** and **DOWN** buttons simultaneously for 5 seconds (the motor will jiggle).
- Press the **STOP** button (the motor will beep).

The motor will now move in small steps (hold the button down for 3 seconds for continuous running).

FAVOURITE POSITION

To set a favourite position, first, ensure that the main limits are set.

- Move the blind to the position you want to set as your favourite.
- Press **P2** (1 jiggle + 1 beep), then **STOP** (2 jiggles + 3 beeps).

The favourite position is now set; repeat the steps to remove it.

- To access your favourite position, hold down the **STOP** button for 2 seconds until the blind starts to move.

ADJUST UPPER LIMIT

- Hold the **UP** and **STOP** buttons simultaneously for 5 seconds (1 jiggle + long beep).
- Move to a new Upper Limit, Then Hold the **UP** and **STOP** buttons simultaneously for 3 seconds.
(2 jiggles + 3 beeps) - The blind will double-jiggle to confirm the new limit set.

ADJUST LOWER LIMIT

- Hold the **DOWN** and **STOP** buttons simultaneously for 5 seconds (1 jiggle + long beep).
- Move to a new Lower Limit, Then Hold the **DOWN** and **STOP** buttons simultaneously for 3 seconds (2 jiggles + 3 beeps) - Blind will double-jiggle to confirm the new limit set.

PAIRING/UNPAIRING ADDITIONAL REMOTE

- On programmed remote press **P2** (motor 1 jiggle + 1 beep) then **P2** (motor 1 jiggle + 1 beep) then **P2** on the additional Remote you want to add (2 jogs + 3 beeps)

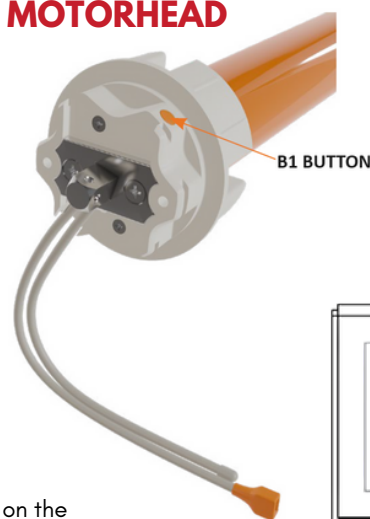
REMOVE ALL REMOTES

- Press **P2** (1 jiggle + 1 beep) then **STOP** (1 jiggle + 1 beep) then **P2** (2 jiggles + 3 beeps)

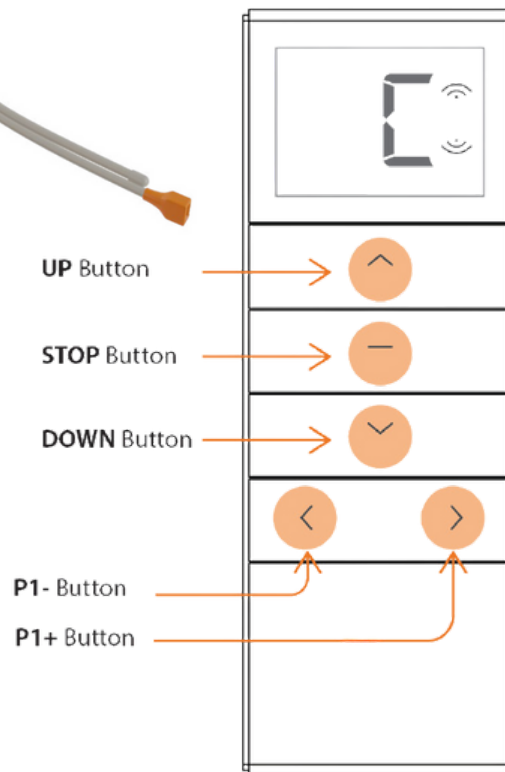
DELETE ALL LIMITS

- Press **P2** (1 jiggles + 1 beep) then **DOWN** (1 jiggles + 1 beep) then **P2** (2 jiggles + 3 beeps)

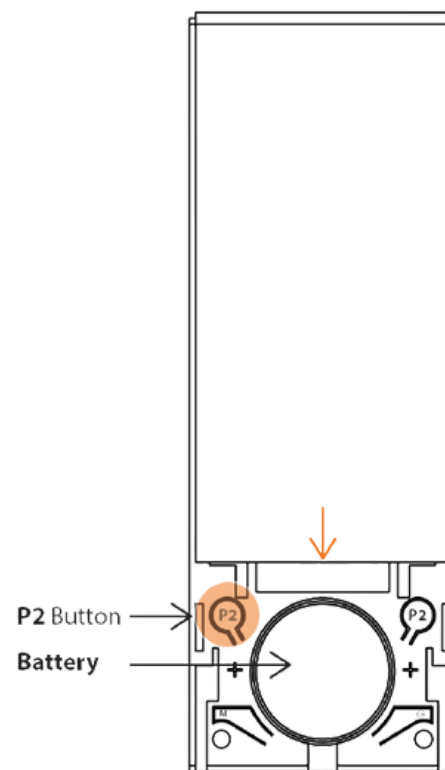
MOTORHEAD



REMOTE FRONT



REMOTE BACK



Remove Cover
to change battery &
access P2 Button

