



*Gentleman's Brand*  
**AMBASSADOR KIT V4**  
**USER GUIDE**

# **GENTLEMAN'S BRAND**

## **Making Combustion Obsolete™**

Founded in 2008, Gentleman's Brand is committed to engineering premium vaporizer pens and portable vaporizer accessories. We believe in creating products that combine performance, safety and beautiful design, while providing world-class customer service.

We stand behind all of our products. That's why we offer a one year "No Hassle" warranty for all\* of our hardware.

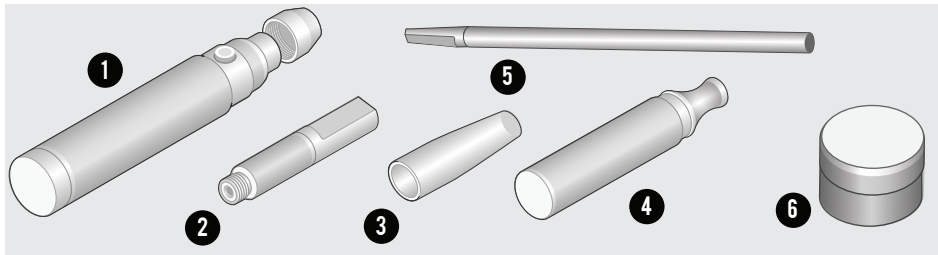
For more information, visit our online store at [www.GentlemansVapes.com](http://www.GentlemansVapes.com)

\*Does not include used cartridges

# Contents

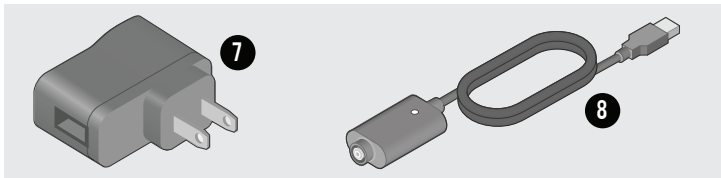
Cover.....	1
Introduction.....	2
Contents.....	3
Ambassador Kit V4 Contents.....	4
Double Agent - Adjusting the Voltage, Recommended Voltage Settings.....	5
Turning On/Off the Double Agent, Charging the Double Agent.....	6
Charging the Double Agent.....	7
Priming the V2 and Mega V2 Cartridges.....	8
Priming (Continued).....	9
Filling the V2 Cartridge.....	10
Filling the Mega V2 Cartridge.....	11
Concentrate Cartridge Filling Tips.....	12
Concentrate Cartridge Life Span.....	13
Filling the Dry Herb Cartridge <b>*Sold Separately at GentlemansVapes.com*</b> .....	14
Filling the Dry Herb Cartridge (Continued).....	15
Proper Vaping Technique.....	16
Troubleshooting.....	17
Warranty.....	18
Safety Warning.....	19
End.....	20

# Ambassador Kit V4 Contents



- ❶ Double Agent Pen w/Aesthetic Sleeve
- ❷ V2 Concentrate Cartridge w/Mouth Tip
- ❸ Silicone Mouth Tip
- ❹ Mega V2 w/Mouth Tip

- ❺ Fill Tool
- ❻ Non-stick Concentrate Jar
- ❼ Wall Adapter
- ❽ 420 mAh USB Rapid Charger



# Double Agent - Adjusting the Voltage

(Higher voltages may overheat coil causing permanently failure.)

The Double Agent is a variable voltage vaporizer. By adjusting the voltage up or down you choose how much power goes to the heating element in the cartridge. Higher voltages provide more power causing larger vapor clouds, a higher temperature of vapor, and can cause a burnt taste if the voltage is too high.

The Double Agent features an adjustable, variable voltage setting dial on the bottom of the vaporizer. You can adjust this at any time by twisting the dial to the desired voltage setting. The voltage ranges from 3.2V to 4.8V.

## RECOMMENDED VOLTAGES FOR VAPING

V2 Oil Cartridge	3.8V to 4.2V**
Mega V2 Oil Cartridge	3.8V to 4.2V**
Glass Globe	4.0V to 4.2V**
Dry Herb Cartridge	3.6V to 4.0V**
Saboteur Tank	3.8V to 4.2V

**\*\*Higher voltages may overheat coil causing permanently failure.**

## Turning On/Off the Double Agent

The Double Agent can be locked in the off position so that accidental button pushes don't drain the battery. Rapidly press the button 5 times to turn the Double Agent off. Pressing the button in this state will have no effect. You will need to press the button another 5 times to turn on the Double Agent again.

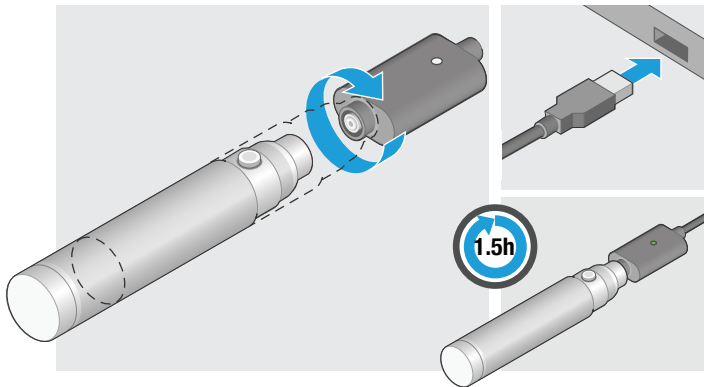
The Double Agent has a built-in safety feature; it will automatically shut off after 6 seconds of the button being pressed. The LED light will blink several times to tell you your pen is shutting off. Simply release the button and press again to continue use.

## Charging the Double Agent

The Double Agent can be charged by screwing it into the rapid charger (page 7).

**WARNING:** Do not plug your vaporizer in to any USB charger other than the ones that came with your kit. USB chargers are NOT interchangeable and the wrong charger can provide too much current and may damage your vaporizer. Replacement chargers are available through our website.

# Charging the Double Agent

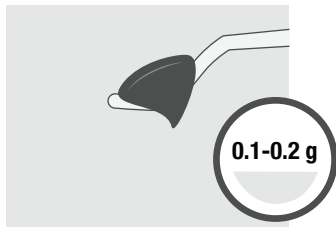
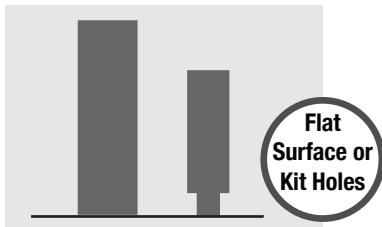


1. Screw the Double Agent into the USB rapid charging cord.
2. Plug the USB rapid charging cord in to your computer or the included wall adapter.
3. The light on the charger will change color from red to green when the vaporizer is done charging.
4. Time to full charge is one hour and thirty minutes.

# Priming the V2 and Mega V2 Cartridges

**WARNING:** Before you can fill your cartridge and begin using it, you need to prime the cartridge using the following instructions.

1. Remove the mouth tip from the cartridge.
2. Place your V2 or Mega V2 upright on a flat surface. Your kit features holes in the removable foam layer inside the box to help hold cartridges upright during filling.
3. Scrape 0.1-0.2 grams of concentrate onto your fill tool.
4. Position the fill tool so that the concentrate is directly above the center of the cartridge.

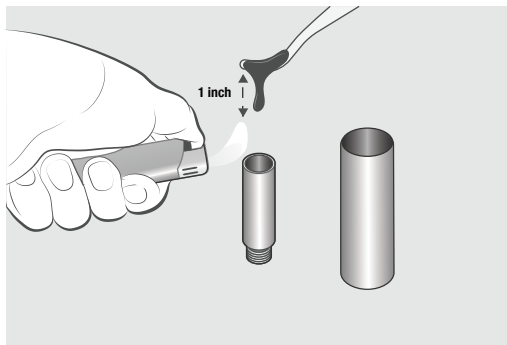




## Priming (Continued)

5. Gently heat the concentrate with a lighter until it begins to liquify. Drip 2 drops (0.1-0.2g) of concentrate onto the heating coil at the center of the cartridge.

6. Screw the cartridge into your vaporizer. Do not attach the mouth tip yet. On your vaporizer's lowest heat setting push the button for 2 seconds. You should see the concentrate bubble up around the heating coil.



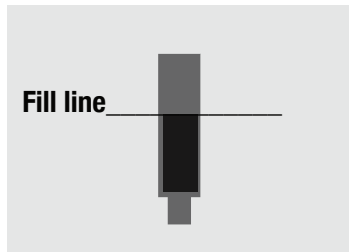
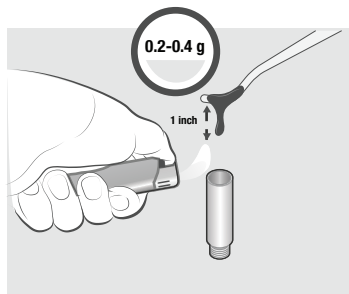
7. You are now ready to fill your V2 or Mega V2 cartridge. You only need to prime new cartridges; you do not have to do this before refilling cartridges you've already been using. Continue reading on for instructions on how to fill the cartridge.

# Filling the V2 Cartridge

1. If you haven't already primed the cartridge please read the directions on Pages 7-8 first.

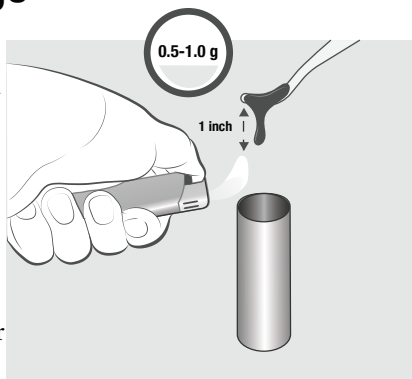
2. Collect 0.2g - 0.4g of concentrate onto your fill tool. Slowly heat the concentrate with a lighter until it slides off the fill tool. Position the fill tool so the concentrate drips directly onto the heating element.

3. The cartridge is now ready for vaping. Screw it onto your vaporizer and, if you're using the Double Agent, start on the lowest heat setting (red). While holding the button, take slow and steady puffs. Read Oil Cartridge Filling Tips (page 10) and Vaping Technique (page 14) for helpful tips on getting the most out of your oil cartridge.



# Filling the Mega V2 Cartridge

1. Collect 0.5g - 1.0g of concentrate on your filling tool. Slowly heat the concentrate with a lighter until it slides off the fill tool. Try to guide the concentrate down to the heating element at the bottom of the cartridge. If using waxier product, after priming, you may roll the product between your fingers to form a ball and drop it in the cartridge, making sure it reaches the bottom of the cartridge. For best results try to center the ball to sit on top of the heating element.



2. The cartridge is now ready for vaping. Screw onto your battery and start at the lowest heat setting (red). If airflow cannot be achieved turn the heat setting up to medium (purple). While holding the button, take slow and steady drags. You can release your finger from the button on the battery before the 5 second auto shut off and quickly push it again to get a second and/or larger hit.

# Concentrate Cartridge Filling Tips

While it's natural to want to fill the V2 Concentrate Cartridge to the top, this will result in suboptimal performance. This is because the vapor is produced at the bottom of the cartridge and needs to "bubble up" through the solid layer of concentrate above it. That's why we recommend filling the V2 Oil Cartridge to the halfway point (equivalent to about 0.4g of concentrate).

If you overfill your cartridge you'll have difficulty getting airflow when you inhale. If this happens you have two options. The first is to use a lighter to heat the side of the cartridge so that the concentrate inside melts a little bit making it easier for the vapor to escape. The second option is to press and hold the button on your vape and inhale very gently. Be patient. It can take up to 15 seconds to establish airflow. If you inhale quickly you risk sucking concentrate into the mouth tip. When airflow is established you'll hear a popping sound and feel a sudden increase in airflow. It's unmistakable.

If you accidentally spill concentrate onto the side of a cartridge you can clean the outside of the cartridge using an alcohol wipe or a paper towel soaked with rubbing alcohol.

# Concentrate Cartridge Lifespan

Keeping the heating coil clean will improve taste and cartridge lifespan. To clean the coil perform a “dry burn”. Press the button on your vaporizer until the coil starts to turn orange and then let it cool down for 4-6 seconds. Then do it again. Do this every 2-4 cartridge fills.

Vaping at higher voltages reduces the lifespan of the heating element. We use a proprietary alloy for our heating elements that is inert and more resilient to high temperatures and thermal cycling than industry-standard nichrome.

Oftentimes you can bring a non-functioning cartridge back to life by soaking it in isopropyl alcohol or vodka overnight. The alcohol will dissolve the resin. After removing it turn the cartridge upside down and let it dry atop a paper towel for 24 hours. Do not blow through the cartridge.

# Filling the Dry Herb Cartridge

**IMPORTANT: Dry Herb cartridges are an optional upgrade when purchased online and are NOT INCLUDED in the Ambassador Kit.**

1. Remove the mouth tip from the cartridge by pulling and twisting it away from the cartridge.
2. Break apart the dry herb into small pieces using your hands or with a grinder. Finely ground herbs will result in larger puffs and allow your herbs to burn evenly.
3. With the mouth tip removed, drop the herb into the cartridge one pinch at a time. Be careful not to push the heating coil down. Be gentle and try to move the coil as little as possible when filling or emptying it to avoid damaging it. Pack the herb down by tapping the cartridge on a hard flat surface. The herb will fall and settle comfortably around the heating coil. Repeat this step until your cartridge is roughly 70% full. You don't want herb above the heating element because it won't burn evenly if that happens. Make sure you don't pack the herbs too tightly as it will make it difficult to remove leftover dry herb after use.

## Filling the Dry Herb Cartridge (Continued)

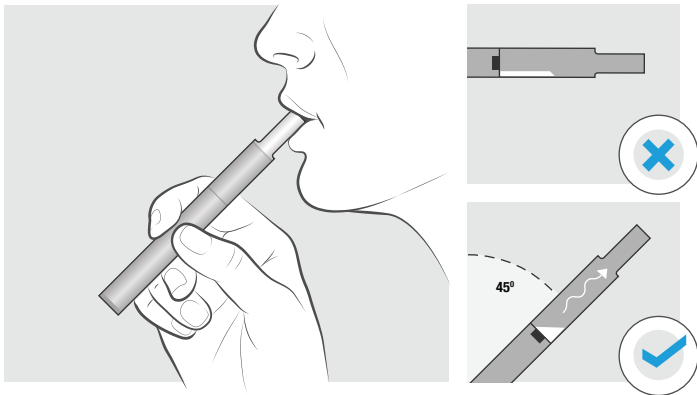
4. Push the mouth tip back onto cartridge. Then screw the cartridge securely onto the battery. Hold the battery vertically and press your mouth to the mouth piece. Push and hold the button while taking long slow drags.

Tip: In between puffs, you can shake the contents of the cartridge to redistribute the herb. This will increase the number of puffs per fill.

To remove dry herb from cartridge, take off the mouth tip by twisting and pulling away from cartridge. Then turn the cartridge upside down and gently tap it to remove the remaining used herb.

# Proper Vaping Technique

1. Hold the vaporizer **vertically** or at a 45 degree angle. If you hold the pen horizontally (like a cigarette) your concentrate will drip away from the heating coil, producing less vapor.



2. Hold the button for 2 seconds and then begin inhaling slowly. If you inhale quickly, the heating coil cools down and you will get a smaller puff.



# Troubleshooting

At Gentleman's Brand we pride ourselves in providing the highest quality vaporizers, globes and cartridges on the market. For new and returning customers we have set up a Frequently Asked Questions (FAQ) and a troubleshooting guide that answers technical issues we have recorded from our customers.

**[www.GentlemansVapes.com/Support](http://www.GentlemansVapes.com/Support)**

**[www.GentlemansVapes.com/Videos](http://www.GentlemansVapes.com/Videos)**

We recognize that not all issues can be covered in a FAQ or guide. For any questions not covered by our guides please feel free to email our dedicated customer support staff:

**[support@gentlemansvapes.com](mailto:support@gentlemansvapes.com)**

# Warranty

Gentleman's Brand's unconditionally and directly guarantees, for a period of one year from the original purchase date, that the Double Agent, and included wall adapter and USB charger will be free from manufacturing defects. If, during this period, these parts fail to function properly during normal use, they will be repaired or replaced by Gentleman's Brand at no charge except shipping and handling. Customers are limited to 2 warranty claims within a one year period. Proof of purchase is required with all warranty claims.

Cartridges and other accessories are not covered under any warranty but are guaranteed against DOA (dead on arrival) only. For this reason we insist that our customers very carefully follow the priming, filling and use instructions provided in this booklet. Claims for non-functioning cartridges must be initiated within 14 days of receipt of product.

If you are outside the warranty period we may be offering refurbished products, trade-ins, and other incentives. For more information visit:

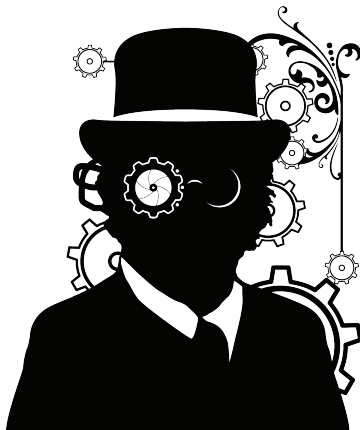
**[www.GentlemansVapes.com/Warranty](http://www.GentlemansVapes.com/Warranty)**

# Safety Warning

If your pen is malfunctioning, **do not** attempt to charge or disassemble it. Gentleman's Brand vaporizers include lithium-ion batteries and you risk serious bodily harm and injury if attempting to repair, modify or use the pen in a manner otherwise specified in this manual.

For malfunctioning or defective pens, contact customer support ([support@gentlemansvapes.com](mailto:support@gentlemansvapes.com)) and await further instruction.

Attempting to tamper with a malfunctioning pen will void any warranty claims.



*Gentleman's Brand*

**[www.GentlemansVapes.com](http://www.GentlemansVapes.com)**