



ESTABLISHED 1880

Punches, Dies, & Shear Blades

FOR OCEAN™ CLIPPER CNC ANGLE LINE I & II

☎ **USA:** 800-451-4342

☎ **International:** 330-296-4342

☎ **Fax:** 800-451-6877

💻 **Visit:** www.clevelandpunch.com

✉ **Email:** sales@clevelandpunch.com

📍 **Address:** 666 Pratt Street, Ravenna, OH 44266

CLEVELAND

PUNCH & DIE COMPANY

ESTABLISHED 1880

THE CLEVELAND ADVANTAGES

Going the Extra Mile and Delivering on Our Promises For Over 140 Years

PREFERRED TOOLING



MANUFACTURER

THE WORLD LEADER IN THE TOOLING INDUSTRY

With over 140 years of experience in the industry, our team at Cleveland Punch & Die is dedicated to supporting our customer's needs. We have the industry's largest stock inventory and are the recommended supplier for Ocean™ Clipper CNC Angle Line I & II. As the world-class leader in tooling and related components, you can be assured of our commitment to excellence.

THE GREEN TEAM

Our customer service team is here to provide the knowledge and service you deserve and strives to develop long lasting partnerships. We are available by phone, email or online chat 7am - 6pm EST.

WORLD CLASS ENGINEERING

Our Engineering team works hard to design the highest quality punches, dies, shear blades and custom tooling on the market. Our high quality and innovative tools keep your shop on the leading edge of technology.

CONSISTENT QUALITY

We provide our customers with tooling manufactured from our own proprietary tool steel. By utilizing a consistent raw material and the latest metallurgical heat-treating technology, the tooling you receive from Cleveland Punch & Die is the industry's highest and most consistent quality.

DEPENDABLE DELIVERY

Our commitment to manufacturing innovation enables Cleveland Punch & Die to provide you with prompt shipment on the highest quality tools you need. Fast delivery means increased productivity for your operation.

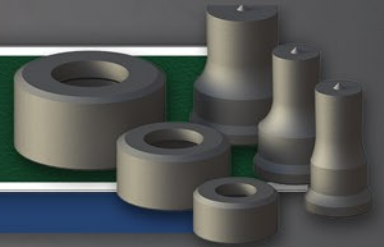


TABLE OF CONTENTS

Punches, Dies, & Shear Blades For Ocean™ Clipper CNC Angle Line I & II

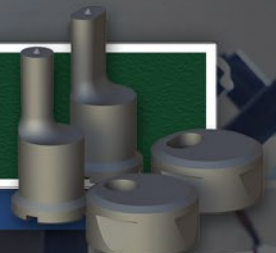
1 PUNCHES & DIES

Punches, Dies, Shape & Keyway Options



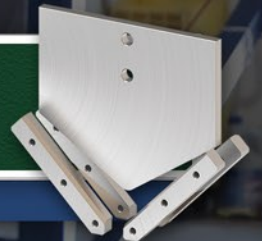
2 OFFSET TOOLING

Offset Punches, Offset Dies, Punch End Configurations, & Notch Options



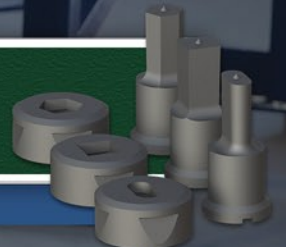
3 ACCESSORIES & BLADES

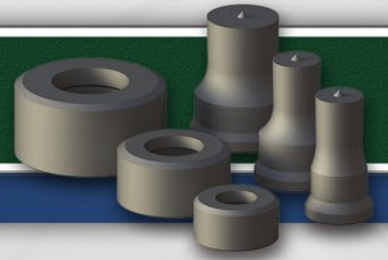
Punch Nuts, Punch-Easy®, & Angle Blades



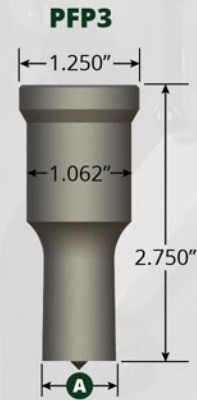
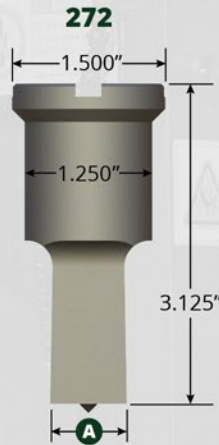
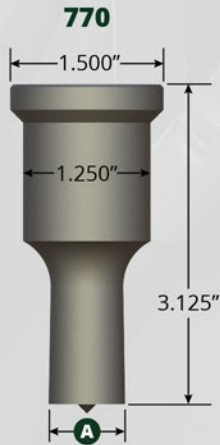
4 STOCK PUNCH & DIE CHARTS

Stock Round, Square, & Oblong Punches & Dies

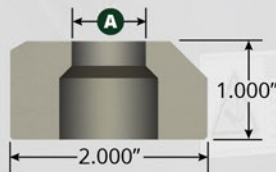
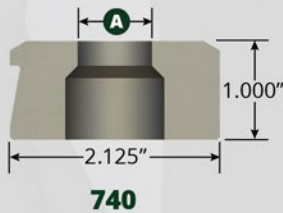




PUNCHES



DIES



PFP3
(SIDE VIEW)



PFP3
(TOP VIEW)

See stock punch & die sizes on page 4.

SHAPE OPTIONS

Shaped tooling is available upon request. When ordering, please provide size and desired shape. Punches and dies can be keyed and notched to index shape at desired orientation.



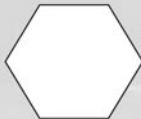
SQUARE



RECTANGLE



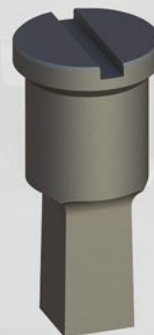
OBLONG



HEXAGON

KEYWAY OPTIONS

Shaped punches can be located with a single or cross keyway on the head of the punch.



**SINGLE
KEYWAY**



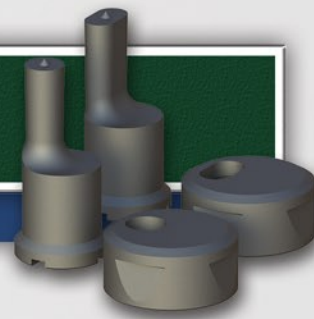
**CROSS
KEYWAY**



OSHA SAFETY WARNING: It is the users responsibility that the machine and tooling be setup and used in accordance with local and national OSHA laws and ANSI B11.5 standards for safety. Do not permit unqualified personnel to setup or operate the machine. Extreme care should be used at all times.

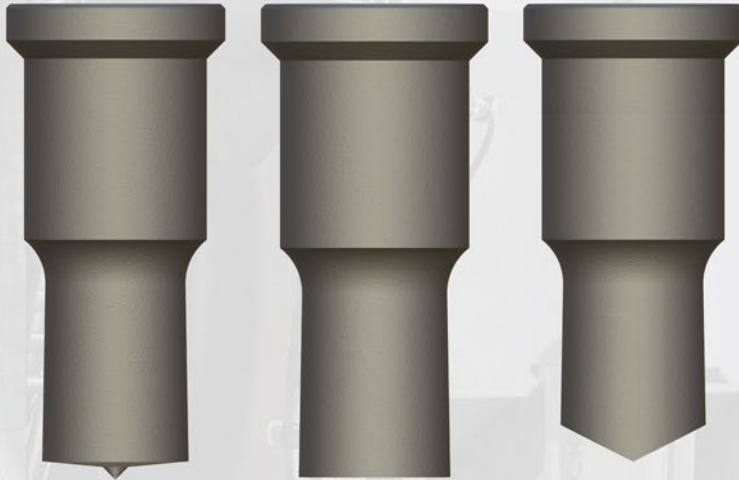
OFFSET TOOLING

Offset Punches, Offset Dies, Punch End Configurations, & Notch Options



PUNCH END CONFIGURATIONS

Multiple punch end configurations are available and designed for specific applications to achieve the highest quality hole.



CENTER POINT

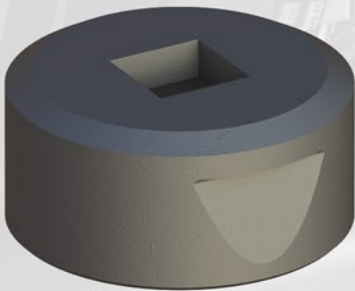
FLAT FACE

CHISEL SHEAR

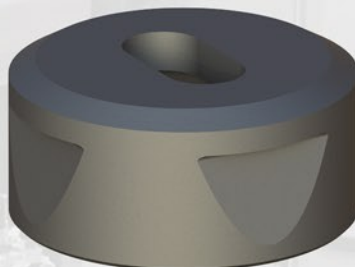
NOTCH OPTIONS

Shaped dies can be located with one or two notches.

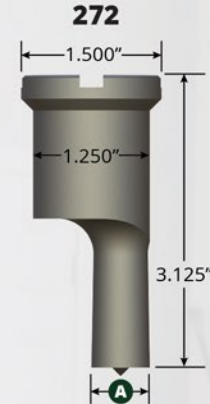
ONE NOTCH



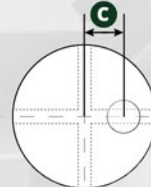
TWO NOTCHES



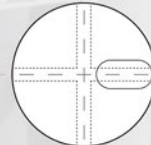
OFFSET PUNCHES



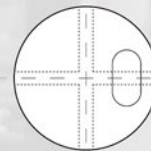
RD. A-180° STOCK



OB. A-180°



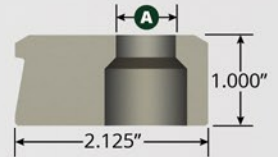
OB. B-180°



STOCK ROUND PUNCHES

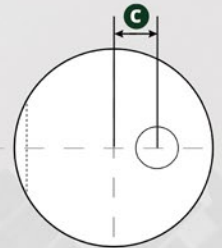
A	272	C
9/16"	•	0.344"
5/8"	•	0.312"
11/16"	•	0.281"
3/4"	•	0.250"
13/16"	•	0.218"
7/8"	•	0.187"
15/16"	•	0.156"

OFFSET DIES

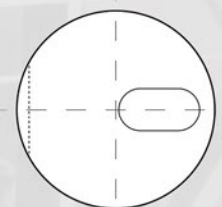


740

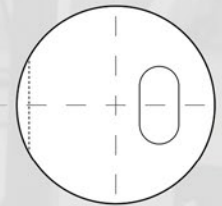
RD. A-180° STOCK



OB. A-180°



OB. B-180°

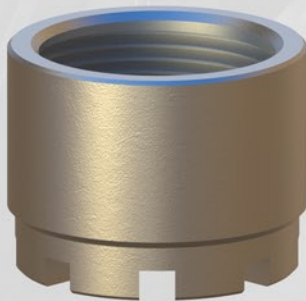


STOCK ROUND DIES

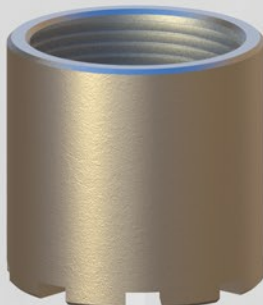
A	740	C
19/32"	•	0.344"
5/8"	•	0.344"
21/32"	•	0.312"
11/16"	•	0.312"
23/32"	•	0.281"
3/4"	•	0.281"
13/16"	•	0.250"
7/8"	•	0.218"
15/16"	•	0.187"
1"	•	0.156"



PUNCH NUTS

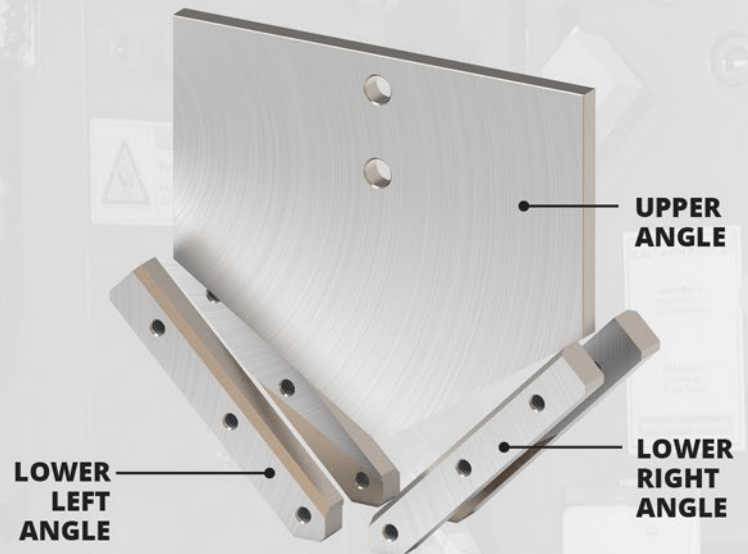


770/272



PFP3

ANGLE BLADES



OCEAN MACHINERY™ CNC ANGLE LINES

BLADES	CLIPPER I	CLIPPER II
UPPER ANGLE	P10B0030	P10B0030
LOWER LEFT ANGLE	P10B0002	P10B0002
LOWER RIGHT ANGLE	P10B0003	P10B0003

PUNCH-EASY®

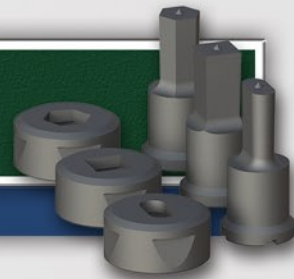
Our patented lubricant, Punch-Easy®, is formulated to increase tool life during punching and shearing applications.

PART #	DESCRIPTION
PEHP	HALF PINT
PEQTL	QUART
PEGLL	GALLON
PE5GL	5 GALLON PAIL
PE55L	55 GALLON DRUM



STOCK PUNCH & DIE CHARTS

Stock Round, Square, & Oblong Punches & Dies



STOCK ROUND PUNCHES	
A	770
1/8"	●
5/32"	●
3/16"	●
7/32"	●
1/4"	●
9/32"	●
5/16"	●
11/32"	●
3/8"	●
13/32"	●
7/16"	●
15/32"	●
1/2"	●
17/32"	●
9/16"	●
19/32"	●
5/8"	●
21/32"	●
11/16"	●
23/32"	●
3/4"	●
25/32"	●
13/16"	●
27/32"	●
7/8"	●
29/32"	●
15/16"	●
31/32"	●
1"	●
1-1/32"	●
1-1/16"	●
1-3/32"	●
1-1/8"	●
1-5/32"	●
1-3/16"	●
1-7/32"	●
1-1/4"	●

STOCK OBLONG PUNCHES	
A	272
1/4" x 1"	●
5/16" x 1"	●
3/8" x 3/4"	●
3/8" x 1"	●
3/8" x 1-1/4"	●
7/16" x 3/4"	●
7/16" x 1"	●
7/16" x 1-1/4"	●
1/2" x 1"	●
1/2" x 1-1/4"	●
9/16" x 3/4"	●
9/16" x 1"	●
9/16" x 1-1/16"	●
9/16" x 1-1/8"	●
9/16" x 1-1/4"	●
5/8" x 1"	●
5/8" x 1-1/4"	●
11/16" x 1"	●
11/16" x 1-1/16"	●
11/16" x 1-1/8"	●
11/16" x 1-1/4"	●
3/4" x 1"	●
3/4" x 1-1/4"	●
13/16" x 1"	●
13/16" x 1-1/16"	●
13/16" x 1-1/8"	●
13/16" x 1-1/4"	●
7/8" x 1"	●
7/8" x 1-1/16"	●
7/8" x 1-1/8"	●
7/8" x 1-1/4"	●
15/16" x 1-1/16"	●
15/16" x 1-1/8"	●
15/16" x 1-1/4"	●
1-1/16" x 1-3/16"	●
1-1/16" x 1-1/4"	●

STOCK SQUARE PUNCHES	
A	272
5/16"	●
3/8"	●
13/32"	●
7/16"	●
15/32"	●
1/2"	●
17/32"	●
9/16"	●
19/32"	●
5/8"	●
21/32"	●
11/16"	●
3/4"	●
25/32"	●
13/16"	●

STOCK SQUARE DIES	
A	740
11/32"	●
13/32"	●
7/16"	●
15/32"	●
1/2"	●
17/32"	●
9/16"	●
19/32"	●
5/8"	●
21/32"	●
11/16"	●
23/32"	●
3/4"	●
25/32"	●
13/16"	●
27/32"	●
7/8"	●
29/32"	●
15/16"	●
31/32"	●
1	●
1-1/32"	●
1-1/16"	●
1-3/32"	●
1-1/8"	●
1-5/32"	●
1-3/16"	●
1-7/32"	●
1-1/4"	●
1-9/32"	●
1-5/16"	●

STOCK ROUND DIES	
A	740
5/32"	●
3/16"	●
7/32"	●
1/4"	●
9/32"	●
5/16"	●
11/32"	●
3/8"	●
13/32"	●
7/16"	●
15/32"	●
1/2"	●
17/32"	●
9/16"	●
19/32"	●
5/8"	●
21/32"	●
11/16"	●
23/32"	●
3/4"	●
25/32"	●
13/16"	●
27/32"	●
7/8"	●
29/32"	●
15/16"	●
31/32"	●
1	●
1-1/32"	●
1-1/16"	●
1-3/32"	●
1-1/8"	●
1-5/32"	●
1-3/16"	●
1-7/32"	●
1-1/4"	●
1-9/32"	●
1-5/16"	●

STOCK OBLONG DIES			
A	740	740	740
9/32" x 1"	●	3/4" x 1"	●
9/32" x 1-1/32"	●	3/4" x 1-1/16"	●
5/16" x 1-1/32"	●	3/4" x 1-1/8"	●
11/32" x 1-1/32"	●	3/4" x 1-3/16"	●
13/32" x 25/32"	●	3/4" x 1-5/16"	●
13/32" x 1-1/32"	●	25/32" x 1-1/32"	●
13/32" x 1-9/32"	●	25/32" x 1-9/32"	●
15/32" x 25/32"	●	13/16" x 1-1/16"	●
15/32" x 1-1/32"	●	13/16" x 1-5/16"	●
15/32" x 1-9/32"	●	27/32" x 1-1/32"	●
1/2" x 1-1/16"	●	27/32" x 1-1/16"	●
1/2" x 1-5/16"	●	27/32" x 1-3/32"	●
17/32" x 1-1/32"	●	27/32" x 1-5/32"	●
17/32" x 1-9/32"	●	27/32" x 1-9/32"	●
9/16" x 1-1/16"	●	7/8" x 1-1/16"	●
9/16" x 1-5/16"	●	7/8" x 1-1/8"	●
19/32" x 25/32"	●	7/8" x 1-3/16"	●
19/32" x 1-1/32"	●	7/8" x 1-5/16"	●
19/32" x 1-3/32"	●	29/32" x 1-1/32"	●
19/32" x 1-5/32"	●	29/32" x 1-3/32"	●
19/32" x 1-9/32"	●	29/32" x 1-5/32"	●
5/8" x 3/4"	●	29/32" x 1-9/32"	●
5/8" x 13/16"	●	15/16" x 1-1/16"	●
5/8" x 1-1/16"	●	15/16" x 1-1/8"	●
5/8" x 1-1/8"	●	15/16" x 1-3/16"	●
5/8" x 1-3/16"	●	15/16" x 1-5/16"	●
5/8" x 1-5/16"	●	31/32" x 1-3/32"	●
21/32" x 1-1/32"	●	31/32" x 1-5/32"	●
21/32" x 1-9/32"	●	31/32" x 1-9/32"	●
11/16" x 1-1/16"	●	1" x 1-1/8"	●
11/16" x 1-5/16"	●	1" x 1-3/16"	●
23/32" x 1-1/32"	●	1" x 1-5/16"	●
23/32" x 1-3/32"	●	1-1/8" x 1-1/4"	●
23/32" x 1-5/32"	●	1-1/8" x 1-5/16"	●
23/32" x 1-9/32"	●		

PUNCH & DIE CLEARANCE CHART	
MATERIAL THICKNESS	CLEARANCE
1/4"	1/32"
5/16" - 7/16"	1/16"
1/2" - 5/8"	3/32"
3/4"	1/8"

* For A36 & Mild Steel Plate



☎ **USA:** 800-451-4342

☎ **International:** 330-296-4342

☎ **Fax:** 800-451-6877

💻 **Visit:** www.clevelandpunch.com

✉ **Email:** sales@clevelandpunch.com


📍 **Address:** 666 Pratt Street, Ravenna, OH 44266



THE WORLD LEADER IN THE TOOLING INDUSTRY

Be a Part of Our Industry's Largest Online Community

Our Instagram, Facebook, and YouTube pages are full of valuable information on how to fully utilize your punching machine. While you're there, share your work and develop new relationships with others like yourself.

 ***clevelandpunchdie***

 ***cleveland.punch***

 ***Cleveland Punch & Die Company***

Copyright © 2019 Cleveland Punch & Die Company. All rights, including without limitation all copyrights, in and to this catalog are owned solely and exclusively by Cleveland Punch & Die Company. Reproduction, distribution, or transmission of any part of this catalog, by any means or in any form of media, without the prior express written consent of Cleveland Punch & Die Company is strictly prohibited. All rights reserved.

Ocean™ Clipper CNC Angle Line I & II is a trademark of Ocean Machinery Inc. Use of Ocean™ Clipper CNC Angle Line I & II trademark and name in this catalog is for informational purposes only. It is the intention of Cleveland Punch & Die Company to recognize and provide credit to the fullest extent possible.