



SUMMACUT R SERIES

A newly designed high-speed cutting head features precision accuracy for exceptionally reliable and effortless vinyl cutting.



8 meter guaranteed tracking
Cut huge graphics, multiple copies and perfect pin stripes without babysitting your cutting plotter. SummaCut-R's built-in media rollers and titanium coated, precision edged, media drive drum deliver vinyl through the cutter in a smooth, straight and consistent manner, improving accuracy and reducing wear on your equipment.



The large, easy-to use control panel allows you to quickly and easily change settings like speed, pressure, plot mode and perform test cuts.

■ Contour Cutting

The OPOS X contour cutting system scans preprinted registration marks on the vinyl. Then, the cutter's own internal programming repositions the plot data, adjusting it for rotation and distortion. This results in highly automated and accurate contour cutting of printed vinyl graphics.

■ Flexcut

Summa's Flexcut feature makes it possible to cut simple designs completely through the backing material. Alternately, one length is cut completely through the material, and one length is cut partially through. The cutting length and Flexcut length are user definable allowing for a variety of applications. The result is a tear-off line ensuring the material maintains rigidity for transport through the Summa cutter. The finished product remains intact but easy to break apart into individual labels.

Opos X contour-cutting alignment enables you to die-cut valuable printed vinyl graphics with complete confidence and reliability.



SUMMACUT R SERIES

D60-R
D120-R
D140-R
D160-R

Technical Specifications

Velocity	Up to 1131 mm/sec, diagonal			
Acceleration	Up to 3 g diagonal			
Knife Pressure	0 - 400 grams, in 5-gram steps			
Mechanical Resolution	0,0127 mm			
Repeatability	±0,1 mm: a) up to 8 m long using vinyl < 76 cm wide b) up to 4 m long using vinyl > 76 cm wide			
Tool Compatibility	<ul style="list-style-type: none"> • Standard blade and holder for standard, reflective and fluorescent vinyls • 60° blade and holder for sandblast resist and other thick materials • Pen • Pouncing tool 			
Max. Media Width	D60-R	D120-R	D140-R	D160-R
	67 cm	127 cm	142 cm	164 cm
	D60-R FX : Roll : 11,5 - 66 cm / Sheet : 11,5 - 77 cm			
	The FX has 6 media width settings : 61 - 50 - 40 - 29 - 21 - 11,5 cm (sensor disabled)			
Max. Media Length	50 m			
Max. Media Thickness	With standard blade: 0,25 mm With sandblast blade: 0,8 mm			
Cutting Area	D60-R	D120-R	D140-R	D160-R
	60 cm	120 cm	135 cm	157,5 cm
(*extended mode)	63 cm	123 cm	138 cm	160,5 cm
	D60-R FX: 57,5 - 47 - 37,5 - 27 - 19 - 9,5 cm			
Buffer Size	16 MB			
Interface	USB 1.1 and Serial RS-232 C (up to 57600 baud)			
Firmware	DM/PL, HP-GL, HP-GL/2			
Power Requirements	100-120 /220 - 240 Vac, 50/60 Hz, 85 VA max			
Environment	15 to 35° C ; relative humidity 35 to 75% non condensing			
HxWxD-Weight	D60-R(Fx): 30 x 100 x 35 cm - 15 kg D120-R: 112 x 160 x 68 cm - 42 kg (on metal stand + basket) D140-R: 114,5 x 175 x 68 cm - 48 kg (on metal stand + basket) D160-R: 114,5 x 198 x 68 cm - 54 kg (on metal stand + basket)			

SummaCut-R Series comes with:

- Sturdy all-metal stand with basket (optional for D60-R model)
- OPOS X : Optical Positioning System
- Pair of media roll-end flanges
- 2 standard blades and 1 blade holder
- Fiber tip pen
- Manual slitter
- USB data cable(5m)
- Power Cord
- Quick start Manual
- CD containing multilingual operation manual and "Summa Cutter Control" program for Windows
- Cutting programs for Mac & for Windows with CorelDraw and Illustrator plug-in

Accessories & Consumables

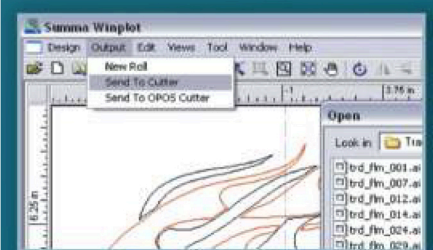
- 391-332 : Standard blade holder
- 391-358 : Set of 5 blades for thick media
- 391-360 : Set of 5 standard blades
- 391-363 : Blade holder for thick media
- 391-510 : Extra pair of media roll flanges
- 391-595 : Pouncing toolkit
- 399-050 : Floor stand (D60-R only)
- 399-075 : Floor stand with basket (D60-R only)
- MP06BK : Set of 4 fiber tip pens
- MP0646 : Set of 4 rollerball pens



Desktop Model
(D60-R only)



Optional Stand
(D60-R only)



Winplot cut-software is included along with free updates from our Web site. It is also dongle-free and can be installed on all your computers

Local Summa Dealer:

contact us for more information
01772 250207 sales@granthams.co.uk

samples and private demonstrations available upon request

Summa

Rochesterlaan 6
8470 Gistel, Belgium
Tel: +32-59 270011
Fax: +32-59 270063
E-mail : info@summa.eu

www.summa.eu