

# SIGNLAB

Faster. Easier. More Powerful.



**The world leader in sign making software.**

SignLab is available in multiple package configurations suited specifically to your workflow and budget requirements. All packages are fully upgradeable to more feature rich packages so

regardless of which package you choose, your initial investment can always be leveraged if, and when your production requirements change.





# New Features

## Vectorization Previewer

No more guess work with vectorization settings! The new vectorization previewer combines the powerful vectorization tools in SignLab with a real time preview, making it easier than ever to dial in the perfect settings for your vectorization controls with out having to redo settings.



## Fit To Shape

Want to save time on custom text design? Simply select your standard or custom shape, your text, and let the new Fit To Shape tool in SignLab v11 do the rest. This tool also works well with node editing tools for a pixel perfect design.

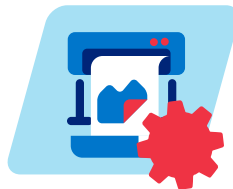


## SignLab is available in six packages.



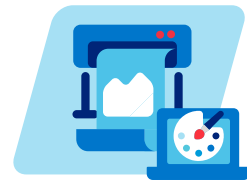
### Print and Cut

Perfect for producing digitally printed, print and cut, or vinyl cut signage and graphics. Supports simultaneous, multiple output devices and multiple queues.



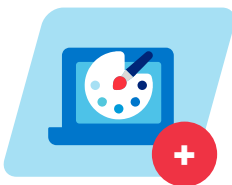
### VinylPro

All-inclusive, vinyl cut signage design and production software that supports the design of full color graphics with powerful tools required for large format printing or print and cut graphics.



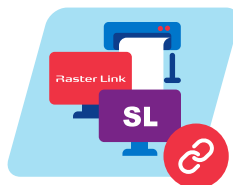
### CutPro

With hundreds of cutter drivers to choose from, SignLab CutPro offers a complete vinyl cutting design and production workstation that is feature rich in text composition, design, layout, and production tools.



### DesignPro

Add a complete stand-alone, signmaking-specific design station to your workflow. Great signmakers currently using other software that may not be sign or graphic production specific.



### RasterLink™ Edition

Maximize the investment you have made in your Mimaki™ printer. This module enables SignLab to work seamlessly with Mimaki RasterLink™ software.



### VersaWorks™ Edition

Specially configured for sending designs directly to your VersaWorks™ queues and your Roland™ printer. Print quickly and easily to either queue "A" or "B" directly from SignLab.



# More New Features

## Effects Catalog

Back up your most commonly used effects, combination of effects, and settings to easily apply to new objects. Dial in the perfect effect once and apply it to new objects with just a click, all stored in your own catalog.



## PDF Cutter Support

Easily work with other printing and cutting systems by saving cutter data like registration marks and contour cut lines to a PDF document.



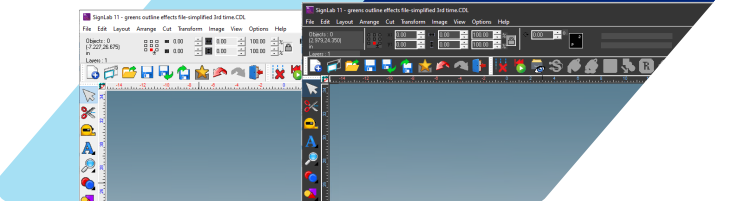
## Power Weed Text Lines

Apply weed cutlines in the optimal position without affecting the text cutlines, reducing errors and saving time.

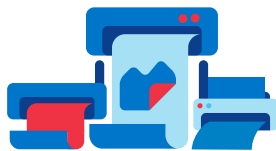


## Theme Selector

Whether you work in a bright or darker environment, SignLab's new theme switcher lets you choose from and light or dark UI to match your preferred workflow configuration.



## Benefits of using SignLab



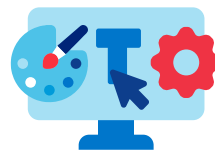
### The Widest Range of Supported Devices

Fiercy engineers work closely with hundreds of hundreds of manufacturers across thousands of devices to ensure seamless output device support for printers, cutters, and hybrid devices.



### Graphic Production Specific Tools

Get the powerful tools you need for actual graphic design and production, especially vinyl or print and cut workflows, that are often missing from design-only applications.



### Single Software Platform

Design, edit, print, and cut all from a single software platform. Reduce learning curves and production errors by working from a professional all in one platform.



### Design Application Support

Already working with a separate design application? SignLab easily imports files from popular applications like Corel Draw™ and Adobe Illustrator™.



# SignLab Modules\*

[Learn More](#)



### SignLab RasterLink™

Add direct support and more granular controls for Mimaki RasterLink devices.



### SignLab VersaWorks™

Add direct support and more granular controls for Roland VersaWorks devices.



### Automatic Job Sorter (AJS)

Automatically filter files by production requirement, import new files, and send directly to specific queues or printers.



### DeviceLink/Ink Saver

Standardize color output on different devices. Profile your devices to provide consistent output on different devices. With Ink Saver, reprofile existing profiles and reduce ink limits without reducing quality.



### DeviceLink

Profile your devices to provide consistent color output on different devices.



### ICC Profiling

Create and edit the latest ICC compliant profiles quickly and easily. Compatible with all new ICC formats.

Discover the benefits of using a single source for all your design and production requirements



#### Supported Printers:

Visit [cadlink.com/supportedoutputs/](http://cadlink.com/supportedoutputs/) for a list of all supported printers.

#### Compatible with:

Windows 11

Windows 10

64 bit

#### System Requirements:

	MINIMUM	RECOMMENDED
CPU	Dual Core (2.0 Ghz or higher)	Triple Core (2.0 Ghz or higher)
HDD	500 GB	750+ GB
RAM	2 GB	4GB



**Try for Free**

15 Trial Available



For more information, please visit [www.fiery.com](http://www.fiery.com)

Nothing herein should be construed as a warranty in addition to the express warranty statement provided with Fiery, LLC products and services.

ColorGuard, ColorRight, Command WorkStation, ColorWise, Fiery, the Fiery Logo, Fiery Compose, Fiery Driven, the Fiery Driven logo, Fiery Edge, Fiery Essential, Fiery HyperRIP, Fiery Impose, Fiery Impress, Fiery ImageViewer, Fiery Intensify, Fiery JobExpert, Fiery JobFlow, Fiery JobMaster, Fiery JobPrep-it, Fiery Prints, the Fiery Prints logo, Fiery TrueBrand, FreeForm, MicroPress, IQ, PrintMe, RIPChips, RIP-While-Print, Spot-On, Spot Pro, and WebTools are trademarks or registered trademarks of Fiery, LLC and/or its wholly owned subsidiaries in the U.S. and/or certain other countries. All other terms and product names may be trademarks or registered trademarks of their respective owners and are hereby acknowledged.

© 2024 FIERY, LLC. ALL RIGHTS RESERVED.