

**Explore ONYX 21.1 features | Get ONYX 21.1 info today**



ONYX 21

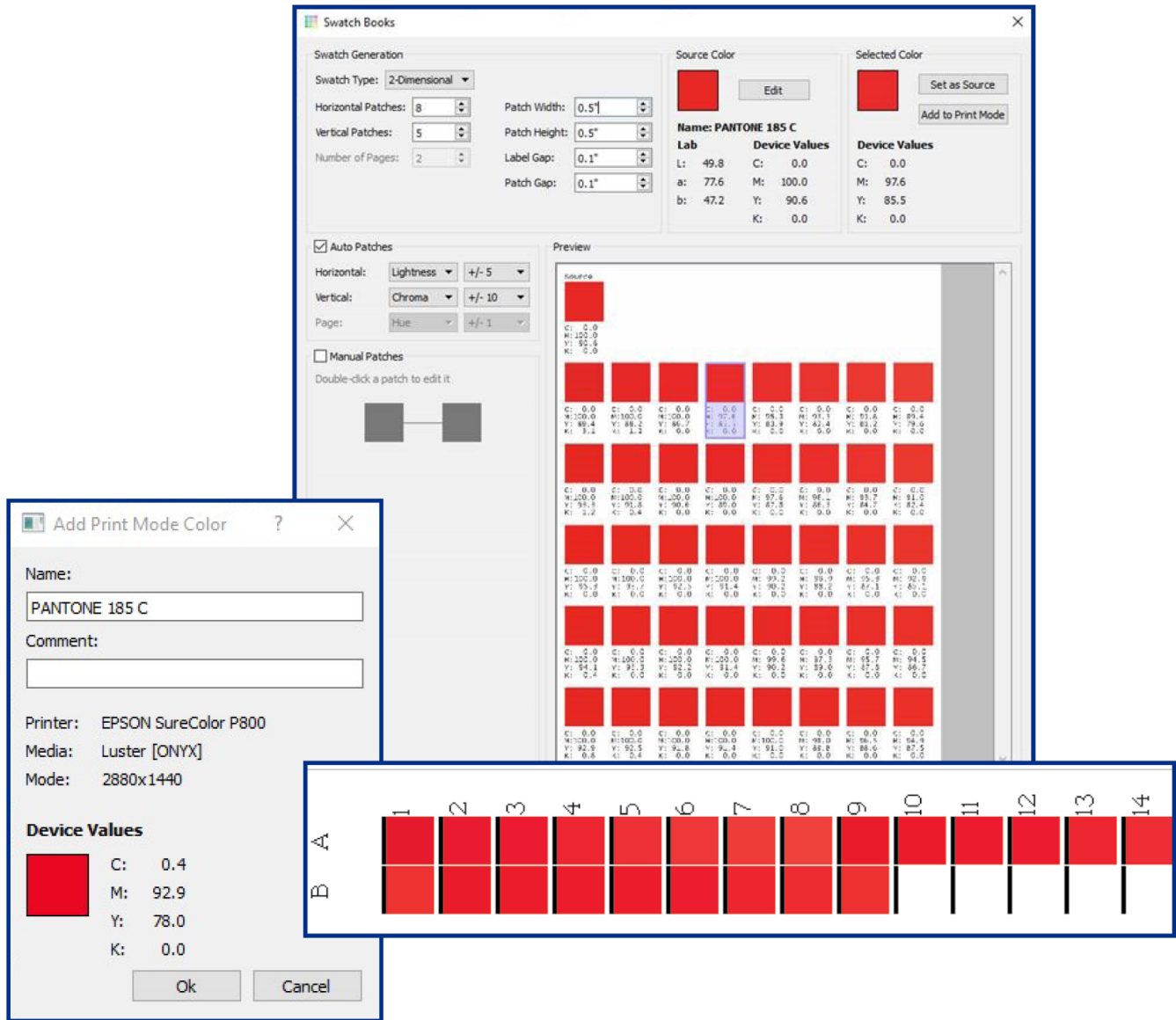
## ONYX 21.1 RIP software!

---

**Introducing new tools for a faster, easier way to match color and streamline tile-job workflows, with new dynamic print label capabilities.**

## SWATCH BOOKS 2.0

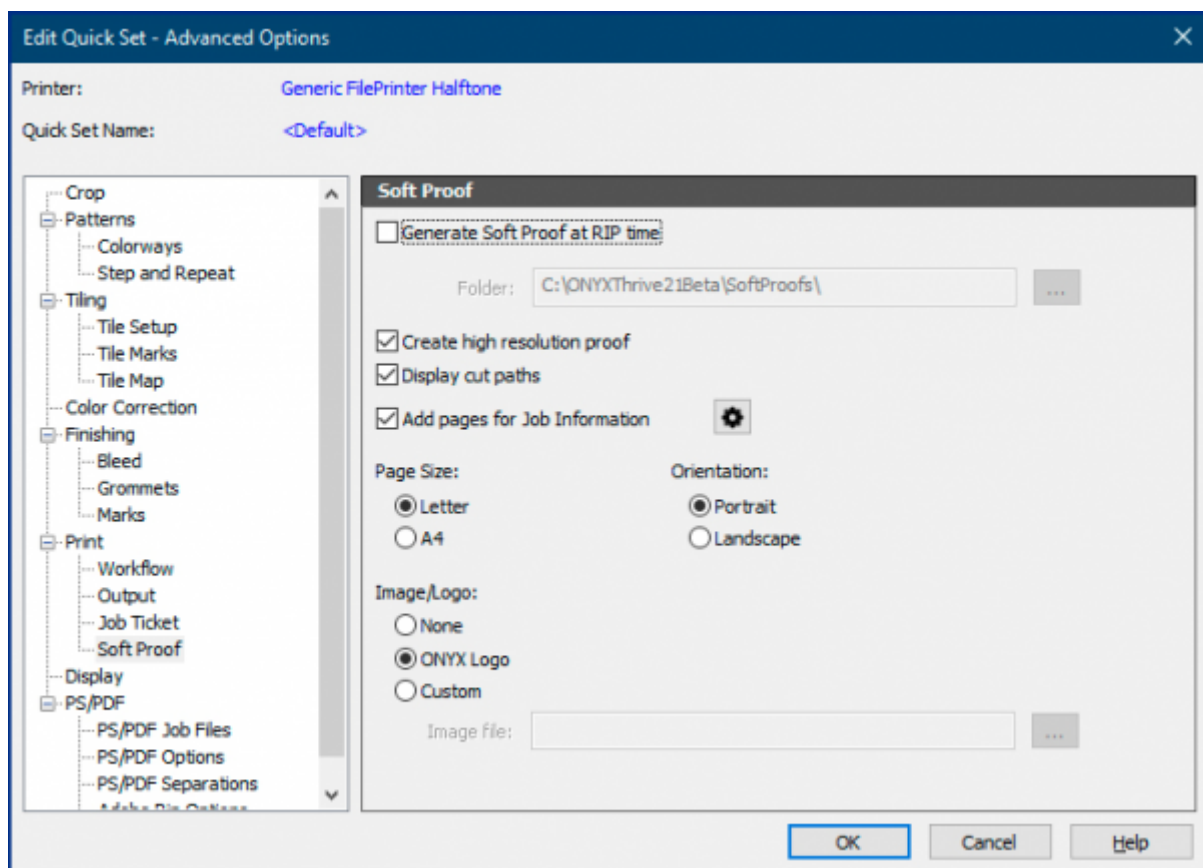
Swatch Books 2.0 boasts a new interactive visual workflow to print, scan, iterate, and report on the ideal color match with options to add print mode defined colors in a single click.



- 1 All new visual workflow**  
 Easily select swatches from all new interactive interfaces for visual or scanned swatches
- 2 New scanned swatch reporting**  
 Generate scanned swatch reports to identify the best color match
- 3 Print mode defined colors**  
 Add print mode defined colors in a single click
- 4 Fine tune color matches**  
 Quickly iterate off selected swatches to fine tune color matches

# PDF SOFT PROOFS

New for ONYX 21.1, RGB soft proofs provide quick visual reference of final output before printing.



## Save time

- Reduce customer approval timelines

## Automate with Quick Sets

- Automate soft proofs at any time using Quick Sets

## Versatile

- Show finishing marks, cut paths, and label data
- Generate spot or named color lists

# PDF TILE MAPS

Intuitive PDF Tile Maps improve efficiency and help guide installation for tiled jobs. Easily produce tile maps before, during, and after printing or automate using ONYX Quick Sets.

Job Name: ONYX\_Quality\_Evaluation  
 Overall Size: 144.00" x 109.57"  
 Total Number of Tiles: 7

C1 C2 C3 C4 C5 C6 C7

R1 R1

C1 C2

Job Name: ONYX\_Quality\_Evaluation  
 Overall Size: 144.00" x 109.57"  
 Total Number of Tiles: 7

#	Tile	Printed Size
1	R1, C1	21.43" x 109.57"
2	R1, C2	21.43" x 109.57"
3	R1, C3	21.43" x 109.57"
4	R1, C4	21.43" x 109.57"
5	R1, C5	21.43" x 109.57"
6	R1, C6	21.43" x 109.57"
7	R1, C7	21.43" x 109.57"

Notes:  
 Be sure to clean and size the wall prior to install.

## Color managed

- Produce color managed tile maps including
  - tiling lists
  - interactive individual pages

## Improve efficiencies

- Be organized, accurate and efficient with a portable PDF used for
  - installation
  - customer transparency
  - print job previews

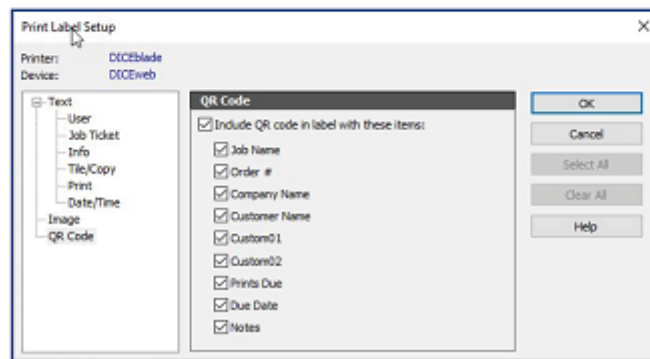
## Automate with Quick Sets

- Automate tile maps on any job using ONYX Quick Sets
- Easily see which tiles should be reproduced for future prints

---

# NEW PRINT LABEL CAPABILITIES

Dynamic print label capabilities in ONYX deliver innovative tools for print shop branding and flexibility to connect to existing business tools.



## 1 Add images

Add images to print labels on any print, including logos to increase brand visibility

## 2 Rotate 180 degrees

Rotate print labels 180 degrees on banners and canvas prints

## 3 Generate QR codes

Generate dynamic QR codes with important job information

## 4 Generate print label cut paths

New for ONYX 21.1, generate print label cut paths for any cut job

## 5 Connect to existing tools

Connect with existing business tools using Barcode images and QR codes

# EXPLORE ONYX 21.1