



Installation Instructions Hood Latch Kit

Fits 2011-2015 Polaris Pro RMK, Rush, Assault, Indy





Installation Instructions Hood Latch Kit

Fits 2011-2015 Polaris Pro RMK, Rush, Assault, Indy

Package Contents:

- 2- Small Rubber WRP Bungee Straps
- 2- Large Rubber WRP Bungee Straps
- 4-WRP Ball Studs w/ 5/16" x 18 thread (Black)
- 4-Flat Washers 5/16" ID (Black)
- 4-Jamb Nuts 5/16" x 18 thread (Black)
- 4-Paper templates for slot cutting

Required Tools:

- 5/16" Drill Bit
- Hack saw Blade or body saw
- Small round file
- 1/2" Wrench



1. Remove the (4) OEM 1/4 turn studs and clips from the side panels. These will not be used. **Image #1**

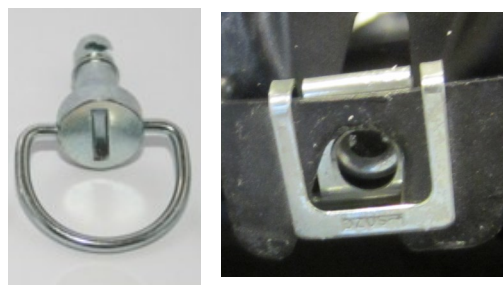


Image #1

2. Install the new WRP ball studs, flat washer and jamb nut, with washer and nut on the inside of the side panel. Use the 5/16" Drill bit to open up the hole for the 5/16" Ball Stud. Do not over tighten. **Image #2**



Image #2

3. The ball stud threads will interfere with the plastic clip mounts on the hood. The hood will not close properly. Use the hack saw blade or body saw and notch in adequate clearance as shown in **image #3**. **Dry fit Side panels to hood.**

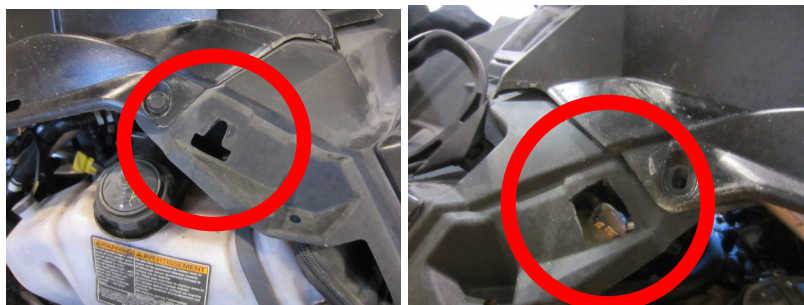


Image #3-Before

Notch as shown



Installation Instructions Hood Latch Kit

Fits 2011-2015 Polaris Pro RMK, Rush, Assault, Indy

4. **Prepare for cutting notch for bungee straps.** With the side panel in the closed position dry fit the small WRP bungee strap at the rear mounting locations. To insure that there is adequate tension on the strap you will need approximately 1/2" to 3/4" of tension for proper function. If more tension is desired then simply cut the slot further from the ball stud.

See image #4



Image #4

5. Refer to **diagram #5** for the size of the slot to be cut. I used some masking tape on the panel to draft out the size of the slot with a pen.

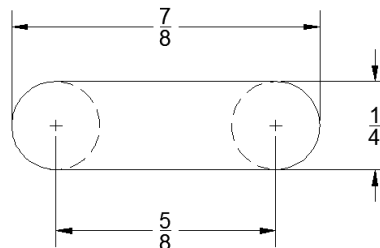


Diagram #5

6. First drill two 1/4" holes and then use the hack saw blade or body saw to connect them in order to achieve an oblong hole as shown in **image #6** and **Image #7** Use the round file to smooth out the rough cut edges in the slot.



Image #6

7. Open side panel and feed the small WRP bungee strap up through the slot, close side panel and hook onto ball stud. Repeat steps for opposite side.



Image #7



Installation Instructions Hood Latch Kit

8. **Install Front Bungee strap.** Install front ball stud in side panel using the same instructions for the rear ball stud. Using the same diagram and methods drill and cut slot for strap as shown in image #8. Make sure you leave at least 1" of tension to insure proper function.
9. Feed WRP bungee strap through the slot and latch to ball stud.
10. Repeat for opposite side.



Image #8

