

# Twist-In 2-Stage Water Filtration Unit

Model: 540372

Installation, Operation & Maintenance Guide



## Thank you for purchasing an Aquatic Life Twist-In (TI) 2-Stage Water Filtration Unit.

When maintained properly, this unit will provide you with years of service.

### OVERVIEW

The cartridges on your unit are designed for easy installation and replacement. Each cartridge connects to the filter housing by simply inserting and twisting.

It is important the cartridges be installed in the correct order to effectively filter the water.

### STAGE 1 – SEDIMENT FILTER Recommended change 3-6 months or 2,500 gallons of water

The first stage of your filter unit is a five micron sediment filter that traps sediment and other particulate matter like dirt, silt and rust which will affect the taste and appearance of your water.

### STAGE 2 – CARBON BLOCK FILTER Recommended change 3-6 months or 2,500 gallons of water (at 1 ppm chlorine)

The second stage of your filter unit is a carbon block filter. The activated carbon in the filter reduces chlorine and conditions the water.



### Contents (Model #540372)

1	TI Module	1	Easy-Tap Chrome Faucet
1	TI Sediment Filter Cartridge	1	Blue Tubing, 1/4" x 4 FT.
1	TI Carbon Block Cartridge	1	Yellow Tubing, 1/4" x 4 FT.
1	Under Sink Water Line Adapter	1	Installation, Operation and Maintenance Guide

### Tools & Materials Recommended for Installation

1 1/4" Adjustable Wrench	Thread Seal Tape
1/8", 1/4", & 1/2" Drill Bits for metal (for faucet hole)	Masking Tape & Pencil
Phillips Screwdriver	Electric Drill



**WARNING:** Please read carefully before proceeding with installation. Your failure to follow any attached instructions and operating parameters may lead to the product's failure.



See Installation Video

For technical assistance or warranty issues, please contact Aquatic Life at

**1-888-548-3480 or 1-818-768-6943**

or email

**customersupport@aquaticlife.com**

*Thank You!*

## OPERATING GUIDELINES

**DO NOT** use with water that is micro-biologically unsafe or of unknown quality without adequate disinfection before or after the unit.

**The maximum incoming water pressure for the unit is 80 PSI.**

If the pressure is more than 80 PSI, a pressure regulator is required.

**DO NOT** operate the unit unattended.



**NOTE:** Filter cartridge life may vary based on local water conditions and amount of use.

## WATER SUPPLY INSTALLATION

This Aquatic Life TI Filter Unit includes a special 1/2" under sink water line adapter to make it easy to tap into your existing cold water plumbing under your sink.

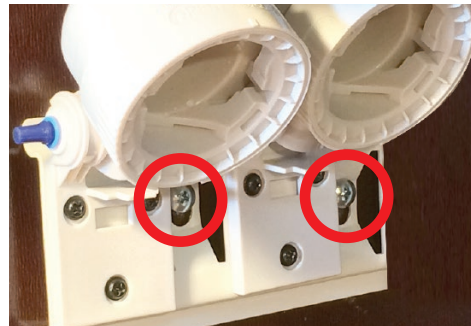
Hand tightening this adapter is usually sufficient. However, if needed, use a 1 1/4" adjustable wrench.



## MOUNTING THE FILTRATION UNIT

The Aquatic Life TI Filtration Unit is designed to be mounted to a secure surface. This will allow for the cartridges to easily be replaced as needed.

The TI module includes a metal bracket with screw holes for easy hanging.



Use screws designed for the type of surface that the TI module will hang on. Once the TI module is hanging on the screws, tighten the screws to secure the TI module.



**NOTE:** If your model includes rubber plugs on any of the ports, it is now OK to remove the plug by simply pulling it out.

## FAUCET INSTALLATION

The faucet may be installed on any flat surface. Always check the underside of the desired location to make sure it is clear of obstructions.



**NOTE:** Most sinks are pre-drilled with a 1 1/4" diameter hole that can be used for the faucet. If your sink does not have a hole, you will need to drill one.

### Step 1

Determine the desired location for your faucet on your sink surface.

### Step 2

Place a piece of masking tape on the sink to determine hole location. Mark the center of the hole to be drilled on the tape.

### Step 3

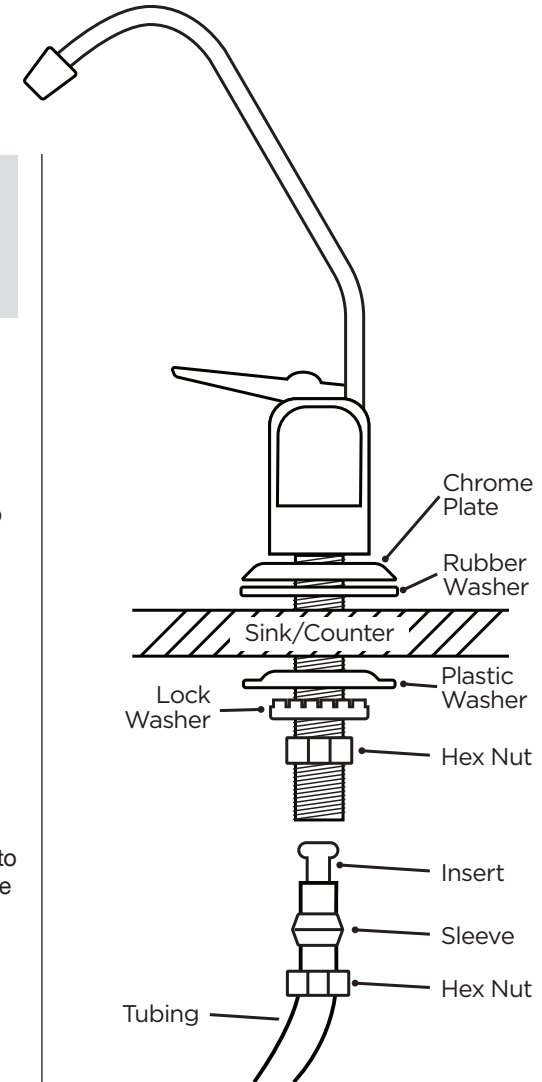
Use a variable speed drill on low speed to drill an 1/8" hole in the center of the marked location.

### Step 4

Enlarge the hole using a 1/4" drill bit followed by a 1/2" drill bit. Using the different size bits to enlarge the hole will make it easier to achieve the final 1/2" diameter hole size.

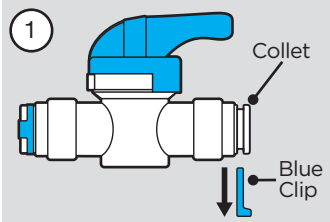
### Step 5

Assemble the faucet as shown in the diagram (right).

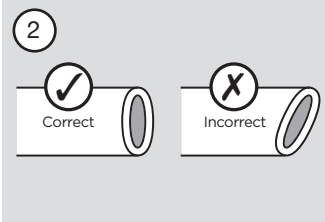


**CAUTION!** Once drilled, the hole in the sink might be sharp. Use caution when inserting the faucet stem into the hole.

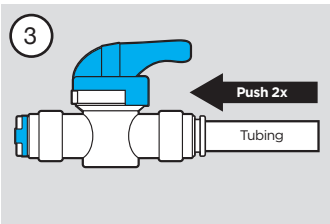
## USING THE BUDDIE FIT™ PRESS FITTINGS



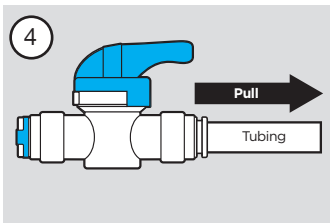
Remove the blue clip from the press fitting.



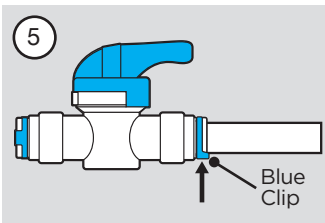
Cut tubing evenly and not at an angle.



Push the tubing into the fitting. You will hit the first stop. The tubing is still not secured properly. Push the tubing a second time and you will feel the tubing insert completely (5/8") into the press fitting.



Pull back on the tubing to ensure it is secure.



Insert the locking blue clip back onto the press fitting.



See Video



**NOTE:** To remove a piece of tubing, remove the blue clip and press down on the collet where the tubing enters the fitting. While the collet is depressed, remove the tubing from the fitting.



**NOTE:** We recommend cutting the tubing with a razor blade or something similar, so the tubing is not pinched. If the tubing is pinched, it will not seal properly. All tubing connections will have a "double push" into the connectors. You should feel a two-step insert to verify the tubing is inserted completely into the connectors.

## INSTALL THE COLOR-CODED TUBING

The Aquatic Life TI units include color coded tubing to help easily identify filtered and incoming water. This also makes it easier to correctly connect the tubing to the unit.

Refer to the instructions on how to use Buddie Fit press fittings (left) before installing the tubing.

### Step 1

Connect one end of the yellow tubing to the incoming water supply. This will be the under sink water adapter.



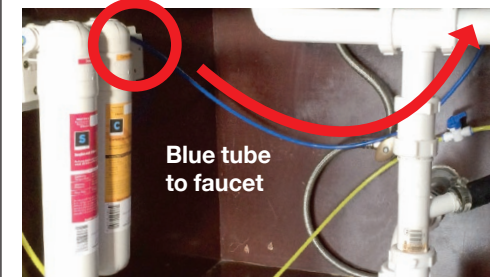
### Step 2

Connect the other end of the yellow tubing to the port on the TI module closest to the sediment cartridge.



### Step 3

Connect one end of the blue tubing to the filtered water port on the TI module. The other end will connect to easy-tap chrome faucet. Refer to page 3 faucet installation details.





## CARTRIDGE INSTALLATION

Each TI cartridge uses a triple gasket seal to prevent water leaks.

The TI module heads are equipped with a valve that automatically turns off the water supply to each filter cartridge when you remove the cartridge. To make the removal of the filter cartridges easier, the heads and cartridges can be tilted up as shown (below).



Install: Twist right



Remove: Twist left



**NOTE:** Return new cartridge to down position after installation.



**NOTE:** Cartridges must be installed in the correct order. Match the cartridge label/color to the labels on TI module heads. Failure to do so will result in loss of filter performance and can shorten the lifespan of the filter.

## PREPARING CARTRIDGES FOR USE



**IMPORTANT:** Flush carbon cartridge prior to use.

### THE CARBON CARTRIDGE MAY CONTAIN CARBON DUST THAT MUST BE FLUSHED OUT PRIOR TO INSTALLING THE MEMBRANE.

After installing the filtration unit, run water through the faucet until it becomes clear. The water is now ready to use.

## UNIT MAINTENANCE

**Recommended change 3-6 months or 2,500 gallons total or 650 gallons of filtered water**

TI Sediment Filter Cartridge (Item # 330377)  
TI Carbon Block Cartridge (Item # 330379)



**NOTE:** The life span of the filter cartridges are dependent on multiple factors. These include the quality of the incoming water supply (TDS levels, chlorine, etc.) as well as the amount of use. Our recommended replacement intervals are based on average usage.



**MAINTENANCE REMINDERS**  
The Aquatic Life TI cartridges include a place where you can write the date of installation to make it easy to know when a cartridge needs to be replaced.

## PURCHASE CONSIDERATIONS

Visit [www.aquaticlife.com](http://www.aquaticlife.com) for the full line of Aquatic Life TI products and accessories.



**Sediment Filter Value Pack  
(Item # 330387)**

Save money and always have a replacement sediment cartridge on hand.



**Carbon Block Filter Value Pack  
(Item # 330389)**

Save money and be prepared with a new carbon block cartridge on hand.



**Tubing – 50 Ft rolls  
Blue (Item # 500297)  
Yellow (Item # 500299)**



## PRODUCT REGISTRATION

Thank you for purchasing an Aquatic Life product—we know you'll enjoy it!

### BENEFITS OF REGISTRATION:

#### Confirmation of Ownership

Provides a record in the event you need to contact us about your product in the future.

#### Your Safety

Allows us to contact you with important product notifications.

#### Improved Product Support

Helps us continue to tailor our products and services to meet your needs.

**Register Online at  
[www.aquaticlife.com](http://www.aquaticlife.com)**

Lifetime Products is committed to reducing our carbon footprint and we appreciate your time in registering electronically. If you do not have access to the Internet, you can call us at **888-548-3480**.

# Twist-In 2-Stage Water Filtration Unit

Model: 540372

Installation, Operation & Maintenance Guide



## 3-YEAR LIMITED WARRANTY

Lifetime Products LLC warrants that this filtration unit (excluding cartridges and membrane) shall be free from defective components and leaks or cracks due to defects in materials or workmanship for a period of three (3) years from the date of purchase. If a defect is shown, Lifetime Products LLC will, at Lifetime Product's sole discretion, either repair or replace the product without charge. No cash refunds will be made. This warranty is provided solely to the original consumer purchaser of the product and may not be transferred or assigned. If Lifetime Products chooses to replace the equipment, Lifetime Products may replace it with reconditioned equipment. Parts used in repairing or replacing the equipment will be warranted for 90 days from the date the equipment is returned to you or the remainder of the original warranty period, whichever is longer.

This warranty does not apply to damage resulting from accident, misuse, abuse, lack of reasonable care, failure to follow safety and installation instructions.

This warranty will be void if defects occur due to failure to observe the following conditions:

The Aquatic Life TI Unit should only be connected to a potable municipal or potable well cold water supply.

Do not use with water that is of unknown quality without adequate disinfection before or after the unit.

- Incoming total dissolved solids (TDS) not to exceed 1,800 ppm.
- Incoming water to the RO cannot exceed 100°F.
- Incoming water pressure must be between 40 and 80 PSI.
- Incoming water pH must not be lower than 2 or higher than 11.
- Incoming water iron content must be less than 0.2 ppm.
- Incoming water hardness must not exceed 10 grains per gallon or 170 ppm.
- Do not use outdoors or in a location that is subjected to direct sunlight or freezing.

This warranty will not be effective unless and until the Aquatic Life product is shown to have been used in accordance with the installation and maintenance instructions accompanying the product.

THIS CONSTITUTES LIFETIME PRODUCTS ENTIRE WARRANTY AND LIFETIME PRODUCTS MAKES NO OTHER WARRANTIES, WHETHER EXPRESS OR IMPLIED, WITH RESPECT TO THE PRODUCT. LIFETIME PRODUCTS, LLC SPECIFICALLY DISCLAIMS ANY AND ALL IMPLIED WARRANTIES, INCLUDING, WITHOUT LIMITATION, WARRANTIES OF MERCHANTABILITY AND FITNESS FOR A PARTICULAR PURPOSE. IF LIFETIME PRODUCTS, LLC CANNOT LAWFULLY DISCLAIM IMPLIED WARRANTIES UNDER THIS LIMITED WARRANTY, ALL SUCH WARRANTIES, INCLUDING WARRANTIES OF MERCHANTABILITY AND FITNESS FOR A PARTICULAR PURPOSE ARE LIMITED IN DURATION TO THE DURATION OF THIS WARRANTY.

LIFETIME PRODUCTS IS NOT RESPONSIBLE FOR DIRECT, SPECIAL, INCIDENTAL OR CONSEQUENTIAL DAMAGES RESULTING FROM ANY BREACH OF WARRANTY OR CONDITION, OR UNDER ANY OTHER LEGAL THEORY. LIFETIME PRODUCTS, LLC EXPRESSLY DISCLAIMS ALL ALLEGED DAMAGES FOR LOSS OF MARINE LIFE, PERSONAL INJURY, AND/OR PROPERTY DAMAGE.

Some states and provinces do not allow the exclusion or limitation of incidental or consequential damages or exclusions or limitations on the duration of implied warranties or conditions, so the above limitations or exclusions may not apply to you. This warranty gives you specific legal rights, and you may also have other rights that vary by state or province.

Lifetime Products, LLC shall not have any obligations under this warranty unless the owner notifies Lifetime Products, LLC in writing of any alleged defect(s) within 30 days of discovery of the defect(s).

Any notice to Lifetime Products, LLC must be delivered by United States or electronic mail to the following address: U.S. Mail: Lifetime Products, LLC, 9710 Klingerman St., S. El Monte, CA 91733 or electronic mail: [customersupport@aquaticlife.com](mailto:customersupport@aquaticlife.com). Lifetime Products shall be allowed a reasonable period of time to investigate any warranty claim and to perform any testing Lifetime Products deems necessary to determine the cause of the defect. This warranty shall be interpreted under the laws of the State of California.

**Lifetime Products, LLC**  
9710 Klingerman St. | S. El Monte, CA 91733  
Toll Free: 888-548-3480 | Local: 818-768-6943

[customersupport@aquaticlife.com](mailto:customersupport@aquaticlife.com)

[www.aquaticlife.com](http://www.aquaticlife.com)