



**WARNING:** Please read carefully before proceeding with installation. Your failure to follow any attached instructions and operating parameters may lead to the product's failure.

**Thank you for purchasing an Aquatic Life Reverse Osmosis Tank Add-on Kit. When maintained properly, this unit will provide you with years of quality filtered water.**



**SCAN CODE TO VIEW  
 INSTALLATION VIDEO**



**OVERVIEW**

Reverse Osmosis (RO) water is a process of removing contaminants from tap water using a special semipermeable membrane.

The process works quite slowly, so it is often desired to collect the water in a storage tank so that the water is available on demand when needed.

This Kit includes everything needed to add drinking water to most existing RO Filtration Units.

**Contents (Model #540491)**

1	Under Sink Water Line Adapter Valve (½" Female x ½" Male x ¼" Press Fit)	1	Polishing Carbon Cartridge
1	Pressure Sensitive Solenoid	2	Carbon Cartridge Clips
1	Chrome Faucet	2	¼" MPT x ¼" Press Fit Adapters
1	In-line Check Valve	1	Set Mounting Screws
1	Drain Saddle	1	Roll Plumbers Tape
2	¼" Press-Fit Tees	1	Yellow Tubing ¼" x 4 Ft
1	Pressure Tank Valve	1	Blue Tubing ¼" x 4 Ft
1	Water Storage Tank	1	Installation, Operation and Maintenance Guide
1	¼" Manual On/Off Valve		

**Tools & Materials Recommended for Installation**

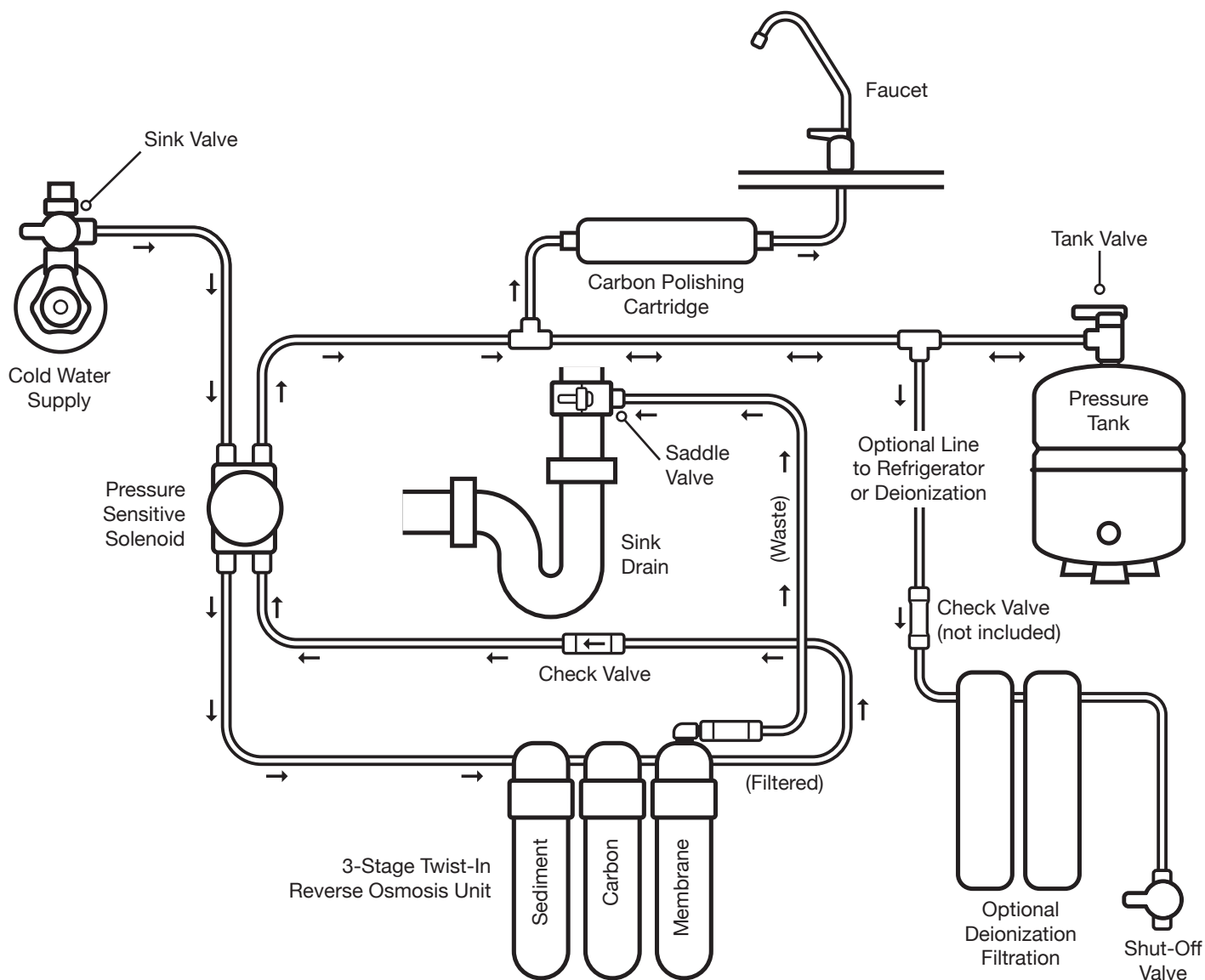
1 ¼" Adjustable Wrench	Electric Drill
7/16" Open End Wrench	Masking Tape & Pencil
1/8", 1/4", 1/2" Drill Bits for metal (for faucet hole and drain hole)	Flashlight
Phillips Screwdriver	

**OPERATING GUIDELINES**

**DO NOT** use with water that is micro-biologically unsafe or of unknown quality without adequate disinfection before the unit. Refer to your Reverse Osmosis Filtration Unit instructions for specific operating parameters.

**PLUMBING DIAGRAM**

Regardless of your individual RO Filtration Unit looks, the water path will be the same for installation. It is important to follow the path correctly to ensure proper operation.





### WATER SUPPLY INSTALLATION

Connect the Under Sink Water Line Adapter Valve to the cold water supply under the sink. This Adapter will be placed between the water supply and the line that goes to the existing sink faucet. Hand tightening this adapter is usually sufficient; however, if needed, use a 1 1/4" adjustable wrench

### DRAIN SADDLE INSTALLATION

All Reverse Osmosis units will produce waste water. The waste water contains high concentrations of TDS, but would be acceptable to use on plants. Depending on your installation, you may want to save the waste water for other uses.

Another option is to connect the Reverse Osmosis waste line to the drain under a sink. We have included a Drain Saddle that will fit standard size sink drain pipes.



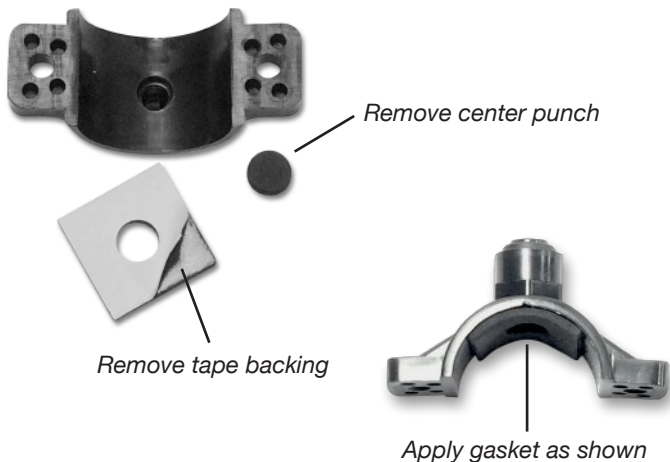
**CAUTION:** If installing with a garbage disposal the saddle must be above the disposal. If a second sink drain is available, install it above the cross bar on the second sink drain. Installation of the Drain Saddle below a disposal may cause the drain to plug.

**Step 1** – Locate all pieces of the Drain Saddle

- 1 – Bracket with 1/4" press fit opening
- 1 – Bracket – solid
- 2 – Screws & Nuts
- 1 – Foam gasket



**Step 2** – Remove the center punch and peel tape backing from the foam gasket. Apply the gasket to bracket



### DRAIN SADDLE INSTALLATION (cont.)

**Step 3** – The Drain Saddle must be mounted at least 2" above the nut of the P-trap or cross bar from the garbage disposal to insure proper drainage. Locate where the Drain Saddle will be mounted and mark with a piece of masking tape and pencil.



**Step 4** – Use a 1/4" drill bit to make a hole in the drain pipe where you marked it on the masking tape. Remove the masking tape and clear any plastic burs/shavings from around the new hole in the drain pipe.



**Step 5** – Align the Drain Saddle with the new hole in the drain pipe using a screwdriver through the Drain Saddle. Attach the solid Semicircle Bracket to the Bracket with the 1/4" hole and loosely tighten the nuts by hand.



**Step 6** – Tighten the 2 screws and nuts using a Phillips screwdriver and 7/16" open-end wrench.

## FAUCET INSTALLATION

The faucet may be installed on any flat surface. Always check the underside of the desired location to make sure it is clear of interference.



**NOTE:** Most sinks are pre-drilled with a 1 ¼" diameter hole that can be used for the faucet. Often if the hole is not being used, a plug is inserted into the hole. If you do not have a hole or it is already being used for a soap dispenser, sprayer or dishwasher vent, you will need to create a new hole.



**Step 1** – Determine the desired location for your faucet on your sink surface.

**Step 2** – Place a piece of masking tape on determined location for the hole to be drilled. Mark the center of the hole to be drilled on the tape.

**Step 3** – Use a variable speed drill on low speed and drill a 1/8" hole in the center of the mark on the masking tape.

**Step 4** – Enlarge the hole using a 1/4" drill bit followed by a 1/2" drill bit. Using the different size bits to enlarge the hole will make it easier to achieve the final ½" diameter hole size.

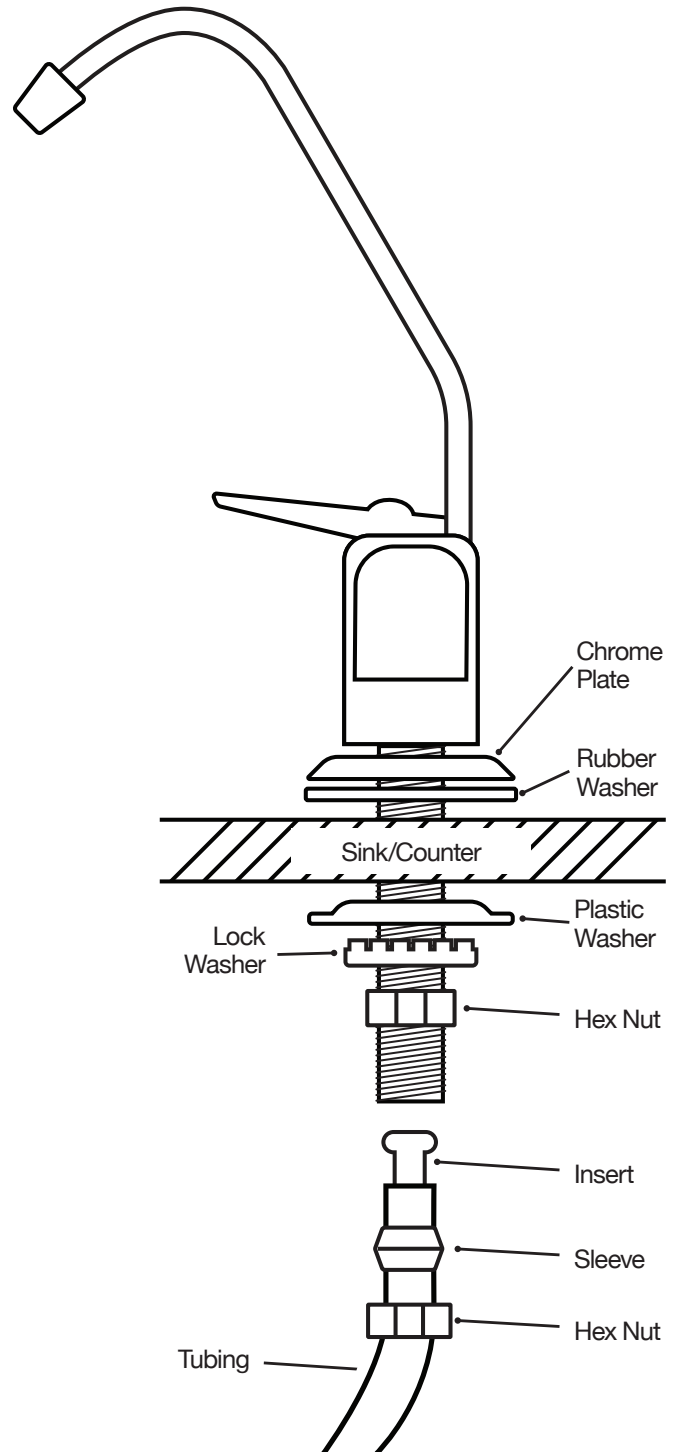


**CAUTION:** Once drilled, the hole in the sink might be sharp. Use caution when inserting the faucet stem into the hole.



**NOTE:** Drilling into a sink may require special drill bits, especially for marble, porcelain or ceramic style sinks. Check with the sink supplier for proper drilling requirements.

**Step 5** – Assemble the faucet as shown in the diagram.



### POLISHING CARTRIDGE INSTALLATION

The Polishing Cartridge contains carbon that will offer a finished taste to the drinking water. This is the last cartridge to filter the water before the water flows from the newly-installed Chrome Faucet.

**Step 1** – Apply three rounds of the plumbers tape to the 1/4" MPT x 1/4" Press Fit Adapters and then thread the Adapters into the ends of the Polishing Cartridge. Use an Adjustable Wrench to tighten. Use caution not to over-tighten the plastic.



**Step 2** – Choose a location that is easy to access for when the cartridge needs to be replaced and secure the two clips to the cabinet wall using the screws provided.



### WATER STORAGE TANK INSTALLATION

The Water Storage Tank included with your kit is more than meets the eye. Inside the tank is a bladder made of a butyl rubber designed for drinking water applications. Water will never touch the actual metal tank as it enters and leaves the tank. To learn more about the Tank, refer to the section on Unit Maintenance.

**Step 1** – Apply three rounds of the plumbers tape to the nipple on the top end of the Water Storage Tank.

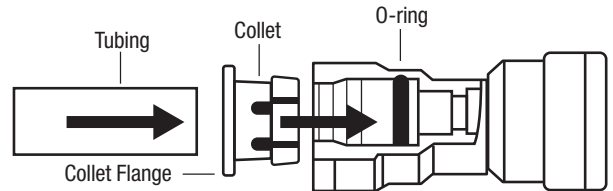


**Step 2** – Thread the Pressure Tank Valve onto the 1/4" nipple on the end of the Water Storage Tank and hand tighten.

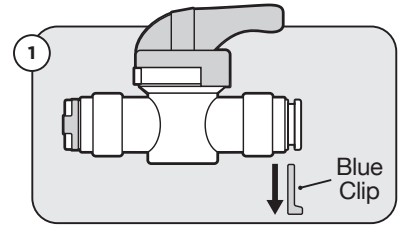


### HOW TO USE THE BUDDIE FIT™ PRESS FITTINGS

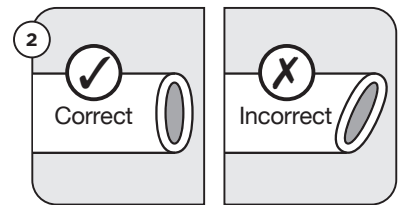
To make easy 1/4" tubing connections with the included Buddie Fit™ press fittings, follow these simple steps:



1. Remove the blue clip from the press fitting.



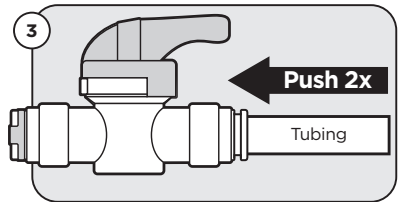
2. Make sure the end of the tubing is cut evenly and not at an angle.



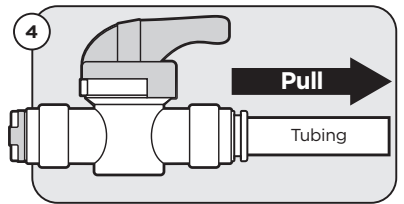
3. Push the tubing into the fitting. You will hit the first stop.

**The tubing is still not secured properly.**

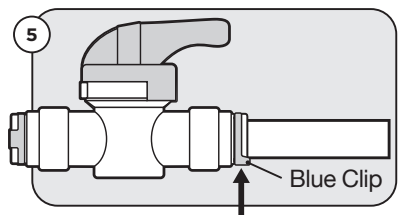
**Push the tubing a second time** and you will feel the tubing insert completely into the press fitting.



4. Pull back on the tubing to ensure it is secure.



5. Insert the locking blue clip back onto the end of the press fitting.



**NOTE:** To remove tubing, remove the blue clip. Press in and hold the collet while pulling out tubing

**NOTE:** We recommend cutting the tubing with a straight-edged razor blade or a tool designed to cut flexible water line.

## INSTALLING THE TUBING & VALVES

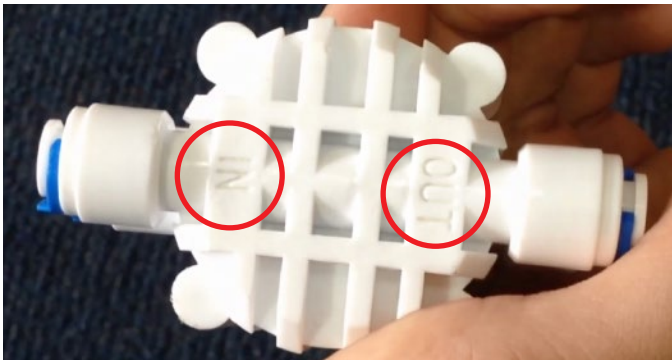
Tubing is included with the kit. Yellow tubing is for supply water and Blue tubing is for filtered water.



**WARNING: DO NOT USE SCISSORS** to cut the tubing. Scissors will pinch the tubing and it will leak once installed. Only use a razor blade or tool designed for cutting flexible water line tubing.



**NOTE:** The Pressure Sensitive Solenoid has four ports. We identify the ports based on labels, "IN" and "OUT" and if the port is close to the metal screws on the Solenoid.



**Step 1** – Install a piece of yellow tubing between the Under Sink Water Line Adapter Valve and the "IN" port (non-screw side) of the Pressure Sensitive Solenoid.

**Step 2** – Install a piece of yellow tubing between the "OUT" port (non-screw side) of the Pressure Sensitive Solenoid and the Sediment Filter on your existing RO Filtration Unit.

**Step 3** – There are two ports on the RO Membrane housing. Install a piece of your existing RO Unit tubing between the waste port on the membrane housing and the Drain Saddle.

**Step 4** – Install a piece of blue tubing between the filtered water port on the RO Membrane housing and the "IN" port (screw side) of the Pressure Sensitive Solenoid. Once installed, cut the blue tubing and install the In-line Check Valve with the arrow pointing toward the Pressure Sensitive Solenoid.

## INSTALLING THE TUBING & VALVES (cont.)

**Step 5** – Install a piece of blue tubing between the "OUT" port (screw side) of the Pressure Sensitive Solenoid and one of the included ¼" Press-Fit Tees. Refer to the diagram for details.

**Step 6** – Install a piece of blue tubing between the other end of the ¼" Press-Fit Tee from Step 5 and the Pressure Tank Valve.

**Step 7** – Install a piece of blue tubing between the ¼" Press-Fit Tee and one end of the Polishing Cartridge.

**Step 8** – Install a piece of blue tubing between the other end of the Polishing Cartridge and the Chrome Faucet. The Chrome Faucet uses a compression fitting, not press-fit. Refer to the diagram for the Chrome Faucet installations.



**TIP!** After installing the tubing, go back and trim excess tubing.



## PREPARING CARTRIDGES FOR USE

**Step 1** – Turn on the water and allow the Water Storage Tank to fill completely. This may take several hours.

**Step 2** – Turn off the water supply to the RO Filtration Unit at the Under Sink Water Line Adapter Valve.

**Step 3** – Open the water tap on the Chrome Faucet and drain all of the water from the Water Storage Tank.

**Step 4** – Repeat steps 1 through 3 a second time.

## UNIT MAINTENANCE

### Every Six Months

**Step 1** – Replace the Sediment and Carbon Cartridges in your RO Filtration Unit (or as directed by the manufacturer of your RO Unit).

**Step 2** – Replace the Carbon Polishing Cartridge.  
 Aquatic Life Item# 330250  
 UPC# 810957012502

### Every Year

#### Sanitation

**Step 1** – Turn off the water supply to the RO Filtration Unit at the Under Sink Water Line Adapter Valve.

**Step 2** – Open the water tap on the Chrome Faucet and drain all of the water from the Water Storage Tank.

**Step 3** – Disconnect the Blue tubing from the valve at the top of the Water Storage Tank. Using a clean eye dropper insert ½ teaspoon of hydrogen peroxide or common household bleach into the Blue tube. This will flow into the tank once water is turned back on to unit. Reattach Blue tube to the ball valve. Follow the startup procedure and drain two full tanks of water.

**Step 4** - Install a new Polishing Carbon Cartridge.

#### Pressure Check

**Step 1** – Turn off the water supply to the RO Filtration Unit as the Under Sink Water Line Adapter Valve.

**Step 2** – Open the water tap on the Chrome Faucet and leave it in the open position.

**Step 3** – Locate the tire pressure style valve on tank (usually under a blue cap). Connect a bicycle hand pump to the valve and start pumping - as you are pumping air into the tank you will see the water begin to flow out of the faucet. Keep pumping until no more water comes out the faucet **(DO NOT TO OVER FILL THE TANK WITH AIR)**.

**Step 4** - Once all the water is out of the tank (shake the tank to make sure), you will need to check how much air you've pumped into the tank using a Digital Tire Gauge. You will need to set the air pressure to 5 to 7 PSI.

**Step 5** - Once pressure is set; turn off the Chrome Faucet and turn the water supply back on. Allow time for the tank to refill.

### Every Two Years

Replace the Membrane Cartridge in your RO Filtration Unit (or as directed by the manufacturer of your RO Unit).

## CONNECTING A REFRIGERATOR OR ADDITIONAL FILTRATION

In some instances, it may be desirable to add additional dispensers or further filtration to utilize the filtered water in the Storage Tank. For this reason, an additional Tee is included in the parts pack.

### Refrigerator Water/Ice Connection

**Step 1** – Install the included Tee in the Blue Water Tubing 8-12 inches from where the tubing connects to the top of the Water Storage Tank.

**Step 2** – Connect the open port on the Tee to your refrigerator as directed by the manufacturer of your appliance.

### Deionization Filtration

In applications for hydroponics and fish keeping, it may be desired to remove the remaining Total Dissolved Solids (TDS) from the RO Filtered Water. This is done with the use of a Deionization Filter.

**Step 1** – Install the included Tee in the Blue Water Tubing 8-12 inches from where the tubing connects to the top of the Water Storage Tank.

**Step 2** – Connect the open port on the Tee to the water in port on the Deionization Filter. It will be important to install a check valve before the tubing enters the Deionization Unit. In addition, a Shut-Off valve (included) will be required on the output side of the Deionization Unit.

## TROUBLESHOOTING

SYMPTOM	CHECK
System runs too much	Check Installation of Pressure Sensitive Solenoid Low air pressure in Water Storage Tank Bladder failure in Water Storage Tank
Low Storage Capacity in Tank	Under inflated Water Storage Tank Bladder failure in Water Storage Tank
Water Storage Tank Heavy (full) but no water	Bladder failure in Water Storage Tank
Tank takes longer than normal to fill	Sediment, Carbon or Membrane need to be replaced
Water Storage Tank won't hold water	Check Valve installed properly Pressure Sensitive Solenoid installed properly Faucet is open

## PRODUCT REGISTRATION

Thank you for purchasing an Aquatic Life product — we know you'll enjoy it!

### BENEFITS OF REGISTRATION:

#### Confirmation of Ownership

Provides a record in the event you need to contact us about your product in the future.

#### Your Safety

Allows us to contact you with important product notifications.

#### Improved Product Support

Helps us continue to tailor our products and services to meet your needs.

#### Register Online at [www.aquaticlife.com](http://www.aquaticlife.com)

Lifetime Products is committed to reducing our carbon footprint and we appreciate your time in registering electronically.

If you do not have access to the Internet, you can call us at 888-548-3480.

## ONE YEAR LIMITED WARRANTY (Cont.)

Lifetime Products LLC warrants that this Reverse Osmosis Tank Add-on Kit shall be free from defective components and leaks or cracks due to defects in materials or workmanship for a period of one (1) year from the date of purchase. If a defect is shown, Lifetime Products LLC will, at Lifetime Product's sole discretion, either repair or replace the product without charge. No cash refunds will be made. This warranty is provided solely to the original consumer purchaser of the product and may not be transferred or assigned. If Lifetime Products chooses to replace the equipment, Lifetime Products may replace it with reconditioned equipment. Parts used in repairing or replacing the equipment will be warranted for 90 days from the date the equipment is returned to you or the remainder of the original warranty period, whichever is longer.

This warranty does not apply to damage resulting from accident, misuse, abuse, lack of reasonable care, failure to follow safety and installation instructions.

This warranty will be void if defects occur due to failure to observe the following conditions:

1. The Reverse Osmosis Tank Add-on Kit should only be connected to a potable municipal or well cold water supply.
2. Do not use with water that is of unknown quality without adequate disinfection before or after the system.
3. Incoming water to the RO cannot exceed 100°F.
4. Incoming water pressure must be between 40 and 100 PSI.
5. Incoming water pH must not be lower than 2 or higher than 11.
6. Incoming water iron content must be less than 0.2 ppm.
7. Do not use outdoors or in a location that subjected to direct sunlight or freezing.

This warranty will not be effective unless and until the Aquatic Life product is shown to have been used in accordance with the installation and maintenance instructions accompanying the product.

THIS CONSTITUTES LIFETIME PRODUCTS ENTIRE WARRANTY AND LIFETIME PRODUCTS MAKES NO OTHER WARRANTIES, WHETHER EXPRESS OR IMPLIED, WITH RESPECT TO THE PRODUCT. LIFETIME PRODUCTS, LLC SPECIFICALLY DISCLAIMS ANY AND ALL IMPLIED WARRANTIES, INCLUDING, WITHOUT LIMITATION, WARRANTIES OF MERCHANTABILITY AND FITNESS FOR A PARTICULAR PURPOSE. IF LIFETIME PRODUCTS, LLC CANNOT LAWFULLY DISCLAIM IMPLIED WARRANTIES UNDER THIS LIMITED WARRANTY, ALL SUCH WARRANTIES, INCLUDING WARRANTIES OF MERCHANTABILITY AND FITNESS FOR A PARTICULAR PURPOSE ARE LIMITED IN DURATION TO THE DURATION OF THIS WARRANTY.

LIFETIME PRODUCTS IS NOT RESPONSIBLE FOR DIRECT, SPECIAL, INCIDENTAL OR CONSEQUENTIAL DAMAGES RESULTING FROM ANY BREACH OF WARRANTY OR CONDITION, OR UNDER ANY OTHER LEGAL THEORY. LIFETIME PRODUCTS, LLC EXPRESSLY DISCLAIMS ALL ALLEGED DAMAGES FOR LOSS OF MARINE LIFE, PERSONAL INJURY, AND/OR PROPERTY DAMAGE.

Some states and provinces do not allow the exclusion or limitation of incidental or consequential damages or exclusions or limitations on the duration of implied warranties or conditions, so the above limitations or exclusions may not apply to you. This warranty gives you specific legal rights, and you may also have other rights that vary by state or province

Lifetime Products, LLC shall not have any obligations under this warranty unless the owner notifies Lifetime Products, LLC in writing of any alleged defect(s) within 30 days of discovery of the defect(s).

Any notice to Lifetime Products, LLC must be delivered by United States or electronic mail to the following address: U.S. Mail: Lifetime Products, LLC, 9710 Klingerman St., S. El Monte, CA 91733 or electronic mail: [customersupport@aquaticlife.com](mailto:customersupport@aquaticlife.com). Lifetime Products shall be allowed a reasonable period of time to investigate any warranty claim and to perform any testing Lifetime Products deems necessary to determine the cause of the defect. This warranty shall be interpreted under the laws of the State of California.

Lifetime Products, LLC  
9710 Klingerman St. | S. El Monte, CA 91733  
**Toll Free: 888-548-3480 | Local: 818-768-6943**  
**[customersupport@aquaticlife.com](mailto:customersupport@aquaticlife.com)**  
**[www.aquaticlife.com](http://www.aquaticlife.com)**