

# INTERNAL MINI PROTEIN SKIMMER 115

## DESCRIPTION

- SUBMERSIBLE PROTEIN SKIMMER DESIGNED FOR AQUARIUMS UP TO 115 LITERS (30 GALLONS)

## UPC#

- 810957011147

## APPEARANCE

- TRANSLUCENT BLACK PLASTIC HOUSING
- CLEAR PLASTIC COLLECTION CUP
- BLACK RUBBER SUCTION CUPS

## ELECTRICAL & OPERATING REQUIREMENTS

- RATED VOLTAGE: 120 VOLT AC
- RATED CYCLE: 60 HZ
- TOTAL WATTAGE: 8 W
- PUMP SAFETY APPROVAL RATING: CE
- POWER CORD LENGTH: 1.4 METERS (4.5 FT)
- COLLECTION CUP VOLUME: 100 ML (3.4 FL.OZ)
- MIN. CLEARANCE ABOVE WATER LINE: 9.5 CM (3.75 IN)

## SIZE & WEIGHT

- DISPLAY PACKAGING**
  - 9.5 X 5.063 X 4.125 IN
  - 24.13 X 12.86 X 10.48 CM
  - 1.90 LBS / 0.86 KG
- PRODUCT (WITH COLLECTION CUP)**
  - 10.625 X 3.25 X 3.5 IN
  - 26.99 X 8.26 X 8.89 CM
  - 1.55 LB / 0.70 KG

## PACKAGING

- DISPLAY BOX**
  - CORRUGATED, FIVE COLOR PLUS SPOT VARNISH

## WARRANTY & PRODUCT REGISTRATION

- 1 YEAR LIMITED WARRANTY
- PRODUCT REGISTRATION AT [WWW.AQUATICLIFE.COM](http://WWW.AQUATICLIFE.COM) ONLY



MINI SKIMMER 115



ADJUSTABLE MOUNTING BRACKET FITS STANDARD AQUARIUM FRAMES



SUCTION CUPS PROVIDE OPTIONAL MOUNTING IN AQUARIUMS



BUILT-IN CHANNEL CONCEALS GROUNDED POWER CORD



QUICK-LOCK DESIGN MAKES IT EASY TO OPEN SKIMMER HOUSING FOR CLEANING

## FEATURES

- COMPACT SIZE MAKES THIS SKIMMER IDEAL FOR UP TO 30 GALLON REEF AND MARINE AQUARIUMS
- PLACEMENT INSIDE AQUARIUM PROVIDES QUIET OPERATION
- STREAMLINED DESIGN EFFECTIVELY ELIMINATES ORGANIC WASTE
- PROVEN NEEDLE-WHEEL IMPELLER INCREASES AIR-TO-WATER CONTACT

## CONTENTS

- (1) SKIMMER
- (1) PUMP
- (2) MOUNTING BRACKETS
- (4) SUCTION CUPS

Parts Diagram

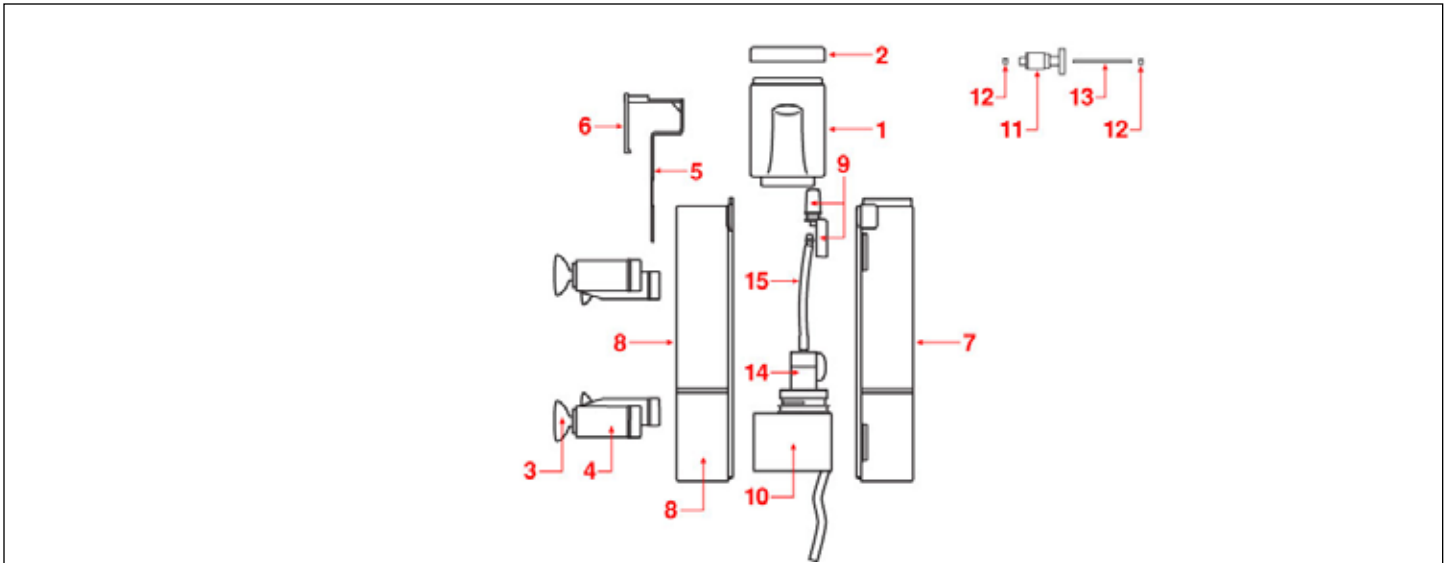


DIAGRAM DOES NOT REFLECT ACTUAL SIZE

**INTERNAL MINI SKIMMER 115**

DIAGRAM NUMBER	ITEM NUMBER	PART DESCRIPTION
1	<b>470115</b>	Collection Cup with Cone
2	<b>470116</b>	Collection Cup Lid
3	<b>470117</b>	Suction Cup (4)
4	<b>470118</b>	Mounting Clip (2)
5	<b>470119</b>	Mounting Bracket
6	<b>470120</b>	Mounting Lock
7	<b>N/A</b>	Font Housing
8	<b>N/A</b>	Rear Housing

DIAGRAM NUMBER	ITEM NUMBER	PART DESCRIPTION
9	<b>470121</b>	Flow Control Knob
10	<b>9000447</b>	Pump
11	<b>470122</b>	Impeller
12	<b>470123</b>	Impeller Shaft Cap (2)
13	<b>470124</b>	Impeller Shaft
14	<b>470125</b>	Impeller Cover
15	<b>470126</b>	Venturi Tube