

34" XS-UV LED MARINE LIGHT FIXTURE

DESCRIPTION

- LIGHT FIXTURE USING 3 WATT CREE AND SEMILED LED'S DESIGNED FOR KEEPING REEF AQUARIUMS

UPC#

- 810957013103

APPEARANCE

- BLACK ANODIZED FINISH
- ILLUMINATED OPERATION DISPLAY
- BLUE ACCENT PANELS

ELECTRICAL & OPERATING REQUIREMENTS

- RATED VOLTAGE: 115/230 VOLT AC
- RATED CYCLE: 50-60 HZ
- POWER FACTOR: 0.95
- INPUT CURRENT: 1.5 AMPS
- MAXIMUM FIXTURE WATTAGE: 181W
- POWER CORD LENGTH: 1.8 METER
- FIXTURE CORD LENGTH: 2.9 METERS
- USB CORD: 3 METERS

REFLECTORS

- INDIVIDUAL 80° AND 100° LENSES

SIZE & WEIGHT

- **PACKAGING**
 - 45 X 15.75 X 5.25 IN
 - 114.3 X 40 X 13.335 CM
 - 25.65 LBS / 11.635 KG
- **PRODUCT (LIGHT WITHOUT FRAME MOUNTS)**
 - 34.5 X 12.125 X 2.125 IN
 - 87.62 X 30.8 X 5.4 CM
 - 19.70 LBS / 8.936 KG
- **PRODUCT (LIGHT WITH FRAME MOUNTS)**
 - 38.25 X 14.75 X 6.25 IN
 - 97.155 X 37.465 X 15.875 CM
 - 20.5 LBS / 9.095 KG

PACKAGING

- **BOX**
 - REINFORCED FLEXOGRAPHY PRINTED BROWN CARDBOARD, WITH FOUR COLOR LABEL

OPTIONAL ACCESSORIES

- 60° LENSES
- UNIVERSAL FIXTURE HANGERS
- SUSPENSION HARDWARE

WARRANTY & PRODUCT REGISTRATION

- 12 MONTH LIMITED WARRANTY
- LIFETIME REPAIR GUARANTEE (INCLUDED)

34" XS-UV LED MARINE LIGHT FIXTURE



34" XS-UV LED Light Fixture



Remote Control



Aquarium Frame Mounts



Suspension Hardware (Optional)
Purchase at aquaticlife.com
under Replacement parts

FEATURES

- HIGH OUTPUT AMERICAN-MADE MIXTURE OF CREE AND SEMILED'S LED'S PRODUCE SPECTRUM OF LIGHT DESIGNED FOR GROWING CORALS
- EASILY ADJUST LIGHT TO ADAPT TO CHANGING TANK ENVIRONMENT BY PROGRAMMING UP TO THREE INDEPENDENT 24 HOUR LIGHT CYCLES
- INCLUDED REMOTE EASILY CONTROLS MULTIPLE LIGHT CYCLE PROGRAMS AND LIGHTING EFFECTS
- DOWNLOADABLE SOFTWARE IS AVAILABLE FROM WEB FOR COMPLETE LIGHT CYCLE AND COLOR COMBINATION PROGRAMMING
- FRONT PANEL INDICATOR VIVIDLY DISPLAYS CURRENT OPERATING LIGHTING PROGRAM

LED'S

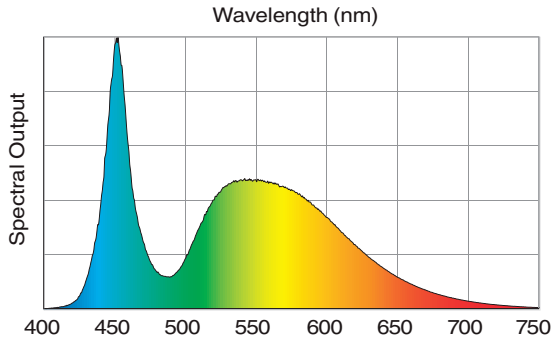
- (12) CREE XTE (WHITE)
- (12) CREE XTE (ROYAL BLUE)
- (16) CREE XPE (BLUE)
- (4) SEMILED'S 420nm (ACTINIC BLUE)
- (2) SEMILED'S 400nm (VIOLET)
- (4) SEMILED'S 620nm (RED)

CONTENTS

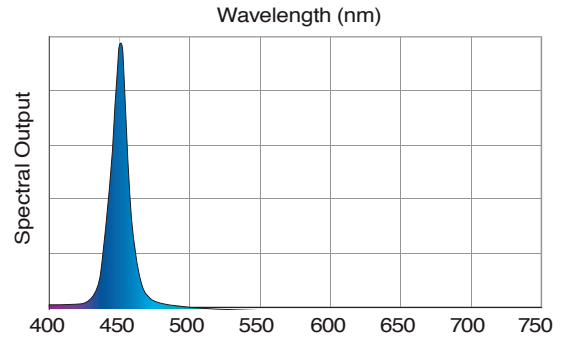
- (1) 46 IN LED FIXTURE
- (4) AQUARIUM FRAME MOUNTS
- (1) REMOTE CONTROL
- (1) cULus APPROVED POWER SUPPLY
- (1) USB CABLE

Spectral Output

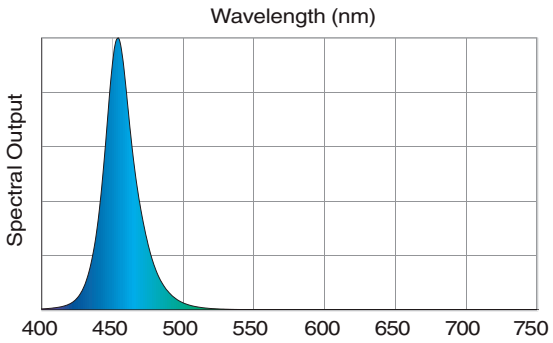
WHITE



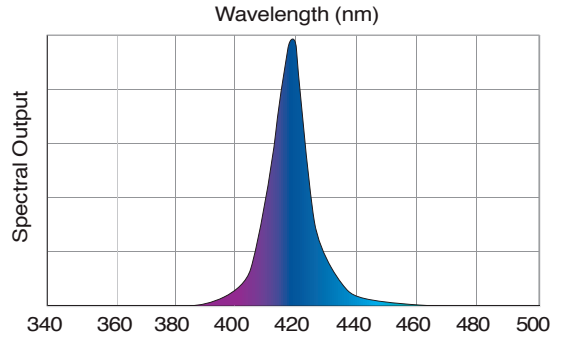
400nm



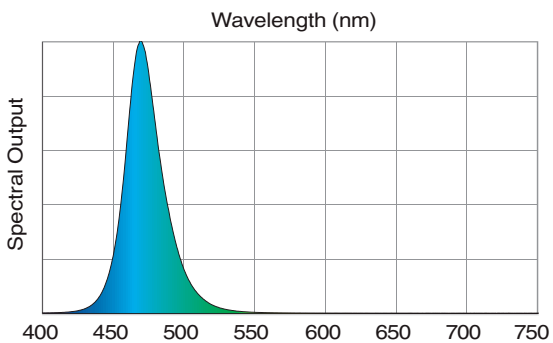
ROYAL BLUE



420nm



BLUE



RED

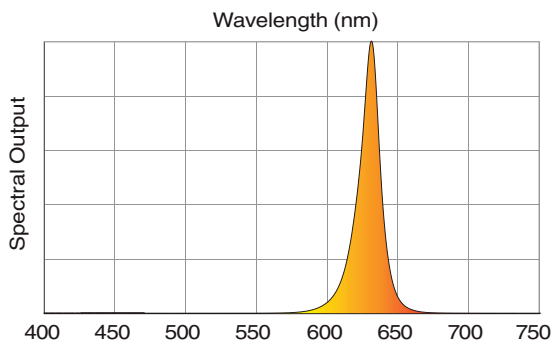
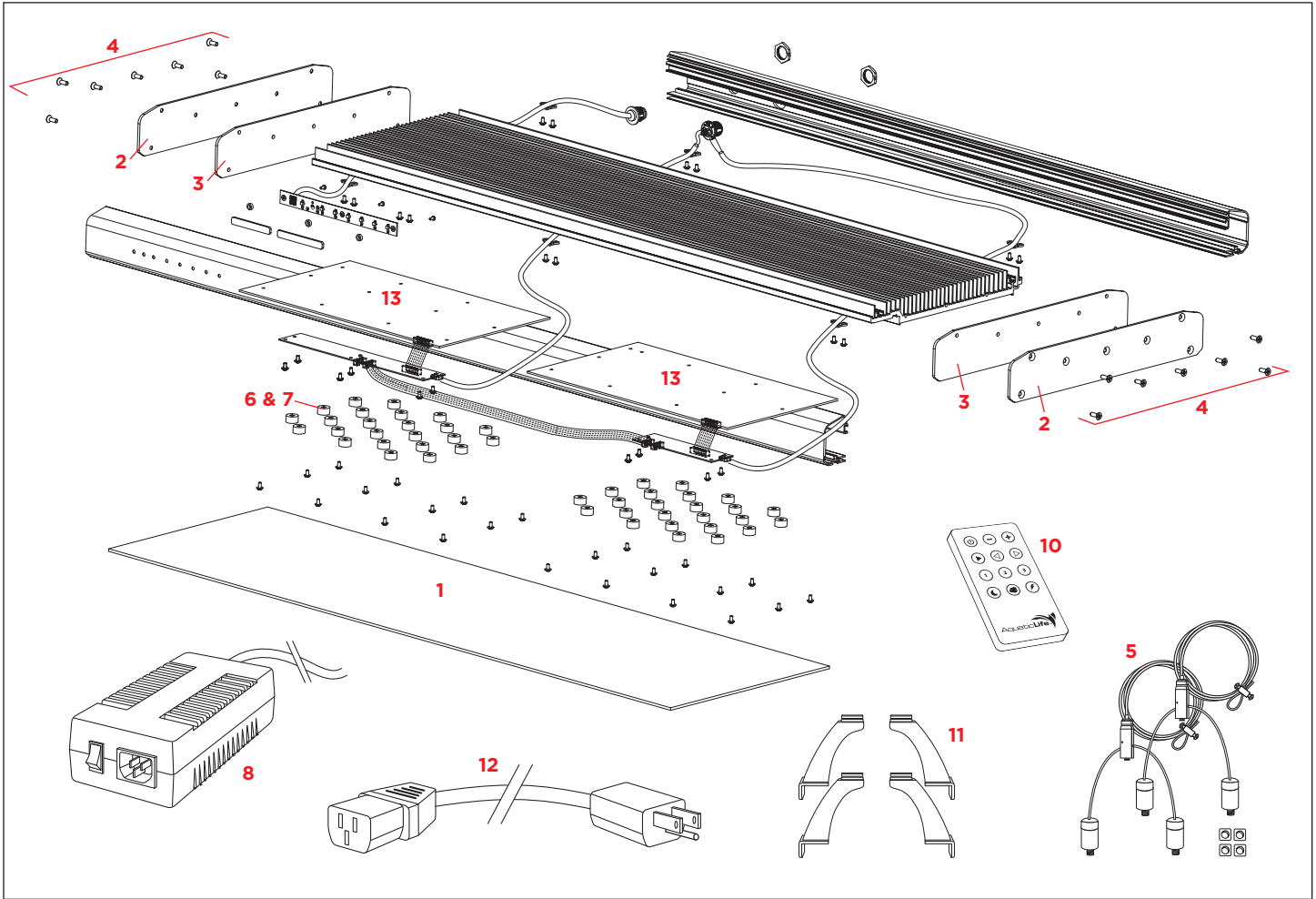


DIAGRAM DOES NOT REFLECT ACTUAL SIZE



34" XS-UV LED MARINE LIGHT FIXTURE

DIAGRAM NUMBER	ITEM NUMBER	PART DESCRIPTION
1	9000535	Lens Cover Acrylic
2	9000594	End Plate Exp LED 3W (universal)
3	9000595	End Plate Blue Accent LED 1W (universal)
4	9000596	Screws LED 3W End Plate/Accent Plate (14 PK)
5	470281	Suspension Hardware (optional)
6	9000573	Reflector LED 100 Deg (6 PK)

DIAGRAM NUMBER	ITEM NUMBER	PART DESCRIPTION
7	9000574	Reflector LED 80 Deg (6 PK)
8	470129	Power Supply (w/switch)
9	9000531	USB Cable (3 meters) (not shown)
10	9000587	Remote Control
11	470262	Aquarium Frame Mounts
12	9000589	Power Cord (1.8 meters) SVT 18 AWG
13	470312	XS-UV LED Board