

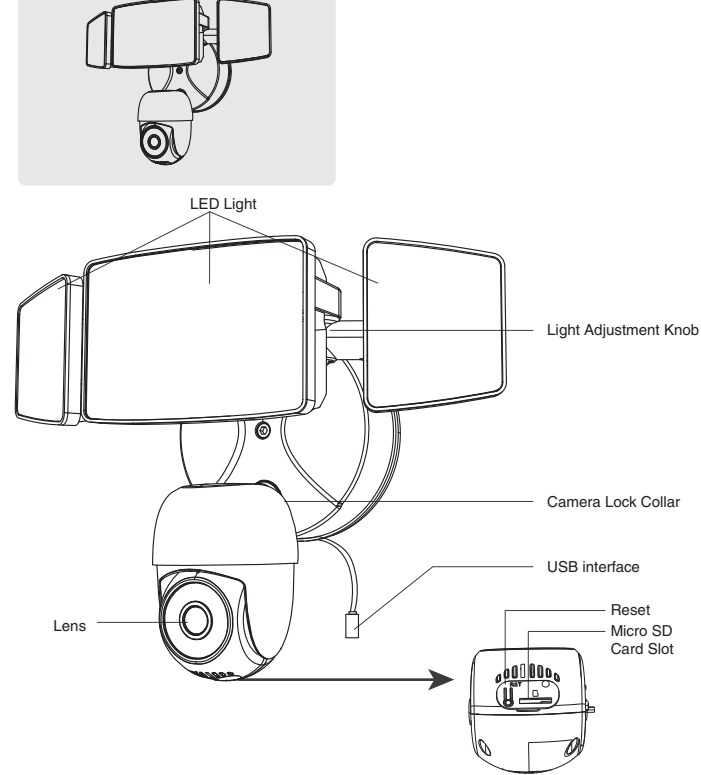
SMART WIRELESS FLOODLIGHT CAMERA

Product Manual

MODEL: BDB65SX-3

COMPONENTS AND STRUCTURE

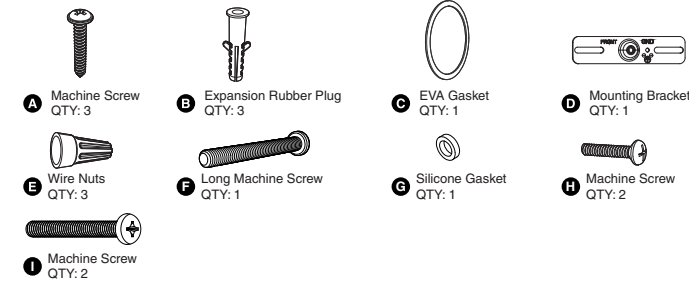
BDB65SX-3



2



PARTS LIST



SPECIFICATIONS

LED Floodlight Camera	
Model	BDB65SX-3
Input Voltage	100-240V ~ 50/60Hz
Input Current	0.6A
Rated Power	55W
Luminous Flux	5500lm
CCT	6500K
CRI	≥80
Power Factor	≥0.9
L70B50 lifetime	30000hours L70B50 @ 25°
Beam Angle	120°
fa	-20~40°C/-4°F~104°F
Luminaire Location	SUITABLE FOR WET LOCATIONS

3

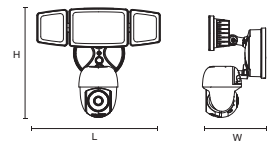


SPECIFICATIONS

Camera	
Video	4MP 2560*1440P
Field of View	96° wide & 53° Height viewing angle
Tracking	Auto Tracking & Human Detection
Camera Angle	Pan & Tilt: 340° horizontal and 120° vertical rotation range
Audio	Two-Way Talk with Audio and advanced noise cancellation.
Internet Requirements	Recommended minimum upload speed of 2 Mbps per device.
Connectivity	802.11 b/g/n/ac Wi-Fi connection @2.4GHz 902-928 Mhz Radio
Storage	Micro SD Card up to 128GB (not included)

DIMENSIONS

Model	BDB65SX-3
Dimensions (LxHxW)	274 x 242 x 147mm/ 10.79 x 9.52 x 5.79 in
Weight	0.95kg/2.09 lb



4



SAFETY INFORMATION



WARNING: Risk of electrical shock

- Disconnect power at the fuse or circuit breaker before installing.
- Verify that the supply voltage is correct. Connect fixture to a 100-240V ~ 50/60Hz power source.

Properly ground fixture.

Always follow code standards when installing wire connections. If you are outside of North America, installation and wiring must be performed by a licensed electrician.

CAUTION: Risk of fire

Do not install near combustible or flammable surfaces.

NOTICE

Do not connect this light fixture to a dimmer switch or timer. Floodlight Camera must be installed on a wall and on a UL listed junction box.

WARNING:

THIS PRODUCT MUST BE INSTALLED IN ACCORDANCE WITH THE APPLICABLE INSTALLATION CODE BY A PERSON FAMILIAR WITH THE CONSTRUCTION AND OPERATION OF THE PRODUCT AND THE HAZARDS INVOLVED.

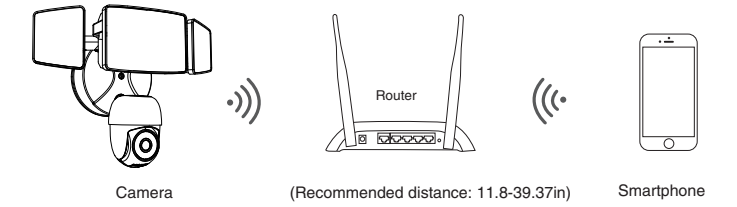
DO NOT CONNECT THIS LIGHT FIXTURE TO AN UNGROUNDED ELECTRICAL SYSTEM. ATTACH GROUND FIXTURE WIRE TO EITHER GREEN GROUND SCREW ON MOUNTING PLATE OR THE GROUND WIRE IN THE OUTLET BOX.

5



CONNECTION PREPARATION

This HD Smart Wi-Fi Camera and App is compatible with the devices using iOS 9.0 and above with Wi-Fi option, or Android 5.0 and above with Wi-Fi option. Please install the Floodlight Camera within Wi-Fi covered area to ensure the best working performance. This device does not currently support 5GHz WiFi bands. Please see that your phone is connected to 2.4GHz WiFi band of your router. Please don't use special characters, symbols to name the Wi-Fi and its password.



(Recommended distance: 11.8-39.37in)

6



PAIRING FLOODLIGHT CAMERA WITH "Onforu Home" APP

Step 1. Get the App and the Account

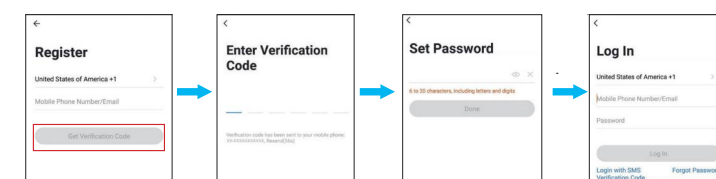


1. "Onforu Home" App Download. There are 2 options for obtaining and downloading the "Onforu Home" App on your smart device.

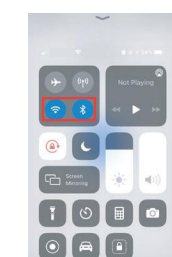
1) Scan the QR code on the above.



2) Search for "Onforu Home" in the App Store or Google Play.



2. Enter the "Onforu Home" App. Register an account and log in. If you already have an account for Onforu Home App, Please select "Log in with existing account".
Note: You will need your "Onforu Home" App username and password to pair with Amazon Alexa and/or Google Assistant.



3. Please turn on the Wi-Fi and Bluetooth on your phone before connecting LED lights to the "Onforu Home" App.

7



PAIRING FLOODLIGHT CAMERA WITH "Onforu Home" APP

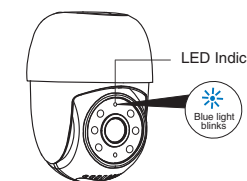
Step 2. Connect the App

1. Connect the floodlight camera to the power supply. After power on, the light will be on for 1 second (It means the light can work normally). And then the light will turn off.

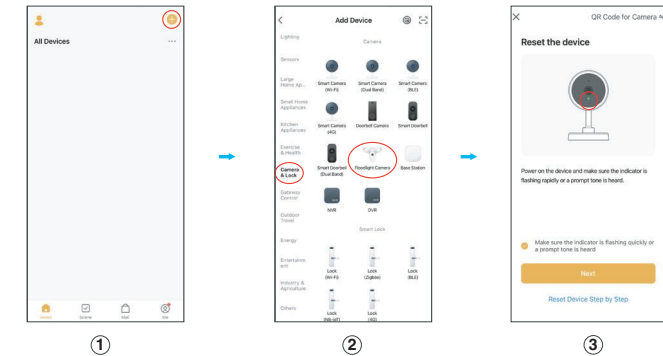
2. add the device

1) After the light is powered on, wait for about 15-20s, the camera will say "camera starts" and the blue light is always on, it means the camera starts working.
2) The camera will rotate left, right, up, and down, wait for 5S, the camera will say "Please configure network" and the blue light will flash, which means you can connect your cell phone.

[Note: If reset is required, use the reset pin to press the Reset (as shown on "COMPONENTS AND STRUCTURE" above) for several seconds until the camera starts to beep.]



Note: What if I can't connect to the camera? Try to reset the camera; The reset step is refer to page 10th. If it still can not be solve, contact our seller and provide the number posted on the camera, please.



1

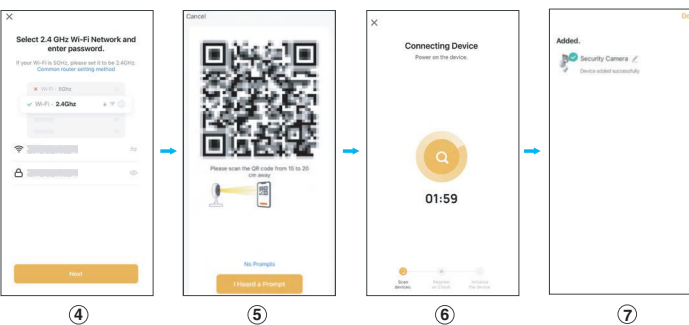
2

3

8



PAIRING FLOODLIGHT CAMERA WITH "Onforu Home" APP



4

5

6

7

- Tap "*" button on top right corner and tap "Add Device" to add device.
- Tap "Camera&Lock" and then "Floodlight Camera" to enter next page.
- While you have seen the indicator on the camera is flashing quickly, click "next step" Tap the "Next" button to pair the LED Light
- Enter Wi-Fi password to join your network.
Please Note: a. This smart LED Light can only support 2.4 GHz network and cannot work with 5.0 GHz network.
- Put the QR code that appears on the APP in front of the Camera at a distance of 15-20cm (5.9-7.87in). "I heard a Prompt": Then when you hear a "ding", click on "I heard a Prompt."
- Wait for the device to register (about 40-60s).
When the blue LED indicator stop flashing and The camera will say "Camera online", It means the connected is finished
- Tap "Done" to complete the light pairing

9

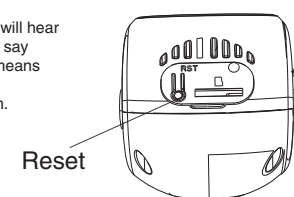


CAMERA LED INDICATOR

NO.	LED Status	Camera Status
1	Blue indicator always on	Camera Start
2	Blue indicator flashing	Network pairing
3	Blue light off	The camera connects to the network successfully.

Reset

Press and hold the reset button for about 5S-10S, you will hear "ding" sound, and then wait for 10-15s, the camera will say "Camera Start" and the blue light will be always on, it means the camera is starting to work. And continue the next step that is shown on page 8-9th.

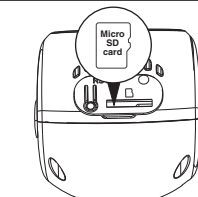


Micro SD Card

- To ensure Micro SD Card video recording works steady, we recommend to use a Class 10 or higher speed Micro SD Card.
- To make sure the device works normally, please format the Micro SD Card to FAT32 before the first time use.

- Before insert or pull out the Micro SD Card, please power off the device.
- Insert the Micro SD Card properly into the slot as below.

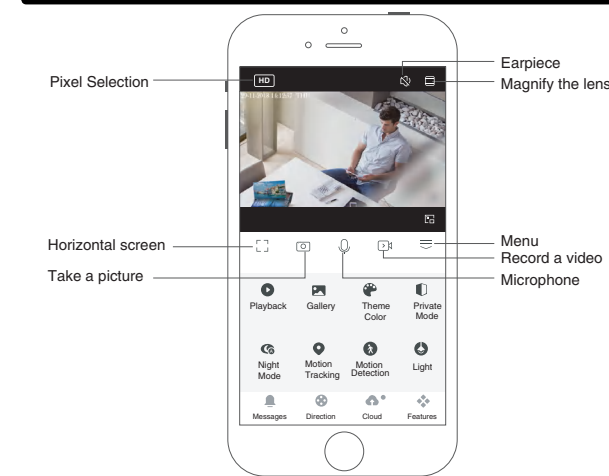
Note: Micro SD Card (not included) will perform Event Recording or Non-Stop Recording. Upon reaching its maximum storage capacity, it will automatically record over the oldest recording. This will erase the oldest recording, and replace it with the new recording. For longer access to important recordings, it is recommended to move the recordings from the Micro SD card to your computer etc. Recorded videos can be seen under the Playback icon.



10



HOW TO OPERATE THE APP



Playback	You can watch back the previous video recordings here. Note: Micro SD Card is required to watch back.
Gallery	Check manual screenshots and recorded videos
Theme Color	Change the color of the APP interface
Private Mode	Turn off the camera image

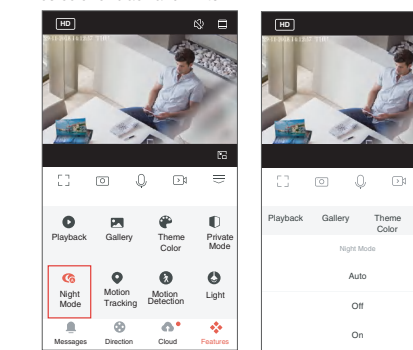
11



HOW TO OPERATE THE APP

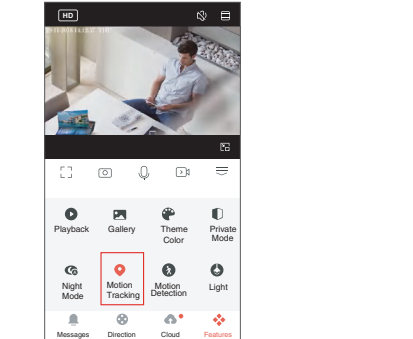
Night Mode

Select ON, the camera screen is black and white
Select OFF, the camera screen is in color
Select Auto, the camera will adjust the color of the screen according to the environment.
The camera will adjust the color of the screen according to the brightness of the environment, it may be color or black and white.



Motion Tracking

Click to start motion tracking - the camera will follow the person, if there is no continuous movement after 1 minute, the camera will return to the original position.

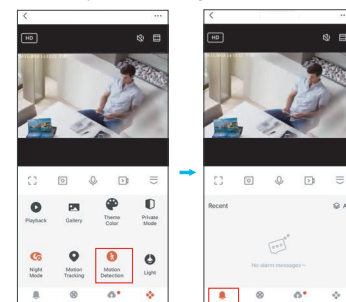


12

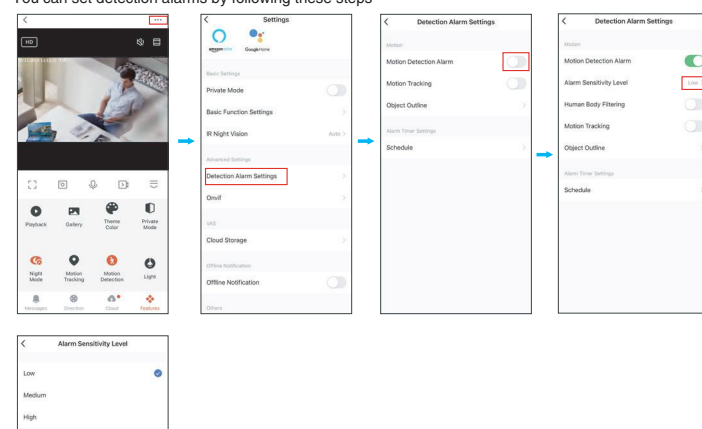


HOW TO OPERATE THE APP

Motion Detection
Start motion monitoring, when the camera detects the movement of an object, it will alert you via a message.



Detection Alarm Settings
You can set detection alarms by following these steps

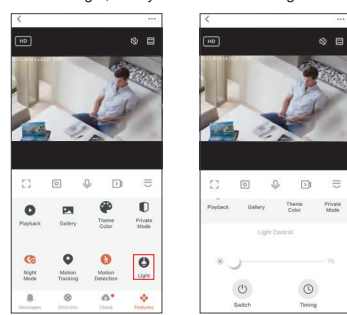


13

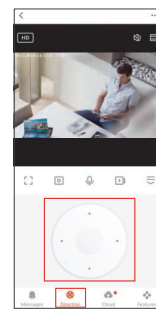


HOW TO OPERATE THE APP

Light Control
Click on Light, then you can control the light on/off, brightness, and timing.



The angle of the camera can be manually adjusted.

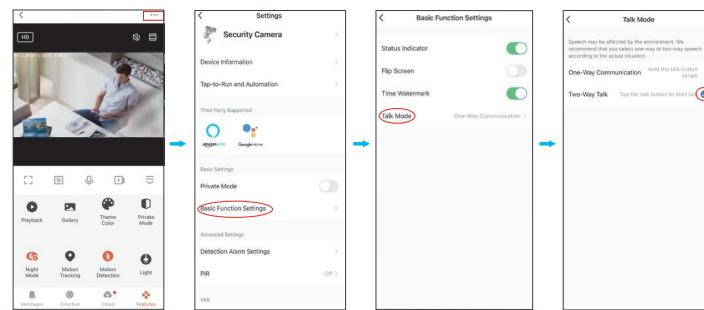


14

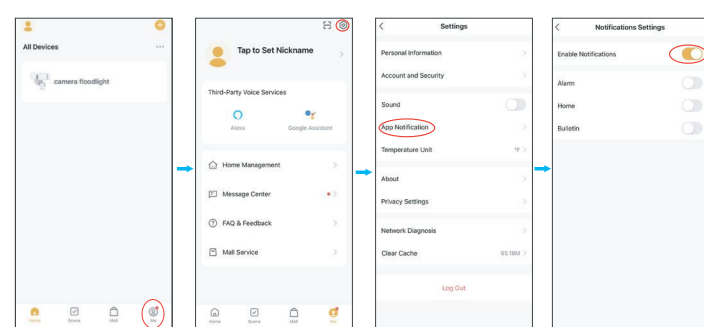


HOW TO OPERATE THE APP

One-way/two-way communication mode settings



Turning message notifications off and on.
Disable pushing of motion monitoring notifications



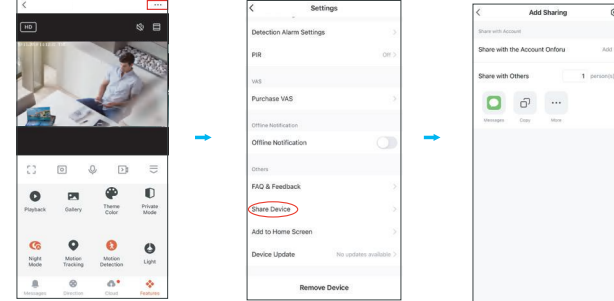
If you want to activate the motion monitoring function, but do not want to frequently receive notifications, you can disable the notification push feature.

15



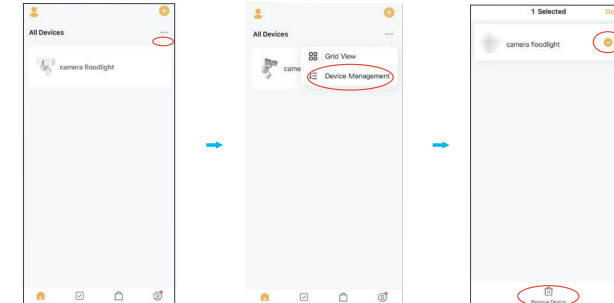
HOW TO OPERATE THE APP

Share the device



You can choose to share the device to other members of the family.
Note: Shared family members can only view monitoring and notifications, but cannot set up the monitor.

Remove the device

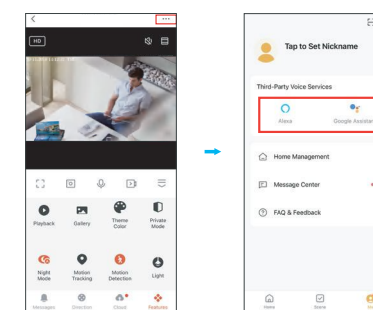


When you replace your phone, or someone else wants to connect to the device, be sure to remove the device from your old phone first.
Note: For security reasons, the device can only be connected by one person at a time. If someone else wants to see the camera information at the same time, you can refer to "Share the device".

16



HOW TO CONNECT WITH ALEXA SHOW AND GOOGLE ASSISTANT APP



Tap "... " and find the third-party voice device you want to connect to and tap it, then follow the steps to connect.

17



SHUT POWER OFF AT THE BREAKER

Turn off power to work area at main circuit breaker of fuse box
Caution: Please make sure your wall switch and power at main circuit breaker both off.



If you don't know where your breaker is or how to turn off power to your floodlight circuit, consult with a licensed electrician.

PREPARATION

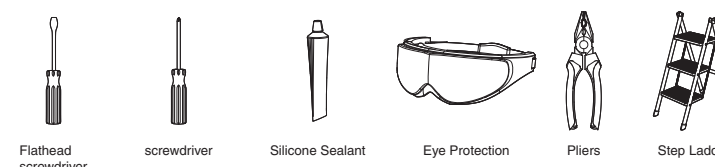
NOTE:

Before beginning assembly of product, make sure all parts are present. Compare parts with parts list. If any part is missing or damaged, do not attempt to assemble the product. Estimated Assembly Time: 30-60 minutes.

Recommended to be installed 2.5m (8.2ft) above the ground but not higher than 5m (16.4ft).

Product appearance may vary from image shown.

TOOLS REQUIRED (not included)



Flathead screwdriver

screwdriver

Silicone Sealant

Eye Protection

Pliers

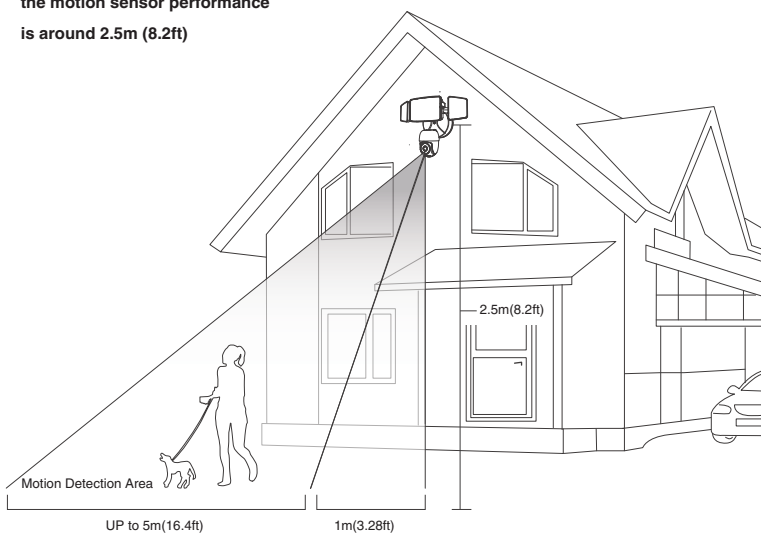
Step Ladder

18



PROPER INSTALLATION HEIGHT

The proper installation height to optimize the motion sensor performance is around 2.5m (8.2ft)

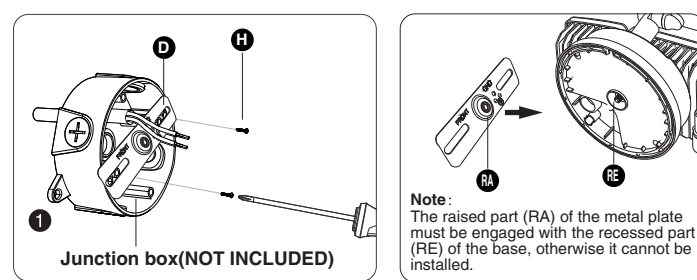


19



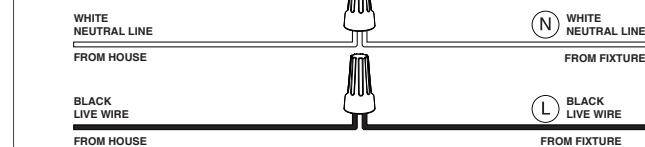
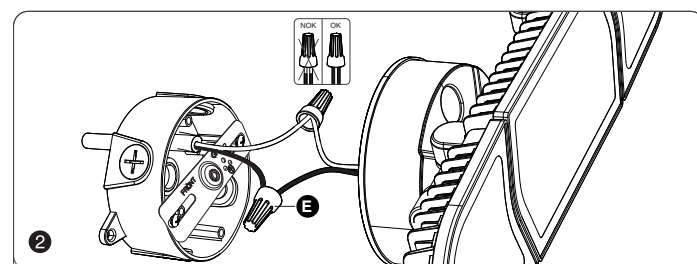
INSTALLATION STEPS

FOR WET LOCATION, MAKE SURE FILL FULL THE GAP OF EVA GASKET AND MOUNTING SURFACE WITH SEALING COMPOUND OR SILICONE GLUE.



Junction box (NOT INCLUDED)

Note:
The raised part (RA) of the metal plate must be engaged with the recessed part (RE) of the base, otherwise it cannot be installed.



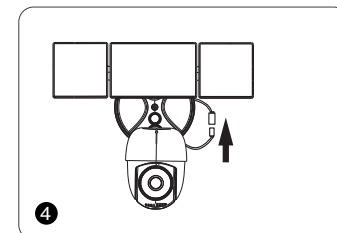
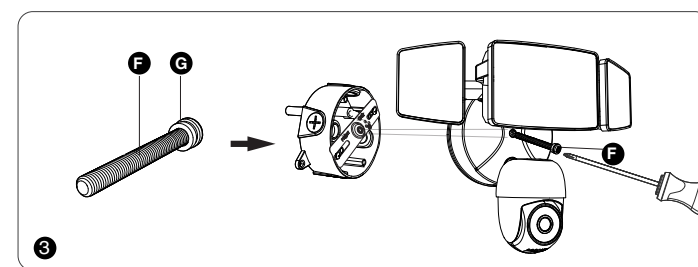
WHITE NEUTRAL LINE FROM HOUSE

WHITE NEUTRAL LINE FROM FIXTURE

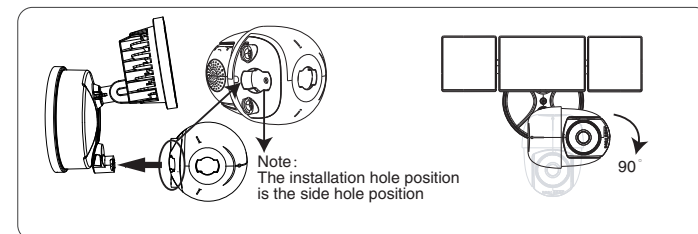
BLACK LIVE WIRE FROM HOUSE

BLACK LIVE WIRE FROM FIXTURE

20



Note:
If the camera falls off accidentally, reinstall the camera as follows.



21



RESTORE POWER AT THE BREAKER



After restoring power, the lights will turn on and your Floodlight Camera will begin speaking to you to let you know it's in setup mode.

22



FCC ID: 2A3W8BDB65SX-3

FCC Warning:

Any Changes or modifications not expressly approved by the party responsible for compliance could void the user's authority to operate the equipment.
This device complies with part 15 of the FCC Rules. Operation is subject to the following two conditions:

(1) This device may not cause harmful interference, and
(2) this device must accept any interference received, including interference that may cause undesired operation.

Note: This equipment has been tested and found to comply with the limits for a Class B digital device, pursuant to part 15 of the FCC Rules. These limits are designed to provide reasonable protection against harmful interference in a residential installation. This equipment generates uses and can radiate radio frequency energy and, if not installed and used in accordance with the instructions, may cause harmful interference to radio communications. However, there is no guarantee that interference will not occur in a particular installation. If this equipment does cause harmful interference to radio or television reception, which can be determined by turning the equipment off and on, the user is encouraged to try to correct the interference by one or more of the following measures:

- Reorient or relocate the receiving antenna.
 - Increase the separation between the equipment and receiver.
 - Connect the equipment into an outlet on a circuit different from that to which the receiver is connected.
 - Consult the dealer or an experienced radio/TV technician for help.
- This equipment complies with FCC radiation exposure limits set forth for an uncontrolled environment. This equipment should be installed and operated with minimum distance 20cm between the radiator & your body.

23



FAQ

1. What if I can't connect to the camera?
Try to reset the camera; The reset step is refer to page 16th. If it still can not be solve, contact our seller and provide the number posted on the camera, please.

2. Can't find a Micro SD Card?
Firstly we suggest using these famous brands card, like Samsung, SanDisk, Kingston etc. with at least class 10. Secondly, please format it to FAT32, which is the only format that camera can support.

3. Two way audio is not working?
Please go to "Settings" -> "Basic function settings"->"Talk Mode"- turn on "Two-way talk".

4. You cannot get the video for a long time?
Please first make sure the camera is installed as close as possible to your router. It is not recommended to install the camera in a place where there are two thick walls away from the router. Please test your network and make sure it works well.

For more questions, please send them via the "Settings" - "FAQ&Feedback" within the app.

HK Bright International Lighting Co., Limited
Unit 616, 6/F., Kam Teem Industrial Building, 135
Connaught Road West, Sai Wan Hong Kong
Manufacturer/Hersteller: MDH LIGHTING LTD
Suite 302, 292 Strovolos Avenue, 2048 Strovolos Nicosia,
Cyprus

UK Importer: MDH LIGHTING LTD
69 Alderden Avenue, Cambridge CB2 8DL,
United Kingdom

Made in China

support@onforuled.com www.onforuleds.com

