

LED LIGHT

Product Manual

MODEL: CTB24UV CTB27UV CTB48UV
 CTB72UV CTB96UV

COMPONENTS AND STRUCTURE

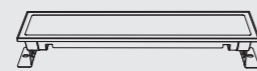
CTB24UV



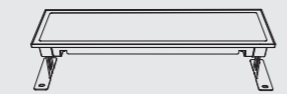
CTB27UV



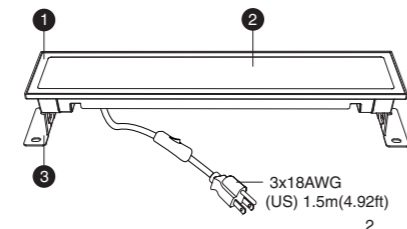
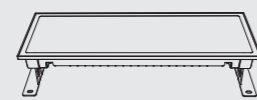
CTB48UV



CTB72UV



CTB96UV

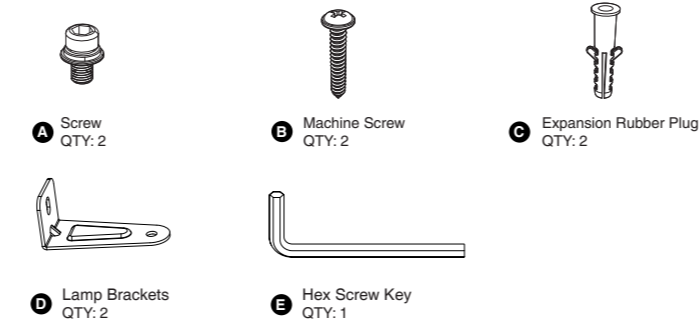


- 1. Tempered Glass Lid
- 2. LED Light Source
- 3. Lamp Bracket

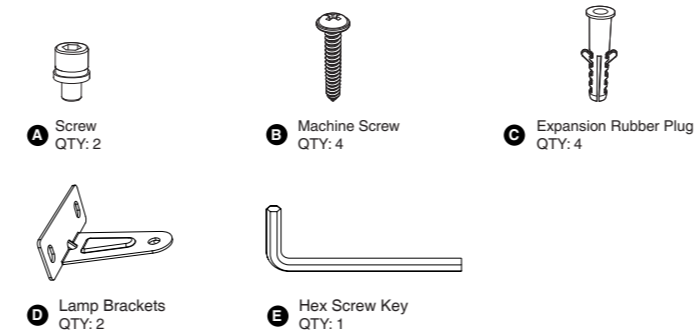
3x18AWG
(US) 1.5m(4.92ft)
2



PARTS LIST (CTB24UV CTB27UV CTB48UV)



PARTS LIST (CTB72UV CTB96UV)



3



SPECIFICATIONS

LED FLOODLIGHT			
Model	CTB24UV	CTB27UV	CTB48UV
Input Voltage	100-120V ~ 60Hz		
Input Current	0.2A	0.22A	0.42A
Rated Power	24W	27W	48W
Wavelength	385-400nm		
Power Factor	≥0.9		
Chromaticity coordinate	x=0.1763 y=0.0317		
CRI	-1.9		
Beam Angle	120°		
t _a	-20-40°C/-4°F-104°F		
Luminaire Location	SUITABLE FOR DAMP LOCATIONS		
DIMENSIONS			
Model	CTB24UV	CTB27UV	CTB48UV
Dimensions (LxHxW)	430*66*76mm/ 10.93*2.58*2.99in	394*44*50mm/ 15.51*1.73*1.97in	430*80*76mm/ 10.93*3.15*2.99in
Weight	0.53KG/1.17lb	0.465KG/1.025lb	0.9KG/1.98lb
Note: The intended purpose of this special purpose product: This light is used to create atmosphere, it is not suitable for household room illumination, the light source is not intended for use in other applications.			

4



SPECIFICATIONS

LED FLOODLIGHT		
Model	CTB72UV	CTB96UV
Input Voltage	100-120V ~ 60Hz	
Input Current	0.6A	0.82A
Rated Power	72W	96W
Wavelength	385-400nm	
Power Factor	≥0.9	
Chromaticity coordinate	x=0.1763 y=0.0317	
CRI	-1.9	
Beam Angle	120°	
t _a	-20-40°C/-4°F-104°F	
Luminaire Location	SUITABLE FOR DAMP LOCATIONS	
DIMENSIONS		
Model	CTB72UV	CTB96UV
Dimensions (LxHxW)	430*110*110mm/ 10.93*4.33*4.33in	430*140*110mm/ 10.93*5.5*4.33in
Weight	1.21kg/2.67lb	1.6kg/3.53lb
Note: The intended purpose of this special purpose product: This light is used to create atmosphere, it is not suitable for household room illumination, the light source is not intended for use in other applications.		

5

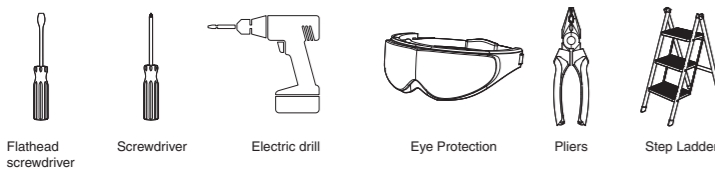


PREPARATION

Check all components for damage, do not use the product if it is damaged.

Estimated Assembly Time:10-30 minutes

TOOLS REQUIRED (not included)



WARNING:

THIS PRODUCT MUST BE INSTALLED IN ACCORDANCE WITH THE APPLICABLE INSTALLATION CODE BY A PERSON FAMILIAR WITH THE CONSTRUCTION AND OPERATION OF THE PRODUCT AND THE HAZARDS INVOLVED.
RISK OF SHOCK- BEFORE BEGINNING INSTALLATION,TURN OFF ELECTRICITY AT THE CIRCUIT BREAKER BOX OR THE MAIN FUSE BOX.

6



CAUTION:

PLEASE MAKE SURE YOUR WALL SWITCH AND POWER AT MAIN CIRCUIT BREAKER BOTH ARE OFF.

IF IN DOUBT ABOUT ELECTRICAL INSTALLATION, CONSULT A LICENSED ELECTRICIAN.

WARNING: INSTALLING THIS LIGHT IN AN UNGROUNDED ELECTRICAL SYSTEM MAY CAUSE THE METAL PARTS OF THE LIGHT TO CARRY CURRENT IF ANY WIRES OR WIRE CONNECTIONS ARE DAMAGED OR LOOSE. IN THIS CASE, ANYONE WHO TOUCHES THE LIGHT WILL RECEIVE AN ELECTRIC SHOCK, RESULTING IN INJURY OR DEATH.

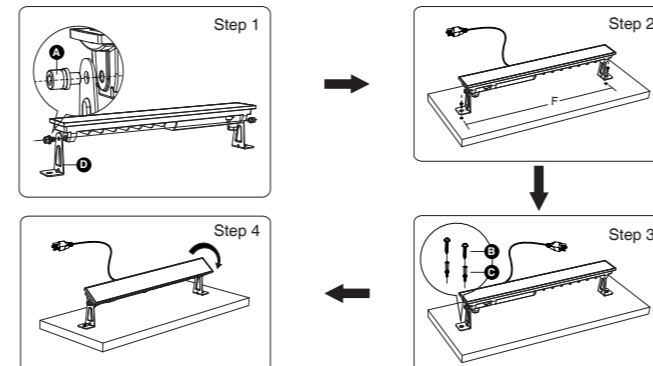
BE CAREFUL NOT TO DAMAGE OR CUT THE WIRE INSULATION (COVERING) DURING INSTALLATION. DO NOT LET THE WIRES TOUCH ANY SHARP EDGES.

7



INSTALLATION STEPS

Product appearance may vary from image shown.



STEP 1: Fix the bracket on the lamp with the combination screw. (as shown in the image)

STEP 2: According to the spacing (see the "F" part of the picture) of two holes on the lamp brackets, drill two mounting holes. (as shown in the image)

STEP 3: Put the brackets onto the prepared mounting holes and then screw them on.

STEP 4: Adjust the beam direction as you like, and then plug into the main socket.

8



FCC Warning:

Any Changes or modifications not expressly approved by the party responsible for compliance could void the user's authority to operate the equipment.
This device complies with part 15 of the FCC Rules. Operation is subject to the following two conditions:

- (1) This device may not cause harmful interference, and
- (2) this device must accept any interference received, including interference that may cause undesired operation.

Note: This equipment has been tested and found to comply with the limits for a Class B digital device, pursuant to part 15 of the FCC Rules. These limits are designed to provide reasonable protection against harmful interference in a residential installation. This equipment generates uses and can radiate radio frequency energy and, if not installed and used in accordance with the instructions, may cause harmful interference to radio communications. However, there is no guarantee that interference will not occur in a particular installation. If this equipment does cause harmful interference to radio or television reception, which can be determined by turning the equipment off and on, the user is encouraged to try to correct the interference by one or more of the following measures:

- Reorient or relocate the receiving antenna.
- Increase the separation between the equipment and receiver.
- Connect the equipment into an outlet on a circuit different from that to which the receiver is connected.
- Consult the dealer or an experienced radio/TV technician for help.

This equipment complies with FCC radiation exposure limits set forth for an uncontrolled environment. This equipment should be installed and operated with minimum distance 20cm between the radiator & your body.

HK Bright International Lighting Co., Limited
Unit 616, 6/F., Kam Teem Industrial Building, 135
Connaught Road West, Sai Wan Hong Kong
Manufacturer/Hersteller: MDH LIGHTING LTD
Suite 302, 292 Strovolos Avenue, 2048 Strovolos Nicosia,
Cyprus

UK Importer: MDH LIGHTING LTD
69 Aberdeen Avenue, Cambridge CB2 8DL,
United Kingdom

Made in China

✉ support@onforuled.com 🌐 www.onforuleds.com

