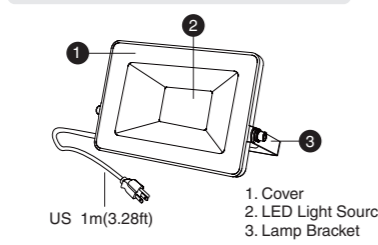
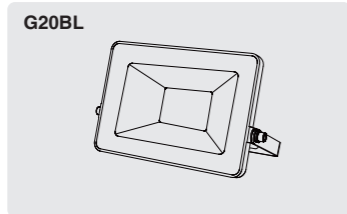
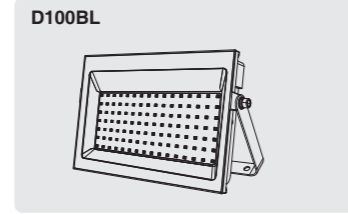
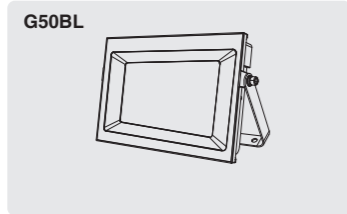


# LED FLOOD LIGHT

Product Manual

MODEL:  G50BL  D100BL  G20BL

## COMPONENTS AND STRUCTURE



1. Cover  
2. LED Light Source  
3. Lamp Bracket

2



## SPECIFICATIONS

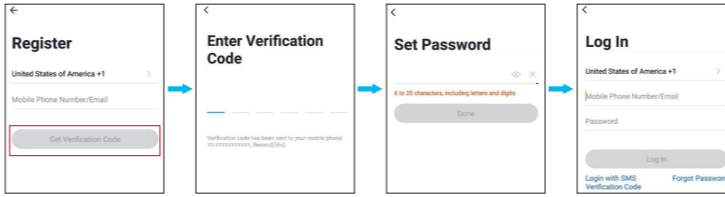
| LED FLOOD LIGHT    |                                 |                                   |                                   |
|--------------------|---------------------------------|-----------------------------------|-----------------------------------|
| Model              | G50BL                           | D100BL                            | G20BL                             |
| Input Voltage      | 100-120V - 60Hz                 |                                   |                                   |
| Input Current      | 0.68A                           | 1.17A                             | 0.25A                             |
| Rated Power        | 50W                             | 100W                              | 20W                               |
| Luminous Flux      | 4000lm                          | 7200lm                            | 1500lm                            |
| CCT                | 2700K                           |                                   |                                   |
| CRI                | ≥80                             |                                   |                                   |
| Color              | RGB                             |                                   |                                   |
| Power Factor       | ≥0.5                            |                                   |                                   |
| Beam Angle         | 120°                            |                                   |                                   |
| fa                 | -20-40°C/-4°F-104°F             |                                   |                                   |
| Luminaire Location | SUITABLE FOR WET LOCATIONS      |                                   |                                   |
| DIMENSIONS         |                                 |                                   |                                   |
| Model              | G50BL                           | D100BL                            | G20BL                             |
| Dimensions (LxWxH) | 208x127x37 mm/<br>8.19x5x1.46in | 249x39x149 mm/<br>9.8x1.54x5.87in | 145x30x98 mm/<br>5.71x1.18x3.86in |
| Weight             | 0.58 kg / 1.28 lb               | 0.92 kg / 2.03 lb                 | 0.32 kg / 0.7 lb                  |

3

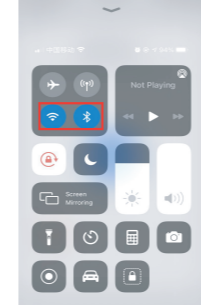


## PAIRING LED LIGHT WITH "Onforu" APP

**Step 1:** "Onforu Home" App Download.  
There are 2 options for obtaining and downloading the "Onforu Home" App on your smart device.  
1. Scan the QR code on the right.  
2. Search for "Onforu Home" in the App Store or Google Play.



**Step 2:** Enter the "Onforu Home" App. Register an account and log in. If you already have an account for Onforu Home App, Please select "Log in with existing account".  
**Note:** You will need your "Onforu Home" App username and password to pair with Amazon Alexa and/or Google Assistant.



**Step 3:** Please turn on the Wi-Fi and Bluetooth before connecting LED lights to the "Onforu Home" App.

4

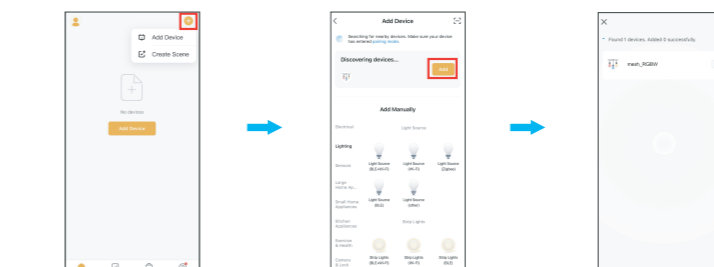


### Step 4: How to pair the LED Light

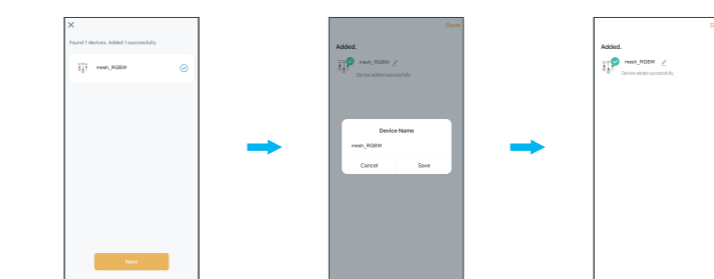
**Note:** Please understand our access request, our application needs to access your relevant information, and the purpose is only to complete the pairing with the luminaire.  
Set the light to the pending pairing state.

1. Power on the LED Light.  
2. Turn the light on and off 3 times until it starts flashing, indicating that the light is ready for pairing.

#### Method 1



1. Tap "+" button on top right corner and tap "Add Device" to add device.  
2. The app will automatically search for the device. After discovering the device, tap "Add".  
3. Wait for the device to register (about 30-60s).



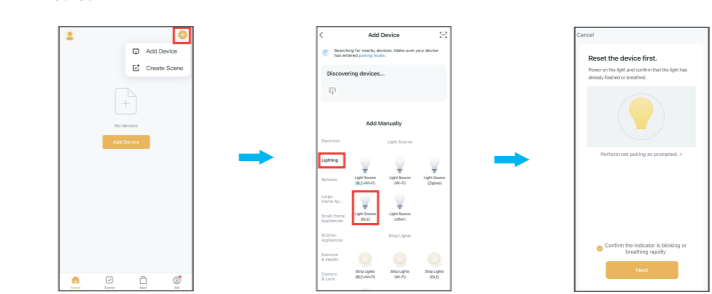
4. Tap "Next" to complete the light pairing.  
5. You can tap "Z" to change the device name.  
6. Tap "Done" to enter the control panel.

5

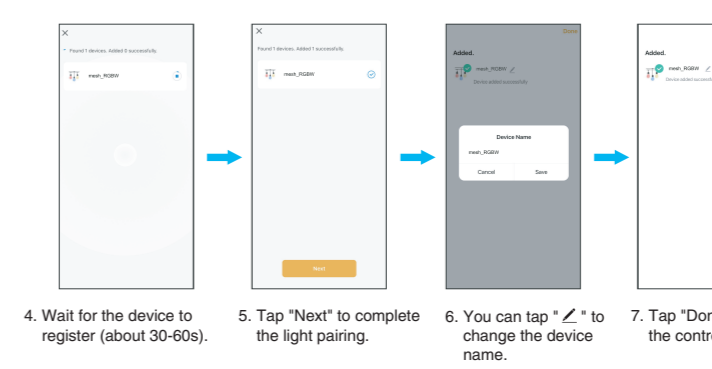


### Step 4: How to pair the LED Light

#### Method 2



1. Tap "+" button on top right corner and tap "Add Device" to add device.  
2. Tap "Lighting" and then "PIR Light(BLE)" to enter next page.  
3. Tap the "Next" button to pair the LED Light.



4. Wait for the device to register (about 30-60s).  
5. Tap "Next" to complete the light pairing.  
6. You can tap "Z" to change the device name.  
7. Tap "Done" to enter the control panel.

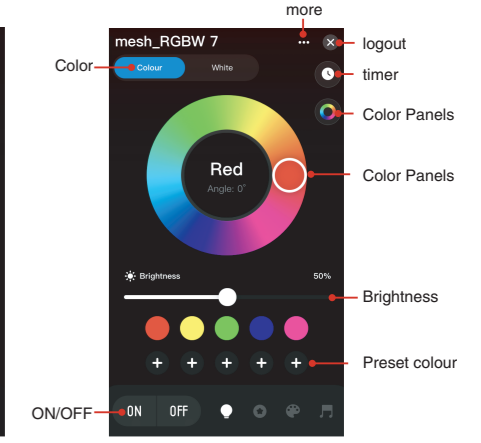
6



## APP OPERATING INSTRUCTIONS



**Note:** When first connecting to the app, a prompt will pop up which can be exited by double-clicking on the blank area.

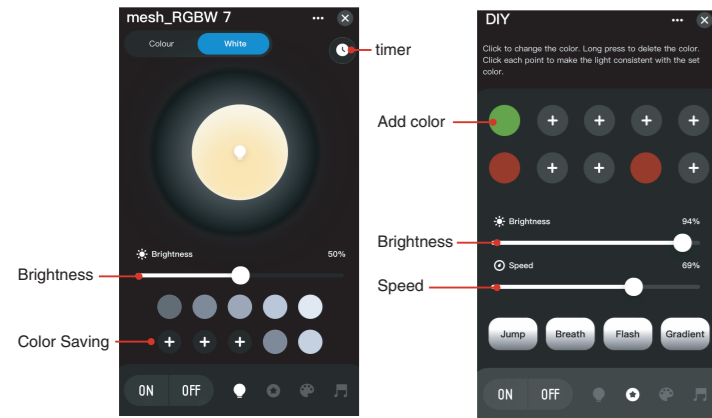


**RGB color interface**  
1. Choose the color you want  
2. Adjust the color brightness  
3. Presets to save frequently used colors  
4. Set the timer

7



## APP OPERATING INSTRUCTIONS



### White-light mode interface

1. Adjust the color brightness  
2. Presets to save common brightness modes  
3. Set the timer

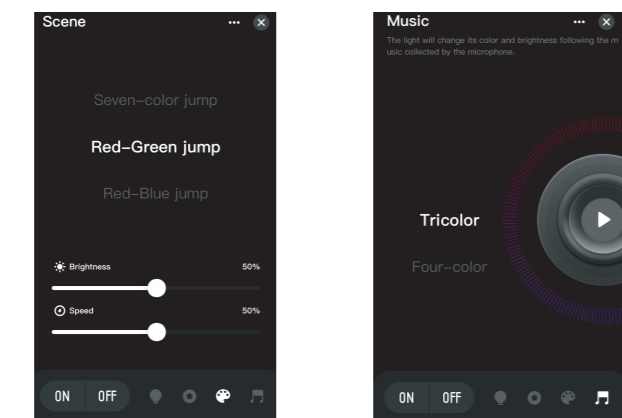
### DIY mode interface

1. Set the desired color  
2. Select the rhythm mode  
3. Adjust the brightness and speed

8



## APP OPERATING INSTRUCTIONS



### Scene mode interface

1. Set color's jump  
2. Adjust the brightness and speed

### Music mode interface

The light will change its color and brightness following the music collected by the microphone.

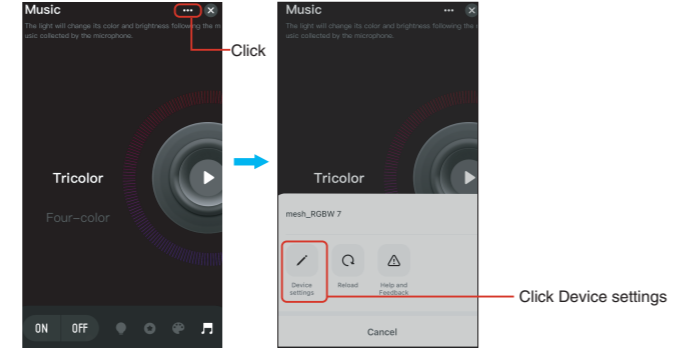
9



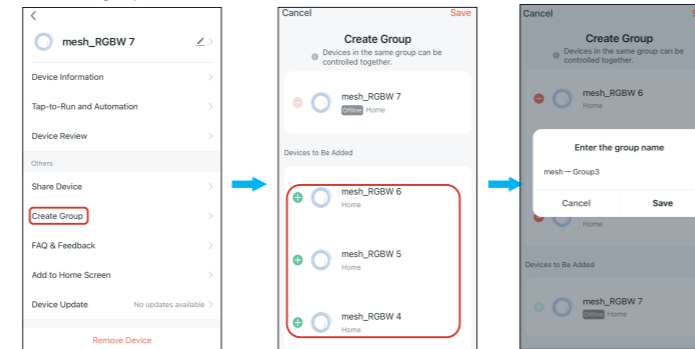
## HOW TO CONTROL LIGHTS IN GROUPS

**Note:** If the light is offline, it cannot be grouped.

1. Click More in any of the mode screens of any of the lights.



### 2. Create a group



2.1 Add Devices

2.2 Save group Customizable name

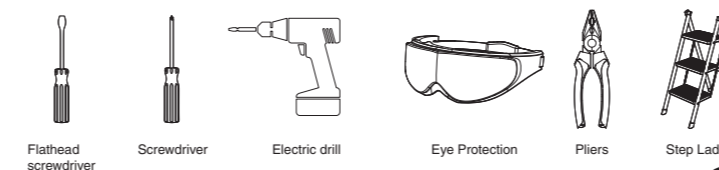
10



## PREPARATION

Check all components for damage, do not use the product if it is damaged.  
Estimated Assembly Time:10-30 minutes

### TOOLS REQUIRED (not included)



11



## PREPARATION

**CAUTION:**  
PLEASE MAKE SURE YOUR WALL SWITCH AND POWER AT MAIN CIRCUIT BREAKER BOTH ARE OFF.  
IF IN DOUBT ABOUT ELECTRICAL INSTALLATION, CONSULT A LICENSED ELECTRICIAN.

**WARNING:** INSTALLING THIS LIGHT IN AN UNGROUNDED ELECTRICAL SYSTEM MAY CAUSE THE METAL PARTS OF THE LIGHT TO CARRY CURRENT IF ANY WIRES OR WIRE CONNECTIONS ARE DAMAGED OR LOOSE. IN THIS CASE, ANYONE WHO TOUCHES THE LIGHT WILL RECEIVE AN ELECTRIC SHOCK, RESULTING IN INJURY OR DEATH.

**BE CAREFUL NOT TO DAMAGE OR CUT THE WIRE INSULATION (COVERING) DURING INSTALLATION. DO NOT LET THE WIRES TOUCH ANY SHARP EDGES.**

### WARNING:

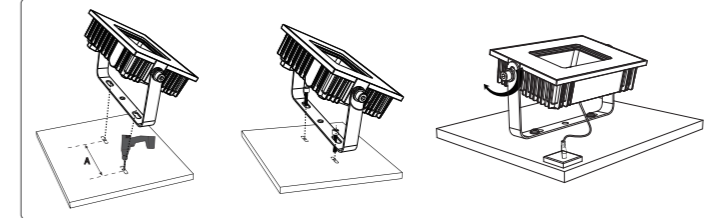
**THIS PRODUCT MUST BE INSTALLED IN ACCORDANCE WITH THE APPLICABLE INSTALLATION CODE BY A PERSON FAMILIAR WITH THE CONSTRUCTION AND OPERATION OF THE PRODUCT AND THE HAZARDS INVOLVED.**

**RISK OF SHOCK- BEFORE BEGINNING INSTALLATION,TURN OFF ELECTRICITY AT THE CIRCUIT BREAKER BOX OR THE MAIN FUSE BOX.**

12



## INSTALLATION STEPS



**Step 1:** According to the spacing (see the "A" part of the picture) of two screw bits on the LED Light bracket, drill two mounting holes.

**Step 2:** Put the bracket onto the prepared mounting holes and then screw it on.

**Step 3:** Adjust the beam direction as you like, Wiring.

**Step 4:** Adjust the beam direction as you like, and then plug into the main socket.

13



## FCC ID: 2A3W8D100BLM

### FCC Warning:

Any Changes or modifications not expressly approved by the party responsible for compliance could void the user's authority to operate the equipment.  
This device complies with part 15 of the FCC Rules. Operation is subject to the following two conditions:  
(1) This device may not cause harmful interference, and  
(2) this device must accept any interference received, including interference that may cause undesired operation.

**Note:** This equipment has been tested and found to comply with the limits for a Class B digital device, pursuant to part 15 of the FCC Rules. These limits are designed to provide reasonable protection against harmful interference in a residential installation. This equipment generates uses and can radiate radio frequency energy and, if not installed and used in accordance with the instructions, may cause harmful interference to radio communications. However, there is no guarantee that interference will not occur in a particular installation. If this equipment does cause harmful interference to radio or television reception, which can be determined by turning the equipment off and on, the user is encouraged to try to correct the interference by one or more of the following measures:

- Reorient or relocate the receiving antenna.
- Increase the separation between the equipment and receiver.
- Connect the equipment into an outlet on a circuit different from that to which the receiver is connected.
- Consult the dealer or an experienced radio/TV technician for help.

This equipment complies with FCC radiation exposure limits set forth for an uncontrolled environment. This equipment should be installed and operated with minimum distance 20cm between the radiator & your body.

HK Bright International Lighting Co., Limited  
Unit 616, 6/F., Kam Teem Industrial Building, 135  
Connaught Road West, Sai Wan Hong Kong  
Manufacturer/Hersteller: MDH LIGHTING LTD  
Suite 302, 292 Strovolos Avenue, 2048 Strovolos Nicosia,  
Cyprus  
UK Importer: MDH LIGHTING LTD  
69 Aberdeen Avenue, Cambridge CB2 8DL,  
United Kingdom  
Made in China

support@onforuled.com www.onforuleds.com

CE UK CA

