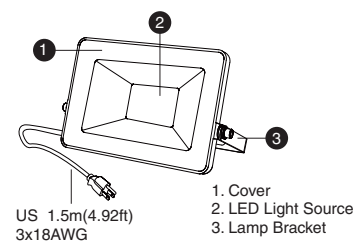
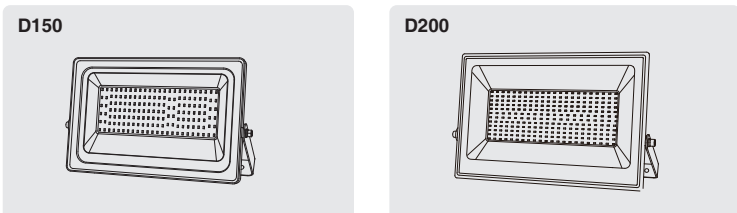
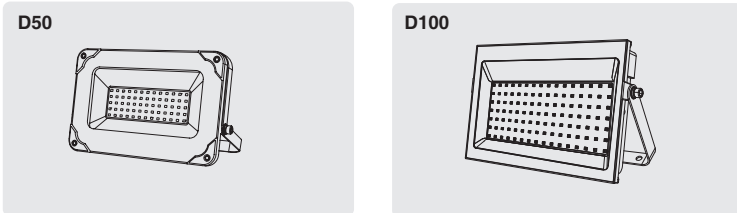


# LED FLOOD LIGHT

Product Manual

MODEL:  D50  D100  
 D150  D200

## COMPONENTS AND STRUCTURE



2



## SPECIFICATIONS

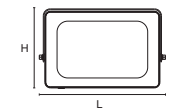
LED FLOOD LIGHT				
Model	D50	D100	D150	D200
Input Voltage	100-120V ~ 60Hz			
Input Current	0.42A	0.83A	1.22A	1.65A
Rated Power	50W	100W	150W	200W
Luminous Flux	4500lm	9000lm	13000lm	18000lm
CCT	6500K			
CRI	≥80			
Power Factor	≥0.9			
L70B50 lifetime	30000hours L70B50 @ 25°			
Beam Angle	120°			
ta	-20-40°C/-4°F-104°F			
Luminaire Location	SUITABLE FOR WET LOCATIONS			

3



## SPECIFICATIONS

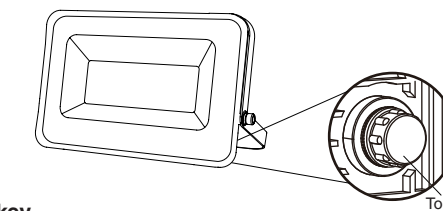
DIMENSIONS		
Model	D50	D100
Dimensions (LxHxW)	210x25x140 mm/ 8.26x0.98x5.51in	289x39x177 mm/ 11.38x1.54x6.97in
Weight	0.9 kg/1.98 lb	1.2 kg / 2.65 lb
Model	D150	D200
Dimensions (LxHxW)	334x44x197 mm/ 13.15x1.73x7.76in	376x45x251 mm/ 14.8x1.77x9.88 in
Weight	1.67 kg / 3.68 lb	2.35 kg / 5.18 lb



4



## OPERATION INSTRUCTIONS

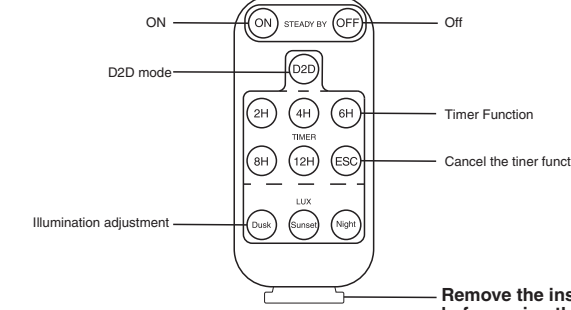


### 1. Touch key

Before installing the light, Try to unscrew the transparent cover on the light sensor. You can touch the light sensor by hand to change the light mode.

**1. Switch Controlled mode:** The light keeps working all day. There is a weak red light staying on in the light sensor.

**2. Dusk to Dawn mode:** The light will automatically turn on at night and stay off during the daytime. The light was defaulted on SUNSET mode (which means the light will be on at 20-40LUX )  
Note: When switching to dusk to dawn mode, the light will work after a one-minute delay.



### 2. Remote control function

**NOTE:** The light is with a memory function. If the light is NOT turned on by the remote controller (such as turned on the light by the switch at home), it will stay at your last setting mode (such as DUSK to DAWN mode).  
If the light is turned on by pressing 'ON' button on the remote control. The light will be SWITCH CONTROLLED mode, which means the light will stay on all day.

5



## OPERATION INSTRUCTIONS

**ON button:** Light is turned on, and light will stay on all day. Light will not enter DUSK to DAWN mode.

**Off button:** Light is turned off

### D2D mode

1. Press 'D2D' button, the light will flicker one time, then enter the DUSK to DAWN mode, the default mode is the SUNSET mode, without timing function.

### 2. Timer Function

When pressing the 2H button, the light will flicker one time, and the light will automatically turn off after 2 hours;

When pressing the 4H button, the light will flicker one time, and the light will automatically turn off after 4 hours;

When pressing the 6H button, the light will flicker one time, and the light will automatically turn off after 6 hours;

When pressing the 8H button, the light will flicker one time, and the light will automatically turn off after 8 hours;

When pressing the 12H button, the light will flicker one time, and the light will automatically turn off after 12 hours;

The timer function automatically work every day after pressing 2H/4H/6H/8H/12H button. It means that the light will turn off after it staying on 2/4/6/8/12 hours every day. no need to repeatedly set the timing function unless you want to change the timer.

**Note:** Under SWITCH CONTROLLED mode, there is no timing function.

### 3. Cancel the timer function:

Press the 'ESC' button, and the light will flicker three times, indicating the cancellation of the timer function.

### 4. Illumination adjustment:

Press the Dusk button, and the light will flicker one time: it will automatically light up at dusk (40-60LUX) every day;

Press the Sunset button, and the light will flicker one time: it will automatically light up in the sunset (20-40LUX) every day;

Press the Night button, the light will flicker one time: it will automatically light up in the night (3-10LUX) every day.;

Note: Under Dusk to Dawn mode, when the brightness of the external environment reaches more than 100lux, the light will be off. (the light will be turned off after a one-minute delay)

6

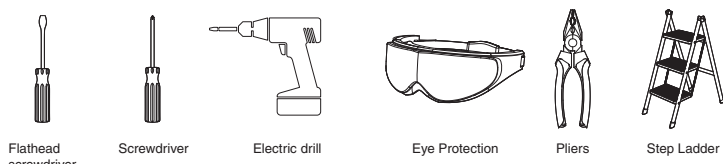


## PREPARATION

**Check all components for damage, do not use the product if it is damaged.**

**Estimated Assembly Time:10-30 minutes**

### TOOLS REQUIRED (not included)



### WARNING:

**THIS PRODUCT MUST BE INSTALLED IN ACCORDANCE WITH THE APPLICABLE INSTALLATION CODE BY A PERSON FAMILIAR WITH THE CONSTRUCTION AND OPERATION OF THE PRODUCT AND THE HAZARDS INVOLVED. RISK OF SHOCK- BEFORE BEGINNING INSTALLATION,TURN OFF ELECTRICITY AT THE CIRCUIT BREAKER BOX OR THE MAIN FUSE BOX.**

7



## PREPARATION

### CAUTION:

**PLEASE MAKE SURE YOUR WALL SWITCH AND POWER AT MAIN CIRCUIT BREAKER BOTH ARE OFF.**

**IF IN DOUBT ABOUT ELECTRICAL INSTALLATION, CONSULT A LICENSED ELECTRICIAN.**

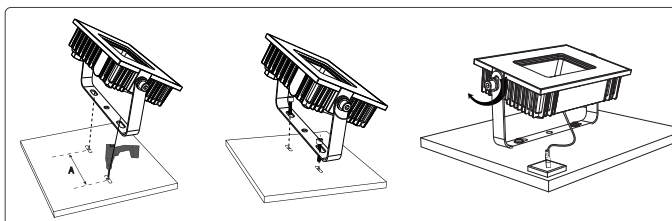
**WARNING: INSTALLING THIS LIGHT IN AN UNGROUNDED ELECTRICAL SYSTEM MAY CAUSE THE METAL PARTS OF THE LIGHT TO CARRY CURRENT IF ANY WIRES OR WIRE CONNECTIONS ARE DAMAGED OR LOOSE. IN THIS CASE, ANYONE WHO TOUCHES THE LIGHT WILL RECEIVE AN ELECTRIC SHOCK, RESULTING IN INJURY OR DEATH.**

**BE CAREFUL NOT TO DAMAGE OR CUT THE WIRE INSULATION (COVERING) DURING INSTALLATION. DO NOT LET THE WIRES TOUCH ANY SHARP EDGES.**

8



## INSTALLATION STEPS



**Step 1:** According to the spacing (see the "A" part of the picture) of two screw bits on the LED Light bracket, drill two mounting holes.

**Step 2:** Put the bracket onto the prepared mounting holes and then screw it on.

**Step 3:** Adjust the beam direction as you like, Wiring.

**Step 4:** Adjust the beam direction as you like, and then plug into the main socket.

9



### FCC Warning:

Any Changes or modifications not expressly approved by the party responsible for compliance could void the user's authority to operate the equipment.

This device complies with part 15 of the FCC Rules. Operation is subject to the following two conditions:

- (1) This device may not cause harmful interference, and
- (2) this device must accept any interference received, including interference that may cause undesired operation.

Note: This equipment has been tested and found to comply with the limits for a Class B digital device, pursuant to part 15 of the FCC Rules. These limits are designed to provide reasonable protection against harmful interference in a residential installation. This equipment generates uses and can radiate radio frequency energy and, if not installed and used in accordance with the instructions, may cause harmful interference to radio communications. However, there is no guarantee that interference will not occur in a particular installation. If this equipment does cause harmful interference to radio or television reception, which can be determined by turning the equipment off and on, the user is encouraged to try to correct the interference by one or more of the following measures:

- Reorient or relocate the receiving antenna.
- Increase the separation between the equipment and receiver.
- Connect the equipment into an outlet on a circuit different from that to which the receiver is connected.
- Consult the dealer or an experienced radio/TV technician for help.

This equipment complies with FCC radiation exposure limits set forth for an uncontrolled environment. This equipment should be installed and operated with minimum distance 20cm between the radiator & your body.

HK Bright International Lighting Co., Limited  
Unit 616, 6/F., Kam Teem Industrial Building, 135  
Connaught Road West, Sai Wan Hong Kong  
Manufacturer/Hersteller: MDH LIGHTING LTD  
Suite 302, 292 Strovolos Avenue, 2048 Strovolos Nicosia,  
Cyprus

UK Importer: MDH LIGHTING LTD  
69 Aberdeen Avenue, Cambridge CB2 8DL,  
United Kingdom

Made in China

✉ support@onforuled.com 🌐 www.onforuleds.com

