

soga®

TOOL CART

C A T A L O G

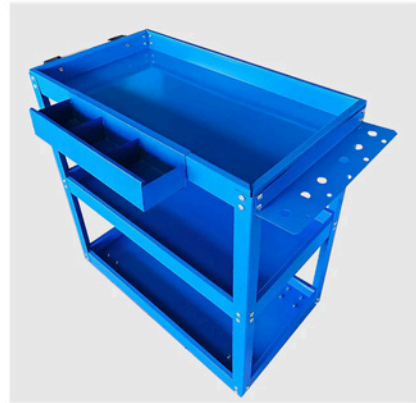




**2 Tier Tool
Storage Cart Red**

Product Code: TC00

- SKU: ToolCart605
- Material: Cold-Rolled Steel Plate
- Capacity: 25kg Per Tier
- Product size: 66x36x73cm



**3 Tier Tool
Storage Cart Blue**

Product Code: TC01

- SKU: ToolCart601
- Material: Cold-Rolled Steel Plate
- Capacity: 33kg Per Tier
- Product size: 66x36x73cm



**3 Tier Tool
Storage Cart Red**

Product Code: TC02

- SKU: ToolCart604
- Material: Cold-Rolled Steel Plate
- Capacity: 50kg Per Tier
- Product size: 66x36x73cm



**3 Tier Tool Storage
Car with Hooks Blue**

Product Code: TC03

- SKU: ToolCart608
- Material: Cold-Rolled Steel Plate
- Capacity: 40kg Per Tier
- Product size: 66x36x73cm



**3 Tier Tool Storage Cart
with Drawer and Hooks Red**

Product Code: TC04

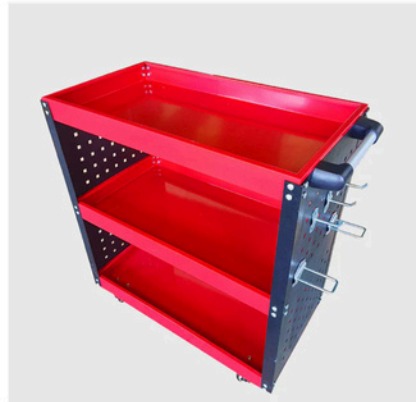
- SKU: ToolCart606
- Material: Cold-Rolled Steel Plate
- Capacity: 40kg Per Tier
- Product size: 66x36x73cm



**3 Tier Tool Storage Cart
with Porous Side Panels**

Product Code: TC05

- SKU: ToolCart607
- Material: Cold-Rolled Steel Plate
- Capacity: 40kg Per Tier
- Product size: 66x36x108cm





**3 Tier Tool Storage
Cart with Hooks Red**

Product Code: TC02

- SKU: ToolCart609
- Material: Cold-Rolled Steel Plate
- Capacity: 40kg Per Tier
- Product size: 66x36x73cm

Contact Us

 7 Chambers
Road Altona North 3025

 support@sogainternational.com

 www.sogainternational.com

