

Signare[®]

TAPESTRY DESIGN



Home Decor

About Signare

Signare is a vibrant British lifestyle brand. We design, manufacture and distribute stylish fashion bags and home furnishings featuring distinctly individual patterns.

The value of the brand is in the creation of Signare design artworks. Every Signare product has its own personality and a story to tell. Many of our designs are inspired by great art, and in our collection, you'll find iconic works – some of them licensed from world renowned museums and heritage organisations.

Signare designs include:

- Great Masterpieces such as the Mona Lisa, Starry Night, Poppy Field and Tree of Life.
- Works by famous designers including William Morris, Rennie Mackintosh and Charles Voysey.
- Patterns celebrating the lives and achievements of great figures from world history, including Jane Austen and William Shakespeare.
- Designs that reflect the color and variety of life itself, from garden wildlife to cute cats and adorable dogs, from historical landmarks to geometric patterns.

We have taken the ancient art of tapestry and given it a modern twist; every Signare design is reproduced in exquisite woven detail.

Our product distribution channels encompass a wide range of retail sectors, from department stores to museum gift shops, garden centers to heritage attractions, fashion boutiques to furniture and interior design stores – and more.

Our mission is to bring happiness and fun into the lives of our customers. Signare products make perfect personal treats or great gifts for special friends or family.



The Art and History of Tapestry

It is little wonder we often talk of 'life's rich tapestry' to describe the vibrancy of life itself; tapestry is a unique medium that captures shape, form, color and texture – suspending vivid images in fabric for all time. Many ancient examples of the art form are as fresh and vital today as when they were first woven centuries ago.

In medieval times, decorative tapestries were used as wall hangings to brighten and insulate damp and chilly buildings. The portability of tapestries was particularly useful for royalty and nobility, as they moved regularly from one residence to another. Appropriately, it is tapestries that commemorate two of the most pivotal events in English history: William the Conqueror's invasion in 1066 and the defeat of King Harold at the Battle of Hastings. The Bayeux Tapestry was produced to document this event.



3 Product Explorer - Bed Runners (BEDRUN)

Browse through our new collection of bed runners to add a bit of padding to your bed when you really need it. Bed runners are a great way to add a splash of color too!

- Size: 220 x 70 cm (86.6 x 27.5 inches)
- Fabric composition: 100% polyester
- Weight: 0.4lbs



BEDRUN-PIMPERNEL-GR



BEDRUN-PIMPERNEL-RD



BEDRUN-STBL



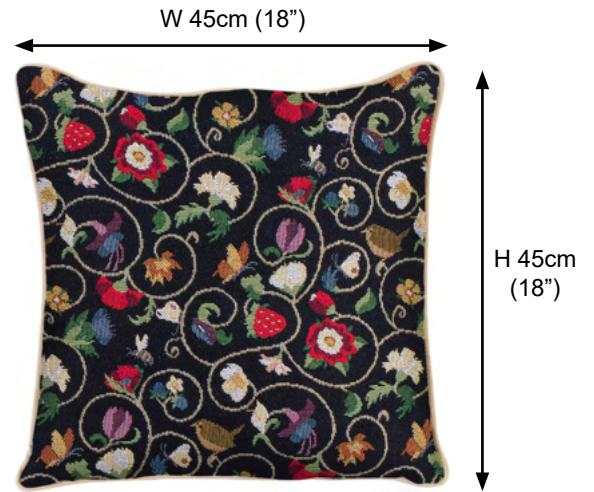
BEDRUN-STGR



BEDRUN-STRD

A decorative cushion cover that is sure to liven up any room in your house.

- Double sided tapestry cushion with a piped edge. The artwork is presented on both sides.
- Concealed zip on one end to allow pad to be removed for washing or replacement.
- Fabric composition for seamless cushion: 100% polyester
- Weight: 0.63lbs



CCOV-JACOB



CCOV-AUST



CCOV-BLOS



CCOV-BUTT



CCOV-CAT



CCOV-CHEKY



CCOV-CRAY



CCOV-CUDE



CCOV-FKICON



CCOV-FLAM



CCOV-FLMD



CCOV-GLILY



CCOV-HOR



CCOV-HUMM



CCOV-JANE



CCOV-JMTBK



CCOV-JMTWT

5 Product Explorer - Pillow Case (CCOV)



CCOV-KGCS



CCOV-KISS



CCOV-LAB



CCOV-LDBD



CCOV-LUXOR



CCOV-MGD



CCOV-MTRI



CCOV-ORC



CCOV-OWL



CCOV-PEO



CCOV-POP



CCOV-PUG



CCOV-PUPPY



CCOV-RMSP



CCOV-RMTD



CCOV-RSTT



CCOV-SAKURA



CCOV-STBL



CCOV-STRD



CCOV-TULWT



CCOV-WES



CCOV-WIOW



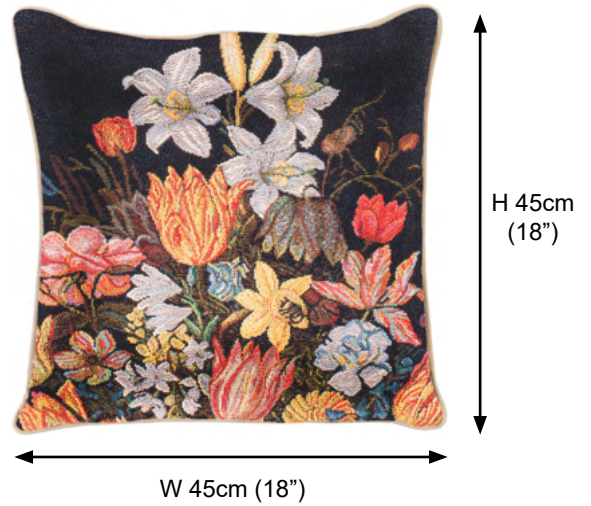
CCOV-RHOR



CCOV-WHISTLE

Signare panel art cushions feature masterpieces from famous artists such as Vincent van Gogh and Leonardo da Vinci.

- Double sided tapestry cushion with a piped edge. The artwork is presented on both sides.
- Concealed zip on one end to allow pad to be removed for washing or replacement.
- Fabric composition: 55% cotton; 45% polyester
- Weight: 0.63lbs



CCOV-ART-AB-STILL



CCOV-ART-ED-BLR-1



CCOV-ART-ED-BLR-2



CCOV-ART-JP-WAVE



CCOV-ART-JV-GIRL



CCOV-ART-KLIMT-1



CCOV-ART-KLIMT-2



CCOV-ART-KLIMT-3



CCOV-ART-KLIMT-4



CCOV-ART-LDV-ERMINE



CCOV-ART-LDV-MONA



CCOV-ART-LU-DE



CCOV-ART-LU-HE



CCOV-ART-LU-SI



CCOV-ART-LU-SM



CCOV-ART-LU-TA



CCOV-ART-MONET-1



CCOV-ART-MONET-2



CCOV-ART-MONET-3



CCOV-ART-MORRIS-1



CCOV-ART-MORRIS-2



CCOV-ART-MORRIS-3



CCOV-ART-MORRIS-4



CCOV-ART-MORRIS-5



CCOV-ART-MORRIS-6



CCOV-ART-MORRIS-7



CCOV-ART-TS-CHAT



CCOV-ART-VANGOGH-1



CCOV-ART-VANGOGH-2



CCOV-ART-VANGOGH-3



CCOV-ART-VG-WHEAT



CCOV-ART-WC-SWAN



CCOV-ART-ARTLOTUSBG



CCOV-ART-ARTLOTUSBL



CCOV-ART-ARTLOTUSDRD



CCOV-ART-AT-TREEBL



CCOV-ART-AT-TREEDRD



CCOV-ART-JA-AMERICANSWAN



CCOV-ART-JA-PINKFLAMINGO



CCOV-ART-JA-TROPICALBIRD



CCOV-ART-LU-FOXBL



CCOV-ART-LU-FOXDRD



CCOV-ART-LU-RABBITBL



CCOV-ART-LU-RABBITDRD



CCOV-ART-LU-SQUIRRELBL



CCOV-ART-LU-SQUIRRELRD



CCOV-ART-LU-TREEBL



CCOV-ART-LU-TREERD



CCOV-ART-VG-
CHAMPPRESALPILLES



CCOV-ART-VG-MTREE



CCOV-ART-VG-PLANETREE



CCOV-ART-VG-
STREETAUVERS

Our Panelled Cushions come finished with overlocked edges and beautiful designs printed on our Woven Tapestry fabric. They are perfect for creating that relaxed stylish and chic interior.

- Double sided cushions for sofa with piped edge. The artwork is represented on both sides. Concealed zip on one end to allow pad to be removed for washing or replacement.
- Fabric composition: 100%polyester
- Weight: 0.4lbs



CCOV-PN-BLACKTHORN



CCOV-PN-BLTULIP



CCOV-PN-BOURNE



CCOV-PN-BUS



CCOV-PN-CHIBG



CCOV-PN-CHIOL



CCOV-PN-CRWBK



CCOV-PN-CRWWT



CCOV-PN-FDLBL



CCOV-PN-FDLRD



CCOV-PN-HYACIN



CCOV-PN-PIMPERNEL-GN



CCOV-PN-PIMPERNEL-RD



CCOV-PN-POME



CCOV-PN-PUGBG



CCOV-PN-PUGRD



CCOV-PN-SCOTTIE



CCOV-PN-STAG



CCOV-PN-STGR



CCOV-PN-TUVASE



CCOV-PN-UJ



CCOV-PN-UJBULL



CCOV-PN-UJGUT



CCOV-PN-WJACKET



CCOV-PN-YOGAC1

Vincent van Gogh (1853-1890, Dutch Painter)

The Dutch Post-Impressionist painter, Vincent van Gogh, is one of the most famous and beloved artists of all time. He created over 2000 pieces of art but never found fame during his lifetime, dying at just 37 after struggling with mental illness and poverty.



WH-VG-SF-SM
W 27" (69cm) x H 35" (89cm)
Sun Flower



WH-VG-SF
W 37" (94cm) x H 55" (140cm)
Sun Flower
(Wall hanging rod not included)



WH-VG-GARDENARLES
W142 x H112 CM (W56 x H44 INCH)
Van Gogh Garden Arles



WH-VG-CT
W 39" (99cm) x H 55" (140cm)
Cafe Terrace



WH-VG-SN-BG
W 54" (137cm) x H 34" (86cm)
Van Gogh Starry Night

Claude Monet (1840-1926, French Painter)

Claude Monet helped give rise to the Impressionist movement in France during the late 1800s. Much of his artwork depicts landscapes in which he painted certain scenes a number of times to capture the changing light and seasons.

Monet purchased a house and gardens in Giverny, France during the 1880s, which he used as inspiration for a number of his paintings. This included designing the layout for the plants, trees, lakes and even installing a Japanese bridge.



WH-CM-WL
W 58" (147cm) x H 27" (69cm)
Water Lily
(Wall hanging rod not included)



WH-CM-GARDENGIVERNY
W142 x H142 CM (W56 x H56 INCH)
Claude Monet Giverny Garden



WH-CM-JB
W 53" (135cm) x H 55" (140cm)
Japanese Bridge
(Wall hanging rod not included)



WH-CM-JB-SMALL
W 27" (69cm) x H 29" (74cm)
Japanese Bridge

The Lady and the Unicorn

The Lady and the Unicorn is a collection of six tapestries dating from around 1500 AD. Five of the tapestries are considered to depict the five senses of smell, taste, touch, hearing and sight.

Each picture depicts a noble lady in the centre with a unicorn on her left and a lion on her right. Other animals are also shown, including a monkey in some scenes.

The artwork currently resides in the Thermes de Cluny in Paris.

(Wall hanging rod and tassels not included)



WH-LU-DE
W 47" (120cm) x H 33" (85cm)
A Mon Seul Desir



WH-LU-SI
W 47" (120cm) x H 33" (85cm)
Sense of Sight



WH-LU-TA
W 47" (120cm) x H 33" (85cm)
Sense of Taste



WH-LU-HE
W 33" (85cm) x H 47" (120cm)
Sense of Hearing



WH-LU-SM
W 33" (85cm) x H 47" (120cm)
Sense of Smell



WH-LU-TO
W 33" (85cm) x H 47" (120cm)
Sense of Touch



WH-LU-DE-SM
W 32" (81cm) x H 27" (69cm)
A Mon Seul Desir SMALL



WH-LU-LION
W59 x H142 CM (W23 x H56 INCH)
Lady and Unicorn Lion

William Morris (1834-1986, British Designer)

William Morris was a famous British textile designer during the 1800s. He is considered to be a major contributor in helping the British textile industry and their methods of production to grow and improve during this time.

Morris created hundreds of textile and patterns during his lifetime, teaching himself about embroidery and becoming an expert in the process of how to dye materials.

(Wall hanging rod not included)



WH-WM-ACANTHUS
W89 x H139 CM (W35 x H54.7 INCH)
William Morris Acanthus



WH-WM-BROOKBK
W142 x H124 CM (W56 x H49 INCH)
William Morris the Brooks Black



WH-WM-BROOKRD
W142 x H124 CM (W56 x H49 INCH)
William Morris the Brooks Red



WH-WM-COCKPHEASANT
 W92 x H142 CM (W36 x H56 INCH)
 William Morris the Cock & Pheasant



WH-WM-PEACOCK
 W 54.7" (139cm) x H 36.2" (92cm)
 William Morris Peacock



WH-WM-LNFST
 W 55" (139cm) x H 34" (87cm)
 Lion and the Forest



WH-WM-WP
 W 27" (69cm) x H 55" (140cm)
 Woodpecker in Fruit Tree

William Morris Tree of Life Collection

The Tree of Life is a symbol of the abundance and continuity of life. It was inspired by a decorative technique known as Mille Fleur (French for 'Thousand Flowers'), meaning to create a background with many flowers, plants and other ornamental elements.

(Wall hanging rod not included)



WH-WM-TLBL-1
W 41" (104cm) x H 55" (140cm)
Tree of Life Blue 1



WH-WM-TLRD-1
W 41" (104cm) x H 55" (140cm)
Tree of Life Red 1



WH-WM-TLBL-2
W 27" (69cm) x H 63" (160cm)
Tree of Life Blue 2



WH-WM-TLRD-2
W 27" (69cm) x H 63" (160cm)
Tree of Life Red 2



WH-WM-TLBL-BIG
W 54" (139cm) x H 77" (197cm)
Tree of Life Blue BIG



WH-WM-TLRD-BIG
W 54" (139cm) x H 77" (197cm)
Tree of Life Red BIG

Gustav Klimt (1862-1918, Austrian Artist)

Gustav Klimt is known for his paintings, murals and sketches, with the female body being a primary inspiration for his work. The early 1900s saw Klimt go through his 'Golden Phase', which was critically and commercially successful for him. This period is defined by his bold use of gold leaf and abstract depictions of the human form.

The tree of life has been used by many cultures to symbolise the connection between heaven and the underworld. The sacred tree having many religious or philosophical connotations. Klimt's *The Tree of Life* was painted in 1909 in the style of Art Nouveau. It was commissioned as a series of three mosaics to be displayed in the Palais Stoclet in Brussels, Belgium.

(Wall hanging rod not included)



WH-GK-TL-1
W 54" (137cm) x H 32" (81cm)
Tree of Life-Whole



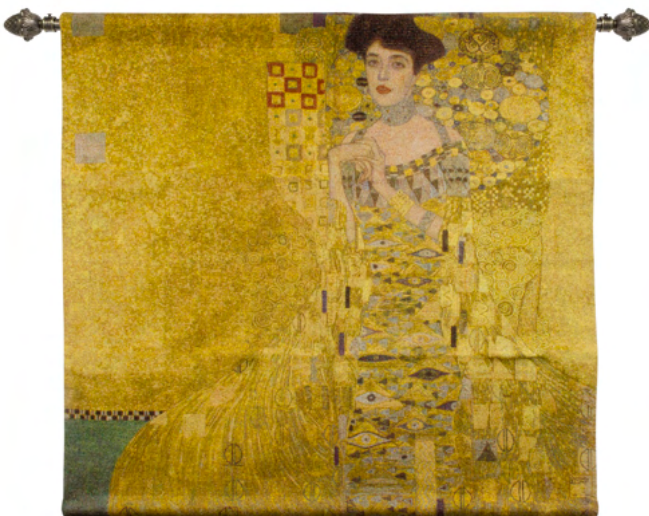
WH-GK-TL-2
W 31" (79cm) x H 54" (137cm)
Tree of Life - Tree Only



WH-GK-LF
W 39" (99cm) x H 39" (99cm)
Lady with Fan
(Wall hanging rod not included)



WH-GK-COUNTRYGRD
W124 x H142 CM (W49 x H56 INCH)
Gustav Klimt Country Garden



WH-GK-WGD
W 39" (100cm) x H 38" (96cm)
Woman in Gold
(Wall hanging rod not included)



WH-GK-KS
W 35" (89cm) x H 45" (114cm)
The Kiss
(Wall hanging rod not included)



WH-AULF
W 55" (140cm) x H 55" (140cm)
Autumn Leaves



WH-AULF-SM
W 39" (99cm) x H 39" (99cm)
Autumn Leaves



WH-AV-BIRD&FOLIAGE
W 88 x H 142 CM (W35 x H56 INCH)
Aubusson Verdure Bird and Foliage



WH-BAYEUX-HORSE
 W139 x H81 CM (W54.7 x H31.8 INCH)
 Bayeux Tapestry, Horse



WH-BAYEUX-SHIP
 W139 x H81 CM (W54.7 x H31.8 INCH)
 Bayeux Tapestry, Ship



WH-BT-HB
 W150 x H46 CM (W59 x H18 INCH)
 Bayeux Tapestry Hastings Battle



WH-BWF
 W 37" (94cm) x H 54" (137cm)
 Blue Wild Flowers



WH-CELADON
 W 22" (56cm) x H 18" (46cm)
 Celadon Flower Pot

(Wall hanging rod not included)



WH-EB-AC
W 39" (99cm) x H 55" (140cm)
Accolade



WH-EB-GS
W 39" (99cm) x H 55" (140cm)
God Speed



WH-EWF
W 40" (102cm) x H 55" (140cm)
European Window Flowers



WH-F&F
W 39" (100cm) x H 52" (132cm)
Fruit and Floral



WH-FC
W 54" (137cm) x H 36" (91cm)
French Countryside



WH-FGP
W 39" (98cm) x H 54" (137cm)
Still Life with Flowers and Fruit by Jan Frans van Dael



WH-FIELD
W 54" (137cm) x H 58" (147cm)
Wheat Field



WH-FL
W 27" (69cm) x H 20" (51cm)
White Flower



WH-FL-BG
W 55" (140cm) x H 41" (104cm)
White Flower BIG



WH-FL-FLAM
W 39" (99cm) x H 39" (99cm)
Flaming June

(Wall hanging rod not included)



WH-FLC
W 43" (109cm) x H 54" (137cm)
Flower Canvas



WH-G&W
W 54" (137cm) x H 39" (99cm)
Grape and Wine



WH-GS-LGJ
W 55" (140cm) x H 37" (94cm)
A Sunday Afternoon on the Island of La Grande Jatte



WH-GTL
W 54" (137cm) x H 38" (97cm)
A present to Lindsay



WH-HU
W 39" (99cm) x H 39" (99cm)
The Hunt of the Unicorn



WH-JP-GWK
W 39" (99cm) x H 27" (69cm)
Great Wave off Kanagawa



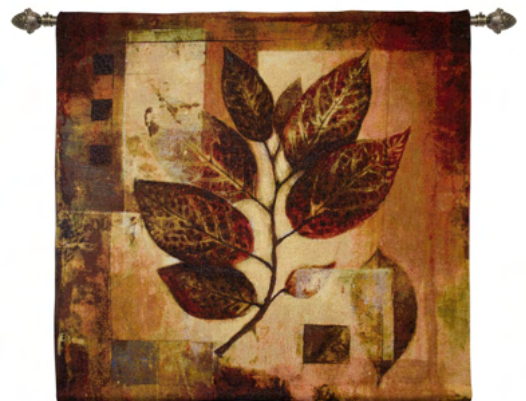
WH-KALEDO
W 27" (69cm) x H 27" (69cm)
Kaleidoscope Red



WH-KF
W 52" (132cm) x H 36" (91cm)
Kissing Flowers



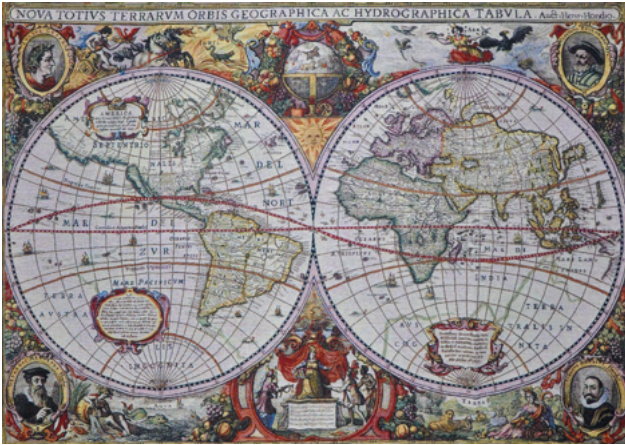
WH-LAND
W 55" (140cm) x H 35" (89cm)
Landscape with river and mountain



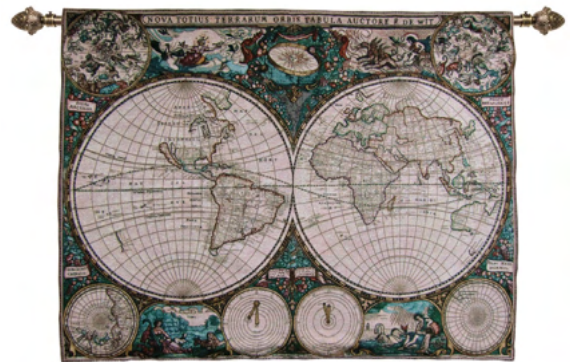
WH-LEAVES
W 39" (99cm) x H 39" (99cm)
Leaves

27 Product Explorer - Wall Hangings (WH)

(Wall hanging rod not included)



WH-MAP-1
W 55" (140cm) x H 39" (99cm)
WH-Map-1



WH-MAP-2
W 55" (140cm) x H 43" (109cm)
WH-Map-2



WH-MAP-OLD
W 55" (140cm) x H 38" (97cm)
WH-Map-Old



WH-OT
W 54" (137cm) x H 38" (97cm)
Old Times



WH-PAR-2SISTERS
W 27" (69cm) x H 31.5" (80cm)
Pierre Auguste Renoir - Two Sisters



WH-PCL
W 54" (137cm) x H 42" (107cm)
Peaceful Country Life



WH-POF
W 39" (99cm) x H 38" (97cm)
Pot of Flower



WH-R&V
W 54" (137cm) x H 40" (102cm)
Rose and Violin



WH-RG
W 40" (102cm) x H 58" (147cm)
Royal Gardens



WH-SNOR
W 55" (140cm) x H 36" (91cm)
Stary Night over Rhone

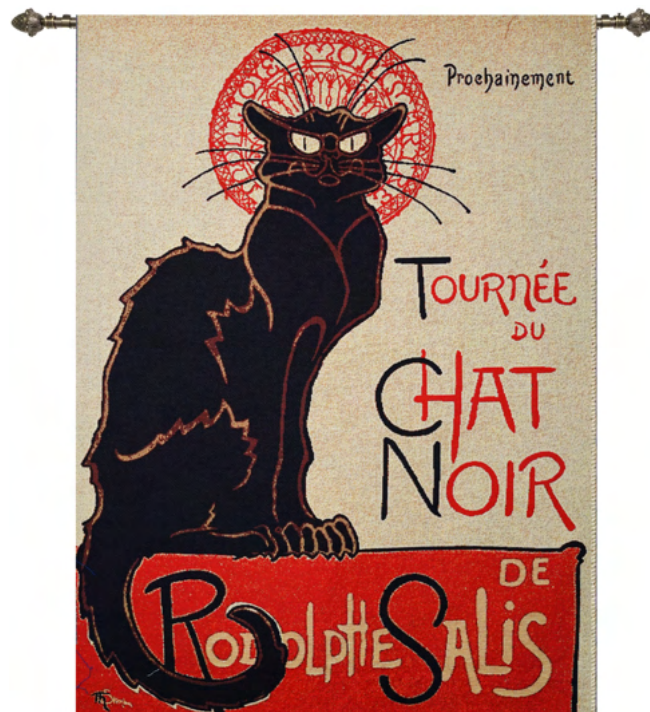
(Wall hanging rod not included)



WH-STREET
W 55" (140cm) x H 34" (86cm)
Street Corner



WH-TOS
W 54" (137cm) x H 39" (99cm)
Toscana



WH-TS-CHAT
W 27" (69cm) x H 38.5" (98cm)
Théophile Steinlen-Tournée du Chat Noir



WH-TULIPVS
W 54" (137cm) x H 39" (99cm)
Tulips in a Vase



WH-VENEICE
W 54" (137cm) x H 40" (102cm)
Venice View



WH-VG
W 53" (135cm) x H 39" (99cm)
Venetian Gondolier



WH-FLD-GOTHICFLORAL
W142 x H107 CM (W56 x H42 INCH)
Flemish Gothic Building and Floral



WH-FLD-VERDRE&FIELD
W142 x H88 CM (W56 x H34 INCH)
Flemish-Verdure and Field



WH-FLD-VERDURE&MULTEER
W142 x H112 CM (W56 x H44 INCH)
Flemish-Verdure and Multeer



WH-FORRFALL
W139 x H96 CM (W54.7 x H37.8 INCH)
Fall in the Forrest



WH-GARDEN
W107 x H138 CM (W42.1 x H54.3 INCH)
Garden with Summer Flowers



WH-GC-PARISRAINY
W120 x H85 CM (W47.2 x H33.4 INCH)
Street View in Paris Rain



WH-HEC-AFTERNOONGARDEN
W142 x H96 CM (W56 x H38 INCH)
Henri Edmond Cross-Afternoon Garden



WH-HUNTING
W195 x H139 CM (W76.8 x H54.7 INCH)
Hunting



WH-HR-EQUATORIALJUNGLE
W142 x H142 CM (W56 x H56 INCH)
Henri Rousseau Equatorial Jungle



WH-HR-EXOTICLANDSCAPE
W142 x H142 CM (W56 x H56 INCH)
Henri Rousseau Exotic Landscape



WH-LAKESIDE
W139 x H101 CM (W54.7 x H39.7 INCH)
Lake Side View



WH-LAKEVIEW
W139 x H106 CM (W54.7 x H41.7 INCH)
Lake View



WH-LCT-MAG&IRIS
W142 x H142 CM (W56 x H56 INCH)
Louis Tiffany Magnolia



WH-LCT-OYSTERBAY
W142 x H142 CM (W56 x H56 INCH)
Louis Tiffany Oyster Bay



WH-MAYFLOWER
 W119 x H139 CM (W46.8 x H54.7 INCH)
 Flowers in May



WH-MJ-ORCHIDBIRD
 W142 x H104 CM (W56 x H41 INCH)
 Martin Johnson-Orchid Hummingbird



WH-MJ-PASSIONFLOWERBIRD
 W142 x H104 CM (W56 x H41 INCH)
 Martin Johnson-Passion Flower Hummingbird



WH-POPPY
 W68 x H83 CM (W26.7 x H32.6 INCH)
 Poppy Field



WH-PR-APPLETREE
W138 x H97 CM (W54.3 x H38.1 INCH)
Apple Trees



WH-PORCART
W124 x H142 CM (W49 x H56 INCH)
Porcelain Art



WH-SB-PRIMAVERA
W139 x H90 CM (W54.7 x H35.4 INCH)
Primavera



WH-VASEFRUIT
W139 x H97 CM (W38.1 x H54.7 INCH)
Fruit in a Vase



WH-WHITEPROC
W69 x H91 CM (W35.8 x H27.1 INCH)
White Porcelain



WH-WILDFIELD
W139 x H93 CM (W54.7 x H36.6 INCH)
Wild Field with Trees



WH-WINTERCH
W139 x H89 CM (W54.7 x H35.0 INCH)
Church with Snow Field



WH-ROD-120

- Wall hanging rod with 2 wall mounting brackets
- Size: 47.2" extendable to 60"
- Colour: Brush Brass
- Material: Steel
- Coating: Electroplating bronze



WH-TASS

- 2 x hanging tassels for decoration
- Size: 70cm (27.5")
- Material: Polyester

