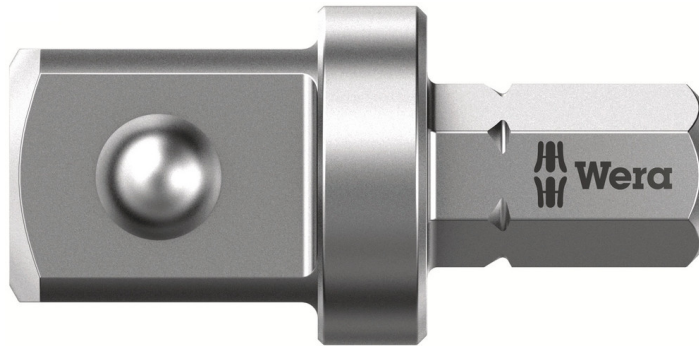


## 870/2 Adaptor, 3/8 x 5/16"

### Adaptors



<b>EAN:</b>	4013288184245	<b>Size:</b>	25x8x8 mm
<b>Part number:</b>	05136001001	<b>Weight:</b>	19 g
<b>Article number:</b>	870/2	<b>Country of origin:</b>	CZ
		<b>Customs tariff number:</b>	84661038

- Adaptor for machine-operated nut spinner sockets
- 3/8" external square
- 5/16" hexagon drive

Tool shank for power tool sockets with square head output. 5/16" hexagonal drive.

#### Web link

[https://products.wera.de/en/bits HOLDERS\\_adaptors\\_and\\_sets HOLDERS\\_adaptors\\_connectors\\_adaptors\\_870\\_2.html](https://products.wera.de/en/bits HOLDERS_adaptors_and_sets HOLDERS_adaptors_connectors_adaptors_870_2.html)

Wera - 870/2  
05136001001 - 4013288184245

Wera Werkzeuge GmbH  
Korzter Straße 21-25  
D-42349 Wuppertal  
Tel: +49 (0)2 02 / 40 45-0  
E-Mail: [info@wera.de](mailto:info@wera.de)

# 870/2 Adaptor, 3/8 x 5/16"





## Adaptors

### With ball



With friction ball; for manual nut spinner sockets

### Further versions in this product family:

	 inch	 mm	 inch	 inch
05136002001 <sup>1)</sup>	1/2"	35	1 3/8"	5/16"
05136001001 <sup>1)</sup>	3/8"	30	1 3/16"	5/16"

1) With friction ball; for manual nut spinner sockets

### Web link

[https://products.wera.de/en/bits HOLDERS\\_adaptors\\_and\\_sets HOLDERS\\_adaptors\\_connectors\\_adaptors\\_870\\_2.html](https://products.wera.de/en/bits HOLDERS_adaptors_and_sets HOLDERS_adaptors_connectors_adaptors_870_2.html)

Wera - 870/2

05136001001 - 4013288184245

Wera Werkzeuge GmbH

Korzter Straße 21-25

D-42349 Wuppertal

Tel: +49 (0)2 02 / 40 45-0

E-Mail: [info@wera.de](mailto:info@wera.de)