



<b>EAN:</b>	4013288204295	<b>Size:</b>	89x7x7 mm
<b>Part number:</b>	05134857001	<b>Weight:</b>	24 g
<b>Article number:</b>	3867/4 TORX®	<b>Country of origin:</b>	CZ
		<b>Customs tariff number:</b>	82079030

- For recessed TORX® screws
- Stainless Steel Bits
- Solution to the extraneous rust problem: fasten stainless screws with stainless tools
- Vacuum ice-hardened
- 1/4" hexagon drive (Wera connecting series 4)
- Take it easy tool finder: colour coding according to profile and size

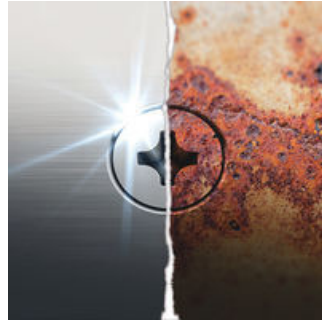
High quality bits out of stainless steel for recessed TORX® screws. Wera stainless are made out of stainless steel which prevents the formation of unsightly extraneous rust. 1/4" hexagon, suitable for holders as per DIN ISO 1173-F 6.3.

**Web link**

Wera - 3867/4 TORX®  
05134857001 - 4013288204295

Wera Werkzeuge GmbH  
Korzter Straße 21-25  
D-42349 Wuppertal  
Tel: +49 (0)2 02 / 40 45-0  
E-Mail: info@wera.de

**Stainless Steel Bits**



Wera stainless steel bits are manufactured out of stainless steel so unsightly rust can be avoided. The stainless steel bits from Wera are vacuum ice-hardened and have the hardness and strength needed for screw connections. There are no limitations to the industrial applications they are suitable for.

**Screw stainless steel together with stainless steel!**



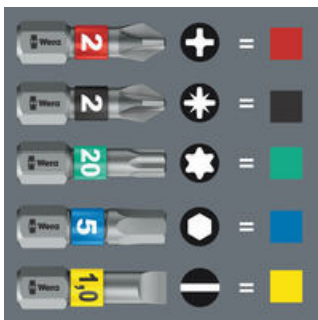
Solution to the rust problem: screwdriving stainless steel together with stainless steel! Wera stainless steel tools are manufactured out of stainless steel so unsightly rust can be avoided.

**Vacuum ice-hardened**



The stainless steel tools from Wera are vacuum ice-hardened and have the hardness and strength needed for screw connections. There are no limitations to the industrial applications they are suitable for.

**“Take it easy” tool finder**



"Take it easy" tool finder with colour coding according to profiles and size stamp - for simple and rapid accessing of the required tool.

**Web link**

Wera - 3867/4 TORX®  
05134857001 - 4013288204295

Wera Werkzeuge GmbH  
Korzerter Straße 21-25  
D-42349 Wuppertal  
Tel: +49 (0)2 02 / 40 45-0  
E-Mail: info@wera.de