

7782 C Ratchet insert, reversible, 14x18 mm, 14x18 x 1/2" x 66 mm

Insert tools with ratchet functionality



EAN:	4013288196552	Size:	67x43x42 mm
Part number:	05078707001	Weight:	273 g
Article number:	7782 C	Country of origin:	TW
		Customs tariff number:	82079099

- For torque wrenches of the Click-Torque X series with 14x18 mm holder
- For 1/2" square socket wrench inserts and 1/2" connecting parts with square drive
- Fine tothing with 72 teeth
- Easy switching by knob
- Socket lock by push button

Ratchet insert, reversible, for 1/2" square socket wrench inserts and 1/2" connecting parts with square drive; for torque wrenches of the Click-Torque X series with 14x18 mm holder.

Web link

https://products.wera.de/en/torque_tools_series_click-torque_wrenches_series_insert_tools_insert_tools_with_ratchet_functionality_7782_c.html

Wera - 7782 C
05078707001 - 4013288196552

Wera Werkzeuge GmbH
Korzter Straße 21-25
D-42349 Wuppertal
Tel: +49 (0)2 02 / 40 45-0
E-Mail: info@wera.de

Insert tools with ratchet functionality

Drive 14x18 mm

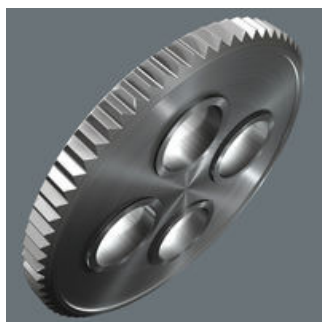
Small return angle

1/2" external square

Easy switching



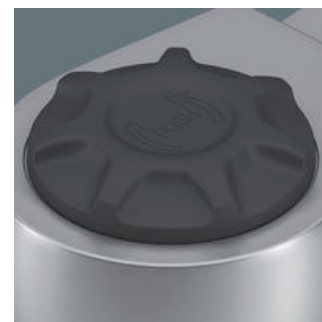
For torque wrenches of the Click-Torque X series with 14x18 mm holder.



Fine-pitched with 72 teeth for a return angle of only 5°



For 1/2" square socket wrench inserts and 1/2" connecting parts with square drive.



Easy switching by knob.

Secure socket locking

Chrome vanadium steel



Safe socket lock via push button



The chrome-vanadium steel version makes the plug-in tools suitable for heavy loads.

Further versions in this product family:

	mm	inch	mm	mm	mm	mm	mm
05078707001	14x18	1/2"	20.0	66.0	41.0	42.0	23.0

Web link

https://products.wera.de/en/torque_tools_series_click-torque_wrenches_series_insert_tools_insert_tools_with_ratchet_functionality_7782_c.html

Wera - 7782 C
05078707001 - 4013288196552

Wera Werkzeuge GmbH
Korzter Straße 21-25
D-42349 Wuppertal
Tel: +49 (0)2 02 / 40 45-0
E-Mail: info@wera.de