

7773 B Square drive insert, 9x12 mm, 9x12 x 3/8" x 44 mm

Insert tools with square head



EAN:	4013288023759	Size:	18x22x21 mm
Part number:	05078205001	Weight:	72 g
Article number:	7773 B	Country of origin:	TW
		Customs tariff number:	82079099

- Square insert tool 9x12 mm
- For torque wrenches of the Click-Torque X series with 9x12 mm holder
- For 3/8" square socket wrench inserts and 3/8" connecting parts with square drive
- With safety pin
- The chrome-vanadium steel version makes the plug-in tools suitable for heavy loads

Square drive insert, for 3/8" square socket wrench inserts and 3/8" connecting parts with square drive; for torque wrenches of the Click-Torque X series with 9x12 mm holder.

Web link

https://products.wera.de/en/torque_tools_series_click-torque_wrenches_series_insert_tools_insert_tools_with_square_head_7773_b.html

Wera - 7773 B
05078205001 - 4013288023759

Wera Werkzeuge GmbH
Korzter Straße 21-25
D-42349 Wuppertal
Tel: +49 (0)2 02 / 40 45-0
E-Mail: info@wera.de

Insert tools with square head

Drive 9x12 mm

3/8" external square

With safety pin

Chrome vanadium steel



For torque wrenches of the Click-Torque X series with 9x12 mm holder.



For 3/8" square socket wrench inserts and 3/8" connecting parts with square drive.



The safety pin of the insert tools enables safe working and fast tool change.



The chrome-vanadium steel version makes the plug-in tools suitable for heavy loads.

Further versions in this product family:



mm



inch



mm



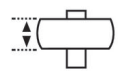
mm



mm



21.0



14

05078205001

9x12

3/8"

17.5

44.0

28.0

Web link

https://products.wera.de/en/torque_tools_series_click-torque_wrenches_series_insert_tools_insert_tools_with_square_head_7773_b.html

Wera - 7773 B

05078205001 - 4013288023759

Wera Werkzeuge GmbH

Korzter Straße 21-25

D-42349 Wuppertal

Tel: +49 (0)2 02 / 40 45-0

E-Mail: info@wera.de