

## Click-Torque X 5 torque wrench for insert tools, 60-300 Nm, 14x18 x 60-300 Nm

Click-Torque adjustable torque wrenches for insert tools



<b>EAN:</b>	4013288193810	<b>Size:</b>	600x60x60 mm
<b>Part number:</b>	05075655001	<b>Weight:</b>	1439 g
<b>Article number:</b>	Click-Torque X 5	<b>Country of origin:</b>	TW
		<b>Customs tariff number:</b>	82041100

- For 14x18 mm interchangeable insert tools
- Easy setting and saving of the desired torque value with audible and tactile clicks when reaching the scale values
- Audible and tactile release mechanism when the set torque value is reached
- Measuring range: 60-300 Nm; Precise to +/- 3% as per DIN EN ISO 6789-1:2017-07
- Very robust design with ergonomic 2-component handle suitable for right and left-handed use

Click-Torque wrench in the unmistakable, robust Wera design with high accuracy as per DIN EN ISO 6789-1: 2017-07. Easy setting and saving of the default value. The audible and tactile clicks on reaching the scale values also facilitate the safe setting of the desired torque value. The robust release mechanism guarantees a clearly audible and tactile release signal when the set torque is reached. For right and left-hand use and with square insert 14x18mm for insert tools.



### Web link

[https://products.wera.de/en/torque\\_tools\\_series\\_click-torque\\_wrenches\\_click-torque\\_adjustable\\_torque\\_wrenches\\_for\\_insert\\_tools\\_click-torque\\_x\\_5.html](https://products.wera.de/en/torque_tools_series_click-torque_wrenches_click-torque_adjustable_torque_wrenches_for_insert_tools_click-torque_x_5.html)

Wera - Click-Torque X 5  
05075655001 - 4013288193810

Wera Werkzeuge GmbH  
Korzertter Straße 21-25  
D-42349 Wuppertal  
Tel: +49 (0)2 02 / 40 45-0  
E-Mail: [info@wera.de](mailto:info@wera.de)

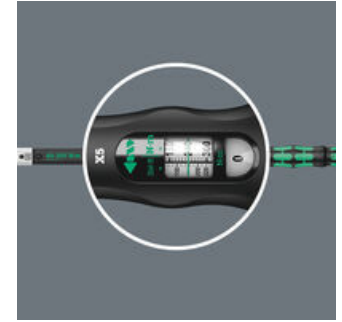
Click-Torque adjustable torque wrenches for insert tools

Click-Torque Wrench series

Drive 14x18 mm

Exact

Simple and safe



We wanted working with torque wrenches to be simple and accurate which is why we developed the Click-Torque wrenches. With the ability to set and save the default values and with the unmistakable, robust Wera design, these torque wrenches are the ideal tools for all bolting applications that require torque-controlled tightening (clockwise torque wrenches) and tightening and loosening (torque wrenches for insert tools).

For torque wrenches of the Click-Torque X series with 14x18 mm holder.

Precise to  $\pm 3\%$  as per DIN EN ISO 6789-1:2017-07.

Easy setting and saving of the desired torque value; readable on the main and fine scales.

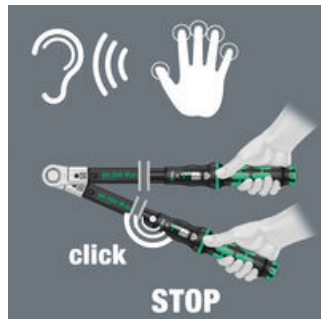
Simple setting

Release mechanism

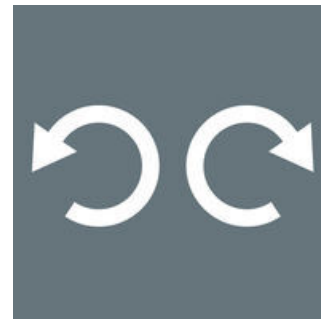
For right and left direction



With audible and tactile clicks when adjusting the scale values.



When the set torque value is reached, an audible and tactile mechanism triggers.



The Click-Torque wrenches for insert tools are suitable for clockwise and counterclockwise uses.

Web link

[https://products.wera.de/en/torque\\_tools\\_series\\_click-torque\\_wrenches\\_click-torque\\_adjustable\\_torque\\_wrenches\\_for\\_insert\\_tools\\_click-torque\\_x\\_5.html](https://products.wera.de/en/torque_tools_series_click-torque_wrenches_click-torque_adjustable_torque_wrenches_for_insert_tools_click-torque_x_5.html)

Wera - Click-Torque X 5  
05075655001 - 4013288193810

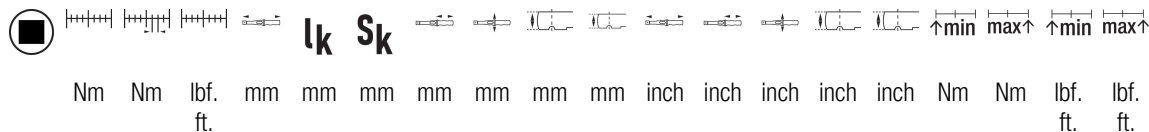
Wera Werkzeuge GmbH  
Korzerter Straße 21-25  
D-42349 Wuppertal  
Tel: +49 (0)2 02 / 40 45-0  
E-Mail: info@wera.de

# Click-Torque X 5 torque wrench for insert tools, 60-300 Nm, 14x18 x 60-300 Nm



Click-Torque adjustable torque wrenches for insert tools

Further versions in this product family:



05075655001 <sup>1)</sup>	14x 18	60- 300	1.0	45- 220	578	525. 0	25.5	140	47	32	26	22 7 /16"	5 33 /64"	1 27 /32"	1 17 /64"	1 1/ 32"	60.0	300. 0	45.0	220. 0
---------------------------	-----------	------------	-----	------------	-----	-----------	------	-----	----	----	----	--------------	--------------	--------------	--------------	-------------	------	-----------	------	-----------

1) S<sub>k</sub> = Actual dimension of the test attachment; l<sub>k</sub> = Distance from the force application point to the test device axis

**Web link**

[https://products.wera.de/en/torque\\_tools\\_series\\_click-torque\\_wrenches\\_click-torque\\_adjustable\\_torque\\_wrenches\\_for\\_insert\\_tools\\_click-torque\\_x\\_5.html](https://products.wera.de/en/torque_tools_series_click-torque_wrenches_click-torque_adjustable_torque_wrenches_for_insert_tools_click-torque_x_5.html)

Wera - Click-Torque X 5  
05075655001 - 4013288193810

Wera Werkzeuge GmbH  
Korzter Straße 21-25  
D-42349 Wuppertal  
Tel: +49 (0)2 02 / 40 45-0  
E-Mail: info@wera.de