

Kraftform Kompakt 26 with pouch, 7 pieces

Kraftform Kompakt 20, 22, 25, 26, 27, 28



EAN:	4013288098948	Size:	195x95x64 mm
Part number:	05051025001	Weight:	260 g
Article number:	KK 26	Country of origin:	CZ
		Customs tariff number:	82079030

- Retractable bayonet blade
- Integrated magazine for bit storage
- Tough viscous bits for universal use
- In robust pouch
- Ergonomic Kraftform handle for low-fatigue working

Wera compact tools enable both manual as well as power tool operations at the same time. The handle/interchangeable blade system in a compact design with various blade tips in the smallest of spaces makes the user more mobile and flexible. Suitable for bits with 1/4" hexagon head drive as per DIN ISO 1173-C 6.3 and E 6.3 (ISO 1173) and Wera connecting series 1 and 4. Comes with an adaptor, bayonet and Rapidaptor technology. Kraftform handle with anti-roll feature, multi-component for particularly ergonomic screwdriving. Integrated magazine for bit storage. The telescopic bayonet blade - which can be lowered into the handle - together with the quick-release chuck allows fast manual work even in confined installation situations when the blade is retracted. The blade can be extended by simply actuating the locking sleeve. The bayonet holder can then be used as a fully-fledged screwdriver. The bayonet blade can be removed and used as a power tool adaptor, but can also be retracted once again to its original position. Includes practical belt pouch.



Web link

https://products.wera.de/en/kraftform_kompakt_kraftform_kompakt_20_22_25_26_27_28_kk_26.html

Wera - KK 26
05051025001 - 4013288098948

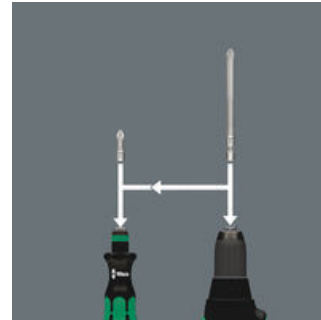
Wera Werkzeuge GmbH
Korzter Straße 21-25
D-42349 Wuppertal
Tel: +49 (0)2 02 / 40 45-0
E-Mail: info@wera.de

Telescopic blade, integrated bit magazine, Rapidaptor technology



The sets in the series Kraftform Kompakt 20 are really something. A 2 position telescopic blade can be retracted into the handle for confined space operation or extended for more reach. It can also be removed and used as a 100 mm bit holder in the power tool. Six bits are conveniently integrated into a push-button opening bit magazine. The Rapidaptor technology ensures rapid one hand bit changes, press-in auto bit lock and a secure positioning when used in power tools thanks to the free-turning sleeve.

Manual and power tool operations



The sets come with a Kraftform handle, quick-release chuck and bits for manual and power tool operations.

Handle/interchangeable blade system



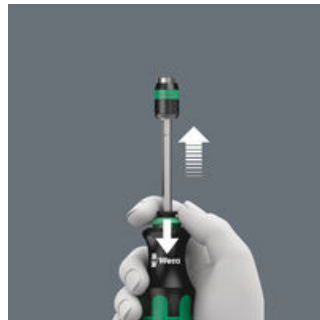
The handle/interchangeable blade system allows rapid exchange of the blades required for a wide range of applications.

The telescopic blade I



When the unique telescopic blade is lowered into the handle, fast, easy screw-driving action is possible, even in the tightest spots!

The telescopic blade II



By pushing the clamping sleeve, the telescopic blade can be extended out of the handle and the compact tool becomes a full-sized screwdriver.

The telescopic blade III



If the clamping sleeve is pushed again the telescopic blade can be taken out of the handle, and be used as a machine bit adaptor.

Rapidaptor holder



Rapid bit change without needing any additional tools. One-hand operation with a freely spinning sleeve for simplified guidance of the tool.

Web link

https://products.wera.de/en/kraftform_kompakt_kraftform_kompakt_20_22_25_26_27_28_kk_26.html

Wera - KK 26

05051025001 - 4013288098948

Wera Werkzeuge GmbH

Korzter Straße 21-25

D-42349 Wuppertal

Tel: +49 (0)2 02 / 40 45-0

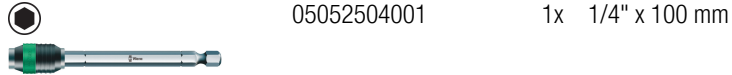
E-Mail: info@wera.de

Kraftform Kompakt 26 with pouch, 7 pieces

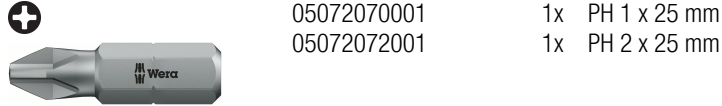
Kraftform Kompakt 20, 22, 25, 26, 27, 28

Set contents:

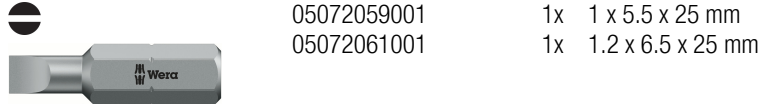
889/4 R Rapidaptor Universal Bit Holder, 1/4" x 100 mm



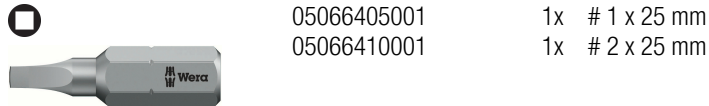
851/1 Z bits, PH 1 x 25 mm



800/1 Z bits, 1 x 5.5 x 25 mm



868/1 Z Square-Plus bits, # 1 x 25 mm



Hook and Loop Fastener Strip 70, 50 x 70 mm



Web link

https://products.wera.de/en/kraftform_kompakt_kraftform_kompakt_20_22_25_26_27_28_kk_26.html

Wera - KK 26

05051025001 - 4013288098948

Wera Werkzeuge GmbH

Korzter Straße 21-25

D-42349 Wuppertal

Tel: +49 (0)2 02 / 40 45-0

E-Mail: info@wera.de