



<b>EAN:</b>	4013288110237	<b>Size:</b>	178x33x33 mm
<b>Part number:</b>	05031601001	<b>Weight:</b>	59 g
<b>Article number:</b>	1162 i PH VDE	<b>Country of origin:</b>	CZ
		<b>Customs tariff number:</b>	82054000

- Insulated Kraftform Comfort VDE blades for safe working up to 1,000 volts
- Multi-component Kraftform handle for fast and low-fatigue working
- Handle markings simplify finding and sorting of tools
- Hexagonal anti-roll feature against rolling away
- The Wera Black Point tip offers an exact fit and optimum corrosion protection

High quality Kraftform Comfort VDE screwdriver. Multi-component Kraftform handle for fast and low-fatigue working. The Wera Black Point tip and a complex hardening process ensure a long service life of the tip, enhanced corrosion protection and an exact fit. Individual testing in a water bath at 10,000 volts so as to ensure safe working at the permitted voltage of 1,000 volts. The hexagonal anti-roll feature prevents any bothersome rolling away at the workplace. Handle markings for simplified finding and sorting of the tool.

#### Web link

Wera - 1162 i PH VDE  
05031601001 - 4013288110237

Wera Werkzeuge GmbH  
Korzter Straße 21-25  
D-42349 Wuppertal  
Tel: +49 (0)2 02 / 40 45-0  
E-Mail: [info@wera.de](mailto:info@wera.de)

**Individually tested**

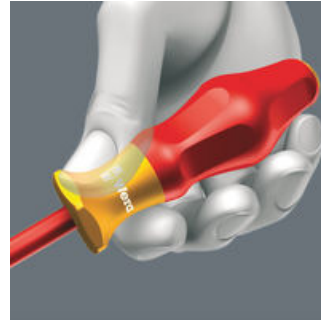


The ergonomic introduction to convenient screwdriving. Handle with Kraftform geometry and blade made from power bit material with Black Point tip for precise fit - and they are even VDE-tested, too.



The individual testing at 10,000 volts, in accordance with IEC 60900, ensures safe working with loads up to 1,000 volts.

**Kraftform Comfort Handle**



The multi-component Kraftform handle for quick and low-fatigue working.

**Non-roll feature**



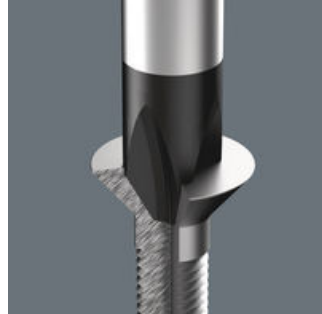
The hexagonal non-roll feature prevents any rolling away at the workplace.

**Identification marking**



The screw symbol and tip size identification markings on the handle make it easier to find the right screwdriver in the tool case, or at the workplace.

**Wera Black Point tip**



The Wera Black Point tip and a refined hardening process ensure long service life of the tip, improved corrosion protection and an exact fit.

**Web link**

Wera - 1162 i PH VDE  
05031601001 - 4013288110237

Wera Werkzeuge GmbH  
Korzter Straße 21-25  
D-42349 Wuppertal  
Tel: +49 (0)2 02 / 40 45-0  
E-Mail: info@wera.de