

8790 C Wheel Impaktor Socket with 1/2" drive, 19 x 85 x 30 mm

Zyklop Accessories, 1/2"



EAN:	4013288210746	Size:	155x45x33 mm
Part number:	05004591001	Weight:	221 g
Article number:	8790 C Wheel Impaktor	Country of origin:	TW
		Customs tariff number:	82042000

- For use with electric or pneumatic impact wrenches with 12.5mm = 1/2" drive
- Robust Impaktor design for extremely high stresses
- Smooth outer plastic sleeve to protect the rim when changing wheels
- Internal plastic insert to protect the wheel bolt surface
- Hexagonal profile enables precise and profile-preserving screwdriving with high power transmission
- With Take it easy tool finder: colour coding by size

Impaktor socket, 1/2", for use with impact wrenches, with rotating smooth plastic sleeve for higher working speed, better accuracy during screwdriving and additional rim protection.



Web link

https://products.wera.de/en/ratchets_and_accessories_the_zyklop_ratchets_the_zyklop_ratchets_1_2_zyklop_accessories_1_2_8790_c_wheel_impaktor.html

Wera - 8790 C Wheel Impaktor
05004591001 - 4013288210746

Wera Werkzeuge GmbH
Korzter Straße 21-25
D-42349 Wuppertal
Tel: +49 (0)2 02 / 40 45-0
E-Mail: info@wera.de

Zyklop Accessories, 1/2"

Impact wrench proof



The Wheel Impaktor sockets are designed for use with electric or pneumatic impact wrenches due to their robust Impaktor technology.

Smooth plastic sleeve



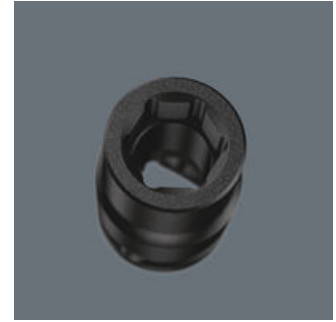
The rotating plastic sleeve allows for higher control during screwdriving. In addition, the surface of the rim is protected. The plastic sleeves are interchangeable.

Protection for wheel bolts



The internal plastic insert protects the surfaces of the wheel bolts.

Profile-friendly power transmission



The hexagon profile allows the transmission of high forces and puts less strain on the edges of bolts or screw heads than a double hexagon profile. Fine-toothed ratchets also make the use of a double hexagon profile superfluous, even in confined spaces, thanks to their small return angle.

Take it easy tool finder system



Take it easy tool finder system - with profile and size colour-coding for quick and easy tool selection. Colour-coded system for hexagon drive screws (L-Keys, Zyklop bit sockets), external hex drive screws and nuts (Joker wrenches, Zyklop sockets and Zyklop bit sockets with holding function), and TORX® drive screws (L-Keys, Zyklop bit sockets).




Web link

https://products.wera.de/en/ratchets_and_accessories_the_zyklop_ratchets_the_zyklop_ratchets_1_2_zyklop_accessories_1_2_8790_c_wheel_impaktor.html

Wera - 8790 C Wheel Impaktor
05004591001 - 4013288210746

Wera Werkzeuge GmbH
Korzter Straße 21-25
D-42349 Wuppertal
Tel: +49 (0)2 02 / 40 45-0
E-Mail: info@wera.de

Further versions in this product family:

				
		mm	mm	mm
05004590001	rot_200C	17.0	85.0	30.0
05004591001	blau_307C	19.0	85.0	30.0
05004592001	gruen_363C	21.0	85.0	32.0

Web link

https://products.wera.de/en/ratchets_and_accessories_the_zyklop_ratchets_the_zyklop_ratchets_1_2_zyklop_accessories_1_2_8790_c_wheel_impaktor.html

Wera - 8790 C Wheel Impaktor
05004591001 - 4013288210746

Wera Werkzeuge GmbH
Korzter Straße 21-25
D-42349 Wuppertal
Tel: +49 (0)2 02 / 40 45-0
E-Mail: info@wera.de