



FABRICS & FINISHES

## POLYCARBONATE



**100**  
transparent



**130**  
transparent  
orange



**140**  
transparent  
red



**183**  
transparent  
smoked



**340**  
glossy red



**315**  
glossy dove grey



**310**  
glossy white



**380**  
glossy black

## OVERMOULDED TECHNOPOLYMER



**201**  
transparent  
+ linen



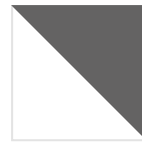
**202**  
transparent  
+ sand



**204**  
transparent  
+ orange

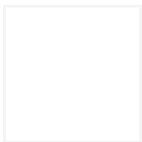


**206**  
transparent  
+ red

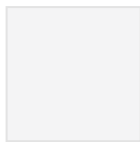


**209**  
transparent  
+ anthracite

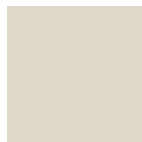
## TECHNOPOLYMER



**10**  
white



**11**  
linen



**15**  
dove grey



**81**  
anthracite



**86**  
graphite



**82**  
light grey



**30**  
orange



**40**  
red



**42**  
geranium red



**20**  
yellow



**22**  
mustard yellow



**51**  
light green



**56**  
olive green



**62**  
light blue



**63**  
air-force blue



**61**  
cornflower blue



**60**  
blu



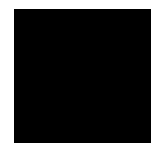
**73**  
terracotta



**72**  
cocoa



**70**  
bronze



**80**  
black



**222**  
white/dove grey



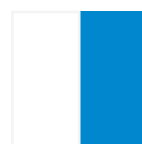
**211**  
white/orange



**212**  
white/red



**221**  
white/light  
green



**213**  
white/  
cornflower blue



**214**  
white/  
anthracite

## STEEL AND STAINLESS STEEL



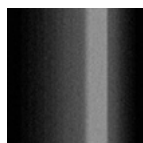
**OS**  
satin brass  
finish steel



**OM**  
matt gold  
finish steel



**BV**  
vintage bronze  
finish steel



**NL**  
glossy black  
nickel finish steel



**NO**  
matt black  
nickel finish steel



**NB**  
matt nickel  
finish steel



**CR**  
chromed  
steel



**IS**  
satin  
stainless steel



**IL**  
polished  
stainless steel



**VB**  
matt white  
coated steel  
smooth finish



**VL**  
matt linen coated  
steel embossed  
finish



**VT**  
matt dove grey  
coated steel,  
embossed finish



**VF**  
matt graphite  
coated steel,  
embossed finish



**VA**  
matt anthracite  
grey coated steel,  
embossed finish



**VN**  
matt black coated  
steel, embossed  
finish



**KE**  
corten effect  
steel



**VY**  
matt mustard  
yellow coated  
steel, embossed  
finish



**VE**  
matt terracotta  
coated steel,  
embossed finish



**VD**  
matt olive green  
coated steel,  
embossed finish



**VO**  
matt air-force  
blue coated steel,  
embossed finish

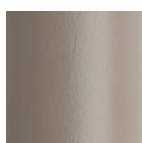
## ALUMINIUM



**AA**  
anodised  
aluminium



**AV 10**  
matt white coated  
aluminium,  
embossed finish



**AV 15**  
matt dove grey  
coated aluminium,  
embossed finish



**AV 70**  
matt bronze  
coated aluminium,  
embossed finish



**AV 81**  
matt anthracite grey  
coated aluminium,  
embossed finish



**AV 84**  
silver coated  
aluminium,  
polished finish

## ZINC COATED STEEL INDOOR/OUTDOOR USE



**ZB**  
zinc and matt  
white coated,  
embossed finish



**ZL**  
zinc and matt linen  
coated, embossed  
finish



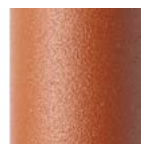
**ZT**  
zinc and matt  
dove grey coated,  
embossed finish



**ZA**  
zinc and matt  
anthracite coated,  
embossed finish



**ZY**  
zinc and matt  
mustard yellow  
coated, embossed  
finish



**ZE**  
zinc and matt  
terracotta coated,  
embossed finish



**ZO**  
zinc and matt  
air-force blue  
coated, embossed  
finish



**ZP**  
zinc and matt  
antique pink coated,  
embossed finish



**ZV**  
zinc and matt olive  
green coated,  
embossed finish



**ZN**  
zinc and matt black  
coated, embossed  
finish

## SUMMER AND LEO FINISHING – ZINC COATED STEEL INDOOR/OUTDOOR USE



**VB**  
zinc and matt  
white coated steel,  
embossed finish



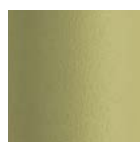
**VT**  
zinc and matt dove  
grey coated steel,  
embossed finish



**VA**  
zinc and matt  
anthracite grey  
coated steel,  
embossed finish



**VM**  
zinc and matt brick  
red coated steel,  
embossed finish



**VV**  
zinc and matt willow  
green coated steel,  
embossed finish



**VZ**  
zinc and matt light  
blue coated steel,  
embossed finish

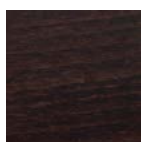
## WOOD



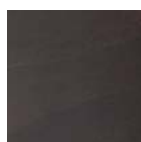
**FN - 500**  
natural beech



**F1 - FS - 501**  
bleached beech



**FW - 502**  
wenge stained  
beech



**FK - 503**  
smoke beech



**FB**  
black stained  
beech



**FG - 504**  
matt grey  
lacquered beech



**FA**  
matt aquamarine  
lacquered beech



**HS**  
bleached ash



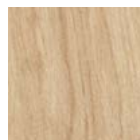
**HW**  
white  
stained ash



**HN**  
blond  
stained ash



**HB**  
black stained ash  
with visible grains



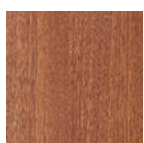
**RN**  
natural oak



**NR**  
black stained  
oak



**NC**  
Canaletto walnut

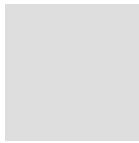


**MS**  
Sapelli  
mahogany

## COMPACT LAMINATE



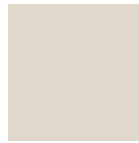
**10**  
white



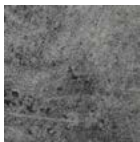
**82**  
light grey



**81**  
anthracite



**15**  
dove grey



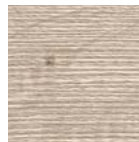
**87**  
concrete effect



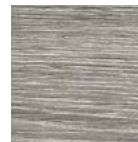
**90**  
stone effect



**91**  
grit effect



**570**  
dove grey oak



**571**  
beaver oak



**572**  
Carrara marble  
effect



**574**  
black marble  
effect



**573**  
corten effect

## GALVANIZED AND POWDER COATED STEEL



**10**  
white



**81**  
anthracite



**56**  
olive green



**63**  
air-force blue



**73**  
terracotta

## TEMPERED GLASS



**412**  
white lacquered



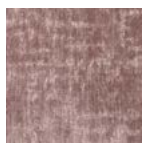
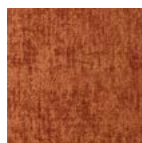
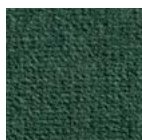
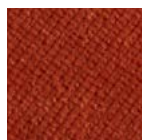
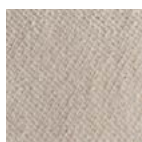
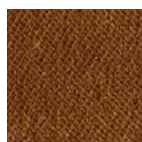
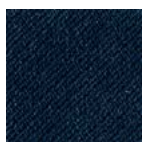
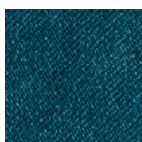
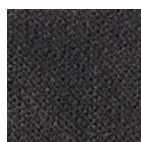
**401**  
smoked grey



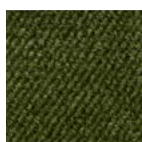
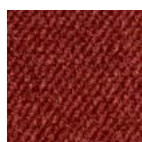
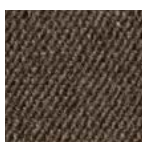
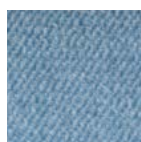
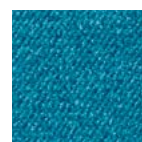
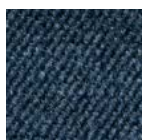
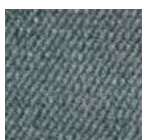
**413**  
screen printed



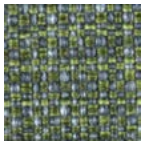
**410**  
wave pattern

**V5X VELVET – STANDARD****WATER REPELLENT****V5 A6****V5 A7****V5 A8****V5 A9****V5 B0****V3X VELVET – STANDARD****FIRE RETARDANT****V3 57****V3 58****V3 59****V3Y VELVET – ALTERNATIVE OPTIONS****V3 60****V3 62****V3 63****V3 64****V3 66**

I 1IM - UNI 9175    Classe 1 - UNI 9177    EN EN 1021:14 Part.1/2    GB BS 5852:06 crib 5    F NF - P 92 503 - M1    D DIN 4102 - B1    California TB 117:2013  
 EN IMO MED - Ftp 307 Part.8

**V4X VELVET – STANDARD****WATER REPELLENT****V4 38****V4 39****V4 40****V4 44****V4 47****V4 50****V4Y VELVET – ALTERNATIVE OPTIONS****V4 45****V4 46****V4 48****V4 49**

**TX FABRIC – STANDARD**



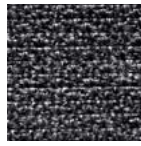
**T5 26**



**T5 27**



**M2 09**  
water repellent



**T3 25**  
fire retardant



Classe 1

USA Calif. Bull. 117 June 2013

GB BS 5852 Crib N.5 using a CM Foam 35 Kg/cu.m.

EN EN 1021 Part. 1-2 using a CM Foam 35 Kg/cu.m. Oeko-Tex Standard 100



**T6 28**  
ignifugo



UNI 9175 (CL 1,IM)  
UNI 8456 (CL 1)  
UNI EN 1021 1-2  
BS5852 1-2

**TY FABRIC – ALTERNATIVE OPTIONS** (for Lady B Pop: recommended fabric)

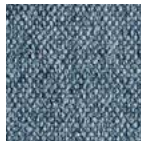
**WATER REPELLENT**



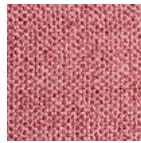
**T9 78**



**T9 79**



**T9 80**



**T9 85**

**EPX SIMIL-LEATHER – STANDARD**

**FIRE RETARDANT**



**EP 70**



**EP 73**



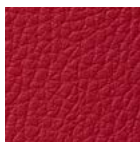
**EP 75**



**EPY SIMIL-LEATHER – ALTERNATIVE OPTIONS**



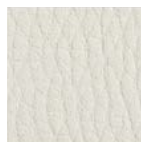
**EP 71**



**EP 72**



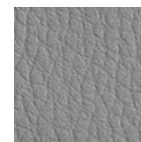
**EP 74**



**EP 67**



**EP 68**



**EP 69**



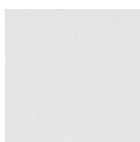
Classe 1. IM (UNI 9175) EN 1021/1 EN 1021/2

**CNY NATURAL LEATHER – ALTERNATIVE OPTIONS**

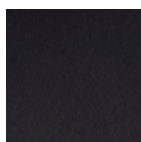
**FIRE RETARDANT**



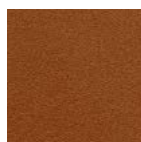
**CN 82**



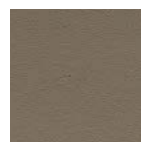
**CN 83**



**CN 84**



**CN A1**



**CN A2**



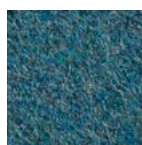
Classe 1. IM

## WFY WOOL – ALTERNATIVE OPTIONS

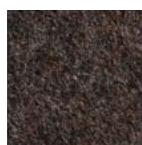
FIRE RETARDANT



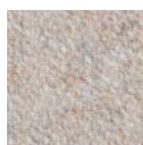
WF 95



WF 96



WF 97



WF 98

■ Classe 1 IM con schiuma standard ignifuga con densità 25 Kg/cu.m. ■ EN 1021 Part. 1-2 using a standard foam 20/22 Kg/cu.m.

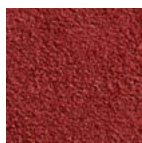
## MX FABRIC – STANDARD

FIRE RETARDANT



M1 05

## MY FABRIC – ALTERNATIVE OPTIONS



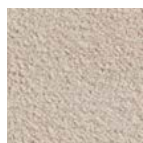
M1 16



M1 17



M1 18



M1 19



M1 20

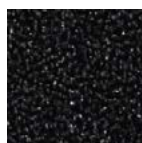
■ Cal. Tech. Bulletin 117, Section E, Part. 1 (CALIFORNIA TEST)

## T4X FABRIC – STANDARD

FIRE RETARDANT

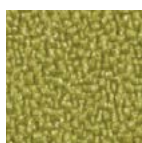


T4 51

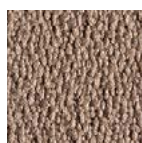


T4 55

## T4Y FABRIC – ALTERNATIVE OPTIONS



T4 53



T4 A3



T4 A4



T4 A5



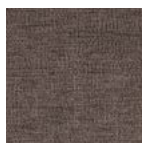
T4 56

■ I Classe 1 ■ D B1 DIN 4102 ■ F M1 ■ GB BS 5852 Crib 5 using a CM Foam 35 Kg/cu.m. ■ A Q1 (OENORM 3800 Part 1) ■ A B1 (OENORM B3825)  
 ■ EN EN 1021 Part. 1-2 using a CM Foam 35 Kg/cu.m. ■ EN EN 13773 Burning Behaviour: class 1 ■ EN EN 13501 - 1esp. 1,2 : B-s1, d0 ■ USA Calif. Bull. 117 June 2013  
 ■ EN EN ISO 6940/6941 ■ CH Fire Protection Classification: 5.3



## AY FABRIC – ALTERNATIVE OPTIONS

STAIN RESISTANT



T8 06



T8 07



T8 08

## WPX ACRYLIC – STANDARD

WATERPROOF



WP 86



WP 87



WP 88



WP 89

## KY FABRIC – ALTERNATIVE OPTIONS

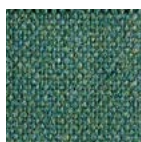
FIRE RETARDANT



K1 90



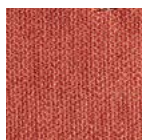
K1 99



K1 00



**I** UNI 9175 Classe 1 IM   **EN** 1021 - 1 (cigarette)   **EN** 1021 - 2 (match)   **GB** BS 7176 Low Hazard  
**GB** BS 5852 Ignition Source 5   **GB** BS 7176 Medium Hazard   **F** NF D 60 - 013  
**A** ÖNORM B 3825 & A 3800-1 (58kg/m3 CMHR Foam)   **GB** BS 5867 - 2:Type B Curtains & Drapes

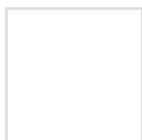


K2 04



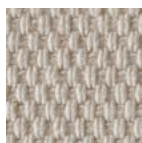
**EN** 1021 - 1 (cigarette)   **EN** 1021 - 2 (match)   **GB** BS 7176 Low Hazard  
**EN** 13501 - 1 Adhered Class B, s1, d0   **EN** 13501 - 1 Un-adhered Class C s1, d0

## TC COM - CUSTOMER OWN MATERIAL



Minimum 20 pcs.  
Fabric to be approved.

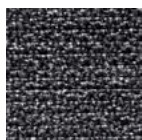
**PANAMA COTTON** for Igloo Chair cushions (Art. 1500) | for Miss B cushions (Art. 1504)



21

**FABRIC** for Igloo Chair cushions (Art. 1500) | for Miss B fixed cushions

**FIRE RETARDANT**



I	Classe 1
USA	Calif. Bull. 117 June 2013
GB	BS 5852 Crib N.5 using a CM Foam 35 Kg/cu.m.
EN	EN 1021 Part. 1-2 using a CM Foam 35 Kg/cu.m. Oeko - Tex Standard 100

25

**FABRIC** for Miss B cushions (Art. 1504) | for Miss B fixed cushions

**FIRE RETARDANT**



I	C1 (UNI 9174 - UNI 8456)
D	B1 (DIN 4102)
F	M1 (NF P 92501-7)
GB	CRIB 5 (BS 5852 part II)
EN	1021/1-2 cigarette 2 match
EN	BS 7176 NH (Medium Hazard)
EN	NF D 60013 (AM18)

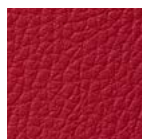
32

**SIMIL-LEATHER** for Miss B fixed cushions

**FIRE RETARDANT**



71



72



73

I	Classe 1, IM UNI 9175
EN	EN 1021/1
EN	EN 1021/2

**FABRIC** for Miss B fixed cushions

**STAIN RESISTANT**



07

**ACRYLIC** for Summer cushions (Art. 1495)

**OUTDOOR USE**  
**WATER REPELLENT**  
**STAIN RESISTANT**



10

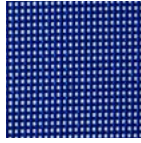
**SYNTHETIC FABRIC, BREATHABLE, WATER-REPELLENT**



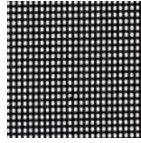
**T10**  
white



**T15**  
dove grey



**T60**  
blue



**T81**  
anthracite

**NAUTICAL ROPE** for Lisa Filò



**N84**  
silver



**N81**  
anthracite



**N80**  
black



**N15**  
dove grey



**N30**  
orange

**WOVEN EXTRUDED PVC** for Lisa Club



**P10**  
white



**P86**  
graphite



**P74**  
biscuit



**P73**  
terracotta



The qualities of responsibility and environmental sustainability in industrial production are a green hope for the future of all of us. Contributing to the process of recycling materials and a production method that respects the environment and keeps it clean is also possible in the production and moulding of technopolymers.

All production is made with 100% recyclable materials as their individual components can quickly be sorted for disposal. Every plastic element has the identification mark according to ISO11469:2001, and provides easy directions for recycling.

All materials used for production are of first quality.

**PLASTICS** – We use techno-polymers with ideal characteristics to manufacture its products, polymeric materials that ensure sturdiness, stability, non-toxicity, resistance to atmospheric agents including mould, dust and smog, and resistance to UV rays. All our techno-polymers are 100% recyclable in full respect for the environment. **For cleaning** use neutral liquid soap diluted in water. Clean with a soft damp cloth to avoid scratches, by all means refrain from using abrasive sponges. Do not use abrasive or chlorine-based products, or solvents in general such as alcohol, benzine, acetone, trichloroethylene, ammonia etc., because these substances tarnish plastic surfaces.

The innovative, exclusive and highly complex moulding technology makes all Wave chairs a very original and exclusive model. This technology is really unique. Any small imperfection that might be present, any colour variation, are typical features of the product, that cannot be avoided and that confirm the product is a unique piece.

**METALS | STEEL** – Only the highest quality steels are used and a strict control on mechanical resistance values is applied throughout the whole manufacturing process.

**METALS | ALUMINIUM** – Aluminium is a metal that combines lightness and great strength, and its surface is anodised or polyester powder coated to ensure superior resistance to corrosion. **For cleaning.** Use only a soft damp cloth to clean steel, aluminium or coated metal surfaces. Do not use abrasive creams or pastes to clean metals and do not use solvents. We recommend that by all means you refrain from using abrasive sponges or steel wool to clean the surfaces.

**WOOD** – All furniture items with wooden shell and/or Frame are manufactured in compliance with European standards, with full respect for the environment. **For cleaning** use only a soft suiting damp cloth and warm water and dry immediately with a soft, dry suiting. Do not use abrasive or aggressive products, chlorine based products and solvents in general. (ammonia, bleach or cleaning products containing acid). Immediately mop up any spilt liquids with a clean dry cloth, wood does not stand the humidity.

Do not expose to direct sunlight. Do not expose to sources of heat.

Wood is a natural material and shall be subject to change color when exposed to sunlight. Wood is a natural raw material; this means that you cannot guarantee the homogeneity and uniformity of synthetic materials. Even elements made from the same plant may show colour differences. Colour variations or imperfections, due to the fibres or veins of wood, are a guarantee of the quality of solid wood and constitute its uniqueness. The colours of our woods are water-based, to respect the environment and health.

**GLASS** – Tempered glass table tops pursuant to UNI EN 12150 standards translucent, screen printed or lacquered. **For cleaning**, use specific cleaning products for windows or a liquid neutral soap diluted in water only. Clean with a soft damp cloth to prevent scratches and dry carefully to maintain shininess. Do not use abrasive or aggressive products.

**FABRICS** – **For instructions** on how to clean fabrics, please refer to the specific data sheet. For everyday cleaning do not brush, but vacuum clean regularly, avoiding applying pressure to the fabric. For light stains, use a soft damp brush, using if necessary mild detergents or white vinegar diluted in a lot of water. **Do not use abrasive products or detergents or solvents. Do not use high pressure steam washers.**

**SIMIL-LEATHER** – **For cleaning.** For everyday cleaning, use a soft, damped cloth. For more stubborn dirt, use a soft sponge with water and soap. Do not use abrasive products or detergents or solvents for cleaning. Immediately mop up any spilt liquids with a clean dry cloth.

**LEATHER** – We use only natural vegetable tanned leather for its upholstered seats. For everyday cleaning, use a soft dry cloth. For more stubborn dirt, use a soft damp cloth. Do not use abrasive products or detergents or solvents for cleaning.

