

MORE UPHOLSTERED IMBOTTITI

Products follows UNI 9175 -UNI 9175/FA, in terms of Fire Resistance, Fire Reation Class 1IM
Prodotto Omologato dal Ministero dell'Interno, secondo la UNI 9175 -UNI 9175/FA, con classe di Reazione al fuoco 1IM

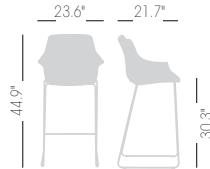


Available coverings / Finiture disponibili
Aurea eco-leather / Ecopelle Aurea **E** (4pcs min.)
King fabric / Tessuto King **K** (4pcs min.)
Kvadrat fabrics / Tessuti Kvadrat **DK** (4pcs min.)
COM fabric / Tessuto cliente **TC** (10pcs min.)

MORE ST 76 UPHOLSTERED



Upholstered techno-polymer seat and chromed or outdoor painted frame.
Sgabello con seduta in tecnopolimero e telaio in metallo cromato o verniciato per esterno.



NA not assembled / non assemblato

1,2 m³ - 30,4 kg.
1x 59x53x91cm

4x 66x55x63cm
4 pcs [carton]

Frame Finishing & Codes / Finiture Telaio e Codici

cod.171.--/IE76ST chromed/cromata
cod.171.--/IE76STB white/bianco
cod.171.--/IE76STN black/nero

cod.171.--/IK76ST chromed/cromata
cod.171.--/IK76STB white/bianco
cod.171.--/IK76STN black/nero

cod.171.--/IDK76ST chromed/cromata
cod.171.--/IDK76STB white/bianco
cod.171.--/IDK76STN black/nero

cod.171/ITC76ST chromed/cromata
cod.171/ITC76STB white/bianco
cod.171/ITC76STN black/nero

Fabric required
Fabbisogno di tessuto
1 pcs: Lin Mtrs 1,3 (h1,40)

COM fabric min. order
10pcs each code
Tessuto cliente TC ordine
min. 10pz per codice

Min. order 4pcs
each code
Ordine min 4pz
per codice

K King Fabric / Tessuto King



6001

6091

6034

6052

7019

7022



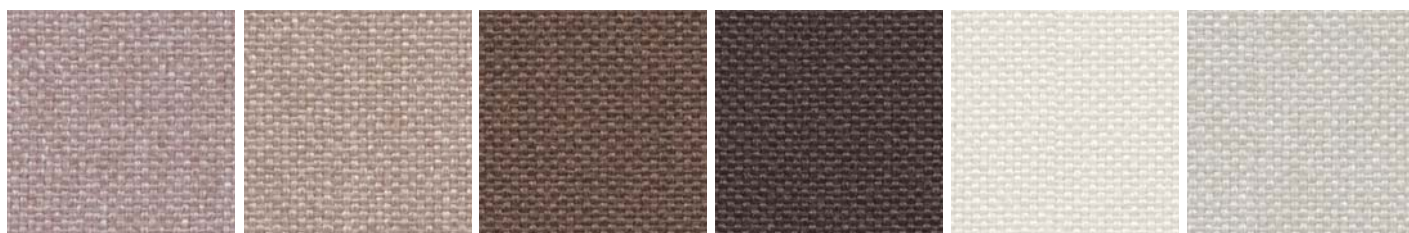
3030

3082

4021

4032

5001



1033

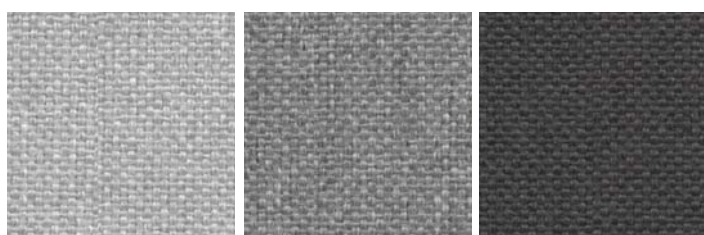
1008

2003

2007

1012

1025



8032

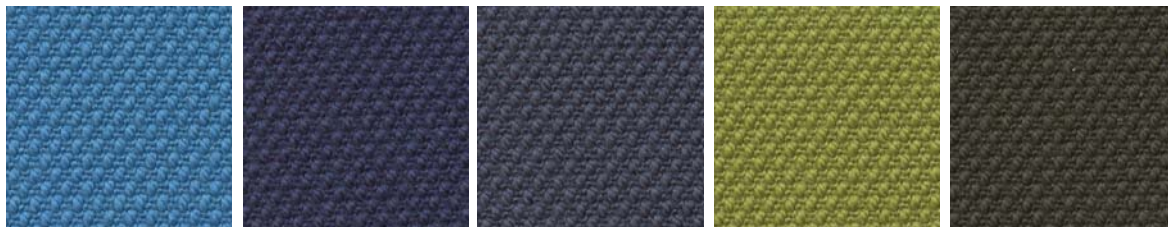
8006

8011

- Composition: 100% POLYESTER - TREVIRA CS
- Abrasion: UNI EN ISO 12947-2 80.000 Cycle Martindale $\pm 10\%$
- Light Resistance-Xenotest: UNI EN ISO 105-B02 / 6 (tol from 5 to 8)
- Fire proof: UNI 9174 - 8456 Class C1, UNI 9175 Class 1, DIN 4102 Class B1, NF 92501-7 Class M1, NF D 60013 Class AM18, EN 1021-1 & 2, BS Crib 5, BS 7176 Class Medium Hazard, EN 13773 Class 1, OENORM 3800-1 Class B1,Q1,TR1, California TB117, USA NFPA 701, USA NFPA 260, IMO A 652 (16) Part 8 Upholstery
- Maintenance: Standard 60° C cotton cycle.

Visit www.fidivi.com for complete colours range / Visionate la completa gamma colori su www.fidivi.com

DK Kvadrat Fabric (Steelcut2) / Tessuto Kvadrat (Steelcut2)



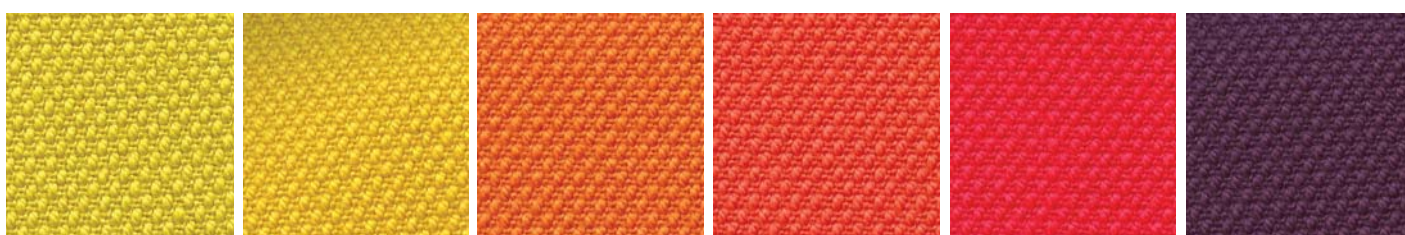
835

760

780

950

975



435

445

535

550

635

625



685

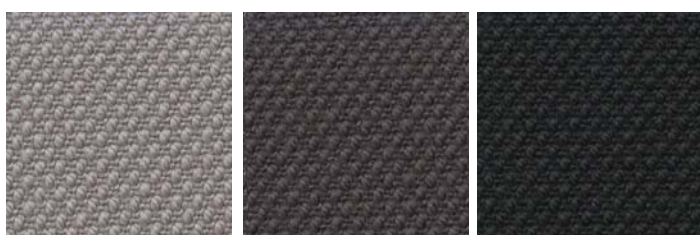
255

365

655

110

140



155

180

190

- Composition: 90% New wool worsted - 10% Nylon
- Abrasion: Approximately 80.000 Martindale rubs, EN ISO 12947
- Lightfastness: Note 5-7, ISO 105-B02
- Fire proof: AS/NZS 3837, class 2, BS 5852 Crib 5 with treatment, BS 5852 part 1, DIN 4102 B2, EN 1021-1/2, IMO FTP Code 2010 Part 8, NF D 60 013, ÖNORM B1/ Q1, UNI 9175 11M, US Cal. Bull. 117-2013, NFPA 260, AS/NZS 1530.3, SN 198 898 5.3 with treatment

Visit www.kvadrat.dk for complete colours range / Visionate la completa gamma colori su www.kvadrat.dk

DK Kvadrat Fabric (Remix3) / Tessuto Kvadrat (Remix3)



733

722

743

753

923

942



672

982

973

612

422

632



653

682

692

233

113

123



143

183

- Composition: 90% wool, 10% nylon
- Abrasion: Approximately 100.000 Martindale rubs, EN ISO 12947
- Lightfastness: Note 5-7, ISO 105-B02
- Fire proof: EN 1021-1/2, BS 5852 part 1, Önorm B1/Q1, NF D 60 013, UNI 9175 1IM, AS/NZS 1530.3, US Cal. Bull. 117-2013, NFPA 260, IMO FTP Code 2010: Part 8, AS/NZS 3837, class 2, BS 5852 Crib 5 with treatment

Visit www.kvadrat.dk for complete colours range / Visionate la completa gamma colori su www.kvadrat.dk

E Simil leather Aurea / Ecopelle Aurea



23

7

14

15

16

8



9

10

17

19

21

11



2

3

5

6



1

22

28

26

- Composition: 72% PVC - 3% PU - 25% COTTON
- Abrasion: EN ISO 5470-2 50.000 Cycle Martindale
- Light Resistance-Xenotest: UNI EN ISO 105-B02 / 6
- Fire proof: IMO resolution A.652 (16): 1989, BS 5852 CRIB 5, BS 5852-1 PART I, EN 1021-2, UNI 9175 CLASSE 1, TB 117 sez. E - p.1 (California)
- Maintenance: Dust gently or pass the surface with a damp cloth.

Visit www.flukso.it for complete colours range / Visionate la completa gamma colori su www.flukso.it